



Compact

range of Weighing Assemblies.



upto
IP68

Features

- 20kg to 2,000kg capacities.
- For platform, hoppers, tanks and Silo weighing.
- Robust hygienic design for harsh industrial applications.
- Inbuilt strength - 150% maximum overload.
- Anit-vibration / anti shock load pad.
- Designed and manufactured in the UK with a 5 year warranty.

Options

- ATEX for Zone 0, 1, 2, 20, 21 and 22 hazardous areas.
- OIML C3 approval.
- Digital version with RS485 ASCII, Modbus, CAN and CANopen outputs.
- High temperature version up to 160°C.
- Range of industrial instrumentation and weight controllers.

Description

The Compact range of Tank and Vessel Weighing assemblies are designed for harsh industrial weighing applications. The assembly ensures precise, reliable and safe operation. ATEX versions are available for use in hazardous areas.

ENGINEERING SPECIFICATIONS

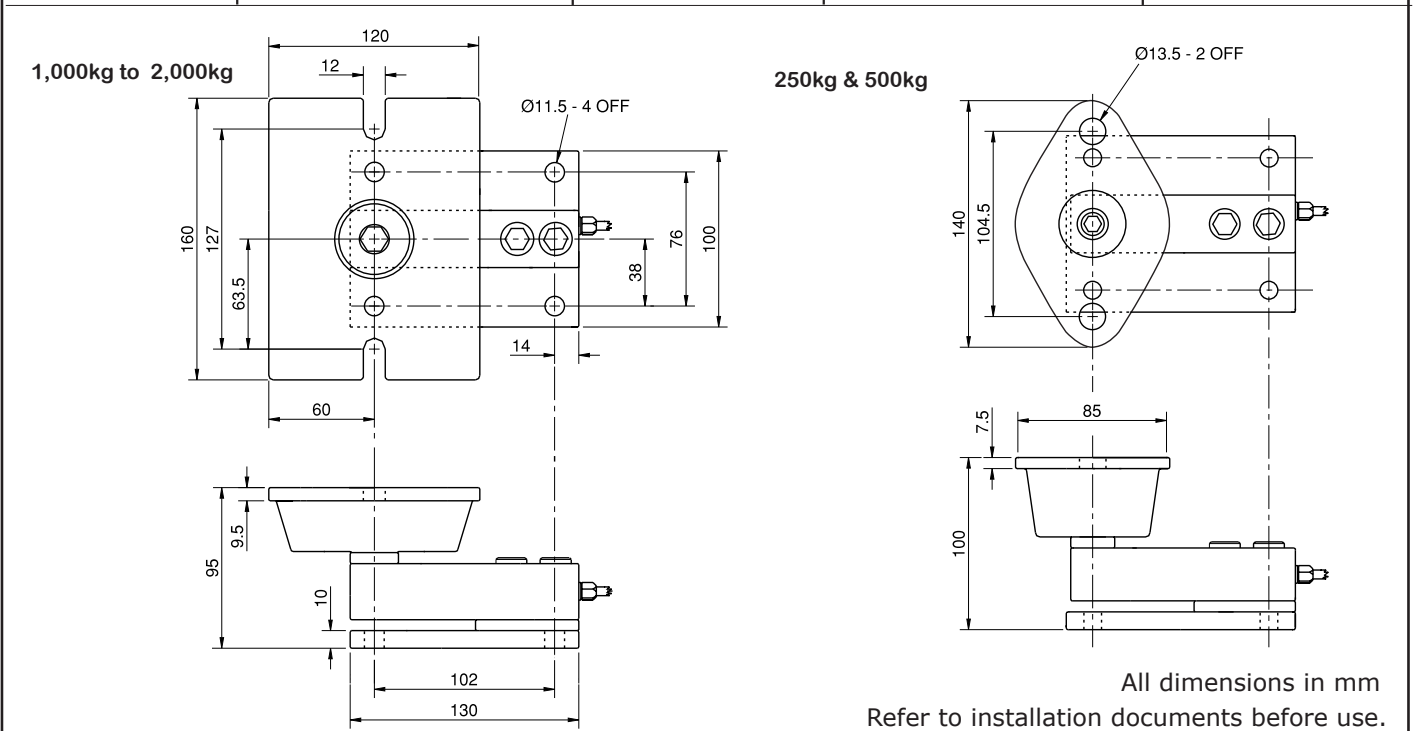
ULTRA COMPACT RANGE - STAINLESS STEEL LOAD CELL WITH STAINLESS STEEL ASSEMBLY

Specifications

Full Scale Output:	2.00mV/V Nominal	For ATEX Category 1 - Ex II 1GD
Creep (in 20 minutes)	0.02% maximum	Ex ia IIC T6 Ga (-35°C ≤ Ta ≤ +60°C)
Non-Linearity:	0.03% maximum	Ex ta IIIC T85°C T ₅₀₀ 107°C Da IP66 (-35°C ≤ Ta ≤ +60°C)
Hysteresis:	0.05% maximum	For ordering suffix the part number with 'X' i.e.
Non-Repeatability:	0.02% max	AW337/0200X (see certificate BAS99ATEX2067)
Compensated temperature range:	-10°C ... +40°C	250kg - 2,500kg assembly only.
Operating temperature range:	-40°C ... +80°C (-35°C...60°C for ATEX)	For ATEX Category 3 - Ex II 3GD
Load cell material:	Stainless steel 17-4 PH	Ex nA IIC T6 Gc (-35°C ≤ Ta ≤ +60°C)
Assembly:	304 stainless steel	Ex tc IIIC T85°C Dc IP66 (-35°C ≤ Ta ≤ +60°C)
Protection:	up to IP68 (ATEX IP66)	For ordering suffix the part number with 'XD' i.e.
Safe Overload:	150%	AW337/0200XD (see certificate Baseefa09ATEX0147X)
Insulation Resistance:	2000 MΩ	250kg - 2,500kg assembly only.
Zero Balance:	1% F.S.	Cable: 6 metres, 4 core screened. Colour code:
Supply Voltage:	5-12 V (DC or AC)	RED +ve excitation BLUE -ve excitation
Max Voltage:	15V	GREEN +ve signal YELLOW -ve signal

250Kg - 2,000Kg

Assembly-Weighing Capacity	Compact stainless steel assembly & Ultra loadcell part Number:	Weighing Capacity	Ultra loadcell only Part Number:	Ultra Compact only to 500kg (no cell) AW335/00250
250 kg	AW337/00250	250 kg	AW420/00250	
500 kg	AW337/00500	500 kg	AW420/00500	
1000 kg	AW337/01000	1,000 kg	AW420/01000	Ultra Compact only to 2,000kg (no cell)
1500 kg	AW337/01500	1,500 kg	AW420/01500	AW335/02000
2000 kg	AW337/02000	2,000 kg	AW420/02000	



In the interest of continued product development, Applied Weighing reserves the right to alter product specifications without prior notice. **APPLIED WEIGHING INTERNATIONAL LIMITED, Caversham, Reading, England RG4 5AF** 'Applied Weighing' 'Clevermount' and the 'AW' logo are registered trademarks of Applied Weighing International Ltd.

ENGINEERING SPECIFICATIONS

SHEAR BEAM COMPACT RANGE - TOOL STEEL LOAD CELL WITH STAINLESS STEEL ASSEMBLY

Specifications

Full Scale Output: 3.00mV/V Nominal

Creep (in 20 minutes) 0.02% maximum

Non-Linearity: 0.03% maximum

Hysteresis: 0.05% maximum

Non-Repeatability: 0.02% max

Compensated temperature range:

-10°C ... +40°C

Operating temperature range:

-40°C ... +80°C (-35°C...60°C for ATEX)

Load cell material: Plated EN24T steel

Assembly: 304 stainless steel

Protection: up to IP66 (ATEX IP66)


Safe Overload: 150%

Insulation Resistance: 2000 MΩ

Zero Balance: 1% F.S.

Supply Voltage: 5-12 V (DC or AC)

Max Voltage: 15V

For ATEX Category 1 -  II 1G (GAS ONLY)

Ex ia IIC T6 Ga (-35°C ≤ Ta ≤ +60°C)

For ordering suffix the part number with 'X' i.e.

AW331/0200X (see certificate BAS99ATEX2067)

250kg - 2,000kg assembly only.

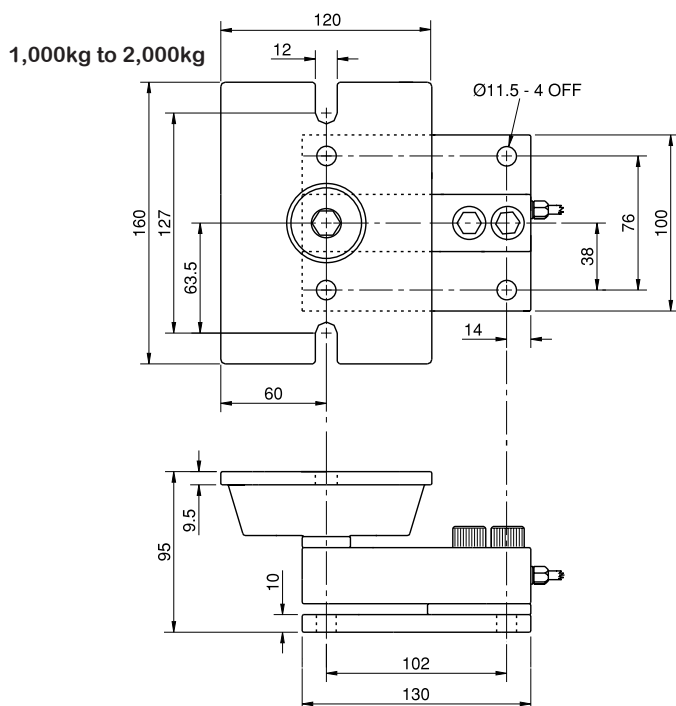
Cable: 6 metres, 4 core screened. Colour code:

RED +ve excitation BLUE -ve excitation

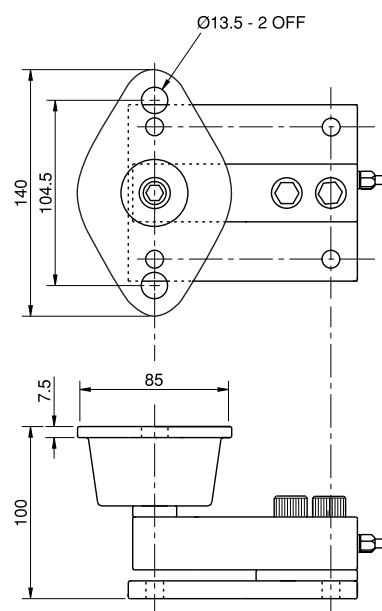
GREEN +ve signal YELLOW -ve signal

500Kg - 2,000Kg

Assembly-Weighing Capacity	Compact stainless steel assembly & shear beam loadcell:	Weighing Capacity	Shear beam loadcell only part Number:	Compact only to 500kg (no cell) AW335/00250
500 kg	AW331/00500	500 kg	AW410/00500	Compact only to 2,000kg (no cell) AW335/02000
1000 kg	AW331/01000	1,000 kg	AW410/01000	
1500 kg	AW331/01500	1,500 kg	AW410/01500	
2000 kg	AW331/02000	2,000 kg	AW410/02000	



500kg



All dimensions in mm
Refer to installation documents before use.

In the interest of continued product development, Applied Weighing reserves the right to alter product specifications without prior notice. **APPLIED WEIGHING INTERNATIONAL LIMITED, Caversham, Reading, England RG4 5AF** 'Applied Weighing' 'Clevermount' and the 'AW' logo are registered trademarks of Applied Weighing International Ltd.


Tel: (0118) 9461900 E-mail: sales@appliedweighing.co.uk www.appliedweighing.co.uk aw.co.uk DS 02909 issue 3

ENGINEERING SPECIFICATIONS

CHALLENGER COMPACT RANGE - STAINLESS STEEL LOAD CELL WITH STAINLESS STEEL ASSEMBLY

Specifications

Full Scale Output: 2.00mV/V Nominal
 Creep (in 20 minutes) 0.02% maximum
 Non-Linearity: 0.03% maximum
 Hysteresis: 0.05% maximum
 Non-Repeatability: 0.02% max
 Compensated temperature range:
 -10°C ... +40°C
 Operating temperature range:
 -40°C ... +80°C (-35°C...60°C for ATEX)
 Load cell material: Stainless steel 17-4 PH
 Assembly: 304 stainless steel
 Protection: up to IP68 (ATEX IP66)
 Safe Overload: 150%
 Insulation Resistance: 2000 MΩ
 Zero Balance: 1% F.S.
 Supply Voltage: 5-12 V (DC or AC)
 Max Voltage: 15V

For ATEX Category 1 -  II 1G (GAS ONLY)
 Ex ia IIC T6 Ga (-35°C ≤ Ta ≤ +60°C)

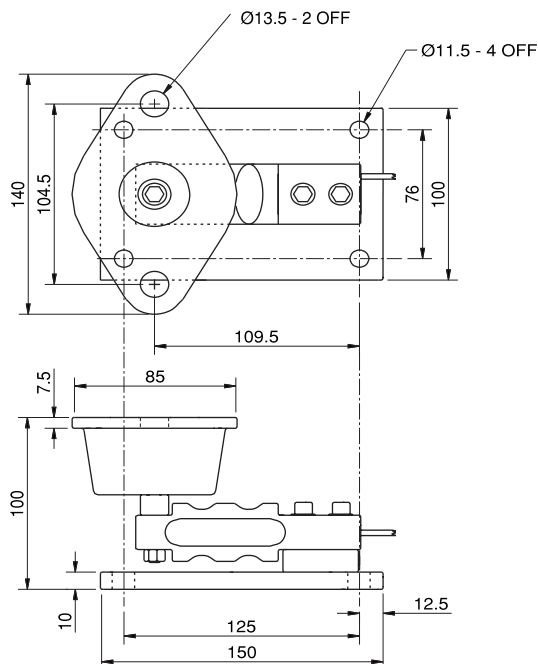
For ordering suffix the part number with 'X' i.e.
 AW336/0002X (see certificate BAS99ATEX2067)
 20kg - 200kg assembly only.

Cable: 6 metres, 4 core screened. Colour code:
 RED +ve excitation BLUE -ve excitation
 GREEN +ve signal YELLOW -ve signal

20Kg - 250Kg

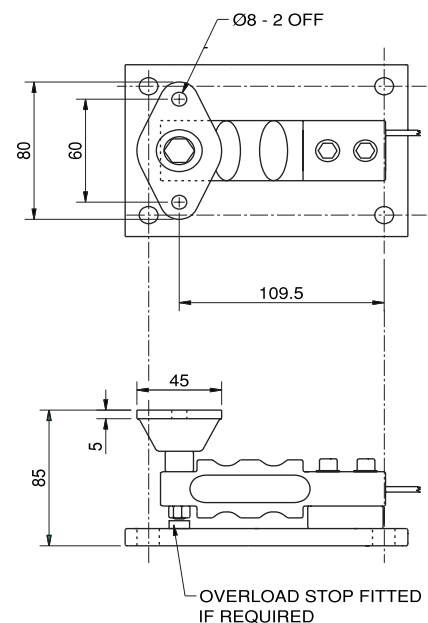
Assembly-Weighing Capacity	Compact assembly & Challenger loadcell part Number:	Weighing Capacity	Challenger loadcell only Part Number:	Compact only to 500kg (no cell) AW334/00250
20 kg	AW336/00020	20 kg	AW430/00020	Compact only to 2,000kg (no cell) AW334/00020
50 kg	AW336/00050	50 kg	AW430/00050	
100 kg	AW336/00100	100 kg	AW430/00100	
150 kg	AW336/00150	150 kg	AW430/00150	
200 kg	AW336/00200	200 kg	AW430/00200	

50kg to 200kg



All dimensions in mm

20kg



Refer to installation documents before use.

In the interest of continued product development, Applied Weighing reserves the right to alter product specifications without prior notice. **APPLIED WEIGHING INTERNATIONAL LIMITED, Caversham, Reading, England RG4 5AF**
 'Applied Weighing' 'Clevermount' and the 'AW' logo are registered trademarks of Applied Weighing International Ltd.

Tel: (0118) 9461900 E-mail: sales@appliedweighing.co.uk www.appliedweighing.co.uk aw.co.uk DS 02909 issue 3

ENGINEERING SPECIFICATIONS

CHALLENGER PRO COMPACT - STAINLESS STEEL LOAD CELL WITH STAINLESS STEEL ASSEMBLY

Specifications

Full Scale Output: 2.00mV/V Nominal
 Creep (in 20 minutes) 0.02% maximum
 Non-Linearity: 0.03% maximum
 Hysteresis: 0.05% maximum
 Non-Repeatability: 0.02% max
 Compensated temperature range:
 -10°C ... +40°C
 Operating temperature range:
 -40°C ... +80°C (-35°C...60°C for ATEX)
 Load cell material: Stainless steel 17-4 PH
 Assembly: 304 stainless steel
 Protection: up to IP68 (ATEX IP66)
 Safe Overload: 150%
 Insulation Resistance: 2000 MΩ
 Zero Balance: 1% F.S.
 Supply Voltage: 5-12 V (DC or AC)
 Max Voltage: 15V

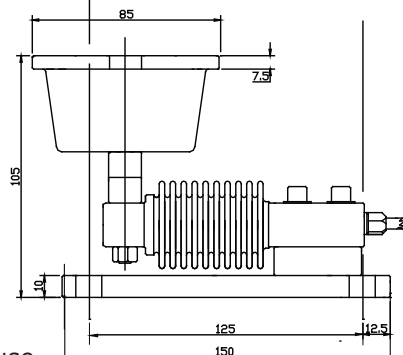
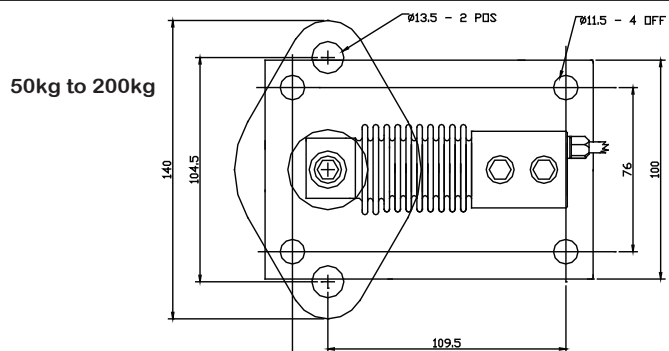
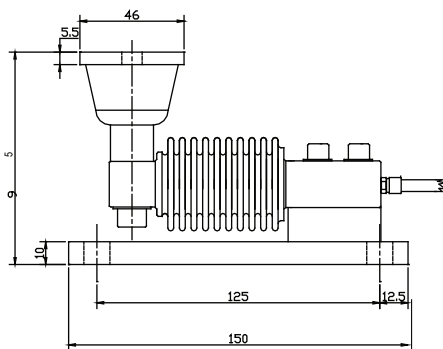
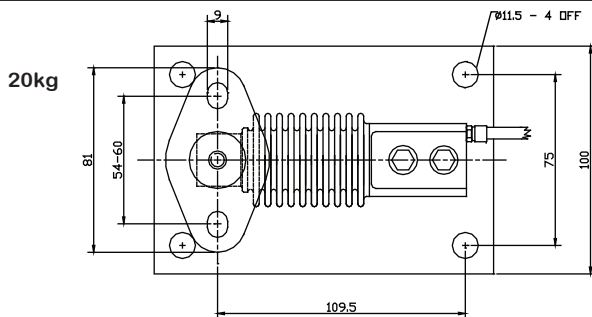
For ATEX Category 1 - Ex II 1GD
 Ex ia IIC T6 Ga (-35°C ≤ Ta ≤ +60°C)
 Ex ta IIIC T85°C T₅₀₀ 115°C Da IP66(-35°C ≤ Ta ≤ 60°C)
 For ordering suffix the part number with 'X' i.e.
 AW339/0020X (see certificate BAS99ATEX2067)
 10kg - 200kg assembly only.

For ATEX Category 3 - Ex II 3GD
 Ex nA IIC T6 Gc (-35°C ≤ Ta ≤ +60°C)
 Ex tc IIIC T90°C Dc (-35°C ≤ Ta ≤ +60°C)
 For ordering suffix the part number with 'XD' i.e.
 AW339/0020XD (see certificate Baseefa09ATEX0147X)
 10kg - 200kg assembly only.

Cable: 6 metres, 4 core screened. Colour code:
 RED +ve excitation BLUE -ve excitation
 GREEN +ve signal YELLOW -ve signal

10Kg - 250Kg

Assembly-Weighing Capacity	Compact assembly & Challenger Pro loadcell part Number:	Weighing Capacity	Challenger Pro loadcell only Part Number:	Compact only to 50kg (no cell) AW335/00250
10 kg	AW339/00010	10 kg	AW435/00010	Compact only to 200kg (no cell) AW334/00250
20 kg	AW339/00020	20 kg	AW435/00020	
50 kg	AW339/00050	50 kg	AW435/00050	
100 kg	AW339/00100	100 kg	AW435/00100	
200 kg	AW339/00200	200 kg	AW435/00200	



All dimensions in mm

Refer to installation documents before use.

In the interest of continued product development, Applied Weighing reserves the right to alter product specifications without prior notice. **APPLIED WEIGHING INTERNATIONAL LIMITED, Caversham, Reading, England RG4 5AF** 'Applied Weighing' 'Clevermount' and the 'AW' logo are registered trademarks of Applied Weighing International Ltd.

Tel: (0118) 9461900 E-mail: sales@appliedweighing.co.uk www.appliedweighing.co.uk aw.co.uk DS 02909 issue 3