



Baby Safemount®

Range of Weighing Assemblies



Features

- Interchangeable capacities from 1,000kg to 7,500kg.
- For industrial weighing of Hoppers, Tanks and Vessels.
- Robust design for harsh industrial applications.
- Inbuilt strength 150% maximum overload.
- Fully welded stainless steel loadcell, with sealing up to IP68.
- Durable coated loading assembly.
- BS EN 1090-2:2018 Execution Class 2.
- Designed and manufactured in the UK with a 5 year warranty.

Options

- 304 Stainless Steel loading assembly.
- ATEX for Zone 0, 1, 2, 20, 21 and 22 hazardous areas.
- Digital Version with RS485 ASCII, Modbus, CAN and CANopen outputs.
- High temperature up to 160°C.
- Range of industrial instrumentation and weight controllers.

Description

The Baby Safemount® range of load cells are designed for harsh industrial applications. Uses include hopper, tank and vessel weighing. The load cell is manufactured from stainless steel, fully welded and sealed to prevent moisture ingress.

ENGINEERING SPECIFICATIONS

BABY SAFEMOUNT® LOAD CELL RANGE

Specifications

Full Scale Output: 2.00 mV/V Nominal
 Creep (in 20 minutes) 0.05% maximum
 Non-Linearity: 0.05% maximum
 Hysteresis: 0.05% maximum
 Non-Repeatability: 0.05% maximum
 Compensated temperature range:
 -10°C to +40°C
 Operating temperature range:
 -40°C to +80°C (-35°C to +60°C for ATEX)
 Load cell material: stainless steel 17-4 PH
 Protection: up to IP68 (ATEX IP66)
 Safe Overload: 150%

For ATEX Category 1 - Ex II 1GD

For ordering suffix the part number with 'X' i.e.
 AW303/0100X (see certificate BAS99ATEX2067)

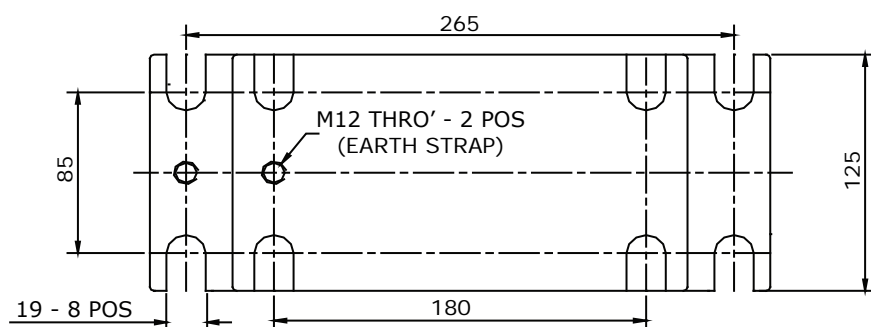
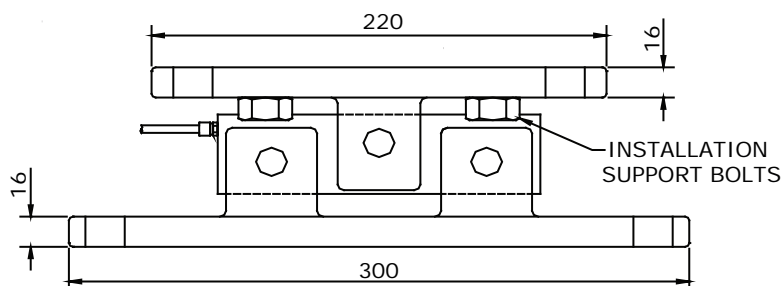
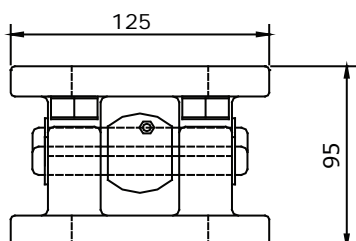
For ATEX Category 3 - Ex II 3GD

For ordering suffix the part number with 'XD' i.e.
 AW303/0100XD (see certificate Baseefa09ATEX0147X)

Insulation Resistance: 2000 MΩ
 Zero Balance: ±1% F. S.
 Supply Voltage: 5-12 V (DC or AC)
 Max Voltage: 15v
 Output Resistance: 700±5Ω

PART NUMBERS 1,000kg - 7,500kg

Capacity	Stainless steel load cell & stainless steel assembly	Stainless steel load cell & mild steel loading assembly	Stainless steel load cell only	Dummy load cell & mild steel loading assembly
1,000 kg	AW305/01000	AW303/01000	AW304/01000	AW302/00011
2,000 kg	AW305/02000	AW303/02000	AW304/02000	
3,500 kg	AW305/03500	AW303/03500	AW304/03500	
5,000 kg	AW305/05000	AW303/05000	AW304/05000	Dummy mild steel load cell only
7,500 kg	AW305/07500	AW303/07500	AW304/07500	AW900/00007



Weight 11kg

Colour Code:

Positive Excitation - RED
 Negative Excitation - BLUE
 Positive Signal - GREEN
 Negative Signal - YELLOW

Cable: 10 metres
 4 core screened

All dimensions in mm
 Refer to installation documents before use

MAXIMUM LOADINGS

Capacity	Maximum Compression Loading	Up-Lift	Maximum Side Force Longitudinal	Maximum Side Force Transverse	Transverse Expansion
Up to 7,500kg	150% of rated capacity	Fit Lift-Off Protection	25 kN	7kN	±4mm

In the interest of continued product development, Applied Weighing reserves the right to alter product specifications without prior notice. **APPLIED WEIGHING INTERNATIONAL LIMITED, Caversham, Reading, England RG45AF**
 'Applied Weighing', 'Safemount' and the 'AW' logo are registered trademarks of Applied Weighing International Ltd.
 Tel: (0118) 9461900 E-mail: sales@appliedweighing.co.uk www.appliedweighing.co.uk aw.co.uk DS 03994 issue 5