

CASE STUDY

BASEMENT WATERPROOFING

Pineapple Dance Studios, London

GRADE 2 LISTED VAULT WATERPROOFING
Newton System 500 used to waterproof this listed vaulted basement in the famous dance studios

Project Details

The extensive basement areas of Pineapple Dance Studios in Langley Street were suffering from extensive damp problems which subsequently rendered the below ground areas unusable.

Newton Specialist Basement Contractor Liqueatek were commissioned to design, install and guarantee the damp proofing of the vaults and bring the area back to a usable space for the tenants.

Methodology

The convoluted vaulted aspects of the vaults under property lent itself to use a "combined" approach to dealing with the damp aspects of the structure. This included using Newton 508 Mesh with Newton NuSeal fixings as well as in some areas a Type A applied cementitious membrane.

The majority of the damp treatment works in the area involved fixing the Newton 508 meshed membrane at 250 centres vertically and horizontally mechanically to the structure to provide a robust background to apply a direct finish to the membrane.

Once the membrane was applied Tarmac Whitewall was applied to the Newton 508 in 2 x 12mm coats allowing for 3-4 days between coats, giving a low profile and "dry" environment.

Benefits

- The low profile nature of the membrane approach meant that in areas where head height is at a premium the application of the membrane system offered an isolation barrier to inherent salts and dampness an only encroached on the space by 30mm.
- The membrane system installed holds BBA certification and the installation by Liqueatek meant the client had the peace of mind of an insured backed warranty.

Result

The Dance Studios have opened up now an extensive new area predominately for storage and maintenance equipment which was previously damp and unusable.

NSBC Contractor: Liqueatek



Pineapple Dance Studios was made infamous by the 2011 TV documentary



Convoluted damp vaults prior to treatment with the Newton System 500



Application of Newton 508 Mesh to the vaulted areas, acting as a barrier against dampness and salts



Finished 2 coats of Tarmac whitewall ready for decoration with breathable finish

Waterproofing A Car Park, Islington

Featured Products

NEWTON SYSTEM 500

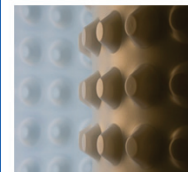
Maintainable Cavity Drain System Comprising Waterproof Membranes, Drainage, and Pumps

The professional's "waterproofing system of choice", Newton System 500 is an internally applied waterproofing system based upon our range of cavity drain membranes, drainage conduits and sophisticated pumping and control systems.

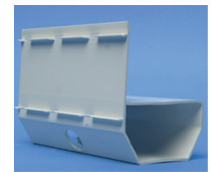
Unlike conventional 'tanking', Newton System 500 is not attempting the almost impossible and trying to hold water back, but places designed maintainable depressurisation voids at known weaknesses in the structure so that ingressing water is simply captured and diverted out of the property.

Newton recommends that our structural waterproofing systems are installed by one of our Nationwide Network of Newton Specialist Basement Contractors who have been trained by Newton and can offer full professional indemnity on design and insured backed guarantee on the installation.

Newton System 500



Waterproof Membranes



Drainage



Pumping System



Water Pumps

Cavity Drain Waterproofing