

CASE STUDY

NEW-BUILD WATERPROOFING

The Florence Institute, Liverpool

CASE STUDIES - NEW-BUILD WATERPROOFING

LISTED BUILDING BASEMENT WATERPROOFING *Newton System 500 used to waterproof this striking Grade II* Listed Building*

Project Details

Constructed in 1889 the "Florrie" as it is know by many locally, was a purpose built boys' Youth Club. The building closed in 1988 and fell into disrepair, the roof was then badly damaged by a major fire in 1999.

A local community pressure group campaigned for the restoration of the Florrie and with granting of Grade II* Listed Building status, a £6.4 million restoration began in 2010. Part of the ambitious restoration plans included for the utilisation of the damp basement for managed workspace units, offices, storage and WCs.

Newton Specialist Basement Contractor Protectahome were commissioned to design and install a guaranteed waterproofing solution.

Methodology

Protectahome designed and installed a Type C Drained Protection Waterproofing System incorporating BBA certificated products from John Newton & Company. The walls were treated using a combination of Newton 508 and Newton 508 Mesh Cavity Drain Membranes.

A fully serviceable Newton Basedrain perimeter drainage channel was installed, discharging to a combination of passive and powered disposal points. Newton 601 flooring membrane was used to seal the floors prior to finishes being applied.

In total the basement waterproofing system incorporates 1,200 square metres of Newton waterproof membranes and 200 linear metres of Newton Basedrain.

Benefits

- Newton System 500 is ideal for listed buildings as the system is deemed 'reversible'
- No messy and costly substrate preparation works
- NSBC Protectahome provided a long term guarantee and design liability, covered by their own PI insurance
- Newton System 500 is a maintainable system so complies with BS8102:2009 regulations

The Florrie was officially reopened in July 2012 by the Bishop of Liverpool James Jones and comedian Jimmy Tarbuck OBE.

NSBC Contractor: Protectahome Ltd



The Florence Institute or 'Florrie' as it is known locally.



BBA approved cavity drain membrane Newton 508 Mesh in situ



Newton 601 Flooring Membrane was used to seal the floors



The Florrie, now fully waterproofed, officially reopened in July 2012

CASE STUDY NEW-BUILD WATERPROOFING

The Florence Institute, Liverpool

The Florence Institute, Liverpool

Featured Products

NEWTON 508 (M1 & M2)

8mm Cavity Drain Membrane for Basement Walls, Floors & Vaulted Soffits

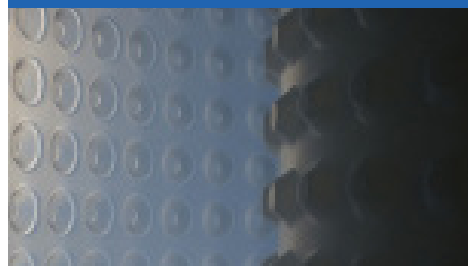
Newton 508 is our high quality BBA approved cavity drain waterproofing membrane suitable for use internally below the ground to retaining walls, vaulted soffits and floors.

Newton 508 is our flagship membrane and one of the most specified cavity drain membranes in the UK. The 0.7mm thick HDPE product allows for large industrial loads to be applied and the in line studs allow for quick installation with minimal surface preparation.

Newton 508 is available in roll sizes 2.4m x 20m - 48m² (M1) and 2m x 20m - 40m² (M2)



Newton System 500 Cavity Drain Waterproofing



Newton 508 Cavity Drain Membrane

NEWTON 508 MESH (M3)

8mm Meshed Cavity Drain Membrane for Basement Walls, Floors & Vaulted Soffits

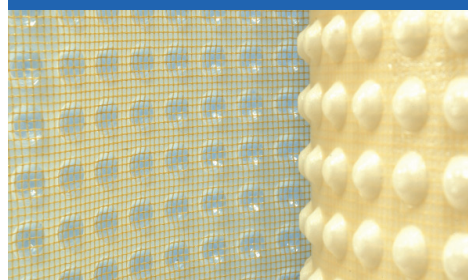
Newton 508 Mesh is a BBA approved meshed cavity drain waterproofing membrane, suitable for use internally below the ground to retaining walls and vaulted soffits.

Newton 508 Mesh is typically used where space prevents the use of a dry-lining frame or block wall as the wall finish or where a direct rendered or plastered finish is preferred. The ability to apply direct finishes to the product makes it ideal for convoluted or confined basement areas where space is at a premium or where the original contours (features) of the property need to be retained.

Newton 508 Mesh (M3) is available in rolls 2m x 20m - 40m²



Newton System 500 Cavity Drain Waterproofing



Newton 508 Mesh Cavity Drain

NEWTON BASEDRAIN (D1)

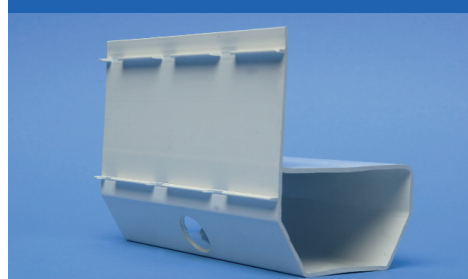
Drainage System

Newton Basedrain comprises a range of products that receive water ingressing at weaknesses within the structure and then discharge the collected water to a Newton Sump System or safe drainage (drainage that is below the level of the basement floor that cannot back-up or block).

Basedrain is supplied in packs of 12 linear metres (6 x 2m) lengths. Internal and external corners, T pieces, drainage connectors and access/jetting ports should be utilised with Basedrain.

Contact us for more details.

Newton System 500 Cavity Drain Waterproofing



Newton Basedrain

CASE STUDY NEW-BUILD WATERPROOFING

The Florence Institute, Liverpool

JN

NEWTON
WATERPROOFING SYSTEMS

Protecting buildings since 1848

The Florence Institute, Liverpool Featured Products

NEWTON 601 SLIMLINE (M6)

Flat Loose Laid High Grade Flooring Membrane

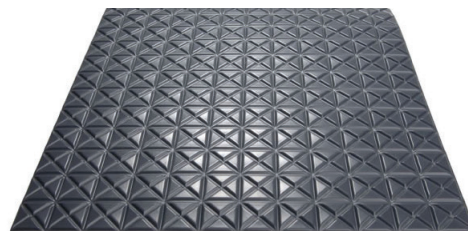
Newton 601 Slimline is a high-grade flooring membrane used primarily for isolating moisture sensitive flooring from dampness in the floor slab, but can also be used as the floor membrane as part of Newton System 500 when the survey has ascertained that no risk of water entering through the body of the slab exists.

Newton 601 Slimline allows for the installation of sensitive flooring to be laid above 'green' still curing concrete as soon as the concrete is walkable, usually two days, significantly reducing project times. With a loading capability of over 1000kN/m², Newton 601 Slimline is able to resist very high compressive loading and is suitable for use as a high load DPC within structural block walls, especially when used to connect the wall and floor membranes within Newton System 500.

Newton 601 Slimline is made from HDPP and is the thinnest profile membrane within the Newton floor membrane portfolio.

Newton 601 is available in rolls 2.07m x 20m - 40m² (M6)

Newton System 600
Flooring Membranes



Newton 601 Slimline