

NEW-BUILD BASEMENT WATERPROOFING

Newton System 500 used to waterproof to Environmental Grade for domestic accommodation

Project Details

Constructed using Insulating Concrete Formwork (ICF), these two new architect designed luxury family homes included habitable basement accommodation. The houses are situated in one of Poole's most prestigious locations on a road, named in research by Lloyds TSB, as "the most expensive street outside of London".

The principle form of waterproofing, installed during the construction phase, had proved unsuccessful and the basement suffered from significant ground water ingress. A remedial Basement Waterproofing Solution was required that would be capable of delivering the Environmental Grade suitable for domestic accommodation.

Methodology

Newton Specialist Basement Contractor Protectahome were appointed to provide a comprehensive waterproofing solution due to their extensive experience of working with ICF Construction. They designed and installed Newton System 500 - a basement waterproofing solution that satisfied all of the site demands. These included the type of construction, suitability of the Waterproofing System, Ground Water Ingress Risk Assessment, the Form and Feasibility of Repair and the End Use.

Newton System 500 Type C Drained Protection Basement Waterproofing System was ideal for this project. Rather than trying to hold water back, it works by placing designed maintainable depressurisation voids at known weaknesses in the structure so that ingressing water is simply captured and diverted out of the property.

Working closely with the main contractor and to a tight schedule, the site team ensured that Newton System 500 - incorporating Newton Membranes and Newton Basedrain - was installed on time and within budget.

Benefits

- No drying out time with this system so the main contractor could proceed with finishing the works without delay
- NSBC Protectahome provided a long term guarantee and design liability, covered by their own PI insurance
- Newton System 500 is a maintainable system so complies with BS8102:2009 regulations

NSBC Contractor: Protectahome Ltd



The striking architect designed family homes were constructed using Insulating Concrete Formwork



Due to the high level of water ingress, a Ground Water Ingress Risk Assessment was undertaken



Each home is now fully protected against water ingress and is finished to a very high specification

CASE STUDY

BASEMENT WATERPROOFING

New-Build Basements, Sandbanks, Poole, Dorset

JN

NEWTON

WATERPROOFING SYSTEMS

Protecting buildings since 1848

Featured Products

NEWTON SYSTEM 500

Maintainable Cavity Drain System Comprising Waterproof Membranes, Drainage, and Pumps

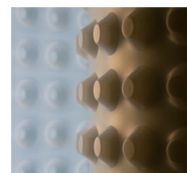
The professional's "waterproofing system of choice", Newton System 500 is an internally applied waterproofing system based upon Newton's extensive range of cavity drain membranes, drainage conduits and sophisticated pumping and control systems. It is a maintainable system, so complies with BS8102 Code of Practice for Protection of Structures Against Water from the Ground.

Newton recommends that our structural waterproofing systems are installed by one of our Nationwide Network of Newton Specialist Basement Contractors (NSBC)

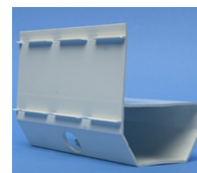
NSBCs have been trained by Newton and can offer full professional indemnity on design and insured backed guarantees on the installation.



Newton System 500



Waterproof Membranes



Drainage



Pumping System



Water Pumps

Cavity Drain Waterproofing