

Rev 2.1 - 04 December 2018

PRODUCT CODE - SX307

## INTRODUCTION

*[Newton 307 PipeSeal](#) is an advanced EPDM pipe collar that provides a physical waterbar for the waterproofing of pipes penetrating through earth retained structures and to prevent water ingress around pipes and gullies to flat roofs and decks.*

*The innovative design of the 70 mm diameter collar has ribs to the outer surfaces that act as barbs, gripping into the surrounding concrete and further internal V-ribs that are complex in shape and which fit closely and tightly, even to uneven pipe surfaces. The wrap-around groove to both ends of the collar provides for error-free installation and tightening of the chrome-steel clamps.*

*The elasticity of 307 PipeSeal permits installation on pipes of plastic, vitrified clay, concrete, cast iron, steel and coated pipes.*



## TOOLS REQUIRED

No special tools are required. Standard contractor tools are sufficient for the correct installation of the pipe collar.

## CONSTRUCTION

The construction should conform with current Building Regulations, British Standards and relevant Codes of Practice.

## PIPE PREPARATION

The surface of the joints should be clean and free from dirt, rust and loose particles. Roughen with a wire brush.

## TYPICAL APPLICATIONS

Waterproofing pipes and gullies protruding through:

- Walls, rafts, slabs and decks to earth retained structures
- Flat roofs, decks, balconies and terraces

## SPECIFICATION

Newton Waterproofing Systems are in partnership with RIBA NBS who publish details of our products and systems within their specification clause library to allow Architects ease of specification through their NBS Plus interface. NBS clauses can be accessed via the technical resources area of the web site where a live NBS Feed is available at [NBS Plus Live Feed](#)

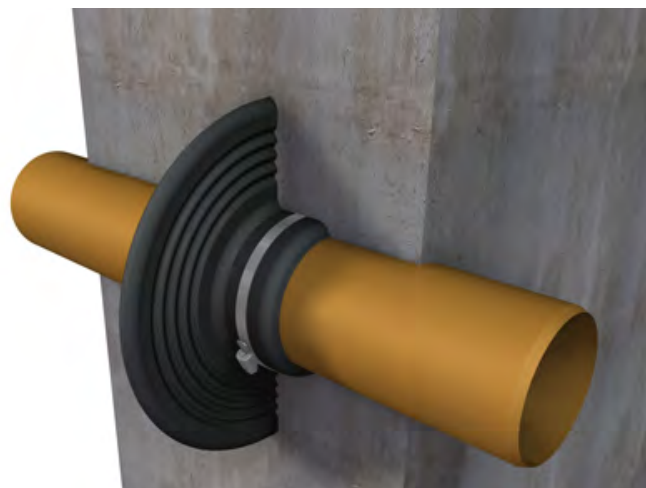
Our website has a wide choice of downloadable [Technical Drawings](#), and a large selection are also available either via [FastrackCAD](#), or as BIM objects on the [National BIM Library](#) and/or [BIMobject.com](#)

## TRAINING & COMPETENCY OF USER

Newton 307 PipeSeal should be used by those with an understanding of the requirement to waterproof retained structures or decks and flat roofs and the knowledge and training to use the product as part of a coordinated approach to the waterproofing of the structure.

## INSTALLATION

- Lubricate the pipe with a neutral soap
- Push the pipe collar onto the pipe to a point that is halfway within the width of the element to be waterproofed
- Tighten the two clamps
- Apply a continuous bead of [Newton 306 SwellMastic](#) to the joint between the collar and the pipe and within one of the V-ribs half way up the flat collar



# NEWTON 307 PIPESEAL

## Pipe Waterbar

### TECHNICAL DATA

Features	Result
Material	Collar - EDPM, Clamp - Chrome steel
Colour	Black
Sizes (Pipe diameter - mm)	110 & 160
Shore hardness (Shore A)	42
Watertightness	1 bar (10m water column)
Installation temperature	5°C to 40°C
Service temperature	-35°C to 100°C

### STORAGE

Store in dry conditions.

### ANCILLARY PRODUCTS

Newton 306 SwellMastic

### HEALTH & SAFETY

Product should only be used as directed. We always recommend that the Material Safety Data Sheet (MSDS) is carefully read prior to application of the material. Our recommendations for protective equipment should be strictly adhered to for your personal protection. The MSDS is available upon request from Newton Waterproofing or online via our website. Please see contact details below.

Newton Waterproofing Systems reserve the right to update product literature at any time. Please always refer to our [website](#) for the latest versions.

© Newton Waterproofing Systems  
(a trading name of John Newton & Co. Ltd.)

Newton House, 17-20 Sovereign Way, Tonbridge, Kent, TN9 1RH

T: +44 (0)1732 360 095 W: [www.newtonwaterproofing.co.uk](http://www.newtonwaterproofing.co.uk) E: [tech@newtonwaterproofing.co.uk](mailto:tech@newtonwaterproofing.co.uk)