



Stunning Mill House Extension, Cornwall

Waterproofing an 18th Century Former Water Mill

The Project

Simon Williams purchased the 18th Century Water Mill in 2015 with a view to renovate, develop and extend the beautiful property, located in Blowinghouse just South of Perranporth, into his private residence.

Once planning permission was gained for the required conversion and extension to transform the mill into a luxurious 5-bedroom family home, Simon liaised with [CAD Architects](#) on the design, which incorporated a waterproofing design specified by Newton.

An additional large garage with charming two-bedroom ancillary accommodation was also added to the grounds of the property, which required specialist steel and concrete foundations, given the close proximity of the water.

The Solution

In order to achieve a Grade 3 habitable environment, British Standard 8102:2009 recommends that a Type C internal cavity drain membrane system is one of the primary forms of waterproofing, as it is the most failsafe system that is least prone to defects and issues.

The [Newton CDM System](#) is also completely maintainable, and was therefore ideal for the 18th Century structure, considering that Williams Creative Homes did not want to compromise the external appearance of the thick stone walls.

The proximity of the river also meant that there was a high risk of water ingress, however Newton's robust cavity drain waterproofing is designed to capture water using [Newton 508](#) membrane on the walls, then drain it away via gravity using [Newton Basedrain](#).

The Result

Finished to an incredibly high standard by [Williams Creative Homes](#), Simon has been living in the property ever since, whilst the Newton waterproofing system successfully ensures that his home is completely dry and protected.



The five-bedroom property is clad in cedar shingles.



All windows are triple glazed with timber frames.



"The Newton waterproofing products provided an extremely straightforward and understandable system for keeping out the water.

Furthermore, it was supplied with all of the required ancillaries and fittings that would be necessary, making it very easy to install, and providing me with total peace of mind that once in place, it would do the job."

Simon Williams, Director
Williams Creative Homes

The Products

CDM SYSTEM

The most reliable waterproofing solution for any habitable space below ground, the Newton CDM System combines our decades of waterproofing experience with the highest quality products.

This includes BBA certified cavity drain membranes from [Newton System 500](#), bespoke sump and pump configurations, backup systems, telemetry and ancillary options, depending on the nature of the project and the client's requirements.

508

One of Newton's BBA certified, high quality cavity drain membranes that can be used to form part of the CDM System

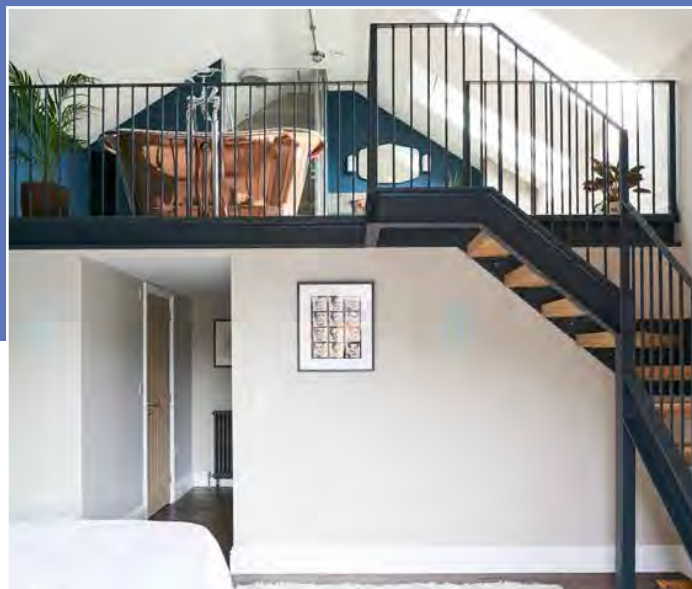
Also the only cavity drain membrane in the UK with BBA approval that is also manufactured from 100% recycled HDPE.

SYSTEM 500 ANCILLARIES

A selection of specialist ancillary products that are critically important for the correct installation of the Newton CDM System, including plugs, tapes and seals.

BASEDRAIN

A range of products that collectively receive and drain water from the cavity drain membranes and direct it to the point of discharge.



Newton CDM System protects the master suite & mezzanine bathroom.



The old stone of the mill is featured in the entrance way.



Industrial style flat-laid blockwork features in the kitchen/dining room.

Newton Specialist Basement Contractors

Newton recommends that our systems are installed by one of our nationwide network of Newton Specialist Basement Contractors (NSBCs). Trained by Newton, NSBCs offer a full guarantee on the design and installation, and can act as Waterproofing Design Specialists.



www.newtonwaterproofing.co.uk



tech@newtonwaterproofing.co.uk



+44 (0)1732 360 095