

Lillie Square Phase 1, London

Waterproofing a Massive New Basement

The Project

Located in Earls Court, Lillie Square is one of the top commercial and residential developments in London, transforming a 7.4 acre carpark into over 800 multi-million pound luxury residences.

The new neighbourhood includes a below-ground luxury residents' clubhouse, including a swimming pool, spa, sauna, steam room, gym and function room. The project therefore required robust waterproofing to protect this internal environment.

The Solution

The long-term partnership between Newton Waterproofing Systems and experienced Specialist Contractor Stonehouse has seen both companies partner on a vast portfolio of properties across the UK, and Stonehouse brought this experience to the table at Lillie Square.

In order to provide the maximum level of protection, and having considered the best options at an early stage, Stonehouse combined two Types of waterproofing in order to achieve a completely dry 'Grade 3' internal environment as per the recommendations of BS 8102:2009.

The first of these products was the Type A, cementitious, liquid-applied waterproofing membrane Newton 107F, which was particularly suitable as it can be quickly spray-applied over large areas. The 107F was supported by the Type C Newton CDM System cavity drain waterproofing, installed throughout the basement area of the clubhouse, with four Titan-Pro sump chambers containing dual NP400 pumps, as well as Newton High Water Alarms, Inverters and Battery Back-up protection creating a truly failsafe system.

The Result

By working with Sir Robert McAlpine at the design stage it was possible to consider the lifetime performance of the structure as well as the cost in order to design and install thorough waterproofing protection.



The development is one of the largest in London.



An expansive CDM installation was required.



"Stonehouse Property Care have worked closely with Newton Waterproofing Systems for almost 20 years, and we wouldn't want to work with any other waterproofing supplier on such a large scale, luxury new build project as Lillie Square. The quality of their waterproofing materials combined with their on-site installation and technical support means I can confidently specify, install and guarantee a fault-free waterproofing solution, and ultimately provide the best result for the client."

Graham Stone, Managing Director, Stonehouse

The Products

107F

Highly flexible and extremely advanced single-component membrane that can handle severe building movement and deformations.

CDM SYSTEM

The professionals' waterproofing system of choice, this internal and fully maintainable system is ideal for new build or refurbished basements, utilising floor and wall membranes, fixing plugs, sealing tapes, drainage channels, insulation boards, and sump and pump chambers.

TITAN-PRO

The unique packaged sump system designed specifically for use with System 500 and compatible with many Newton pumps.

NP400 PUMPS

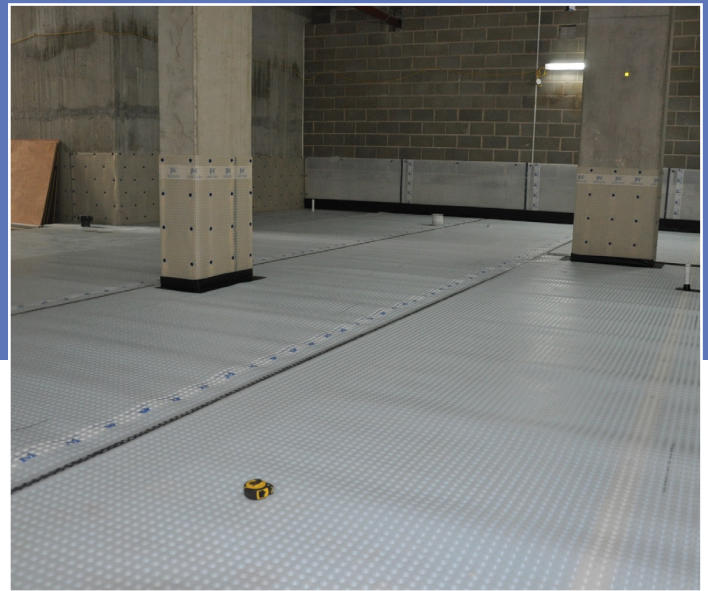
Used with the Titan-Pro White, these high quality clean water pumps are ideally suited for removing groundwater from basements and cellars.

HIGH WATER LEVEL ALARM

Designed to detect high water levels within sump chambers, the battery-powered device is included with Newton Titan-Pro pumping system.

INVERTERS AND BATTERY BACK-UPS

The Victron range of pure sine wave Inverters/Chargers provide advanced solutions to ensure that Newton pumping systems continue pumping during power interruption.



The membrane linked between floor and walls for complete protection.



The resident's club houses a luxury subterranean swimming pool.



Lillie Square is one of the most prestigious developments in London.

Newton Specialist Basement Contractors

Newton recommends that our systems are installed by one of our nationwide network of Newton Specialist Basement Contractors (NSBCs). Trained by Newton, NSBCs offer a full guarantee on the design and installation, and can act as Waterproofing Design Specialists.



www.newtonwaterproofing.co.uk



tech@newtonwaterproofing.co.uk



+44 (0)1732 360 095