



Limehouse Link Tunnel, London

Resin Injection Repair to Large London Tunnel

The Project

The Limehouse Link Tunnel stretches 1.1 miles beneath East London, connecting The Highway to Canary Wharf in London Docklands. The main contractor, RMS (A13) Plc, contacted Newton Specialist Basement Contractor [ASF Waterproofing](#) regarding repairs to the entrance of the tunnel, where there was evidence of water ingress.

The Solution

ASF Waterproofing, who are specialists in injection resins and structural repair work, worked with Newton Waterproofing to provide a suitable waterproofing solution. Following an initial investigation, ASF opted to inject [Newton 320-FP](#) into the structural cracks and concrete joints.

As the water ingress was located near the roof of the tunnel, it needed to close for the repairs to be carried out. This was only possible between 11pm and 4am to minimise disruption to the roads of London.

ASF required a cherry picker and scissor lift to reach the area, so after set up and leaving time to clear the site, ASF were left with approximately a 4 hour window to carry out the works each night.

Newton 320-FP is part of [TRADECC](#)'s high performance specialist injection resin range for water sealing, soil consolidation, structural repair and concrete repair products. Forming a hard, high-strength seal within structural cracks and joints, 320-FP penetrates deep into the substrate in order to stem the flow of unwanted water ingress and return the structure to full working order.

The Result

Considering the challenging time windows presented to ASF, the project was completed in a timely manner, with both the tunnel and the vehicles that use it now protected from unwanted water ingress.



Water was leaking in from near the roof of the tunnel.



ASF needed a cherry picker and scissor lift for the repairs.



"Despite the challenges presented to us with this project, ASF managed to successfully waterproof the Limehouse Link Tunnel using the specialist injection resin, Newton 320-FP. This resin was ideal for this project, due to it's ability to react quickly with water to effectively seal cracks in concrete."

Shaun King, ASF Waterproofing Specialists

The Partnership

TRADECC

Established in the 1990's, [TRADECC](#) excels in construction joint waterproofing, and the manufacture of injection resins for water sealing and soil stabilisation, amongst other chemical products.

From their head office in Antwerp, Belgium, TRADECC partners with expert distributors worldwide, including Newton in the UK:

"Newton's rich history in waterproofing, as well as their commitment and growth strategy make them a knowledgeable and appreciated partner, who we genuinely enjoy working with."

Elise Corens, Export Manager, TRADECC

The Products

320-FP INJECTION RESIN

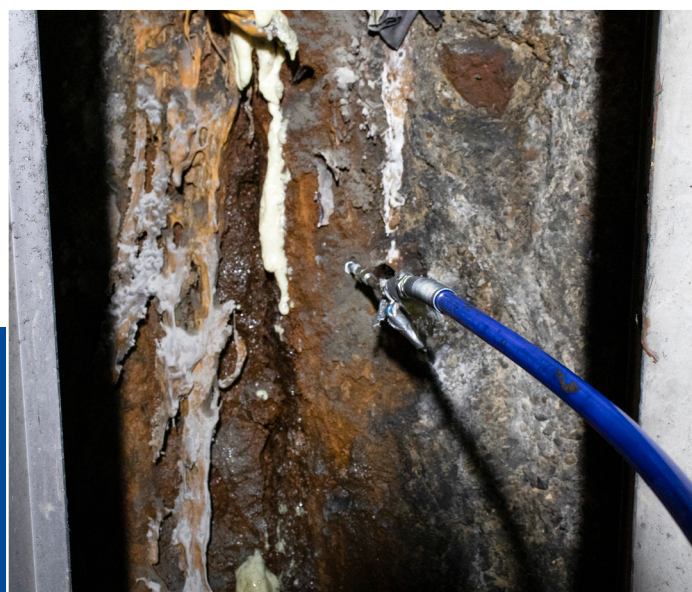
Part of TRADECC's range of specialist injection resins, Newton 320-FP is a foaming polyurethane resin that reacts with water to form a rigid, hydrophobic seal against water ingress. The open-cell, rigid foam is ideal for stemming water ingress at defects in concrete structures and steel piled walls.



The repairs could only be carried out at night.



A Graco machine was used to inject the specialist resin.



Newton 320-FP expands after contact with water to stop leakage.

Newton Specialist Basement Contractors

Newton recommends that our systems are installed by one of our nationwide network of Newton Specialist Basement Contractors (NSBCs). Trained by Newton, NSBCs offer a full guarantee on the design and installation, and can act as Waterproofing Design Specialists.



www.newtonwaterproofing.co.uk



tech@newtonwaterproofing.co.uk



+44 (0)1732 360 095