



Creating a New Community Centre, North West London Transforming a Listed Commercial Basement in Temple Fortune

The Project

When [HSP Architects](#) and [Price & Myers](#) wanted to create a new community centre in Temple Fortune, London, they needed to look no further than Newton Specialist Contractor [Arti Construction](#) to perform the waterproofing.

The basement, part of a four-storey Listed building, was built into a hillside, meaning that three of the walls were either fully or partially below-ground and suffering from water penetration. Arti Construction worked with the design team at an early stage to design a waterproofing solution.

The Solution

With existing, Listed basements such as this one, Arti Construction were quick to recommend a Type C cavity drain waterproofing solution in the form of the [Newton CDM System](#). Type C waterproofing is the safest and most reliable form of waterproofing that will deliver a completely dry internal space, whilst also causing the minimum amount of disruption to the Listed structure.

Before Arti could proceed with the installation, they first had to re-level the existing concrete slab in order to provide a flat and stable floor.

With the structure fully prepared, Arti could then proceed with installing a full cavity drain waterproofing system. This consisted of installing [Newton 508](#) with minimal [MultiPlug](#) fixings to the walls and floors to capture the ingressing water. The water is then directed via [Newton Basedrain](#) channels to a [Titan-Pro](#) sump chamber, for removal by dual [NP400](#) clean water pumps.

The Result

The complex basement space included existing columns, windows and an internal staircase which all had to be factored into the waterproofing design.

Regardless of this, Arti Construction completed the 280m² installation within budget in just one week, delivering a reliable Type C structural waterproofing system that is also compliant with British Standard 8102:2009.



Minimal fixings are perfect for Listed buildings.



The existing basement was over 280m² in size.



"We were extremely pleased to get involved at an early stage as a key member of the design team working alongside HSP Architects and Price & Myers on delivering this important new centre in Temple Fortune.

Our company approach is built around delivering perfection and reliability for our clients, so working with Newton and using their high quality products ensures that we can do this."

Lucian Ardeleanu, Managing Director
Arti Construction Ltd.

The Products

CDM SYSTEM

The most reliable waterproofing solution for any space below ground, the Newton CDM System combines decades of experience with the highest quality, BBA certified membranes from [Newton System 500](#), bespoke sump and pump configurations, back-up systems, telemetry and ancillaries.

508

BBA certified, high quality cavity drain membranes as part of the CDM System, manufactured from 100% recycled HDPE.

MULTIPLUGS & ANCILLARIES

A selection of specialist ancillary products that are critically important for the correct installation of the Newton CDM System, including plugs, tapes and seals.

BASEDRAIN

A range of products that receive and drain water from the cavity drain membranes and direct it to the point of discharge, whether that is a sump chamber or a safe form of natural drainage.

TITAN-PRO

A unique packaged sump system that has been specifically designed to be used within the Newton CDM System. Compatible with numerous Newton pumps, and comes fully built with all necessary internal pipework and pipe fittings.

NP400 PUMPS

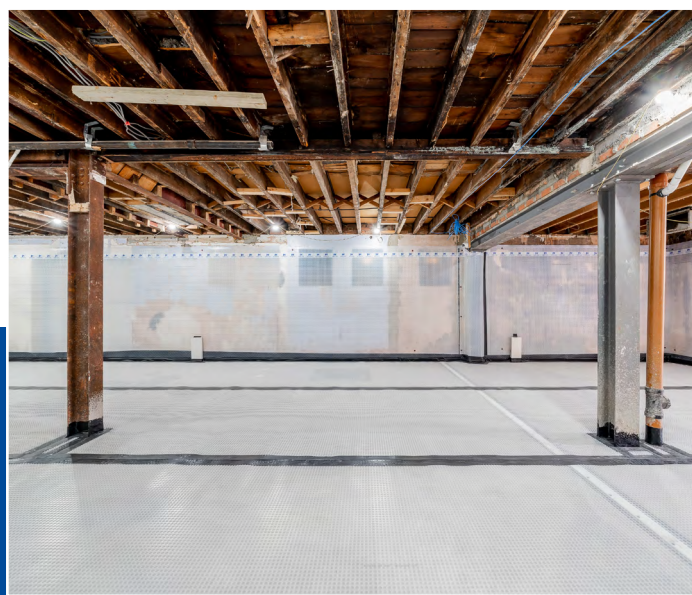
A high head and high to medium performance pump available in both automatic and manual versions. A reliable unit suitable for continual pumping of both rain and ground water.



Inspection Ports ensure that the system is maintainable in future.



All joints between membranes are sealed with Newton Overtape.



Arti Construction delivered an exceptionally neat installation.

Newton Specialist Basement Contractors

Newton recommends that our systems are installed by one of our nationwide network of Newton Specialist Basement Contractors (NSBCs). Trained by Newton, NSBCs offer a full guarantee on the design and installation, and can act as Waterproofing Design Specialists.



www.newtonwaterproofing.co.uk



tech@newtonwaterproofing.co.uk



+44 (0)1732 360 095