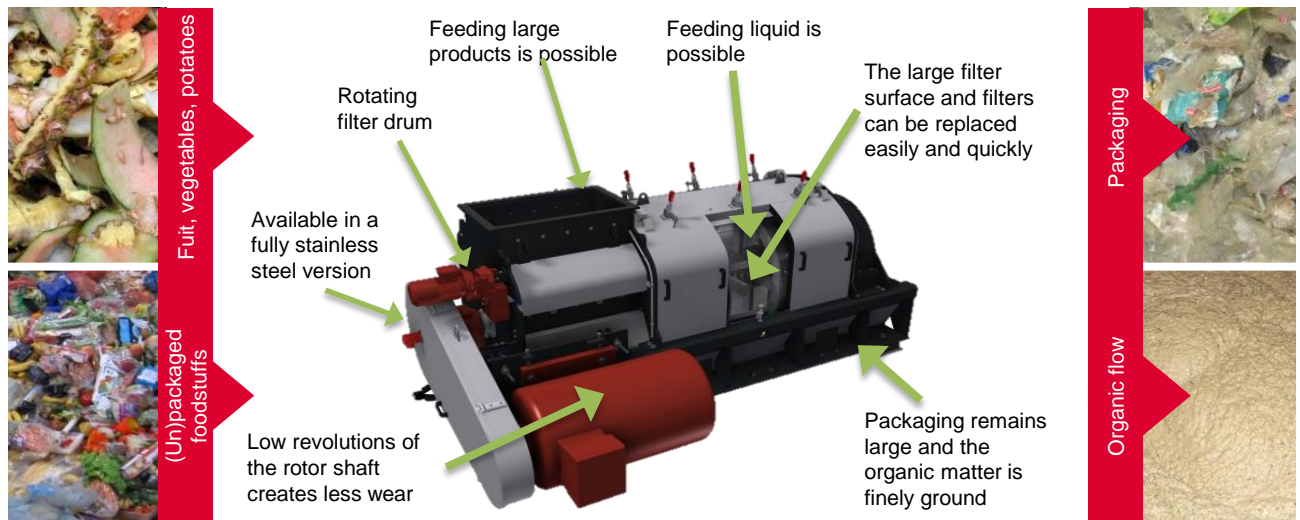




SMIMO160, separator and grinder

The SMIMO160 has been developed for separating large quantities of foodstuffs from its packaging with the organic part being cut/ground.



- Smicon can deliver machines inclusive of control, assembly, turnkey and service plan.

SMIMO160, Technical Data



smicon
ENGINEERING YOUR PROCESS



v2

Dimensions

Machine general (mm)	4430x2430x1540 (lxwxh)
Infeed (mm)	898x504 (lxw)
Outfeed organic (mm)	2993x844 (lxw)
Outfeed packaging (mm)	844x280 (lxw)
Transport dimensions (mm)	4540x2280x1820 (lxwxh)
Transport volume (m ³)	19
Clear zone (mm)	8440x4500 (lxwxh)
Filter surface (m ²)	4,5
Filter mesh size (Ø,mm)	8,12,15,20,25,30,50,70

Weight

Weight (kg)	7100
Floor load (kN)	35 per feet (see □) Dynamic
Transport weight (kg)	7300

Drive

Power shaft (kW)	75/90/110
Power filter drum (kW)	0,75
R.p.m. shaft	500
R.p.m. filter drum	2,5
IP rating	56

Product information

Capacity (m ³ /hour)	0 – 45
Temperature product (°C)	0 – 70

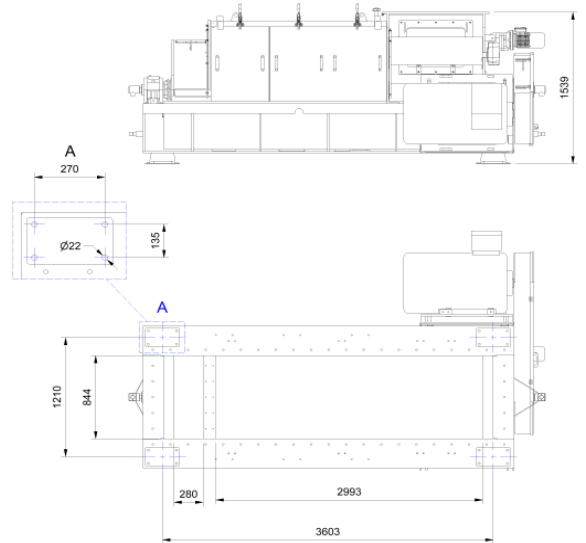
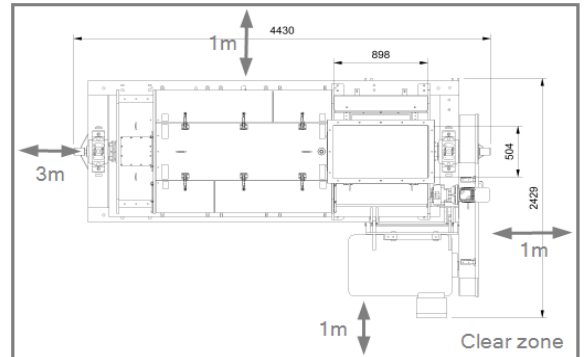
Liquid feed

Connection	1" BSP
Temperature (°C)	max. 70
Pressure (bar)	max. 5
Capacity (m ³ /hour)	18
Fouling (mm)	max. Ø2

Other specifications

A-weighted sound pressure level (dB)	80
C-weighted instantaneous sound pressure (dB)	<130

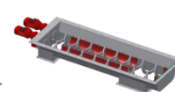
All data are without accessories and specifications depend on used products



Accessories



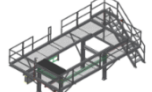
Infeed funnel



Double conveyor screw



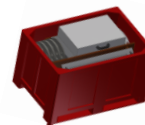
Frame



Platform



Cleaning System



Service box



Crane