



LOVELL
PURBECK
QUARRY MASTERS
AND MASONS

BRITISH PURBECK STONE SPECIALISTS

Isle of Purbeck, Dorset

NATURAL PURBECK STONE FROM THE ISLE OF PURBECK
HAS BEEN USED AS A TRADITIONAL BUILDING AND
PAVING MATERIAL SINCE ROMAN TIMES.

THE LOVELL QUARRIES PRODUCE A WIDE RANGE OF
PURBECK STONE IN A VARIETY OF COLOURS WHICH ARE
SUITABLE FOR A RANGE OF APPLICATIONS INCLUDING
BUILDING, WALLING, FLOORING, PAVING, ROOF TILING,
MONUMENTAL AND HARD LANDSCAPING.



www.lovellpurbeck.com

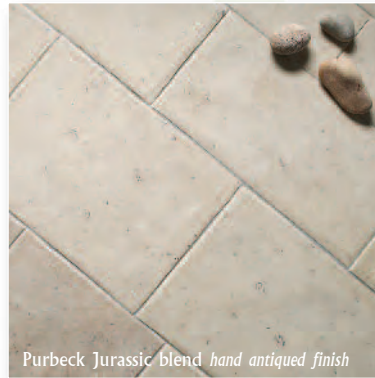
Lovell Purbeck Limited tel 01929 439255 fax 01929 439324 sales@lovellpurbeck.com
Quarry and sales Downs Quarry Kingston Road Langton Matravers Swanage Dorset BH19 3JP
Head office Westway Farm Bishop Sutton Somerset BS39 5XP

Purbeck stone has been used for internal flooring since mediaeval times. The unique aesthetic qualities and unrivalled hard-wearing properties of Purbeck stone make it an ideal choice for a modern day flooring material.

Following the recent installation of a state of the art tile line Lovell Purbeck now offer natural Purbeck stone floor tiles fully calibrated. The Company processes more than 12 individual beds of Purbeck stone; each with unique colours and characteristics.

Purbeck natural stone flooring is available in a range of colours and unique finishes including honed, flamed, brushed and hand-antiqued.

Manufactured in standard gauge widths of 200, 300 and 400mm in random lengths with a standard thickness of 20mm. Other sizes are available to special order.



Purbeck Jurassic blend *hand antiqued finish*



Purbeck Portland Cliffstone *honed finish*



Purbeck Capstone *honed finish*



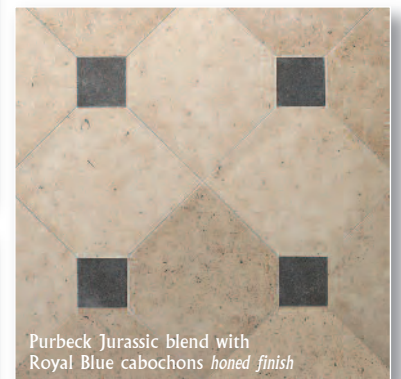
Purbeck Royal Blue *honed finish*



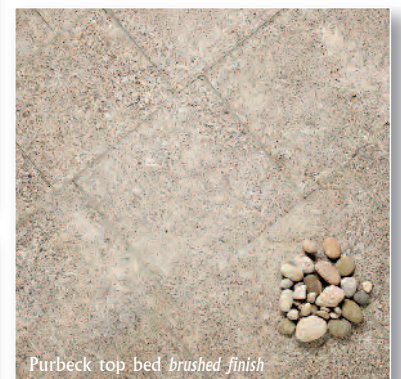
Purbeck Jurassic blend *brushed finish*



Purbeck Royal Blue *flamed finish*



Purbeck Jurassic blend with Royal Blue cabochons *honed finish*



Purbeck top bed *brushed finish*

INTERNAL FLOORING

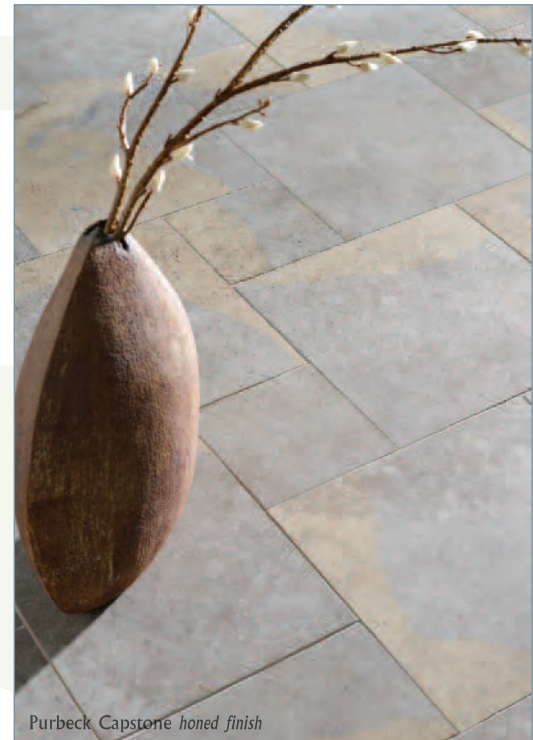
INTERNAL FLOORING

Purbeck natural stone flooring is available in a range of colours and unique finishes including honed, flamed, brushed and hand-antiqued.

Manufactured in standard gauge widths of 200, 300 and 400mm in random lengths with a standard thickness of 20mm. Other sizes are available to special order



Purbeck Jurassic blend with Royal Blue cabochons *honed finish*



Purbeck Capstone *honed finish*



Purbeck Portland Cliffstone *honed finish*



Purbeck Jurassic blend *honed finish*



Purbeck Royal Blue *honed finish*



Purbeck Royal Blue *flamed finish*



CONSERVATION

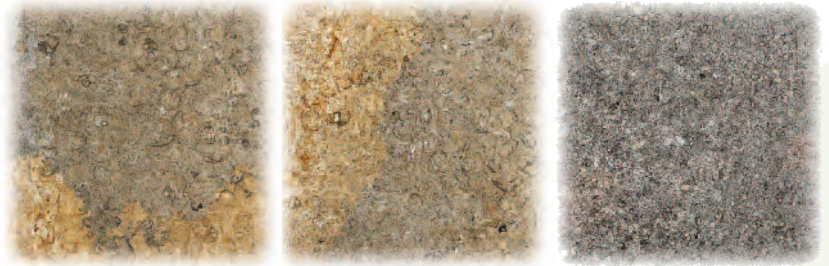
Lovell Purbeck continue to work closely with conservation and ecclesiastical architects throughout England to offer bespoke Purbeck stone products.

Lovell Purbeck employ a team of highly skilled masons who specialise in working with Purbeck stone for conservation and restoration purposes.

ECCLESIASTICAL

Lovell Purbeck specialise in the matching and replacement of natural stone floors within Churches and Cathedrals. The Company also have significant reserves of Purbeck Marble (Viviparus) and Burr Limestone.

Purbeck Marble was widely used for decorative works within Churches and Cathedrals such as Salisbury and Ely, whilst Burr limestone was used to build Corfe Castle. These materials are still required for restoration works but until now they have been difficult to obtain.



Purbeck Marble (Viviparus)



Purbeck Jurassic blend *honed finish*



The Lovell Purbeck works employs a team of skilled masons.





ARCHITECTURAL MASONRY

The Lovell Purbeck masons produce a wide range of architectural masonry including lintels, quoins, jambs, arches, mullions, cills, corbels, steps, thresholds, copings, piers and individual fireplaces.

Some of the beds of Purbeck stone can be polished to give a unique finish; making stunning bathroom surfaces, fireplace hearths and mantles.



ROOF TILES

Lovell Purbeck produce hand-fettled Purbeck stone roof tiles as currently supplied to the National Trust and heritage schemes.

The stone is cut into rectangular components before being flame-textured to give a natural cleaved appearance. The tile blanks are then hand-worked by our masons to give traditional fettled edges.

Available to order in any size with a nominal thickness of 15 to 25mm. Supplied per roofing square (10 x 10ft) or per linear metre.

Please contact the sales office for information regarding independent test data on Purbeck stone flame-textured roof tiles.



flame finishing

The new works enables Lovell Purbeck to produce a wide range of unique Purbeck stone products and surface finishes such as flame-textured.



Colours shown in standard finish



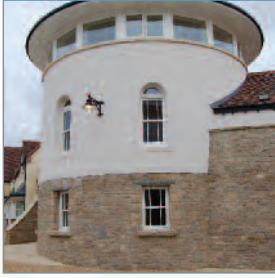
Traditional Purbeck



White-Buff Purbeck



Blue Purbeck



BUILDING STONE

Lovell Purbeck offer building stone in a variety of colours including Traditional, White-Beff and Blue Purbeck. The stone is cropped by state of the art guillotines to create a rustic finish.

Nominal bed widths available: 125 – 150mm (approx 4 sq/m per tonne) and 100 – 125mm (approx 5 sq/m per tonne). Supplied loose or in 1 tonne bags.

Building stone with alternative bed widths or bespoke finishes such as ashlar, pitched, hammer dressed, tooled and fine dressed can also be supplied.

Burr Limestone: Lovell Purbeck has significant reserves of Burr limestone building stone available. Used to build Corfe Castle, Burr Limestone is still required for conservation and restoration projects, but until now has been difficult to obtain.



LANDSCAPING AND ORNAMENTAL

Random walling: Hand split random walling stone is produced from thinner beds of stone with one fair face making it suitable for use as traditional dry stone walling and cock and hen copings. It can also be used for retaining and boundary walls and as a mortar fixed walling stone.

Random walling stone can be supplied loose or in 1 tonne bags (approx 3sq/m per tonne).

Ornamental: The Lovell Purbeck Works produce bespoke hand carved landscaping and garden furniture including tables, seats, benches, bollards and bird baths.

Rockery stone: Feature stones and boulders suitable for use in rockeries and water features are available in a full range of Purbeck colours.



PAVING, SETTS AND STEPS

Purbeck paving is available in standard gauge widths of 200, 300 and 400mm in random lengths and standard thicknesses between 30 and 65mm. Other sizes are available to special order. Setts, Kerbs and ancillaries are also available in any size to special order. Finishes include sawn, bush-hammered, natural riven, flame textured and bespoke tooled. Other finishes are available to special order.



Purbeck Paving *bush hammered finish*



Following significant recent investment Lovell Purbeck now operates a state of the art sawing and processing works.



Lovell Purbeck Limited
tel 01929 439255
fax 01929 439324
sales@lovellpurbeck.com

Quarry and sales
Downs Quarry
Kingston Road
Langton Matravers
Swanage
Dorset BH19 3JP

Head office
Westway Farm
Bishop Sutton
Somerset
BS39 5XP

www.lovellpurbeck.com

Colour and finish variations
Lovell Purbeck products are produced from natural purbeck stone and consequently will show variations in finish and colour.

Physical Properties

For technical data relating to Purbeck stone please contact the sales office.

Design Service

For design guidance please contact the sales office.

Environmental statement

Due to the nature of the quarries and the geology of Purbeck stone, the method of extraction employed by Lovell Purbeck has a very low impact on the environment, utilising efficient machinery and no blasting.

After each quarry (typically only a quarter acre) is worked it is reinstated to either its former environment or improved through the planting of mixed broad-leaf woodland.

The Lovell Purbeck quarries and sawing works are situated adjacent to each other therefore minimising traffic movements.

The works is state of the art and includes a new filter press, enabling continuous recycling of the water used within the sawing process. The masonry shop has been completely refurbished and now includes sophisticated dust extraction equipment.

All off-cuts are reprocessed to keep material wastage to a minimum.



© 2011 Lovell Purbeck Limited

Colour: Reproduction Every care has been taken to reproduce the colour of the Purbeck stone in this document as accurately as possible. However, we cannot reproduce exact colours and recommend that you examine a product sample.

Design and production Tony Baldaro FSCB, Bath. Printed on GF Smith Mohawk Ultrawhite Eggshell paper: FSC - Carbon Neutral - Windpower - Acid free - 100% Elemental chlorine free. Printed in England by Opal Print