



HADDONSTONE

Heads, Cills, Keystones & Window Surrounds





VISIT US

At East Haddon, in the rolling countryside of Northamptonshire in England, Haddonstone has beautiful show gardens and an interior showroom where visitors can see many of the designs illustrated in this catalogue in their proper settings, see opposite. The garden and showroom are open every week from Monday to Friday ~ public holidays and Christmas period excepted ~ between the hours of 9.00 am and 5.00 pm. The gardens are also open on occasional weekends as part of the National Garden Scheme (Yellow Book) to raise money for charity. Brown tourism signs guide visitors to the gardens from the A428.

Haddonstone pieces may also be viewed at stockists across the UK as well as the RHS gardens at Wisley and Harlow Carr. In addition, Haddonstone, TecLite, TecStone and Technistone designs can be seen at Pennine Stone Ltd, Askern Road, Carcroft, Doncaster DN6 8DE. Haddonstone's catalogue can be obtained from the Building Centre, Store Street, London WC1 or viewed online at:

www.haddonstone.com/view-catalogue

In the USA, Haddonstone offices have a permanent showroom display, whilst Haddonstone designs may also be viewed at stores and distributors across North America.

WHY HADDONSTONE?

Haddonstone is a unique form of cast limestone with a surface texture similar to Portland stone. The material matures and weathers like natural stone yet, piece for piece, normally costs significantly less than quarried stone.

The ability to mould the Haddonstone material into almost any shape ~ faithfully reproducing new designs or producing replicas that are virtually indistinguishable from an antique original ~ has won the company numerous contracts ranging from leading international hotels and retail developments to listed National Trust properties and prestige residential projects.

The material used in every design, from the smallest planter to the largest Corinthian column, exceeds the compressive cube strength requirements of the United Kingdom Cast Stone Association and complies with all relevant UK and European standards, whilst TecStone also meets the requirements of all US standards.

Each design is hand made by Haddonstone in the UK or USA using moulds created within the company's extensive mould shops and studios. Using these same facilities Haddonstone can even manufacture non-standard architectural stone pieces to practically any shape, size or colour.

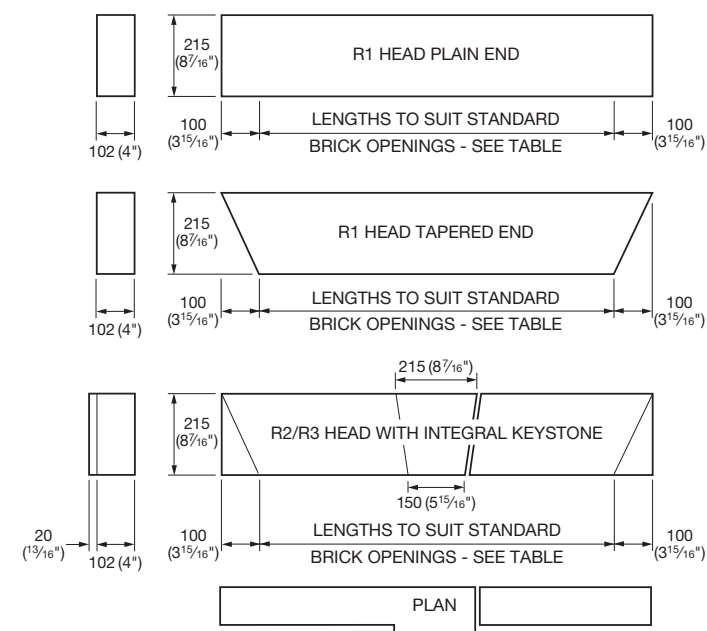
As Haddonstone maintains original models and/or moulds for every single design in the standard collection, and utilises the very latest vapour curing technology, customers can be reassured that the high quality of each stone produced is incredibly consistent whilst retaining the individuality of a hand-made product. The company even offers a five year warranty on cast stone garden ornaments.

Haddonstone can also be an enjoyable investment. At a Sotheby's auction, four Haddonstone Plaited Baskets sold for more than twenty times their current retail value.

Haddonstone ~ one of the few things in life that can grow more beautiful and valuable with the passing of the years.

ARCHITECTURAL STONework

HEADS, CILLS, KEYSTONES & WINDOW SURROUNDS



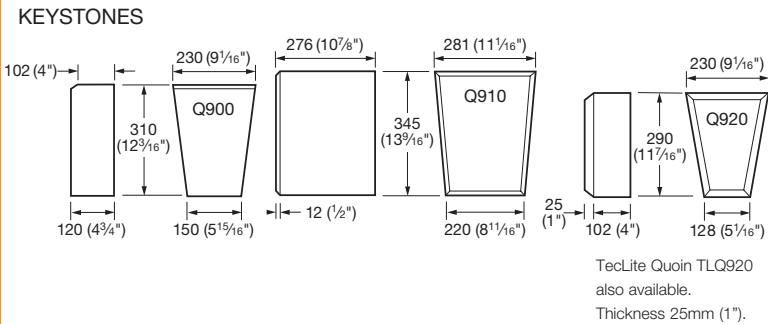
R3 Head with P2 Cill



Q920 Keystone

Keystones

We have three standard designs: Q900A, Q910A and Q920A. Please note that other keystones can be manufactured to individual requirements.



Window Heads

Our standard designs – R1, plain-ended or tapered; R2, plain-ended with integral keystone; and R3, tapered with integral keystone – suit a three-brick course height in a normal cavity-wall situation. They are available to suit the following British Standard brick openings:

R1, R2, R3				
460mm (18 ¹ / ₈ ")	910mm (35 ¹³ / ₁₆ ")	1248mm (49 ¹ / ₈ ")	1585mm (62 ³ / ₈ ")*	
685mm (26 ¹ / ₁₆ ")	1135mm (44 ¹¹ / ₁₆ ")	1360mm (53 ⁹ / ₁₆ ")	1810mm (71 ¹ / ₄ ")*	

*Only supplied as a two-piece head, left-hand end of R2 and R3 incorporating keystone.

Please note that other head sizes can be manufactured to order.

Supporting lintels must be used as these window heads are not structural members.

We strongly recommend that you refer to Eurocode 6 and PD 6697: 2010.

Window Cills

Our three standard designs suit one or two-brick course heights in a normal cavity-wall situation. They are available in the following lengths to suit British Standard brick openings:

P1		P2/P9	
460mm (18 ¹ / ₈ ")	1248mm (49 ¹ / ₈ ")*	460mm (18 ¹ / ₈ ")	1248mm (49 ¹ / ₈ ")
685mm (26 ¹ / ₁₆ ")	1360mm (53 ⁹ / ₁₆ ")*	685mm (26 ¹ / ₁₆ ")	1360mm (53 ⁹ / ₁₆ ")*
910mm (35 ¹³ / ₁₆ ")	1585mm (62 ³ / ₈ ")*	910mm (35 ¹³ / ₁₆ ")	1585mm (62 ³ / ₈ ")*
1135mm (44 ¹¹ / ₁₆ ")**	1810mm (71 ¹ / ₄ ")*	1135mm (44 ¹¹ / ₁₆ ")	1810mm (71 ¹ / ₄ ")*

Note: Dimensions exclude stooling - maximum 100mm (3¹⁵/₁₆") at each end.

*Only supplied as a two-piece cill.

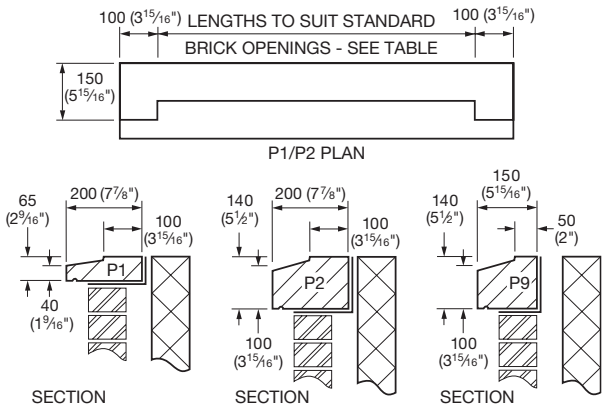
**One-piece only when supplied without stools.

Please note that other cill sizes can be manufactured to order.

We strongly recommend that you refer to Eurocode 6 and PD 6697: 2010, and our Tech Sheet M90/TS for installation recommendations.

TS Tech Sheet No. M90

WINDOW CILLS

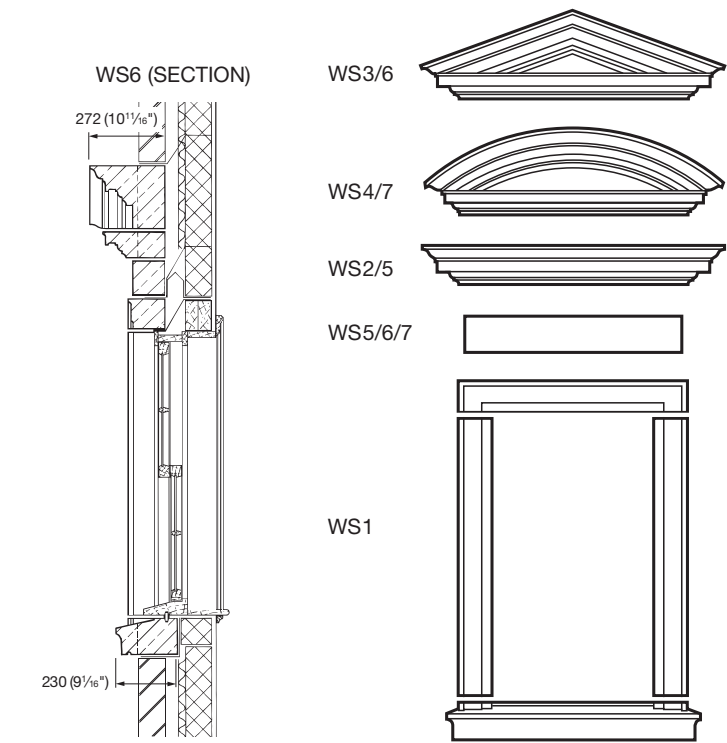


Window Surrounds

Haddonstone has a range of classical window surrounds which can be tailored to suit individual requirements. These surrounds, based on the Tuscan style, can be used for new build or refurbishment.

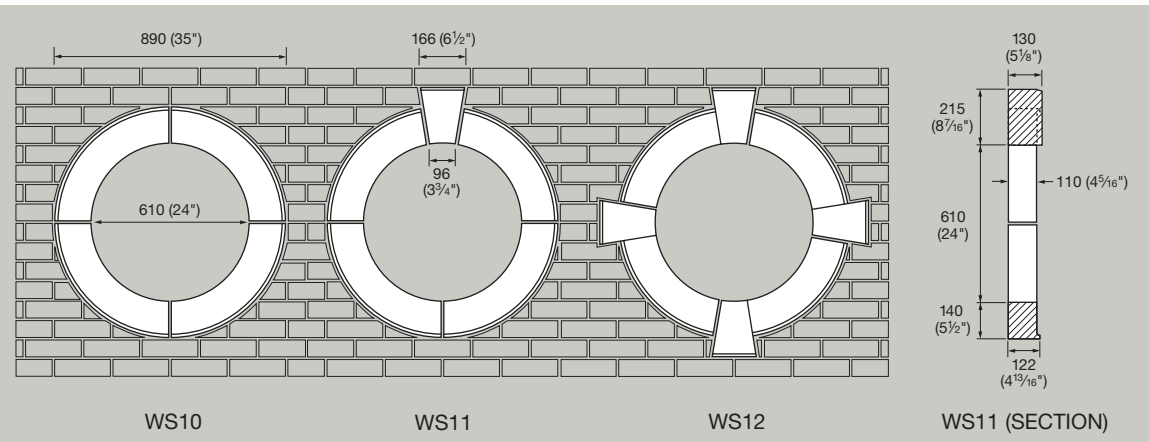
Haddonstone will always continue to create custom-made surrounds, either to an architect's drawing or to match an existing design. Please contact your nearest Technical Department for further information.

We strongly recommend that you refer to Eurocode 6 and PD 6697: 2010.



Bull's-Eye Window Surrounds

Offered in addition to Haddonstone's standard range of surrounds, Bull's-Eye windows are available in three standard styles, as illustrated below:



WS6 Window Surround



WS2 Window Surround





Dedicated to
the memory of
Adrian Coles

Editor: Simon Scott
Artwork: Miranda Eldridge
Principal photographers:
Hugh Palmer & Robin Teall

Copyright © 2012 Haddonstone Ltd. All rights reserved. Except as allowed by law, no part of this publication may be reproduced in any form without the written permission of Haddonstone Ltd.

Please note also that much of Haddonstone's garden ornamentation, architectural stonework and related Tech Sheets and computer programs are subject to registered design, copyright and similar proprietary protections under the laws of various jurisdictions. No pieces contained in this catalogue, or supplied by Haddonstone, should be copied or modified without first consulting the company in writing for permission. Violators of such proprietary rights are subject to severe civil and criminal penalties under law.

The terms "HADDONSTONE", "TECSTONE", "HADDON-TECSTONE", "TECCAST", "TECLITE", "STONEAGE", "TECHNISTONE", "HADDONCRAFT", "ARCADIAN" and "PENNINE STONE" and the stylised forms of these terms are, and in certain instances are registered as, trademarks and service marks of Haddonstone Ltd.



HADDONSTONE

Haddonstone Ltd,
The Forge House, East Haddon, Northampton NN6 8DB, England.
Telephone: 01604 770711 Fax: 01604 770027 info@haddonstone.co.uk

Haddonstone (USA) Ltd,
201 Heller Place, Bellmawr, NJ 08031, USA.
Telephone: 856 931 7011 Fax: 856 931 0040 info@haddonstone.com

Haddonstone (USA) Ltd,
32207 United Avenue, Pueblo, CO 81001, USA.
Telephone: 719 948 4554 Fax: 719 948 4285 stone@haddonstone.com

www.haddonstone.com

