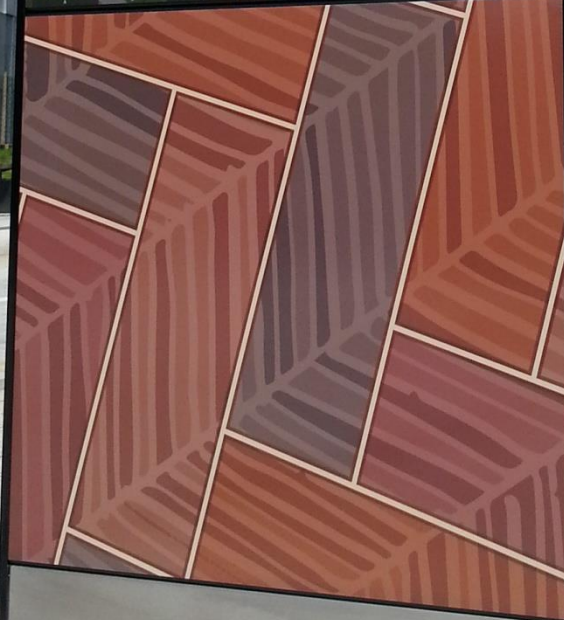


Enigma[®]



Enigma[®]

the
big
heart
of Merthyr Tydfil





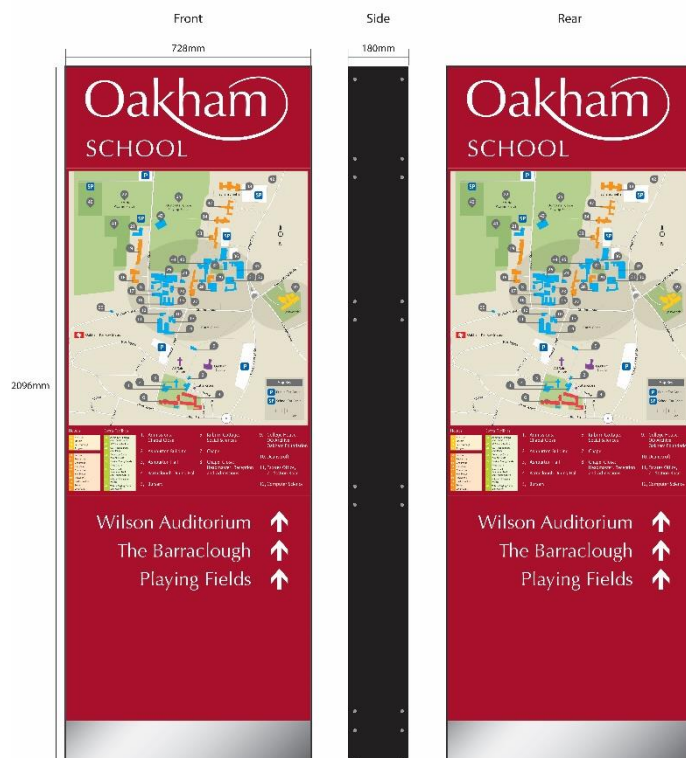
Enigma™ monoliths afford a simple yet effective sign and wayfinding solution. Their modular construction allows graphic panels to be custom designed for each and every location, reflecting the character, landscape and architecture of their immediate surroundings.

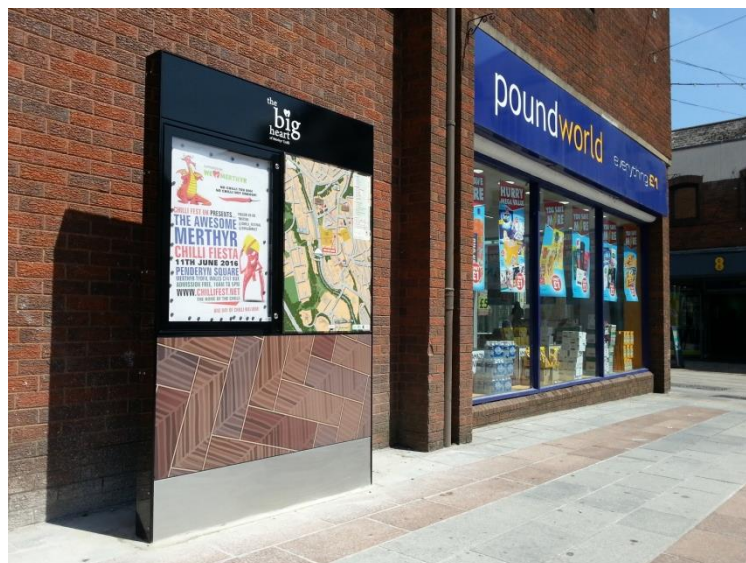
Manufactured from stainless steel with full colour n-viro™ trays, Enigma™ offers excellent value for money, withstanding the rigors of vandalism, street cleaning equipment and the harshest of weather.

Available in three sizes and single or double sided display, Enigma™ can perform many functions, from City centre orientation to heritage interpretation and welcome signs to brand awareness.

- **Stainless steel construction**
- **Powdercoat or brushed stainless steel finish**
- **Full colour printed n-viro™ graphics**
- **Optional notice board function**
- **Stainless steel security fixings throughout**
- **Easy graphic panel replacement**
- **Available in three sizes**
- **Smart device interactivity (optional)**

Enigma Double Sided Monolith (Large)





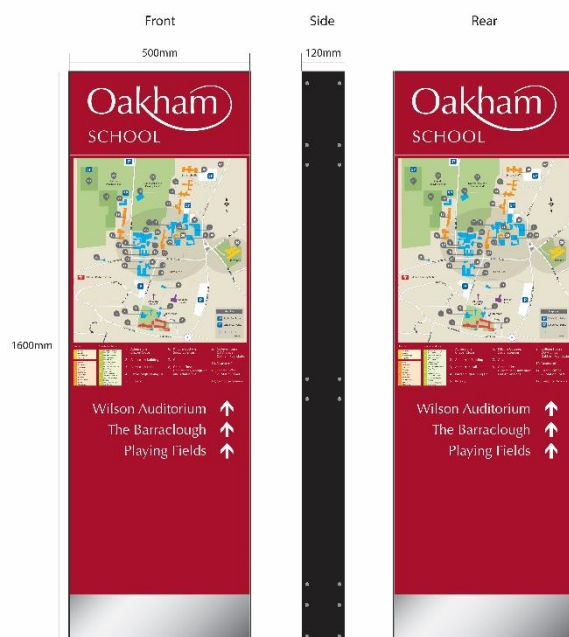
The n-viro™ print process ensures colours are vibrant and logos and images are reproduced without loss of detail. n-viro™ is finished in a heat cured anti-graffiti coating, combating UV degradation and affording the easy removal of graffiti and stickers.

Fitzpatrick Woolmer can help with the full realisation of your project, offering signage and wayfinding strategy development, mapping and interpretation design, and App development for Smart device interactivity.

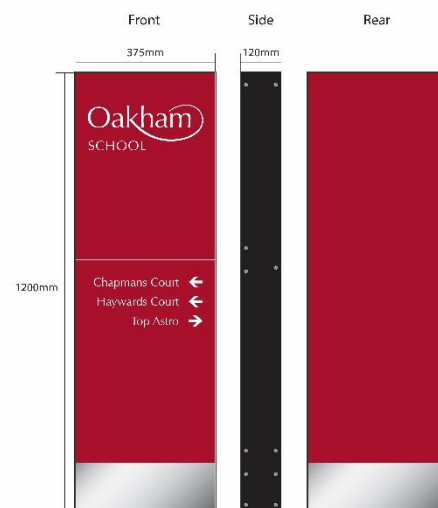
All design, manufacturing and installation is undertaken in-house, ensuring a quality finish to your project.

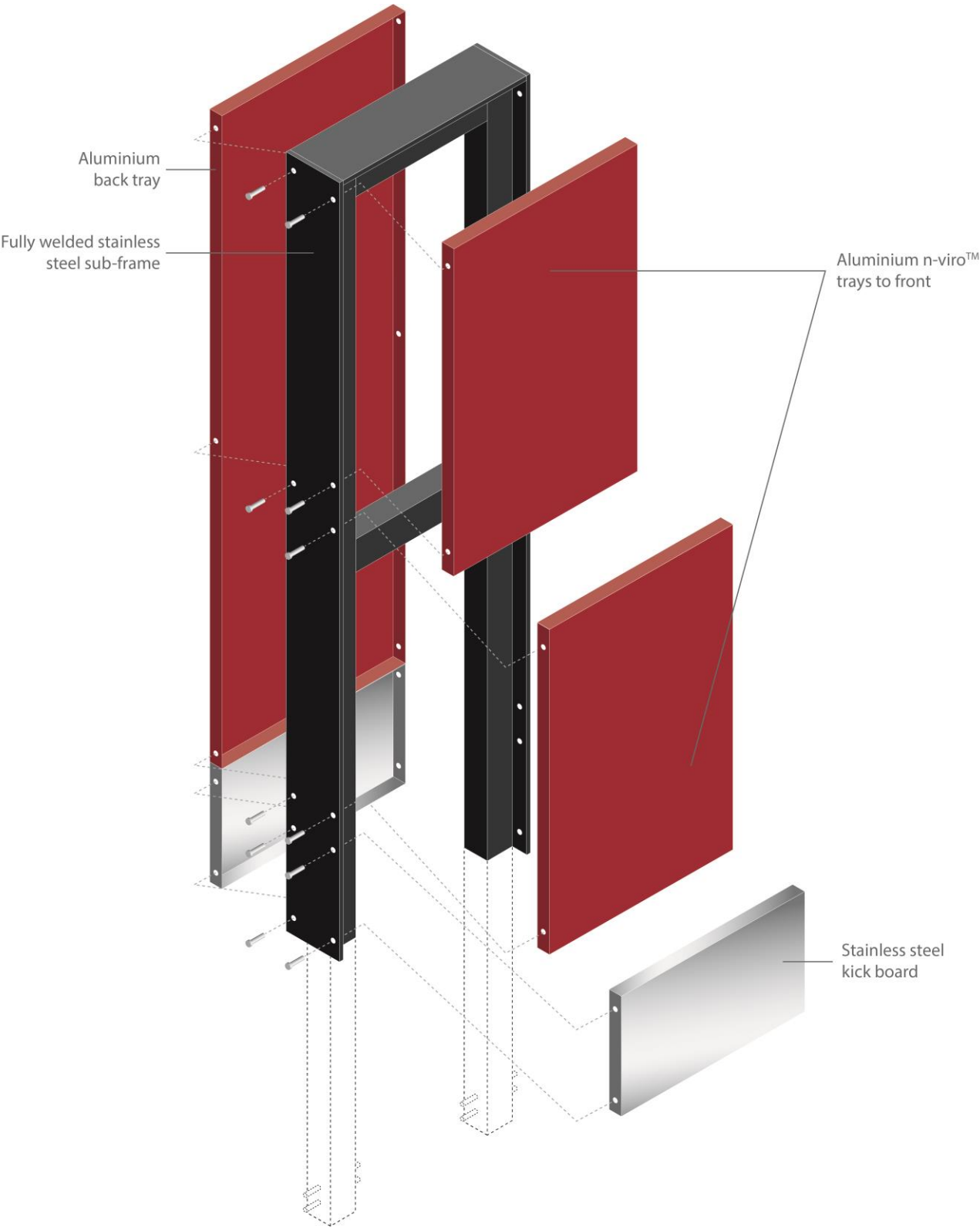


Enigma Double Sided Monolith (Medium)



Enigma Single Sided Monolith (Small)





the
big
heart
of Merthyr Tydfil

SUPPORTED BY
WE ♥ MERTHYR
NO CHILLI TOO BIG!
NO CHILLI NOT ENOUGH!

CHILLI FEST UK PRESENTS...
**THE AWESOME
MERTHYR
CHILLI FIESTA**
11TH JUNE 2016
PENDERYN SQUARE
MERTHYR TYDFIL WALES CF47 8UX
ADMISSION FREE, 10AM TO 5PM
WWW.CHILLIFEST.NET
THE HOME OF THE CHILLI

FOLLOW US ON
TWITTER:
@CHILLI_FESTIVAL
@CHILLIDIRECT

ONE DAY OF CHILLI MAYHEM!



FitzpatrickWoolmer

ENHANCING VISITOR EXPERIENCE

Fitzpatrick Woolmer Design & Publishing Ltd

Unit 7 Lakeside Park,
Neptune Close, Rochester,
Kent, ME2 4LT

t: 01634 711 771 | f: 01634 711 761

e: info@fwdp.co.uk

w: www.fwdp.co.uk | www.fwdpcreative.co.uk