

Play value

The caterpillar is a friendly play offer for small children. The harmonious appearance of the figure and the way in which it is possible to play from both sides offer a lively and pleasant basis for smaller playing spaces. The space partitions promote communicative play, but also make it possible to create borders and divisions of the play areas. Alongside there are many different sand play offers such as sand shovel, sand dump, sieve, turntable, baking table and sand channels.



Fundamental characteristics

- friendly appearance
- sand play area
- peepholes

Suitable

- for small children's areas of:
 - public playgrounds
 - playgrounds near houses
 - kindergartens
 - children's homes
 - therapy institutions for children
 - camp sites
- for nurseries

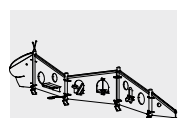
Planning information

The angles of the opposing wall elements and their number can be freely selected to a great extent. Both spread-out as well as more compact floor plans can be constructed. By freely selecting and arranging the individual elements, it is possible to carry out planning according to your requirements. The elements can also be used as partitioning play units without caterpillar head and tail.

Note

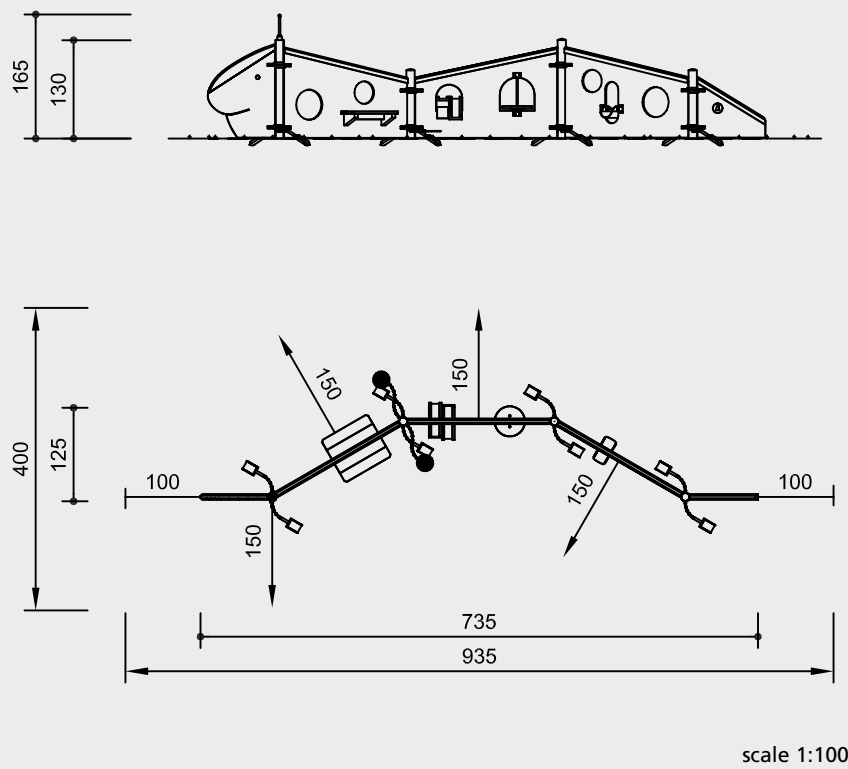
In the standard version, only the head and tail use colour in their design. The elements installed in between are also available with coloured trims (as shown in the photograph) at extra charge.

Caterpillar type 01



5.00010

Example for installation



Safety check according to EN 1176

Components

- 1 head with horns
- 1 element: baking table with 2 sand sieves and 4 shovels
- 1 element: sand see-saw and 2 shovels
- 1 element: turntable, two-way channel and 2 shovels
- 1 tail with a bell
- 4 posts

Installation information

Surfacing requirements corresponding to a fall height of ≤ 0.60 m (please refer to price list for more detailed information)

Foundations

- 4 items 50 x 50 x 40 cm excavation depth 60 cm
- 2 items 30 x 30 x 30 cm excavation depth 50 cm

Attention:

Exact measurements may vary, for all installation dimensions refer to current assembly instructions.

Technical changes reserved.

Technical information

equipment of non-impregnated mountain larch

core-free

sawn timbers core-free, thus decreasing the occurrences of cracking



tongue and groove

baking table made of 40 mm tongue and groove boarding



plywood

wall elements made of waterproof plywood board, 30 mm



Corocord®rope

special ropes of "Hercules type"

horns of six-strand Corocord® rope of the special "Hercules type", abrasion-protected through heating of the six steel strands and melting the polyester or polyamide sleeve onto them, standard colour rainbow



ground anchor

posts for bolt on, head and tail with foundation irons made of hot-dip galvanised steel



chains

short-link chains, 5 mm, welded before hot-dip galvanisation (stainless steel chain available on request)



posts and sand sieves made of stainless steel, glass bead blasted

sand container of textile-reinforced PAH-free rubber belt, 8 mm thick

bell made of brass

colour

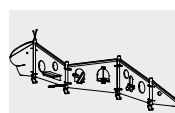
colouring with solvent-free acrylic paints: the wood is processed in a way that allows the structure of the wood to remain clearly visible

Dimensions

(small deviations possible)

height	1.65 m
height of head	1.30 m
length of the element	
head	1.00 m
middle part	2.00 m
tail	1.00 m
weight	350 kg

For more detailed explanation of the quality characteristics see price list.



5.00010