

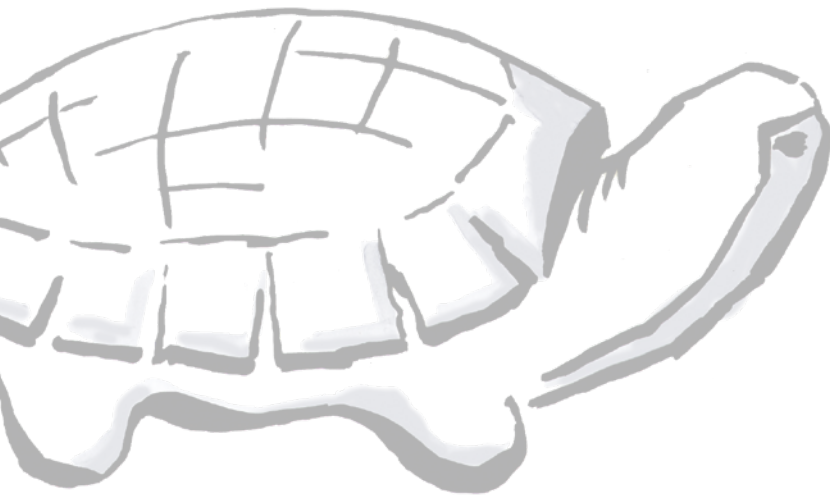


Playground equipment
made of concrete

Richter Spielgeräte GmbH

The **original**, for more than 50 years!





Richter playground equipment made of concrete – ideal for public spaces

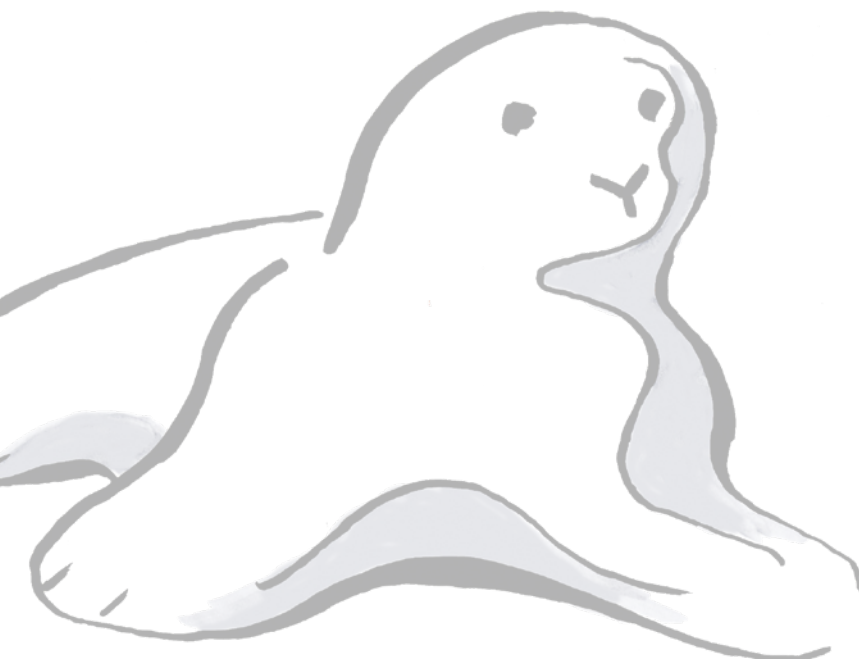
The material concrete

Concrete is a polarising material. It continues to be associated with the endless expanses of dreary prefabricated housing estates and therefore with characteristics such as cold, hard and uncomfortable.

But you can also look at it another way: Concrete is a material that is not only practical but, above all, also has aesthetic qualities. It can come in an almost infinite variety of shapes and colours, while its surface can be ground, polished, impregnated, oiled, waxed, painted or glazed. This makes it possible to create many different kinds of surfaces, from as smooth as glass to rough and raw. The patina the concrete develops over time and through lots of use is a very special feature.

Why make playground equipment out of concrete?

Concrete playground equipment is ideal for outdoor spaces, for example, leisure parks, school playgrounds and other public institutions because of its robust and long-lasting properties. And assembly and inspection of the concrete equipment is very easy compared to other systems. Moreover, concrete not only has a very special aesthetic appeal but, unlike steel and similar to wood, it also has an uneven structure. The grainy surface displays interesting irregularities, which provides children with the opportunity to explore their sense of touch.



Quote by Lissy Boesen (designer of our Stroking Stones):

“Ideas arise while watching the creative play of children on sculptures, upended trees, big stones and similar objects. You can see how they almost instinctively begin to climb. They play “cops and robbers” or make believe the stones are a fortress. However, places such as these can be dangerous to play on as they are often rough, sharp-edged or have protruding pieces. Why not instead offer children concrete sculptures that allow them to develop their powers of imagination and fulfil their desire to climb without any danger of hurting themselves?”



Order No. 4.66060 Dog, charcoal



Order No. 4.69060 Bear, charcoal



Order No 4.71070 Small Resting Cat, concrete grey

Stroking Stones

The gentle nature of these play and art figures and their calm expressions create a peaceful atmosphere, making an encounter with the animals a friendly experience. The stone animals are ideal to stroke, touch and feel; they can be sat upon or incorporated into role-playing games. All sculptures are made from special concrete with ground granite; the surface is painted, but not coloured through.

Fundamental characteristics:

- child-oriented dimensions
- natural colours and high-quality design
- incentive for playing: animals with a friendly appearance
- exercise activity: climbing, sitting, cuddling



Order No. 4.70070 Small Turtle, concrete grey



Order No. 4.63010 Frog, yellow / photo: Mary Noble Ours

Round Reservoirs and Water Basins

The arrangement of these large basins has a strongly aesthetic appeal. They can serve both as “mud tables” and water basins, and are also extremely durable. The run-outs on one or two sides of the dish provide the possibility of combining the dishes to create a water path with a variety of flow options.

A large volume of water can be dammed up in the deep, round reservoirs, which, when released, can be used to power a water wheel, for example.

Fundamental characteristics:

- high-quality design
- incentive for playing: water, round shape
- exercise activity: fine motor activity, accompanying the water flow



Order No. 5.24000ff. Round Water Basin (design: G. Beltzig)



Order No. 5.22000ff. Round Reservoir with Water Basins (design: G. Beltzig)



Order No. 5.22000ff. Round Reservoir / photo: Daniel Perales



Order No. 5.24000ff. Round Water Basins



Order No. 9.02710 Phones made of concrete (design: Dorband/Thiele)

Phones

The Phones are an attractive play item, which allow people to experience the physical phenomena of sound waves and sound wave transmission during play. There are many ways to incorporate this "phone" into role-playing games, and they become particularly interesting when bushes or trees obscure the view to create the illusion of a long distance that needs to be bridged.

Fundamental characteristics:

- elegant design
- enables communication over a long distance



Order No. 9.05000 Parabolic Reflectors (design: G. Beltzig)

Parabolic Reflectors

Sound, like water and air, light or heat, can be concentrated onto one particular spot.

What is spoken at normal volume into the focal point of the reflector can be picked up in a second reflector placed opposite about 30 to 40 m away, as well as at all points between the two reflectors. The Parabolic Reflectors provide the experience of exploring physical phenomena.

Fundamental characteristics:

- incentive for playing: large reflectors
- exercise activity: listening



Throne Ring

Our Throne Ring provides a very special seating experience. With an almost medieval appearance, this circle of chairs with arms is excellent for promoting communication, due to the way the seats are positioned facing and next to one another.

The cool, raw feel of the surface of the concrete differs from normal seating, and its generous size makes the Throne Ring a very special attraction that can be seen from afar. The concrete chairs are not only ideal for resting and chatting, they can also be incorporated into a whole range of exciting role-playing games.

Fundamental characteristics:

- unique and original
- high-quality design
- incentive for playing: seating, round shape
- exercise activity: sitting, resting, role-playing games



Order No. 7.80000 Throne Ring (design: G. Beltzig)



Order No. 7.80000 Throne Ring (construction phase – Brooklyn Bridge Park, USA) / photo: APE



Order No. 7.80100 Steps (design: G. Beltzig)

Steps

For children, playing does not always mean doing something active. Playing can just as well mean simply being there. That's why it is so important to provide seating or spaces just for this – even better if they are situated at a bit of an elevation.

Our Steps are not only inviting to climb, run up and jump down from but, at the same time, they can also be an attractive meeting point in an outdoor area. People can sit here cosily with a good view of their surroundings and chat in a relaxed way. Thanks to the different seating levels, both bigger and smaller children alike can enjoy them. Children love to take a little time out from playing now and again to strike a balance between activity and quiet time. The steps also act as seating in addition to their original function.



Order No. 7.89500 Curve (model, design: G. Beltzig)

Curve

Consisting of a curved concrete wall, the Curve is a very special piece of playground equipment and design element at the same time. Two or more of them can be arranged to create a row, corner or any other shape – creativity is the only limit. You also have the choice between various pieces of supplementary equipment. This allows the Curve to be combined, for example, with a rotating disc, a bench or various other modules.

Fundamental characteristics:

- the space-defining design appeals to the senses
- functional design
- different play offers
- individual elements can be freely combined



Order No. 6.49010 Rope Course Type 01

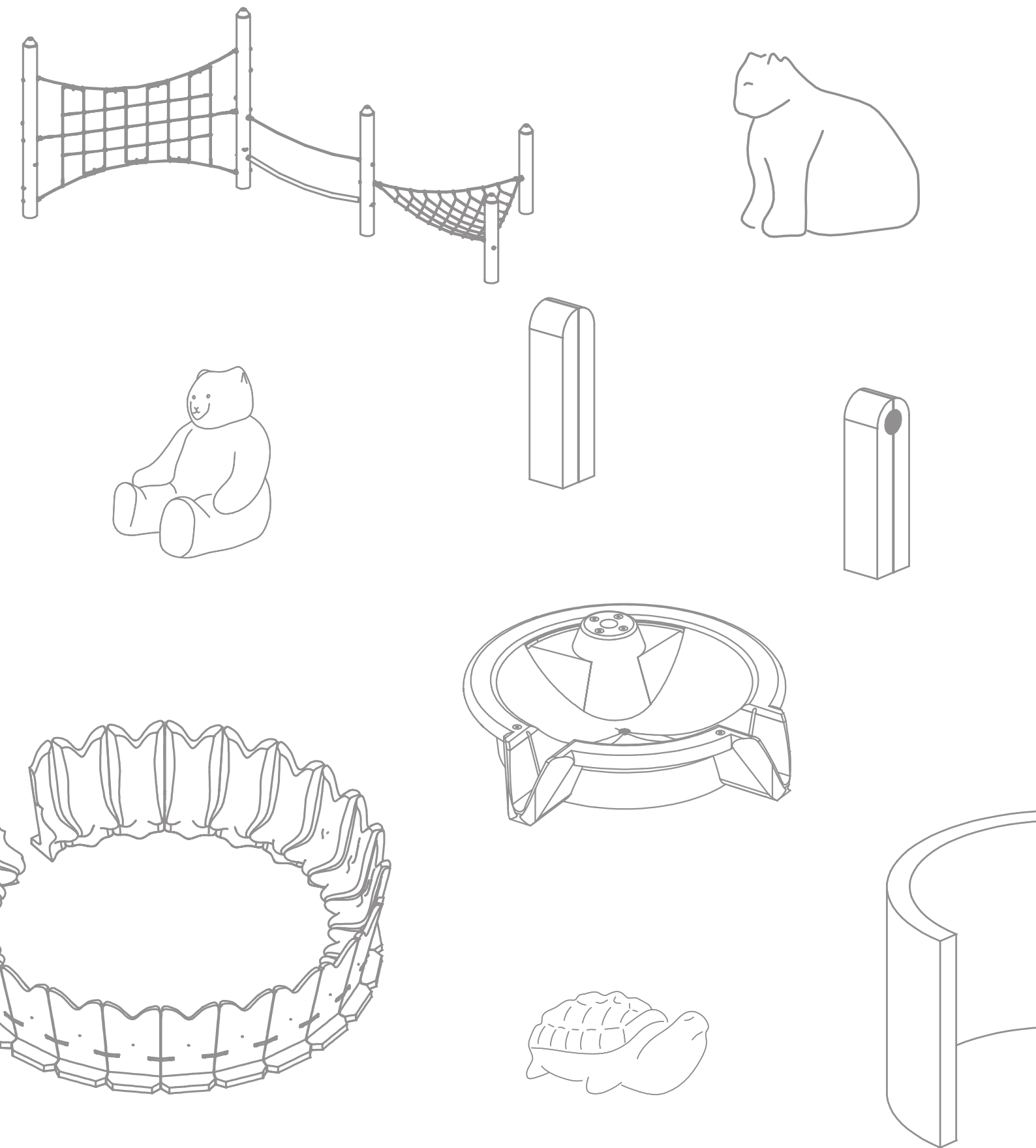
Rope Course

Thanks to its various vertical and horizontal net structures, the Rope Course is an exciting challenge for active children and young people who love to try out their acrobatic skills. As the posts and ropes provide enough space to accommodate large numbers of children at the same time, the course is well suited for heavily frequented playgrounds.

Fundamental characteristics:

- modular system based on cylindrical concrete columns
- strengthen self-protective reflexes
- exercise activity: climbing, balancing, role-playing games





The Safety. The Quality. **The Original.**

Richter Spielgeräte GmbH

D-83112 Frasdorf · Phone +49(0)8052-17980 · www.richter-spielgeraete.de

