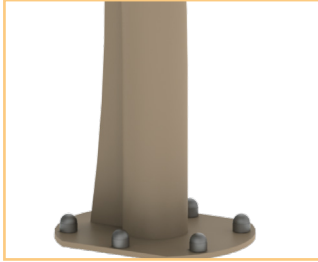




URBANIX

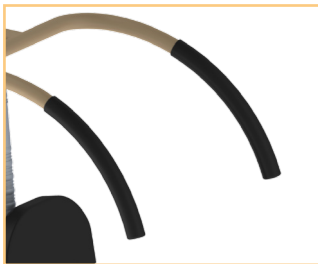
Technical specification



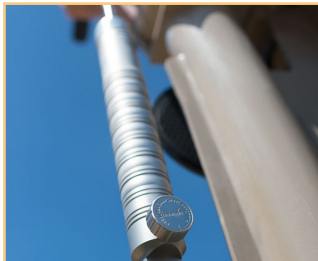
- 1- **The framework of the workstations** is made from 3.5 to 4mm thick, hot-dipped galvanised steel, protected by a polyester powder coated finish. This treatment provides high levels of durability, notably in coastal locations.



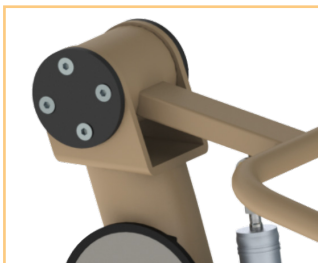
- 2- **The seats and back supports** are made from a polyurethane compound, providing a soft and ergonomic surface for the user, similar to those found in gym settings. The elements conform to the SGS TB117 fire test requirements.



- 3- **The handles** are made from elasticated EDPM, offering both durability and fire resistance. The material retains both its shape and feel across a wide temperature range -55°C à 120°C.



- 4- **The hydraulic oil piston** is made up of elements manufactured from chrome, aluminium and stainless steel. Users can adjust the resistance from just a few kilogrammes up to as much as 60kg on certain machines.



- 5- **The stainless steel, waterproof bearing** has been subjected to tests involving over 10,000 hours of constant use.



- 6- **The foot supports** are made from low density roto-moulded polyethylene (LDPE). This material has been chosen both for its hard wearing properties and its resistance to ultra violet rays. The supports have a textured finish in order to provide grip and reduce the appearance of scuff marks.