



14+



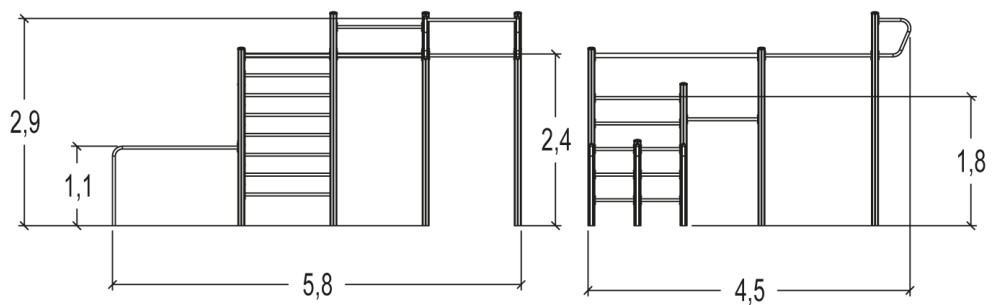
15



2,4m



1 = 4,56m 2 = 5,75m 3 = 3,02m



Play value

hanging



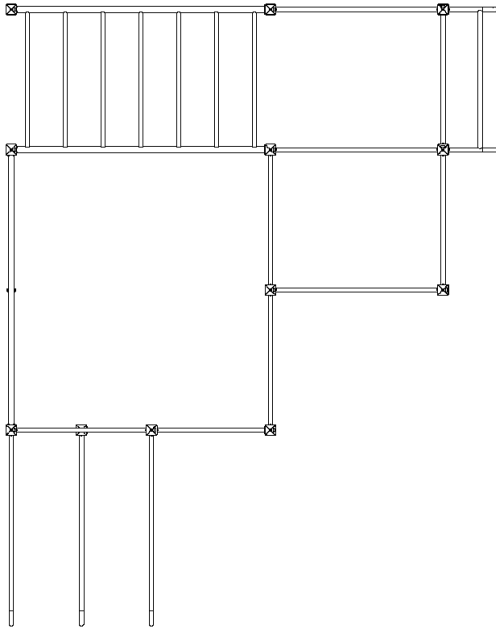
x4

climbing



x2


Number of play elements: 6

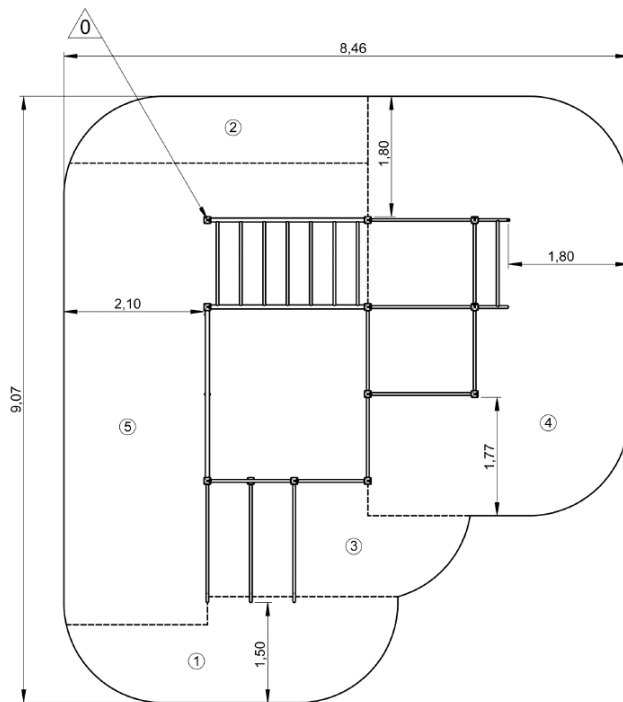




- ① Scale of suspension
- ② Horizontal bar L: 1,2m H: 2,4m
- ③ Set of Wall Bars: H: 1,9m
- ④ Parallel Bars
- ⑤ Pull-up bar
- ⑥ Set of Wall Bars: H: 2,4m

Installation of equipment

Impact area =

-  Impact area
-  Free space



		
1	1,12m	6m ²
2	1,43m	4m ²
3	1,72m	5,5m ²
4	1,92m	24m ²
5	2,4m	26,5m ²



2



06h00



1.37m³



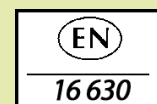
66m²



445kg



29kg



Proludic

0000-00-00