



14+



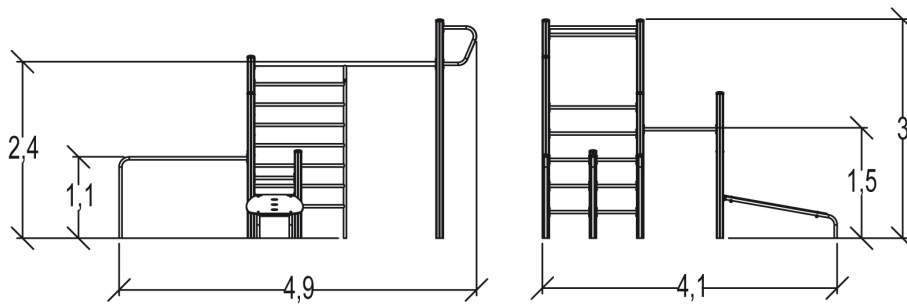
8



2,4m



1 = 4,07m 2 = 4,92m 3 = 3,02m



Play value

hanging



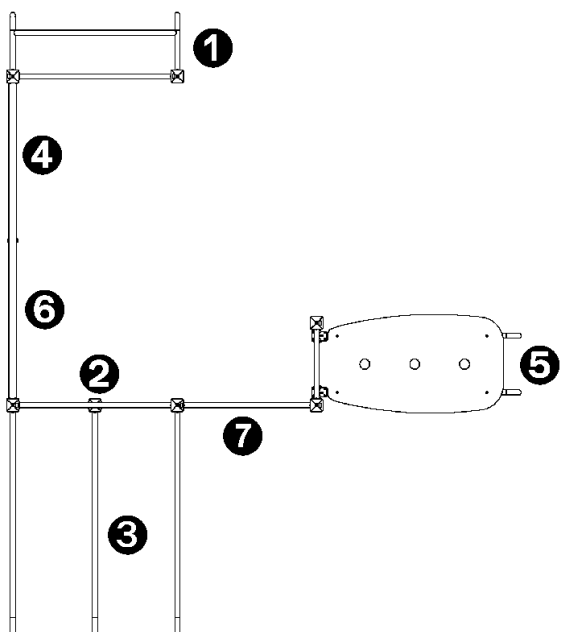
x5

climbing



x2

Number of play elements: 7

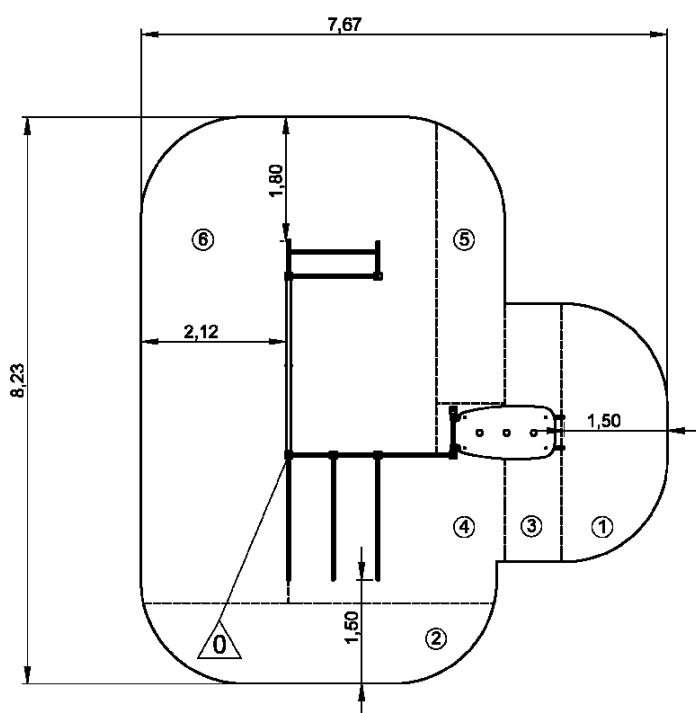




- ❶ Pull-up bar
- ❷ Set of Wall Bars: H: 1,9m
- ❸ Parallel Bars
- ❹ Set of Wall Bars: H: 2,4m
- ❺ PLANCHE ABDO
- ❻ Barre fixe L : 1,20 m - H : 2,80 m
- ❼ Barre fixe L : 1 m - H : 1,50 m

Installation of equipment

Impact area =

— Impact area
 - - - Free space



		
1	0,86m	5m ²
2	1,17m	5m ²
3	1,53m	3m ²
4	1,77m	7,5m ²
5	1,95m	4m ²
6	2,4m	25,5m ²



2



04h00



0.95m³



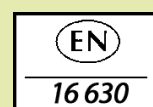
50m²



273kg



28kg



Proludic

0000-00-00