

ABS checkvalves

Non-return valves of cast iron or plastic for horizontal or vertical discharge lines in accordance with EN 12050-4.



ABS ball checkvalves

ABS ball checkvalves are designed for use in drainage and sewer mains. The unique design of a ball checkvalve allows free movement of the ball and at the same time a good seal. In operation, the ball moves so that the entire pipe cross-section is free.

Ball checkvalves are self-cleaning. Deposits on the ball which may form while it is in the closed position are removed by the rolling movement of the ball as it moves from the closed to the open position.

The ball recess chamber has a removable cover which allows for internal inspection without the need to remove the valve from the discharge line.

When fitting to horizontal discharge lines the ball recess chamber must be positioned above the horizontal axis of the valve.

Sizes:

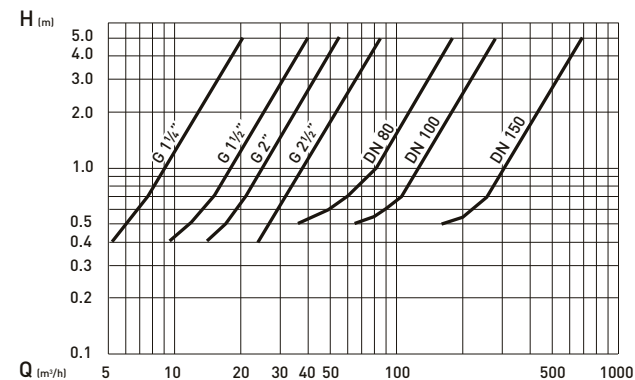
G 1¼", G 1½", G 2", G 2½" with internal thread.

DN 80, DN 100, DN 150 with drilled or radial slot flange connection.

Rated pressure: 10 bar



Head losses



H = Total Head Q = Discharge Volume

ABS flap checkvalves

The ABS flap checkvalve is a synthetic non-return valve for use in drainage and wastewater mains. Its two-piece design features a single disc seal that operates on a moulded rubber hinge, and when open makes the total diameter of the pipe available for the passage of the medium. This results in a minimal pressure drop and avoids deposits or blockage. Venting of the pipe can be achieved by removing the plug screw.

Sizes:

G 1¼", G 1½", G 2" with internal thread.

Rated pressure: 4 bar

Water test pressure: 6 bar

Features

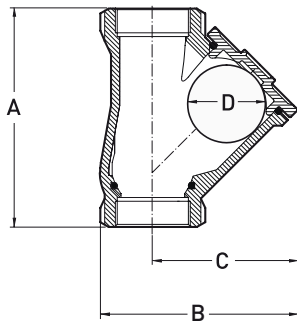
- Silent shut-off and effective sealing.
- No flutter of the flap in the case of long pipelines.
- Self-cleaning effect due to the ball movement.
- No wearing parts.
- Venting device (selected valves).
- Vertical or horizontal installation.
- Minimum head losses.
- Full pipe cross-section.

Materials

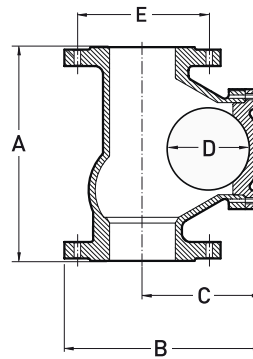
| Ball valves | |
|-----------------------|--------------------------------|
| Housing | Cast iron EN-GJL-250 |
| Ball (G 1¼" - G 2½") | Phenolic resin |
| Ball (DN 80 - DN 150) | NBR with hollow aluminium core |
| Fasteners | Stainless steel |
| Seal | NBR |
| Flap valves | |
| Housing | PBTP plastic |
| Flap seal | NBR |
| Plug screw R ¼" | Galvanised steel |

| Type | Size | Dimensions (mm) | | | | | Weight (kg) |
|--|--------------|-----------------|-----|-----|-----|-----|-------------|
| | | A | B | C | D | E | |
| Ball valve threaded | G 1¼" | 141 | 128 | 67 | 50 | - | 2.2 |
| | G 1½" | 150 | 136 | 72 | 53 | - | 2.8 |
| | G 2" | 175 | 159 | 85 | 62 | - | 3.9 |
| | G 2½" | 214 | 190 | 100 | 75 | - | 6.5 |
| Ball valve flange (drilled) | DN 80 | 260 | 248 | 146 | 112 | 180 | 15.0 |
| | DN 100 | 300 | 286 | 194 | 130 | 240 | 25.0 |
| | DN 150 | 400 | 381 | 240 | 172 | 295 | 46.0 |
| Ball valve flange (radial slot) | DN 80 | 260 | 245 | 150 | 100 | - | 15.0 |
| | DN 100 | 329 | 305 | 178 | 120 | - | 25.0 |
| | DN 150 | 407 | 385 | 245 | 190 | - | 46.0 |
| Flap valve threaded | G 1¼" - G 2" | 132 | 114 | 62 | - | - | 0.5 |

ABS ball checkvalves

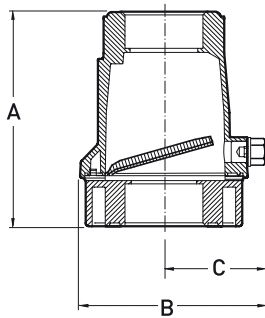


G 1¼" — G 2½"



DN 80 — DN 150

ABS flap checkvalves



G 1¼" — G 2"