



# DYNAMIC WEIGHER



## Features

- Capacities 2kg to 30kg.
- Up to 80 packs per minute (pack size dependent).
- Multiple reject options.
- 0-30vdc I/O.
- Protocol-RS232 / RS485 / Ethernet / Profibus.
- Average weight T1 and T2.
- Grading.
- Link to metal detector, bar coder, feeder systems and robotics.
- Self contained weigh head - fit, dial in and forget.
- On screen real time production criteria.
- On line printing and data communication to your computer system.
- Conforms to UK average weight and minimum weight legislation.

## Description

The **Dynamic Weigher** is a very versatile checkweigher / dynamic weigher. It is built to withstand the rigours of industrial and packhouse conditions, and manufactured in stainless steel as standard. The machinery is designed to exacting standards and will work with you to maximise production flow and give key indicators to minimise cost.

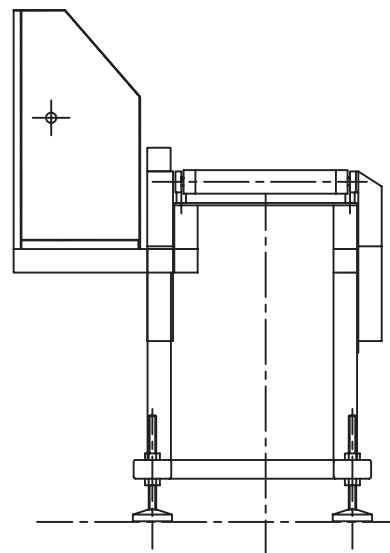
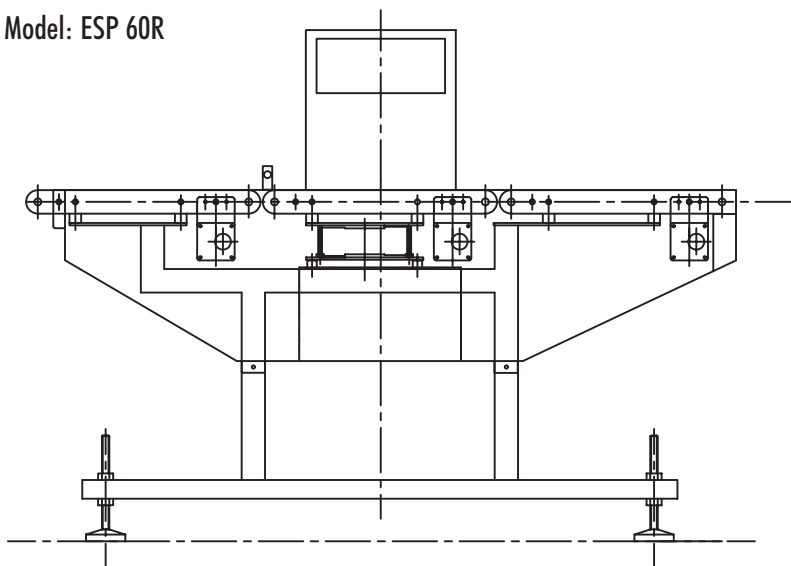
# ENGINEERING SPECIFICATIONS

## DYNAMIC WEIGHER

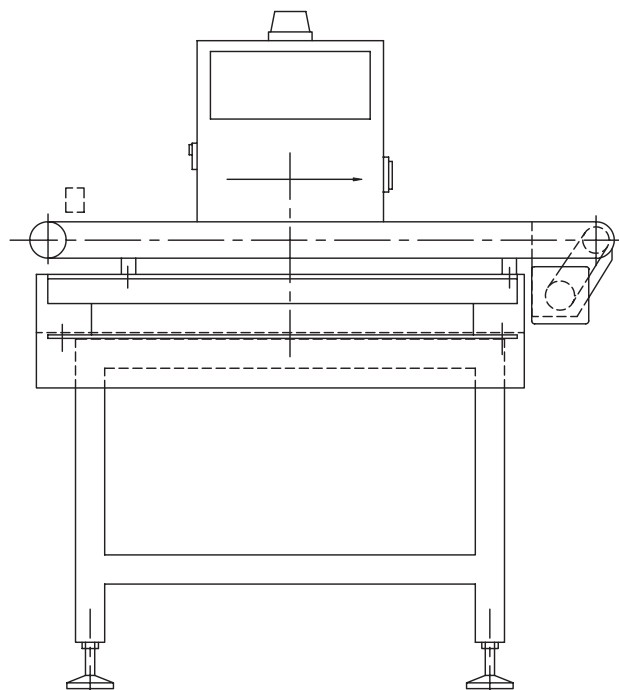
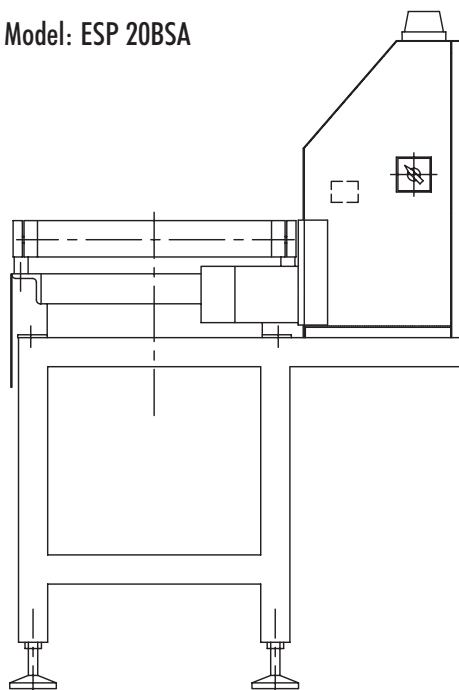
### Specifications

Electrical Supply:	220/240v AC
Air Supply:	Clean and dry min 3 bar (only required if reject is fitted).
Approvals:	Conforms to UK average weight and minimum weight legislation. CE approved.
Siting:	Firm and flat concrete or suitable level floor.

Model: ESP 60R



Model: ESP 20BSA



In the interest of continued product development, Applied Weighing reserves the right to alter product specifications without prior notice.

**APPLIED WEIGHING INTERNATIONAL LIMITED**, Unit 5, Southview Park, Marsack St, Caversham, Reading, England RG4 5AF

Tel: (0118) 9461900 Fax: (0118) 9461862 Email: [sales@appliedweighing.co.uk](mailto:sales@appliedweighing.co.uk) Web site: [www.appliedweighing.co.uk](http://www.appliedweighing.co.uk)

**APPLIED WEIGHING EUROPE**, Honingstraat 13, 2330 Merksplas, Belgium Tel: 003214652837 Fax: 003214652943 Email: [applied.weighing@telenet.be](mailto:applied.weighing@telenet.be)

Version 1.0