

FLAMMABLES & CHEMICALS UNIVERSAL TRANSIT BOXES BUNDLED DECKS
EMPTY BINS SITECAB TRUCKSAFE FUEL SAFE TOOLS SAFE STREET FURNITURE
VANDAL RESISTANT BINS AND GRATES BRIDGES GATES FENCING SAFE SECURE



FLAMMABLE LIQUIDS UNIVERSAL WASTE HAZARDOUS WASTE
EMPTY BINS SITE LAB TRUCKSAFE FUEL SAFE STREET FURNITURE
VANDAL RESISTANT BINS AND SEATS BRIDGES GATES FENCING SAFE SECURE

COMPREHENSIVE GUIDE

SITESAFE



Cleveland Sitesafe Ltd. began from our own needs as grounds maintenance contractors to solve exactly the same problems that you have:

Really secure storage for tools, fuel and equipment.

Proper compliance with Codes of Practice and Legal Requirements for Storage of Chemicals and Flammables.

Provision of secure canteen, office and toilet facilities on site.

The main criteria was for units with a high degree of security combined with the ease of relocation which would stand the rigours of everyday use, yet only need the minimum amount of maintenance. For units which are either purely practical or sympathetic to their surroundings, we trust you'll find the following pages of interest.


M.J. Scaife
Managing Director



Email: sales@cleveland-sitesafe.ltd.uk

website: www.cleveland-sitesafe.ltd.uk

Head office tel: **01642 244663** fax: **01642 244664**

SITESAFE Contents



Hazardous Substance Stores

Transit Box, Universal, Chemsafe, Flamsafe, Gas Bottle Stores & Cages, Bunded Decks, Drumsafe, Fuelsafe. A comprehensive range of stores for the safe and secure storage of chemicals and flammables.

04

Housing Units

SITESAFE Housing Units for: Pumps, generators, water treatment plants, electric switch gear, chemical filtration equipment, quarry control rooms etc.

12

Tool, Equipment & Plant Storage

Trucksafe, Truckbox, Sitebox, Toolbox, Workbench, Toolsafe, Apex Toolsafe, Link Units. From Hand and Power tools to lawn mowers, tractors and loading shovels - a highly secure unit to suit your needs.

14

Sitecab

Site Office, Canteen, Welfare Unit, Changing Room.

With Sitecabs our accent is always on the provision of a very secure relocatable facility designed to your specification.

22

Apex Modular Buildings

Office, Garage, Workshop, Pavilion, Playschool or Visitor Centre.

Designed and manufactured to your specific needs.

24

Layout Guide

Examples of a wide variety of designs for Changing Rooms, Garages, Pavilions, Weighbridge offices and many more.

30

Recreational Steelwork

Seats, Bridges, Picnic Tables, Dog Grids, Kissing Gates.

Highly effective, attractive and practical park and street furniture made the Sitesafe way.

32

SITESAFE Solutions

Bunker Walls, Bikesafe.

34

Interior and Exterior Finishes

36

Design Your Own

37

Transit Boxes

For the safe and secure movement of chemicals, flammables and spraying equipment.

Standard features

Vapour seals

Over centre locks

Lifting handles

Drilled fixing flanges

Warning signs

Supplied powder coated.

Red - for flammables

Grey - for chemicals



Transit Box 30
500mm x 360mm x 460mm
20" x 14" x 18"
Capacity - 30L



Transit Box Special
750mm x 430mm x 560mm
30" x 17" x 22"
Capacity - 4 Jerry cans / 80L



Transit Box 40
650mm x 360mm x 460mm
26" x 14" x 18"
Capacity - 40L

Lance Transit Boxes



LT1

LT1

Subdivided into three sections which are notched to accept lightweight lances and will accommodate smaller knapsack sprayers along with chemicals & clothing

1000mm x 430mm x 560mm
40" x 17" x 22"

LT2

A longer box divided into four to hold C.D.A. lances, active ingredient, cleaner & P.P.E.

1131mm x 430mm x 560mm
44" x 17" x 22"



LT2

Hazardous Substance Stores

Universal

Conforms to Flammable & Chemical Storage Regulations.

The cost-effective indoor and outdoor secure storage solution for chemicals and flammables. Manufactured from 3mm steel plate.

Universal 180

686mm x 635mm x 1245mm
27" x 25" x 49"
Capacity: 180L
Weight: 139kg



Universal 350

1270mm x 635mm x 1245mm
50" x 25" x 49"
Capacity: 350L
Weight: 181kg



Universal 550

Features extra fitted shelf
1270mm x 940mm x 1422mm
50" x 37" x 56"
Capacity: 550L Weight: 252kg



Universal 700

Features extra fitted shelf
1549mm x 940mm x 1422mm
61" x 37" x 56"
Capacity: 700L
Weight: 280kg



Standard features

Sitesafe locking system

Spillage retention sump with drain point

Removable interior steel deck (chemical version only)

Ventilators

Sliding shelf

Anchor points

Fork lifting points

Gas strut & lid retainers

Available in any BS or RAL colour

Optional

Flame arrested or low level covered gas vents

Divided sumps with extra drain points

Drop down front

Split lids

Digital locking

3 point linkage



Universal 270

940mm x 635mm x 1245mm
37" x 25" x 49"
Capacity: 270L
Weight: 155kg

Chemsafe



Chemsafe 440
1.25m x 1.25m x 2.0m
4'1" x 4'1" x 6'6"
Capacity: 440L / kg
Weight: 406kg

For Interior Cabinets see page 12

Standard features

- Integral spillage retention sump
- Sump drain points
- Sectional Kennedy grate or durbar plate floor
- 'Sitesafe' locking system
- Fork lifting points
- Lifting lugs
- Lipped shelving
- Frame dogs
- Anti-Jemmy strip
- High and low level vents

Purpose made highly secure, flame resistant units. Made to order, each unit can accommodate a wide variety of storage options for small, medium or large scale internal and external siting.

Manufactured from 3mm steel plate and supplied in grey, green, blue, red or a B.S./RAL colour of your choice complete with appropriate warning signs.



Chemsafe 1300
1.85m x 1.85m x 2.56m
6'1" x 6'1" x 8'5"
Capacity: 1300L / kgs Weight: 820kg

Chemsafe 4000



Chemsafe 2300



Chemsafe 2300
2.74m x 1.85m x 2.82m
9' x 6'1" x 9'3"
Capacity: 2300L/kgs



Chemsafe Spraysafe 1300
Incorporates a 2,200 Litre/500 gallon water tank and fast-filling boom
1.85m x 1.85m x 3.25m
6'1" x 6'1" x 10'8"
Capacity: 1300L / kgs
Weight: 1050kg



Chemsafe 9000
5.53m x 2.92m x 2.84m
18' x 9'6" x 9'3"
Capacity: 9000L / kgs



**Chemsafe 5000
end door**
4.57m x 2.44m x 2.82m
15' x 8' x 9'3"
Capacity: 5000L/kgs

Hazardous Substance Stores



Acts of Parliament cover storage and transit of potentially harmful materials.

Following these Acts come guidelines and codes of practice from interested monitoring bodies such as the Health & Safety Executive, the Environment Agency, BASIS, the Fire Brigade and Trading Standards which help translate the legal requirements into storage and handling criteria. Sitesafe aim to ensure our products meet or exceed the criteria set by these organisations.

PLEASE REMEMBER LEGAL REQUIREMENTS AND CODES OF PRACTICE ARE FOR THE PROTECTION OF EVERYONE.

IT IS DANGEROUS TO STORE FUEL AND CHEMICALS IN THE SAME UNIT. WHEN SITING STORAGE FACILITIES, PLEASE TAKE EXPERT ADVICE FROM YOUR LOCAL AUTHORITY, WATER BOARD (POLLUTION CONTROL OFFICER), THE HEALTH AND SAFETY EXECUTIVE AND THE FIRE BRIGADE.

N.B. IN SCOTLAND THE LOCAL COUNCIL DRAINAGE OFFICER AND THE RIVER PURIFICATION BOARD MUST BE NOTIFIED OF THE EXISTENCE AND LOCATION OF THIS TYPE OF STORAGE.



Chemsafe 5000
4.57m x 2.44m x 2.82m
15' x 8' x 9'3"
Capacity: 5000L/kgs

Options available

Size and Layout

Sectional Durbar plate floor

Internal lockers (for poisons etc)

Emergency shower

Sink unit or wash hand basin

Paper towel holder

Soap dispenser

Outside tap

Knapsack shelf

Extra shelving (fixed, freestanding or adjustable)

Flame arrested vents

Three point linkage

Locker rooms

Divided sumps with separate drain points

Cranked risers (for pump emptying)

Full insulation

Fire resistant linings

Intumescent seals

Heating and lighting

Fully zoned electrical fittings and wiring

Gas detectors

Sprinklers

Compressed airlines

Mixing tables/Prep benches

Extractor fans (manual or door operated)

Full air conditioning

Radiators

Single or double opening Sitesafe doors

Internal solid half glazed or fully glazed doors

Windows complete with Sitesafe shutters

Access ramp

Steps and door canopies




**Chemsafe 6000 with
optional poisons
cupboard**

Flamsafe



Flamsafe special
Oil & paint store
5.03m x 2.44m x 2.67m
16'6" x 8' x 8'9"



Flamsafe Cabinet B (with sump)
1.85m x 1m x 2.08m
6' x 3'3" x 6'10"
Sump Capacity: 275L



Gas Bottle Storage

Manufactured to customer specification, these units offer a robust solution to gas bottle storage. Made from 3mm x 35mm x 35mm pressed angle steel. Security features include top hinge reversal preventing door removal and boxed padlock mount. Supplied with pre-drilled fixing points in ready assembled or kit form.

Bunded Decks

For interior and exterior temporary or semi-permanent storage and spillage retention of chemicals, diesel, oils, flammables and hazardous products.

Manufactured to customer specification on deck area and retention capacity using seam welded 3mm steel plate and fitted with Kennedy grate floor, fork lift points and sump drain.

1 drum bund



Used for oil storage
1.98m x 1.22m x 0.305m
78" x 48" x 12"
Capacity: 736L / 162gal



Standard Sizes			
	Length	Depth	Height
1 Drum	800mm (31")	800mm (31")	485mm (19")
2 Drum	1500mm (59")	800mm (31")	300mm (12")
4 Drum	1500mm (59")	1500mm (59")	300mm (12")
6 Drum	2100mm (83")	1500mm (59")	300mm (12")
8 Drum	2700mm (106")	1500mm (59")	300mm (12")
Other Sizes Available on Request			

Hazardous Substance Stores

Fuelsafe

Highly secure, integrally bunded fuel storage designed with current and proposed legislation in mind. Manufactured from profiled 3mm steel plate



Fuelsafe 250

Apex roof
Sump capacity allows for additional storage of 1 x 45-gallon & 4 x 5-gallon drums
2.10m x 1.85m x 3.12m
6'11" x 6'1" x 10'3"
Tank Capacity: 1100L / 250gal



Fuelsafe 1000

Apex roof
Sump capacity allows for additional storage of 4 x 45-gallon & 4 x 5-gallon drums
4.11m x 2.9m x 3.12m
13'6" x 9'6" x 10'3"
Tank Capacity: 4900L / 1100gal



Fuelsafe 500

Apex roof
Sump capacity allows for additional storage of 2 x 45-gallon & 4 x 5-gallon drums
2.94m x 2.44m x 3.12m
9'7" x 8'0" x 10'3"
Tank Capacity: 2200L / 500gal



Fuelsafe 1500

Apex roof
Sump capacity allows for additional storage of 4 x 45-gallon & 8 x 5-gallon drums
5.18m x 2.9m x 3.12m
17' x 9'6" x 10'3"
Tank Capacity: 6600L / 1500gal

Standard features

Integral spillage retention sump
Sectional '3mm steel plate floor' floor overlaid with 5 bar anti-slip aluminium
Lifting lugs
High and low level weatherproof vents
Lipped shelving
Tool hanging prongs
Painted in any B.S. or RAL colour
Electric diesel pump c/w delivery hose and flow meter
Fuel level gauge
Electric lighting
Fork lifting points
Top lifting lugs
Glove & paper dispenser
Sitesafe locking mechanism
Optional Electronic Oil Watchman

Drumsafe



Drumsafe
Shown above with optional
slatted vents

A Drumsafe can be designed to any size to safely accommodate your chemicals/flammables.

Standard Features

Robust all steel construction

'Portable' easy to re-site in a new location

Manufactured from profiled 3mm steel plate

Painted in any B.S. / RAL colour

Forklifting points

Lifting lugs

High and low level weather proof vents

Sitesafe locking mechanism

Anti jemmy strips

7 lever lock

All relevant warning signs

Designed with current and proposed legislation in mind

Fully seam welded construction including the sump (sump capacity complies with current regulations.)



Drumsafe 16
3.35m x 1.5m x 3.48m
11' x 4'11" x 11'5"



Drumsafe 2
(with shelves)
1.67m x 1.00m x 1.93m
5'6" x 3'3" x 6'5"



Drumsafe 8
Double front doors

3.35m x 1.5m x 1.9m
11'0" x 4'11" x 7'4"



Drumsafe 4
Double front doors
1.67m x 1.5m x 1.9m
5'6" x 4'11" x 7'4"



Drumsafe 16
Shown storing IBC and Drums



Drumsafe 16
(with optional sliding doors)



Drumsafe 24
Holds 24 standard pallets or IBC's
4.43m x 1.50m x 3.48m
14'6" x 4'11" x 11'5"
Options:
Wing Doors
Roller Shutter Doors
Sliding Doors
Thermal Insulation
Electric Lighting Heating etc



Drumsafe 32
Holds 32 standard pallets or IBC's
6.70m x 1.50m x 3.48m
22'0" x 4'11" x 11'5"
Options:
Wing Doors
Roller Shutter Doors
Sliding Doors
Thermal Insulation
Electric Lighting Heating etc

Housing Units



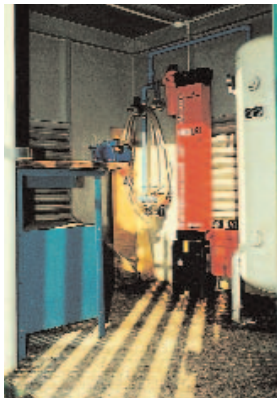
Water Treatment Plant



Slurry Pump Housing



**Telecommunications
Equipment Housing**



**Compressor Housing
Emission Control
Landfill Site**



Switch Room



Switch Room Control Room Stacker



**Irrigation Pump
Housing**



**Pump/control Room
Housing**



Control Room

Standard features

3mm steel plate construction; 3mm or 6mm durbar plate floors; 7 lever door locks; High and low level vents; Fixed lifting lugs; 6 point door security fittings; Anti-Jemmy strips; Fork lifting points



Switch Room

**Pumps - Generators - Compressors -
Switch Gear - Pressure Washers -
Tanks - Treatment Plants etc.**

Housing Units



Agro - Chemical Filtration Plant



Hydraulic/Water Pump Housing



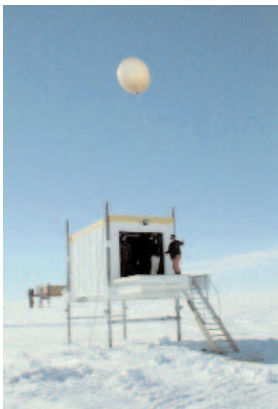
Effluent Treatment Plant



Vedette



Auto-Generator for Radio Equipment



Weather Balloon Launch Platform



Steel Erectors Plant Unit

Options

Interior personnel doors

Windows complete with Sitesafe shutters

ISO corner blocks

Retractable lifting lugs

Louvered vents

Exhaust ducts

Steps and gantrys

Fixed ladders

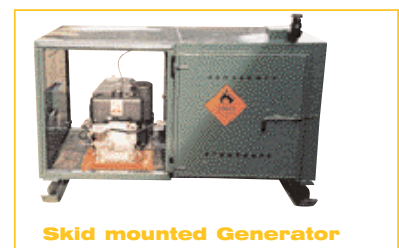
Internal linings

Insulation, either fire resistant or high performance

Electrical wiring and plumbing

Cable trays

Anti-graffiti coating



Skid mounted Generator

At Sitesafe:

A full design and installation service is available. Equipment can be fitted, tested and delivered to site by Hi-Ab vehicle (crane off loading arranged if necessary). Exterior paint finish in B.S. / RAL colour of your choice, customised if required with wooden or brick cladding, masonry finish and steel tiled roof - your choice.

Flat roof - Pitched Roof - Mono Slope - Drop over - One Piece - Modular - Stacking - Cabinet - Top or Side Openers

Toolbox/Saw Box Workbench

Making sure your hand and power tools, disc cutters and chain saws stay where you left them is a priority. Either fixed inside a vehicle or using the optional chain anchorage points for sitework, it's a very strong box.



Standard features

- 3mm Steel construction
- Heavy duty piano hinge
- Lid retainers
- Sitesafe lock
- Lifting handles
- Finished in yellow

Size:

- 914mm x 406mm x 406mm
- 3' x 1'4" x 1'4"

This highly secure 3mm steel cabinet based workbench is ideal for both site and workshop use. Features a tool drawer, full width sliding shelf and doors fitted with tool racks and parts retainers. Available with a vice and a wooden bench top insert if required.

Supplied in Sitesafe grey

Standard features

- Double opening doors complete with anti-jemmy strip
- Frame dogs
- Sitesafe locks
- Built in fork lifting points
- Lipped worktop

Size:

- 1333mm x 762mm x 902mm
- 4'4 1/2" x 2'6" x 2'11 1/2"



Universal Special

- 2438mm x 990mm x 1219mm
- 8' x 3'3" x 4'
- Features drop front



Welded name plates for individual employees can be fitted.

Sitebox



Sitebox 5'

- 1520mm x 665mm x 875mm
- 5' x 2'2" x 2'10"

Sitebox 4' and Sitebox 6' are also available

A first class economy weatherproof site or workshop tool storage unit. With the lid closed, it provides a working area strong enough to hammer on and large enough to saw or fit a vice on at a convenient height.

Standard features

- Drop down front
- Two shrouded padlock mounts in 3mm steel plate
- Fork lifting points
- Gas strut
- Lid retainer
- Anti-jemmy strip
- Full length interior shelf
- Optional chain anchorage points
- Optional internal sitesafe locking



Truck Box

Designed for smaller trucks or pickups with a lower payload. The Truck Box provides simple no nonsense strength and security in 3mm steel. The length can be modified to suit your vehicle and it can be fitted with dividing sections, strimmer slots and/or internal Sitesafe locks if required.



Tool Equipment & Plant Storage

Standard features

Weatherproof angled or flat lid
Universal type hinges
Base supports
Fully welded, completely shrouded padlock mount

Standard Sizes

	Length	Depth	Ht Back	Ht Front
Truck 3'	955mm 37.5"	533mm 21"	495mm 19.5"	406mm 16"
Truck 4'	1260mm 49.5"	533mm 21"	495mm 19.5"	406mm 16"
Truck 5'	1560mm 61.5"	533mm 21"	495mm 19.5"	406mm 16"
Truck 6'	1870mm 73.5"	533mm 21"	495mm 19.5"	406mm 16"

But...

Truck boxes will be made to your own requirements

Trucksafe

For the operator on the move combining secure weatherproof storage with unrestricted rear view. Manufactured from 3mm Steel Plate these units are also widely used for chemicals, flammables and as workshop 'lock-ups'.

The Trucksafe standard range:

(L,D,H)
Non standard lengths can be made to order

Model 2'
610mm x 625mm x 775mm
2' x 2'1" x 27"

Model 3'
915mm x 625mm x 775mm
3' x 2'1" x 27"

Model 4'
1220mm x 625mm x 775mm
4' x 2'1" x 27"

Model 5'
1524mm x 625mm x 775mm
5' x 2'1" x 27"

Model 6'
1829mm x 625mm x 775mm
6' x 2'1" x 27"



Standard features

Sliding lift-out tool tray
Sitesafe locks
Liquid-tight base
Fork lifting points
Ventilators
Gas struts
Drain point

Optional features

Dividing sections
Strimmer slots
Extra tool tray/shelf
Drop down front

Toolsafe & Toolsafe 'Apex'



Apex Garage 20/10
6.15m x 3.05m x 3.35m
20' x 10' x 11'



Model 208
6.15m x 2.46m x 2.34m
20' x 8' x 7'8"



Custom made Toolsafe



Model 96 - Wooden Clad
2.76m x 1.85m x 2.53m
9' x 6' x 8'3"



Model 188
5.53m x 2.46m x 2.34m
18' x 8' x 7'8"



Cabinet A
1.34m x 0.83m x 2.08m
4'5" x 2'9" x 6'10"

Strimmer prongs



Extremely secure on-site storage or workbase. Escalating insurance premiums and costs of replacement compound the annoyance, inconvenience and upset caused by theft and vandalism. Toolsafe units will give you a massive advantage over criminals and vandals. Engineered for strength and craftsman made to the highest standards, a Toolsafe is your front line insurance cover.

Holding anything from hand tools to tractors a TOOLSAFE will form an essential part of your workplace by providing highly secure on-site storage or acting as a workbase in it's own right.

All units are made from 3mm steel with 6mm Durbar plate floors (Cabinets 3mm) and fitted with the Sitesafe locking mechanism. All have lifting lugs and high and low level weatherproof vents. Where practical, units are fitted with 3 rows of fixed shelving complete with a hand tool hanging rack.

Detailed construction schedules are available on request.



Model 96
2.76m x 1.85m x 2.23m
9' x 6' x 7'3"

Tool Equipment & Plant Storage

Model 148
(with equipment racks)
4.30m x 2.46m x 2.34m
14' x 8' x 7'8"



Cabinet B
1.85m x 1.00m x 2.08m
6' x 3'3" x 6'10"



Model 126 - Centre door
3.69m x 1.85m x 2.23m
12' x 6' x 7'4"



Model 66 - Interior
1.85m x 1.85m x 2.23m
6' x 6' x 7'4"



Model 168
4.92m x 2.46m x 2.34m
16' x 8' x 7'8"



Model 18/95 Apex Garage
(with profiled roof)
5.53m x 2.92m x 3.05m
18' x 9'6" x 10'

Popular Toolsafe Sizes

Cabinet A	1.34m (53")	x 0.83m (33")	x 2.08m (82")
Cabinet B	1.85m (72")	x 1.00m (39")	x 2.08m (82")
Model 66	1.85m (6'0")	x 1.85m (6'0")	x 2.23m (7'4")
Model 96	2.76m (90")	x 1.85m (6'0")	x 2.23m (7'4")
Model 126	3.69m (12'0")	x 1.85m (6'0")	x 2.23m (7'4")
Model 128	3.69m (12'0")	x 2.46m (8'0")	x 2.34m (7'8")
Model 148	4.30m (14'0")	x 2.46m (8'0")	x 2.34m (7'8")
Model 168	4.92m (16'0")	x 2.46m (8'0")	x 2.34m (7'8")
Model 188	5.53m (18'0")	x 2.46m (8'0")	x 2.34m (7'8")
Model 208	6.15m (20'0")	x 2.46m (8'0")	x 2.34m (7'8")
Maxi 15	4.61m (15'0")	x 2.92m (9'6")	x 2.34m (7'8")
Maxi 20	6.15m (20'0")	x 2.92m (9'6")	x 2.34m (7'8")

Please Remember: Lengths, Heights, Widths and Colours can be varied to suit your own circumstances.



Model 148 Apex Interior
4.3m x 2.46m x 2.92m
14' x 8' x 9'6"



Maxi 15 Interior
4.61m x 2.92m x 2.34m
15' x 9'6" x 7'8"



Model 14/95 Apex
(with profiled steel roof and centred doors)
4.3m x 2.92m x 2.92m
14' x 96" x 96"



Model 96 - Interior
2.76m x 1.85m x 2.1m
9' x 6' x 6'10"



Apex Garage 24/10
7.38m x 3.38m x 3.35m
24' x 10' x 11'



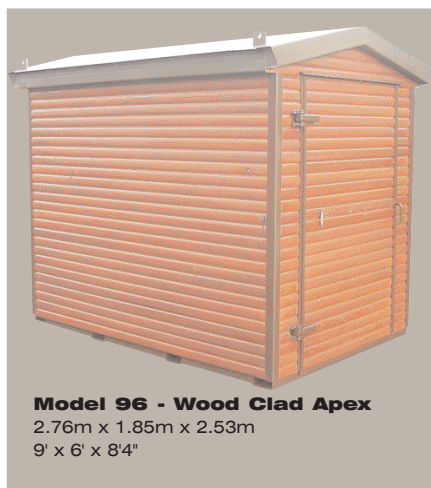
Model 148 - Interior
4.3m x 2.46m x 2.46m
14' x 8' x 8'



Model 108 - Wooden Clad Apex
3.38m x 2.46m x 2.92m
10' x 8' x 96"



Apex Model 208
- Centre door
6.15m x 2.46m x 2.92m
20' x 8' x 96"



Model 96 - Wood Clad Apex
2.76m x 1.85m x 2.53m
9' x 6' x 8'4"

Movement



Lifting Lugs
For Hi-Ab or crane



Skid base



Hook lifter frame



Skip loader



Forwarder
Lifting Frame



Forklift pockets



**Apex tile effect toolshed
as allotment store**

Tool Equipment & Plant Storage



Maxi 20
6.15m x 2.92m x 2.34m
20' x 9'6" x 7'8"



Maxi 20 Apex
6.15m x 2.92m x 2.92m
20' x 9'6" x 9'6"



Apex Model 168
4.92m x 2.46m x 2.92m
16' x 8' x 9'6"

Toolsafe & Toolsafe 'Apex'

Key Benefits

Fully secure and
vandal proof.
Durbar plate floors.
Sitesafe locking
mechanism.

Options available for Toolsafe Units

Integral access ramp.
Retractable lifting
eyes.
Lipped shelving
(fixed/adjustable)
Windows (c/w
Sitesafe Shutters)
Single/Double doors
(end/centre placing)
Personnel doors.
Base drilling or fixing
points.
Cable access.

Extractor fans.
Roof top tanks.
Consumer units.
Vice benches.
Tool cupboards.
Hitch slots.
Hand tool racks.
Skip lugs.
Hook lifter frames.
Fork lift points.
270° door opening.
Lockers.
Storage bins.
Work benches.

Power points.
Transformers.
Insulation.
Towing skids.
3mm floor.
Plumbing.
Heating.
Lighting.
Vandal proof coating.
Wood cladding.



Maxi 15
- on hooklifter frame
4.61m x 2.92m x 2.34m
15' x 9'6" x 7'8"

Tractor Safe 1586
4.57m x 2.59m x 2.82m
15' x 8' 6" x 9' 3"



Model 168 - interior
4.92m x 2.46m x 2.34m
16' x 8' x 7'8"

Link Units

Why 'Link' Units ?

Larger pieces of moveable plant have always been difficult to secure overnight, due to physical size. Old shipping containers just aren't big enough or strong enough.

A link unit is:



Taller



Wider

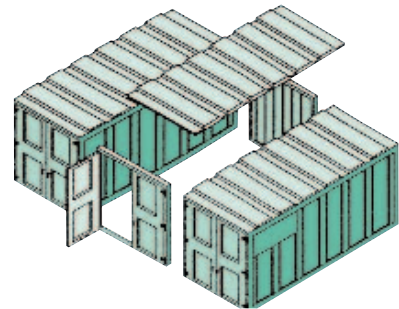
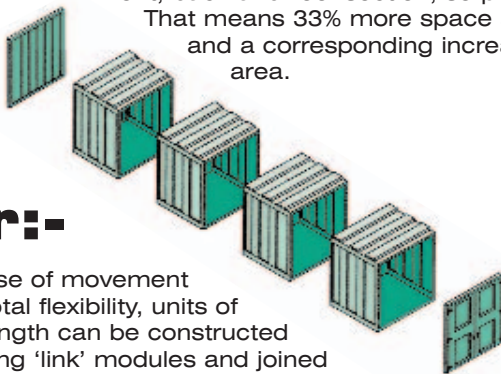


Stronger



But:-

two single units can be linked together by adding a front, back and roof section, so providing a third. That means 33% more space at a minimal cost and a corresponding increase in the stacking area.

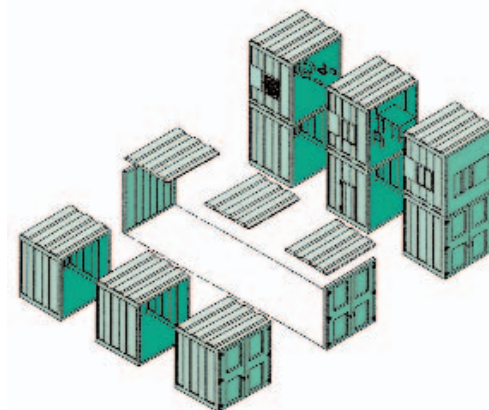


Or:-

for ease of movement and total flexibility, units of any length can be constructed by using 'link' modules and joined using 'link' sections.



Alternatively a modular 'linked' stacker unit:-



Link Unit Special (extra tall)

10.06m x 3.66m x 4.06m
33' x 12' x 13'4"



Tool Equipment & Plant Storage



Sitesafe Link Units are manufactured from profiled 3mm steel plate and can be supplied with or without floors (Heavy Duty or Deck)

Standard features

High and low level protected air vents

Lifting lugs / fixing points

Units are available in any B.S / RAL colour

Complete Single Units available in sizes of:

'Link' Model 108

7391mm x 3099mm x 3521mm (L,W,Ht)

24'3" x 10'2" x 10'8"

Door clearance: 2870mm x 3048mm (W,Ht)

9'6" x 10'

'Link' Model 88

6096mm x 3099mm x 2642mm (L,W,Ht)

20'0" x 10'2" x 8'8"

Door clearance: 2870mm x 2413mm (W,Ht)

9'6" x 7'11"

(Modular Units)

As above BUT in BOLT TOGETHER modules of 2895mm (9'6") in length (double doors and end panels fitted).

Or complete with separate BOLT ON double door and end panels.

Just add or subtract modules to suit your site.



Link model 88



Link Unit 134



Link Unit 108 (extra wide)

7.39m x 3.66m x 3.25m
24' x 12' x 10'8"



Link model 108

**Garage - Workshop - Stores - Canteen
Office - Stacker - or any combination**

21



Kiosk interior

Apex Sitecab 108
(wooden clad & steel tile roof)



Kitchen units



Apex Sitecab 14/95 - welfare unit
(masonry finish & profiled steel roof)

Sitecab & Sitecab Apex

With site accommodation units, our accent is always on the provision of a highly secure relocatable facility designed around your needs. There is absolutely no substitute for the quality, security and complete freedom of choice offered by Sitecab. The range of facilities includes changing rooms, sports pavilions, car park attendants cabins, sophisticated offices, canteens, tool stores, changing rooms, toilets and shower accommodation.



Sitecab 208



Electric heating



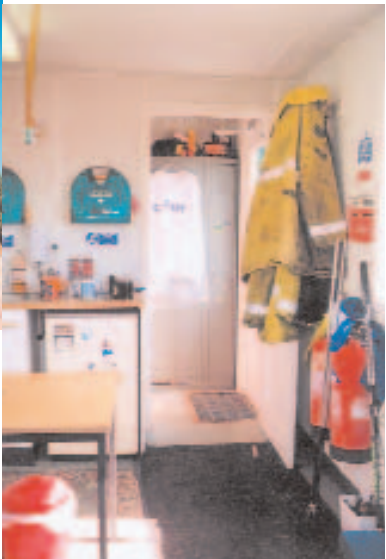
Attendants cabin



Sitecab 208 stacking unit



Disabled toilet



Sitecab 40/95 canteen

Sitecab & Sitecab 'Apex'



Sitecab Hooklifter welfare unit



Sitecab Hooklifter office

Weighbridge office and gantry



Sitecab 40/10 - Waiting room / Ticket office



Sitecab 30/95 - Office / Canteen / Toilets



Ticket office



Sitesafe shutter and sliding window



Sitecab stacker & gas cage



Pavilion

Hooklifter welfare unit



Shower unit

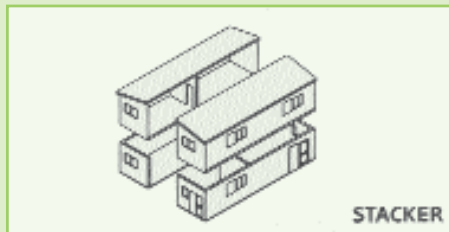
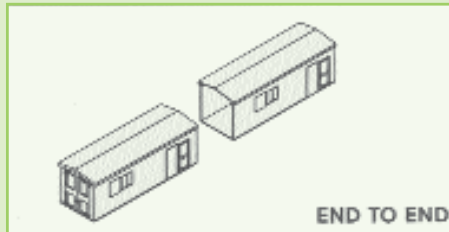
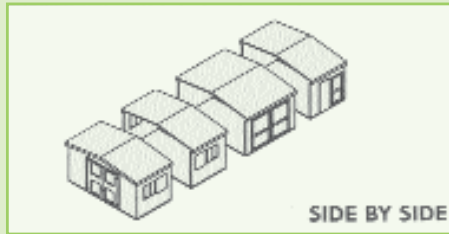


provides a different dimension



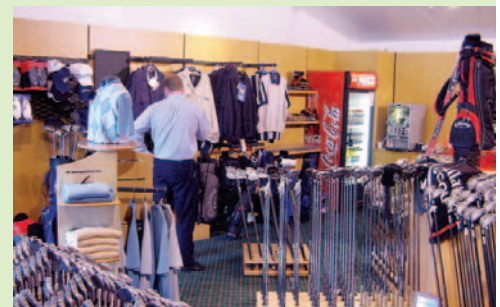
The cost effective way to increase space and flexibility. Sitesafe 'Apex' units are specifically designed for those situations where a secure steel workbase or accommodation unit has to blend in with it's surroundings. Standard portable buildings and second hand shipping containers, although functional, cannot be regarded as aesthetically pleasing, in fact they are often downright ugly.

Apex and Apex Modular Buildings



An 'Apex' unit will give more headroom, allow higher access doors and provide a much greater feeling of spaciousness. Moreover, an 'Apex' unit can be pitched either along its length or width, allowing a number of modules to be fitted together on site. They can even be extended at a later date to meet your requirements for space increases.

With a tremendous range of interior fittings the outside touches come from your own choice of finish, exterior coating or real wood cladding in a log roll finish, with Cambrian grit roof covering if required. You can also have your 'Apex' clad with a brick finish in the colour of your choice and we give you the option of having your roof covered using steel tiles.



Model '18' x 5 module
Children's playgroup centre



Shop and Ticket Office Pitch and Putt

Apex Tennis Pavillion - Wood Clad with Parctile Roof



Apex Chalet Style Pavillion - Wood Clad with Parctile Roof

Playground Store - Parctile Roof and Brick Cladding



Youth Centre

Apex Chalet Style Security Cabin





**Apex Modular Bowles Pavilion -
Wood Clad with Parquetry Roof**



**Apex Modular Golf Course
Club House**



**Apex Modular Field
Study Centre**



**Internal Finish of Apex Golf
Course Club House**



Youth Pod Exterior



Model '18' x 4 module - Garage / Office

Key benefits

Highly secure.
Aesthetically pleasing.
Suitable for virtually any purpose.
Adaptable



Model '30' x 10 module - Garage / Workshop

Options available for Apex units

6mm Durbar plate load bearing floor.
Hand tool racks.
Shelving.
Strimmer prongs.
Work bench.
Petrol bins.
Access ramp.
Interior wooden deck floor.
Bench seating.
Consumer units.
Heating & lighting. (gas or electric)
Water heaters.
Soap dispensers.
Full plumbing, sink units, showers, urinals, and hand basins.

Paper hand towel holders.
Electric convactor heaters.
Extractor fans.
Shelving.
Work tops.
Internal wall dividers.
Internal lockers.
Self closing doors.
Opening, sliding or louvered windows.
Fixed or moveable tables.
Carpets.
Bunkbeds.
Veranda.

Or any other fitting you may require.



Model '18' x 6 module - Greenkeeper's building



Model '18' x 3 module - Groundsman's Building



Model '24' x 7 module - Wooden clad



Apex Modular Garage 37/24



Office with Kitchen Facility

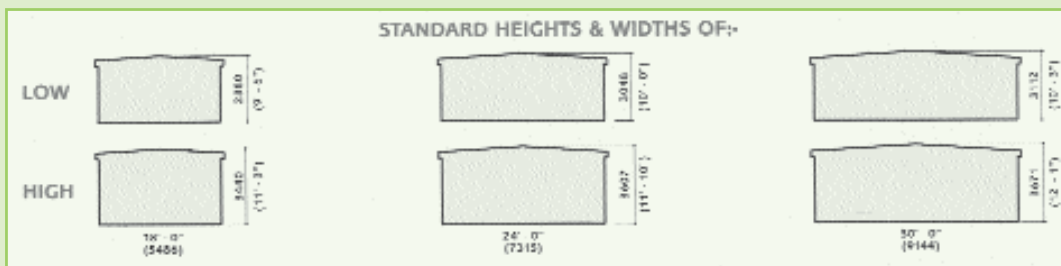
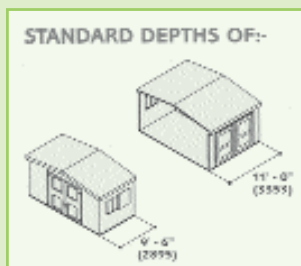
Apex and Apex Modular Buildings



Model '30' x 2 module - Store



Model '18' x 3 module - Wooden clad Workshop / Welfare Unit



All have high and low level vents; top; lifting lugs; single or double outer doors and single or double window shutters.

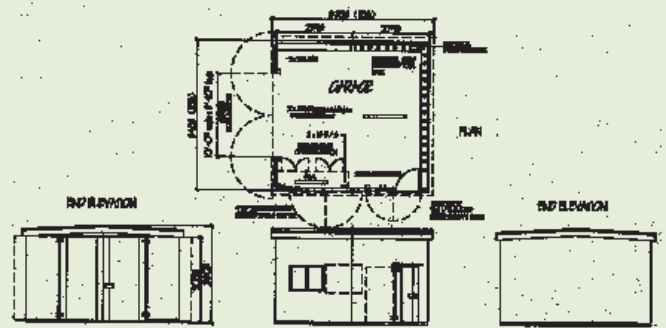
Units are relocatable, designed to your specifications and made to order.

Dimensions can be varied to suit your circumstances.

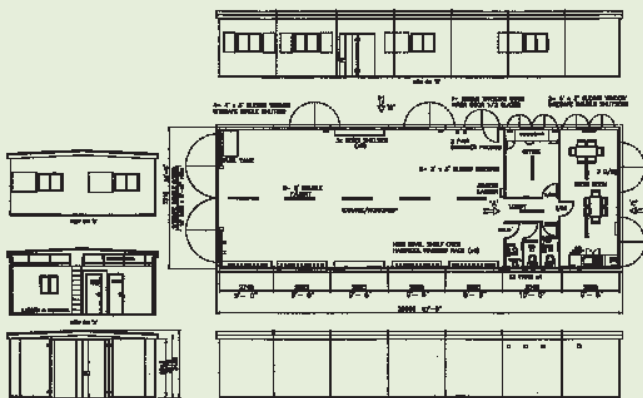
Layout Guide

Sitesafe Apex and Apex Modular buildings.

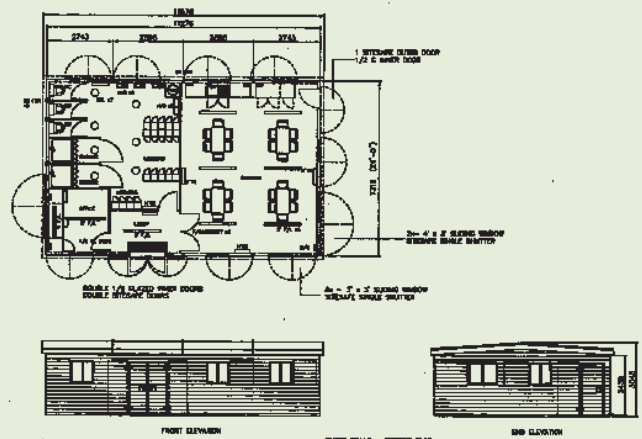
Example layouts which may help you in putting together your own requirements.



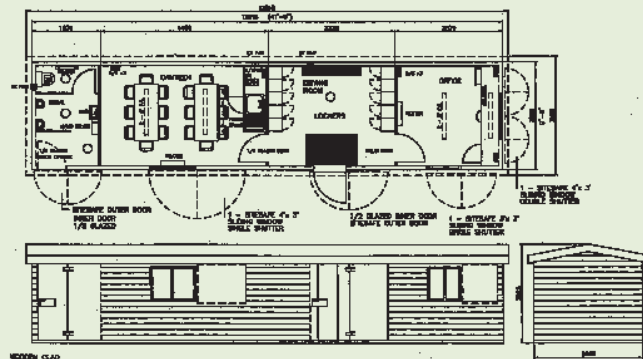
2 Module Garage/Workshop Unit



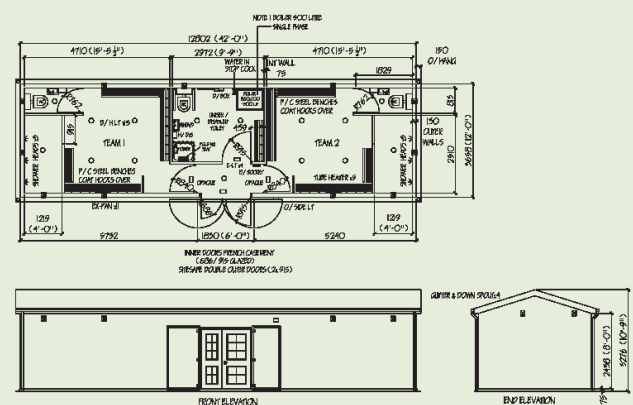
7 Module Garage/Workshop/Accommodation Unit



4 Module Office/Canteen/Changing Facility



Canteen/Office/Drying Room



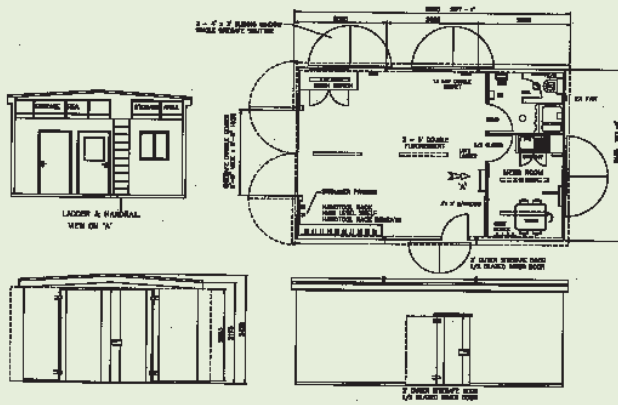
Changing Room Facility

DO NOT SCALE
REMOVE ALL
BURRS AND
SHARP EDGES

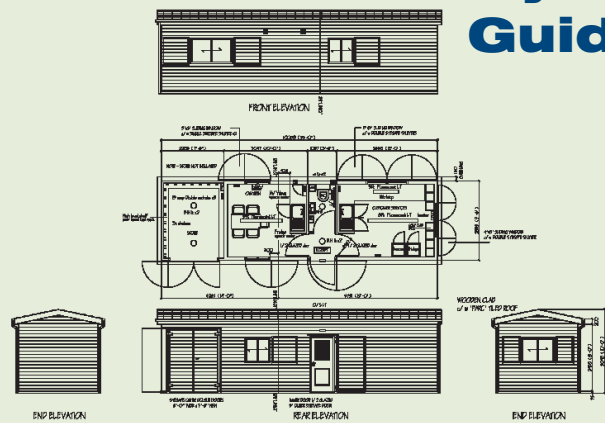
THIRD ANGLE
PROJECTION

REV No	DATE	DETAILS	BY	CUSTOMER
REV 1				
REV 2				
REV 3				
REV 4				

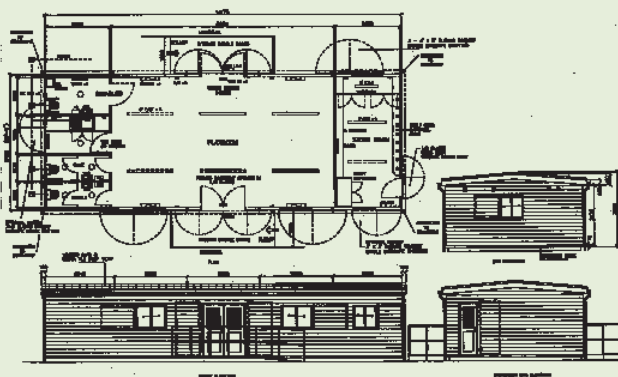
Layout Guide



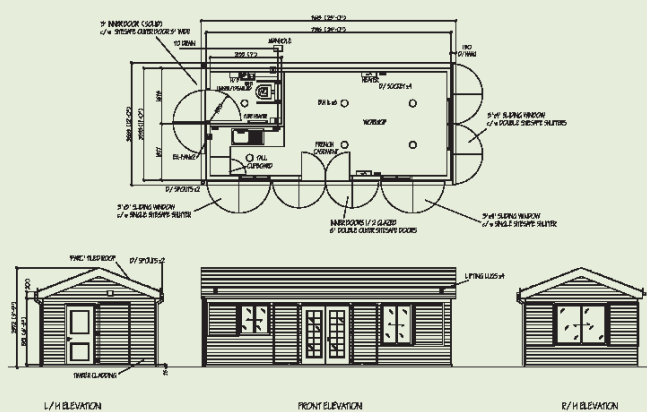
3 Module Workshop/Accommodation Unit



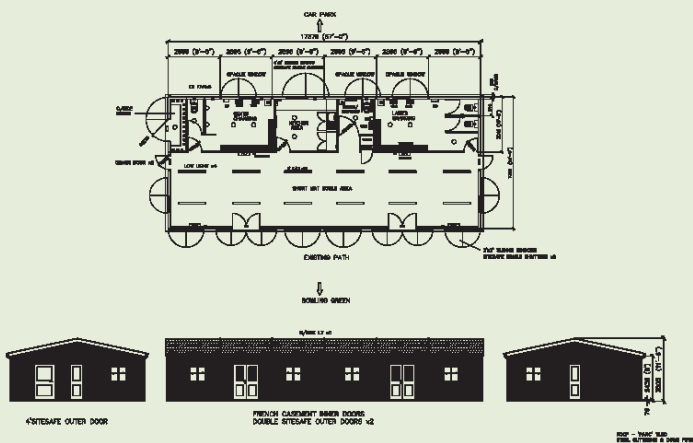
Shop and Ticket Office Pitch and Putt



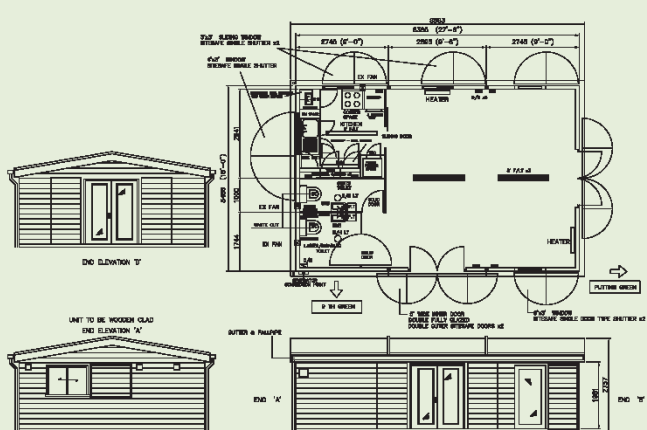
5 Module Playschool/Store Facility



Apex Tennis Pavilion - Wood Clad with Parcile Roof



Apex Modular Bowles Pavilion - Wood Clad with Parcile Roof



Apex Modular Golf Course Club House

**CLEVELAND
SITESAFE
LIMITED**

PARK FARM
DUNSDALE
CLEVELAND
TS14 6RQ
01642 475009

DRAWN

SCALE

DATE

DESCRIPTION

DRG NO

Park & Street Furniture

A selection from our range of vandal resistant, all steel, outdoor furniture. Cleveland Sitesafe Ltd. have been manufacturing highly secure, all steel storage and accommodation units since 1988. We are now using our manufacturing knowledge to produce highly effective vandal resistant street furniture.

Key benefits

- Ease of installation
- Robust designs
- Vandal Resistant
- Pre-drilled
- Anchor Points
- Plastic powder top coat or painted

Field Gate Seat
1830mm x 510mm x 1025mm
6' x 1'8" x 3'4"



Classic Picnic Table
2440mm x 1830mm
8' x 6'



Traditional Modular Curved Seating
1860mm x 510mm x 1025mm
6'1" x 1'8" x 3'4"

Grids and Gates

Constructed to suit your requirements.



Dog Warden Grid (with optional side fencing)

Key benefits

- Ease of installation.
- Gates come as one complete unit.
- Painted and/or Galvanised to your needs.
- Regulates access to chosen points.
- Optional side fences.
- Optional gate padlock shrouds.
- Vandal resistant



Kissing gate

Bridges

Vandal resistant
Easy to install
Ready painted



Windsor Bridge



Windsor Bridge 14m

Recreational Steelwork

Key benefits

Single section unit for ease of installation.

Tanalised timber or Hardwood treads.

Steel channels / Inverted steel channels.

Anti-slip coating.

Span up to 14 metres (46 feet) in length and up to 2.4 metres (8 feet) in width.



Architectural

Sitesafe specialise in designing structures that combine style with the robustness of steel to help withstand constant wear and vandalism

All pavilions, bandstands, gazebos and seating areas can be made as one piece items or when larger structures are needed in a modular form.



Covered seating area

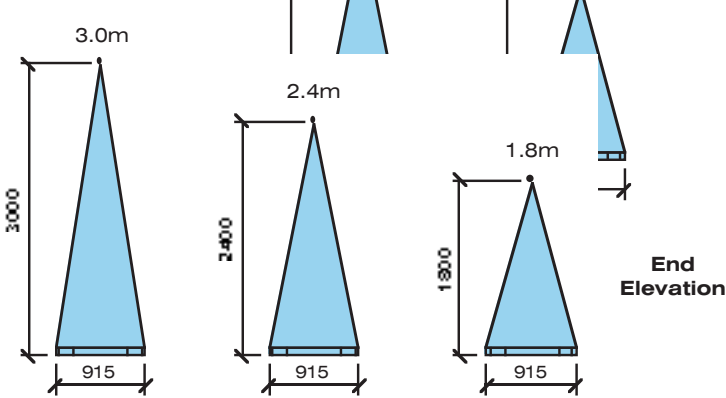


Bandstand

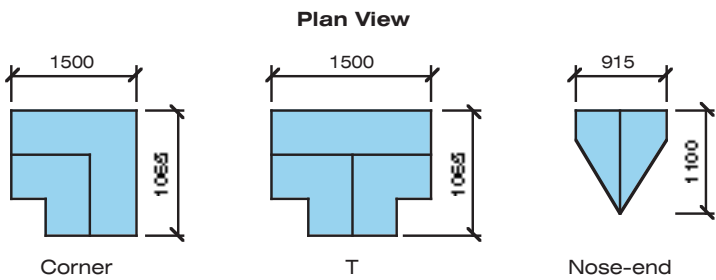
Bunker Walls

The modular and movable, all steel material retaining solution.

Manufactured from fully seam welded 3mm steel plate, the triangular panels are available in standard lengths of 3 metres and in three standard heights.



To complete the layout of the bunker, choose from matching connecting corners, T's and Nose-ends.



1.8m high



3.0m high

Key benefits

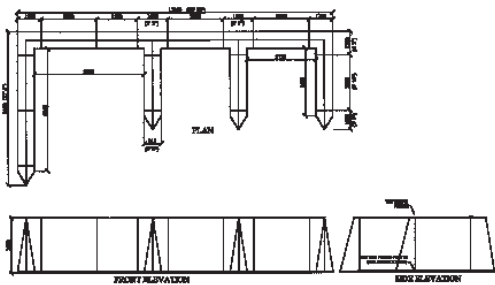
Bunker walls are manufactured from 3mm steel plate.

All are fully seam welded and the base can be filled with concrete, sand or other dry material as ballast.

The walls are fitted with fixing points to bolt the sections together and to the floor and have fill points for ballast.

All wall sections have fork lift points in the ends.

We will gladly quote to make non standard units and supply side wearing plates.



Bikesafe

Really secure protection for your quad or motorbike.

Key benefits

Weatherproof

Robust steel construction

Sitesafe locking mechanism, using 7 Lever Lock

'Anti-jemmy' strips protect Lid and door

Ramped access, making 'Bikesafe' easy to load

Internal sliding storage shelf

Space to store clothing, tools, spare parts etc

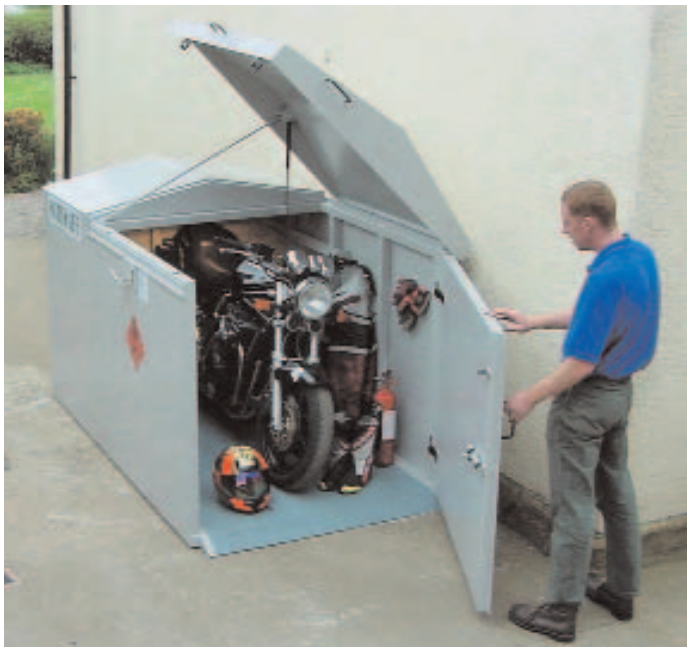
Jacking point for positioning doubles as a chain anchor point

Lift up lid is aided by a gas strut and held in place with a lid stay

Supplied with all relevant warning signs

Internal padlock facility to door

Fixed clothing hooks



The Dimensions:

External (H x W x D)

1525mm x 1320mm x 2250mm

5' x 4'4" x 7'4 1/2"

Internal (H x W x D)

1472mm x 1220mm x 2150mm

4'10" x 4' x 7" 1/2"



We will gladly manufacture a 'Bikesafe' to suit your requirements if the above dimensions are not suitable. A Bikesafe can be painted in any B.S. or RAL colour of your choice.

Interior/Exterior Finishes



Full plumbing service
Polyester overlaid
wall board UPVC
shirting



Wall finish - class 1
plywood painted grey

Full electrical
installation
Wall finish - wood
effect wallboard

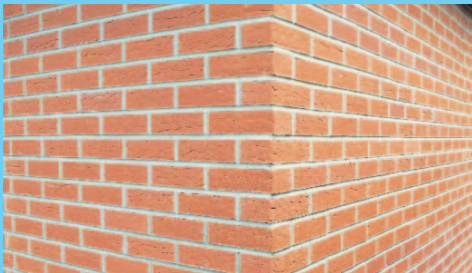


Choice of flooring, wall
finish and services



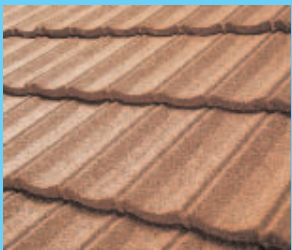
High performance
insulation

Brick Cladding



Steel gutter and down pipe

Cedar Shiplap



Steel Tile



Stone Clad

Profile
steel roof



Wood cladding

Name _____

Address _____

Tel _____

Fax _____

Email _____

Design your own grid

Sitecab, Toolsafe, Link Unit



Name _____

Address _____

Tel _____


Fax _____

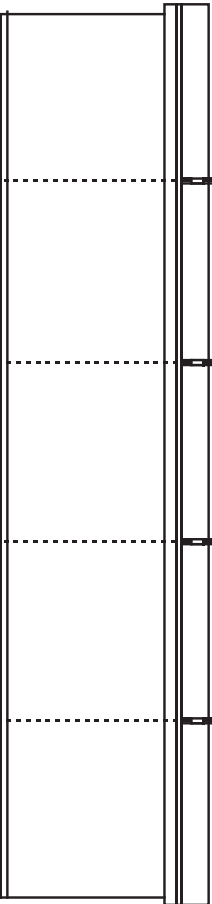
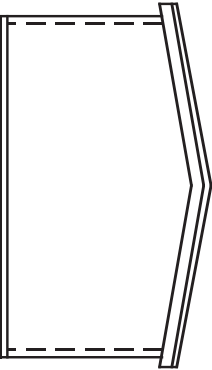
Email _____

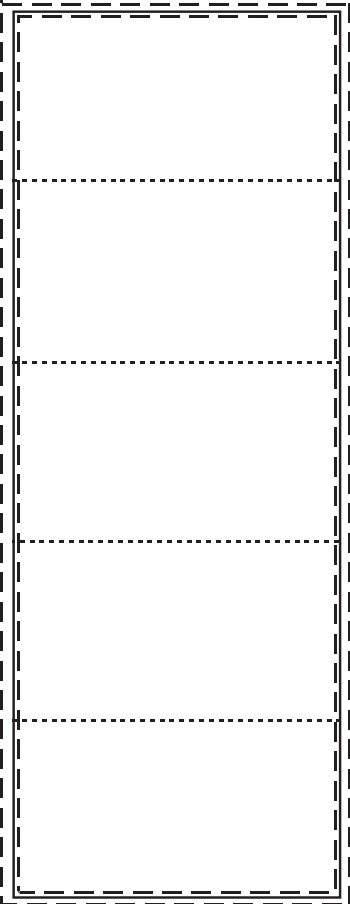
Please note:- Modules are available in standard widths of 5486mm (18), 7315mm (24) and 9144mm (30). BUT other widths can be made to order. They are normally 2895mm (9'6") or 3353mm (11') in depth. Heights vary to suit your requirements.

Design your own grid

Apex & Apex Modular







Sitesafe keyguard system

For your additional security only two unique keys are supplied with your Sitesafe unit. Should you ever need replacements please contact Cleveland Sitesafe in writing stating your unit identification number. We need your written authorisation and your unit identification number before we can proceed.

FLAMMABLES & CHEMICALS UNIVERSAL TRANSIT BOXES BUNDED DECKS
EMPTIES BINS SITECAB TRUCKSAFE FUEL SAFE TOOLSAFE STREET FURNITURE
VANDAL RESISTANT BINS AND SEATS BRIDGES GATES FENCING SAFE SECURITY



To discuss your requirements please contact:

IRVINE WESTON

on Tel: 01427 752058 / Fax: 01427 754337

or

**Cleveland Sitesafe Ltd. Riverside Works
Dockside Road, Middlesbrough TS3 8AT**

Tel: 01642 244663 / Fax: 01642 244664



Email: **sales@cleveland-sitesafe.ltd.uk**

website: **www.cleveland-sitesafe.ltd.uk**

© Cleveland Sitesafe Ltd. 2009. No part of this brochure may be reproduced without the written authorisation of the copyright holder Cleveland Sitesafe Ltd.

The Sitesafe 'Safe' range of product names are trade names of Cleveland Sitesafe Ltd. Our policy of continued product development means that specifications may be varied without prior notification.