

Ship Building

Your applications
→ our systems

Plastic Applications wi



Hot and Cold Fresh Water:
INSTAFLEX® (PB),
AQUASYSTEM (PP-R)



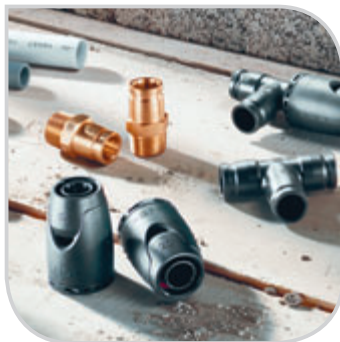
**Refrigeration
below 0°C:**
ABS, PE 100,
COOL-FIT



Grey and Black Water:
FUSEAL Sea Drain (PPFR),
PVC, ABS



Air Conditioning:
ABS, PE 100



Hot and Cold Fresh Water:
iFIT the Tool-less System

th GF Piping Systems



Sea and Fresh Water Cooling:
PE 100, ABS



Ballast Systems: PE 100



Water Treatment
(drinking water, waste water and swimming pools): PVC-C, PVC-U, PP-H, PE, ABS, PB

Approvals. GF Piping Systems has a whole range of approvals from all the major classification societies.

Material system	Classification Society							RMRS
	GL	LR	BV	RINA	ABS	DNV	CCS	
ABS	•	•	•	•	•	•		•
PVC-C	•	•	•	•	•	•	•	•
PVC-U	•	•	•	•		•	•	•
PE 100	•	•	•	•		•	•	•
PP-H		•	•	•		•		
INSTAFLEX® PB	•	•	•	•	•	•	•	•
PP-R Aquasystem	•	•		•	•	•		
iFIT	•	•				•		•
FUSEAL Sea Drain	•	•				•		•



Systems in combination

▶▶ INSTAFLEX PB d 16 to d 225

Pipes in bars or coils
Fitting and valves
Installation accessories

▶ Jointing technology

Compression fittings
Socket fusion fittings
Electrofusion sockets
Butfusion (d 125, d 160, d 225)

▶▶ iFIT – the tool-less push-fit fitting system

d 16-d 32
Innovative modular fitting system with modules and adapters
Polybutene pipes and multi-layer composite pipes (PE-RT-AL-PE)

▶ INSTAFLEX PB and iFIT application ranges

PN 16 hot and cold water
(16 bar at 20 °C)
(10 bar at 70 °C)
(6 bar at 95 °C)
Temperature range 0°–95 °C

▶▶ AQUASYSTEM (PP-R)

d 20–d 110
Socket fusion fittings, electrofusion couplings

▶ AQUASYSTEM application ranges

PN 10 cold water (10 bar at 20 °C)
PN 20 hot water (8 bar at 70 °C)
Temperature range 0–80 °C

www.iFIT.georgfischer.com



Easy installation technology. Our electrofusion fittings permit fast, efficient and economical installation of the systems. In combination with the iFIT push-fit system, the cabins are easily connected from the main pipe to the toilets, showers and sinks. And entirely without fusion, soldering, flames, smoke or compression noise. With INSTAFLEX PB, AQUASYSTEM and iFIT your installations are safe and reliable.

Hot and cold water distribution

INSTAFLEX PB, iFIT, AQUASYSTEM (PP-R)



Hot and cold water distribution.

Our INSTAFLEX PB and AQUASYSTEM (PP-R) systems in combination with iFIT are ideally suited for drinking water distribution on all types of ships. Cabins, kitchens, restaurants and bars are optimally supplied with fresh water. The high flexibility of the PB material and the easy installation technology cut time and costs to a minimum.

Pre-fabrication warrants shorter building time.

With INSTAFLEX PB it is possible to pre-fabricate pipelines in coils, up to 70 m including all the outlets. Flexibility branch positioning with welding saddle of AQUASYSTEM (PP-R). These are then installed in the decks and connected to the cabins with the iFIT system. Our hot and cold water distribution solutions are system-related and therefore ideal for new buildings, renovation projects and the repair of conventional systems. The high quality plastics PB, PP-R and PPSU are guaranteed corrosion-free and have a very long service life.



▶▶ **Systems for water treatment**

- PVC-U d 12–d 225
- PVC-C d 16–d 225
- PP-H d 16–d 400
- PE d 20–d 400
- ABS d 16–d 315

- ▶ Pipes, fittings, measurement and control instruments, valves and installation tools

▶▶ **System features**

- PVC-U 0–60 °C
- PVC-C 0–80 °C
- PP-H 0–80 °C
- PE 100 -40 °C to +60 °C
- ABS -40 °C to +60 °C
- PN 10

▶▶ **Media**

- Seawater
- Fresh water
- Osmosis water
- Deionized water



High economic efficiency and long service life. PVC-U and PVC-C piping systems have become the worldwide leading industrial systems for water treatment thanks to their special features. GF Piping Systems has been producing these plastic piping systems since 1957. Whether for treatment of drinking water or swimming pool water – with plastic systems from

GF Piping Systems you know you have a recognized and time-tested solution for Ship Building.

Compact solutions from GF Piping Systems. To enable compact constructions, we have developed special components. And with our modular automation and SIGNET measurement and control technology you are assured flexible

Water treatment systems

for drinking water, seawater, waste water, swimming pools and whirlpools with PVC-U, PVC-C, PP-H, PE and ABS systems



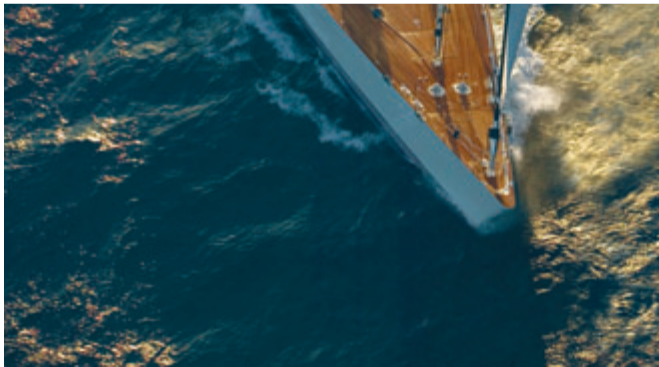
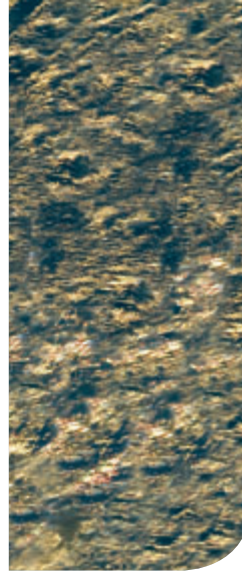
and efficient measurement and control.

The water treatment systems can be pre-fitted by the manufacturer and subsequently installed on the ships as compact units. Modules, pre-assembled with measurement and control technology, are built directly into the piping systems. Water treatment systems for a variety of applications on ships are

generated from these individual modules. Whether for drinking water, swimming pools, whirlpools or for waste water treatment, GF Piping Systems has the solution.

Measurement and control technology. We offer complete solutions in plastic for water treatment and distribution, including automated

valves (pneumatic and electric actuators). SIGNET systems for flow measurement, for pH value measurement, for pressure and temperature measurement and for conductivity measurement are also included in our scope of performance.



▶▶ **System features FUSEAL R Sea Drain**

Material PPFR (PP Flame Retardant)
d 1½" to 6"
PN 1.76 (with safety factor 4)
Vaccum 10 Inches relativ = (-0,34 bar)
Temperature 80 °C constant load, 95 °C short-term load
Drainage system with high corrosion resistance, even for chemically contaminated waste water

▶▶ **ABS**

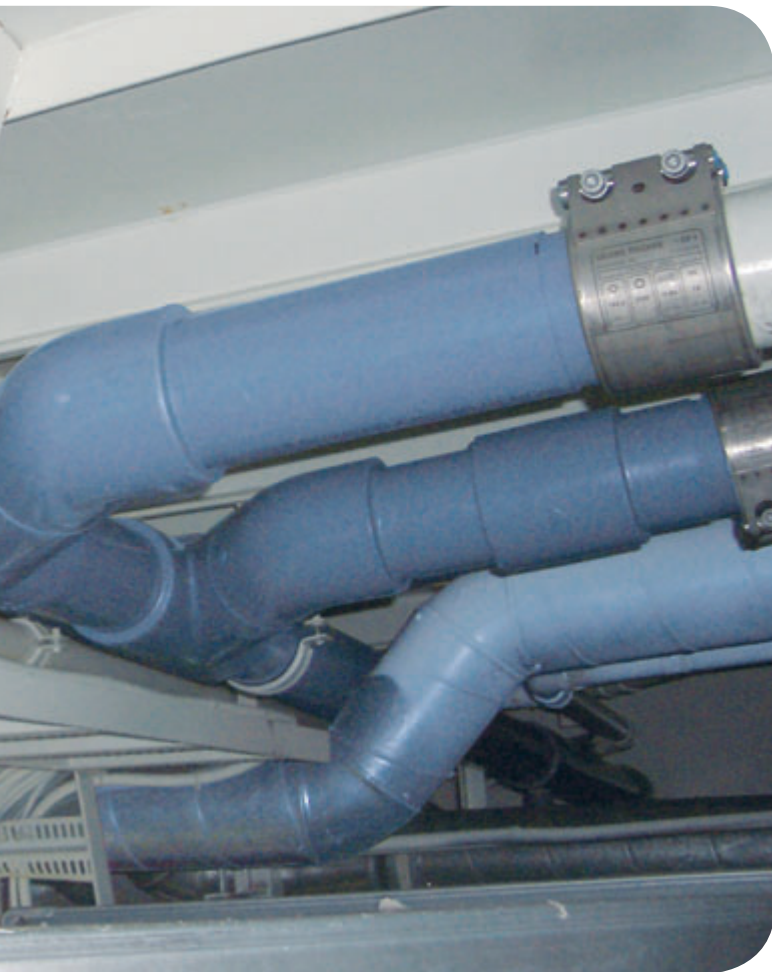
Material ABS (Acrylonitrile butadiene styrene)
d 16–d315
PN 10 (10 bar at 20 °C)
-40 °C to +60 °C
Pipes and fittings
Special components also possible
Especially useful for repairs



Waste water pipes for aggressive effluents.
Appropriate pipes for conducting water from toilets, showers and the kitchens are essential for the safe operation of cruise ships.

Grey and black water

FUSEAL Sea Drain, ABS



Pre-fabricated solutions for grey and black water applications. Grey and black water systems from GF Piping Systems are a major contributing factor to safety in the cabins. The all-plastic, durable systems complement our drinking water systems ideally. Our modern electrofusion technology or adhesive jointing technology is conducive to fast installation and the highly diversified product mix provides installers with the flexibility they require. For custom-made solutions we offer our pre-fabrication service.

Our FUSEAL Sea Drain and ABS systems. With these systems you have a choice of excellent solutions for grey and black water conveyance. FUSEAL Sea Drain – the fire retardant drainage system – is extremely resistant to corrosion and uses the electrofusion jointing method. Adapter unions for the transition from plastic to metal enable a fast connection in case of repairs and renovation of existing systems.



▶ **Complete systems**

ABS: d 16 – d 315
PE 100: d 20 – d 400

▶ Pipes, fittings, valves, measurement and control devices

▶ Parameters
PN 10 (10 bar at 20°C)
Working temperature
ABS: -40°C to +60°C
PE 100: -40°C to +40°C

▶ Media
Water
Ice water
Ice slurries
Saline solutions (organic)
Glycol-water mixture
Alcohol-water mixture

▶ Not suitable for refrigerants:
R 22, R 407, etc.
ammonia
CO₂

www.cool-fit.georgfischer.com



COOL-FIT reduces your installation time, energy loss and service costs.

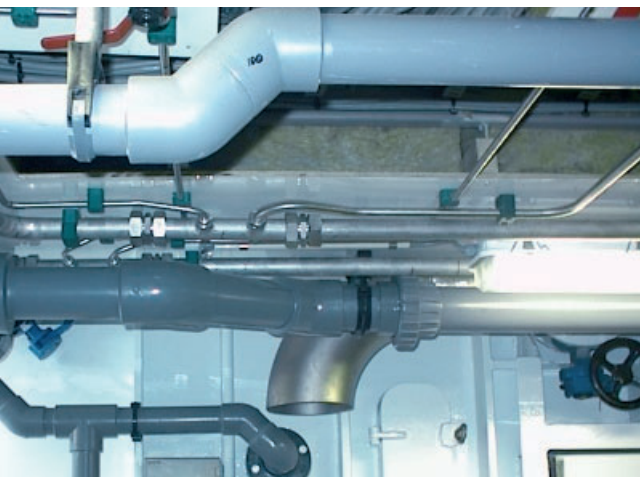


A variety of cooling methods. ABS with or without Armaflex NH is the perfect solution for fresh or seawater cooling, for instance in fish processing plants. In standard practice, cold water distribution networks are susceptible to corrosion – both from the inside as well as from the outside. ABS is a corrosion and incrustation-free material that is also free of halogens. Noted for its applications at ex-

tremely low temperatures, -40°C to +60°C, this material is particularly suited for these distribution systems. No fusion or soldering required. The time-tested cementing technique renders the system easy and safe to operate. Due to the low weight of the plastic, it is also fast and effortless to install.

Sea and fresh water cooling Refrigeration below 0 °C

ABS and PE 100



Fresh water bunker lines



COOL-FIT – the pre-insulated plastic system.

An ideal system for secondary cooling and air-conditioning applications. Here, ABS, which is used to carry the medium, is insulated with PUR foam and encased with a PE pipe. Thanks to the new COOL-FIT nipple, pre-insulated pipes and fittings are cemented quickly. This inner cementing has the decisive advantage that no insulation needs to be removed. In other words, COOL-FIT reduces your installation time, energy loss and service costs.

Fresh water bunker lines in PE. PE 100 is an excellent choice of material for bunker lines. PE100 joined with electrofusion sockets (ELGEF Plus), especially in the large dimensions d110 to d315, has been used successfully on a number of cruise ships. The electrofusion sockets are the ideal solution here in combination with butt fusion. Fresh water in varying qualities negatively affects the product life of metal pipes, but not of plastic pipes. The low weight, high resistance and easy handling are further advantages of PE 100.

GF Piping Systems → worldwide



Our sales companies and representatives on location provide you with support in over 100 countries.

For more information on Ship Building:
www.piping.georgfischer.com → Solutions → Ship Building

The technical data is not binding and not an expressly warranted characteristic of the goods. It is subject to change. Please consult our General Conditions of Supply.

Australia

George Fischer Pty Ltd
 Kingsgrove NSW 2008
 Phone +61(0)2/95 54 39 77
sales@georgfischer.com.au
www.georgfischer.com.au

Austria

George Fischer
 Rohrleitungssysteme GmbH
 3130 Herzogenburg
 Phone +43(0)2782/856 43-0
office@georgfischer.at
www.georgfischer.at

Belgium/Luxembourg

George Fischer NV/SA
 1070 Bruxelles/Brüssel
 Phone +32(0)2/556 40 20
info.be@be.piping.georgfischer.com
www.georgfischer.be

Brazil

George Fischer Ltda
 04795-100 São Paulo
 Phone +55(0)11/5687 1311
infoship@us.piping.georgfischer.com

China

Georg Fischer Piping Systems Ltd Shanghai
 Pudong, Shanghai 201319
 Phone +86(0)21/58 13 33 33
info@cn.piping.georgfischer.com
www.cn.piping.georgfischer.com

Denmark/Iceland

George Fischer A/S
 2630 Taastrup
 Phone +45 (0)70 22 19 75
info@dk.piping.georgfischer.com
www.georgfischer.dk

France

George Fischer S.A.S.
 93208 Saint-Denis Cedex 1
 Phone +33(0)1/492 21 34 1
info@georgfischer.fr
www.georgfischer.fr

Germany

Georg Fischer GmbH
 73095 Albershausen
 Phone +49(0)7161/302-0
info@georgfischer.de
www.vgd.georgfischer.de

Georg Fischer DEKA GmbH
 35232 Dautphetal-Mornshausen
 Phone +49(0)6468/915-0
info@dekapipe.de
www.dekapipe.de

Greece

Georg Fischer S.p.A.
 10434 Athens
 Phone +30(0)1/882 04 91
office@piping-georgfischer.gr

India

George Fischer Piping Systems Ltd
 400 093 Mumbai
 Phone +91(0)22/2820 2362
branchoffice@georgfischer.net

Italy

Georg Fischer S.p.A.
 20063 Cernusco S/N (MI)
 Phone +3902/921 861
office@piping.georgfischer.it
www.georgfischer.it

Japan

Georg Fischer Ltd
 556-0011 Osaka
 Phone +81(0)6/6635 2691
info@georgfischer.jp
www.georgfischer.jp

Malaysia

Georg Fischer (M) Sdn. Bhd.
 47500 Subang Jaya
 Phone +60 (0)3-8024 7879
conne.kong@georgfischer.com.my

Netherlands

Georg Fischer N.V.
 8161 PA Epe
 Phone +31(0)578/678 222
info.vgnl@nl.piping.georgfischer.com
www.georgfischer.nl

Norway

Georg Fischer AS
 1351 Rud
 Phone +47(0)67 18 29 00
info@no.piping.georgfischer.com
www.georgfischer.no

Poland

Georg Fischer Sp. z o.o.
 02-226 Warszawa
 Phone +48(0)22/313 10 50
www.georgfischer.pl

Romania

Georg Fischer
 Rohrleitungssysteme AG
 70000 Bucharest - Sector 1
 Phone +40(0)1/222 91 36
office@georgfischer.ro

Singapore

George Fischer Pte Ltd
 417 845 Singapore
 Phone +65(0)67 47 06 11
info@georgfischer.com.sg
www.georgfischer.com.sg

Spain/Portugal

Georg Fischer S.A.
 28046 Madrid
 Phone +34(0)91/781 98 90
info@georgfischer.es
www.georgfischer.es

Sweden/Finland

Georg Fischer AB
 12523 Älvsjö-Stockholm
 Phone +46(0)8/506 775 00
info@georgfischer.se
www.georgfischer.se

Switzerland

Georg Fischer Rohrleitungssysteme [Schweiz] AG
 8201 Schaffhausen
 Phone +41(0)52 631 30 26
info@rohrleitungssysteme.georgfischer.ch
www.piping.georgfischer.ch

United Kingdom/Ireland

Georg Fischer Sales Limited
 Coventry, CV2 2ST
 Phone +44(0)2476 535 535
info@georgfischer.co.uk
www.georgfischer.co.uk

USA/Canada

George Fischer Inc.
 Tustin, CA 92780-7258
 Phone +1(714) 731 88 00, Toll Free 800/854 40 90
infoship@us.piping.georgfischer.com
www.us.piping.georgfischer.com

Miami/Latin America/Caribbean

George Fischer Inc.
 Miami, FL 33172
 Phone +1(305) 477-5700
gf.ship@dama.com
www.us.piping.georgfischer.com

Export

Georg Fischer Rohrleitungssysteme [Schweiz] AG
 8201 Schaffhausen
 Phone +41(0)52 631 11 11
export@piping.georgfischer.com
www.piping.georgfischer.com