

Furniture Linoleum

DESK TOP[®]

ARTOLEUM[®]

MARMOLEUM[®]

The background features a dark blue area on the left, a large light yellow curved shape in the center, and a white area on the right. Thin, curved lines in yellow and green are scattered across the top and right sections.

Furniture Lin

In furniture design, the choice of material is of paramount importance when it comes to the appreciation and success of the product. The Furniture Linoleum collection from Forbo Linoleum consists of the brand names Desk Top, Marmoleum and Artoleum. Each of these products makes using linoleum as a surfacing material an exciting alternative.


The warm, tactile properties of Furniture Linoleum are an invitation to touch. Because of the matt surface of the protective finish, the colours retain their strength and any irritating reflection of light is limited.

oleum: a rewarding alternative

Furniture Linoleum is manufactured of renewable raw materials from growing trees and plants, that is, linseed oil, rosin, wood flour and pigments. As a consequence it is biologically degradable, not harming the environment after its long life. As long as the sun keeps shining and the rain keeps falling, nature can continue to provide the ingredients for Furniture Linoleum.

5





Furniture Linoleum can be used for a multitude of applications. Desk Top, Artoleum and Marmoleum can be applied not only horizontally and vertically, but also to curved surfaces. Furniture Linoleum can be installed easily on the usual materials such as MDF, chipboard and plywood.

Endless combinations

The Desk Top collection offers a wide range of well-balanced designs allowing a multitude of applications. Desk Top eleganza is a collection of elegant plain colours which will give any piece of furniture a distinguished appearance. Desk Top metallica's exceptional structure enables designers to experiment with tone and reflection of light. The sandy texture of Desk Top sabbiato gives added tactility and a natural feel.

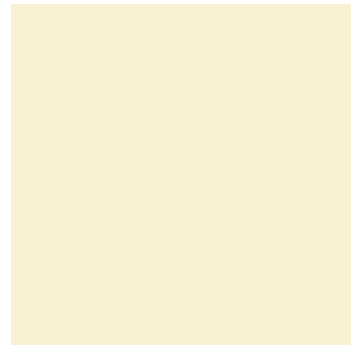
for the perfect finish

The Artoleum and Marmoleum designs included in the collection represent just a small selection from the extensive collections of these products. Especially for surfaces subjected to intensive use, such as counter areas and kick backs, Artoleum and Marmoleum provide a durable alternative to other materials. Co-ordination possibilities with flooring are also afforded with these materials.

Contemporary yet classic

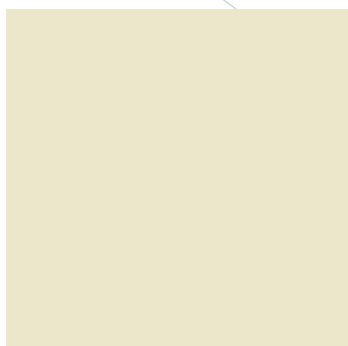
Desk Top eleganza consists of 16 distinguished unicolours. Each colour conforms to current trends in spatial design. By using Desk Top eleganza, furniture is given its very own, timeless architectonic ambience.

The designs combine well with other materials such as aluminium, stainless steel or wood.

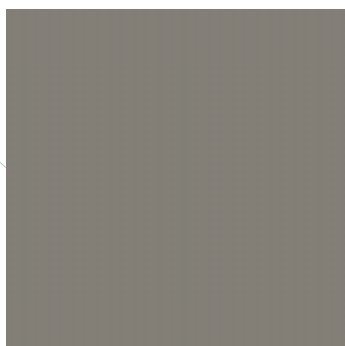


DESK TOP® eleganza

4157



4151



4155



4132

4150



4158



4162



4140

4159



4160

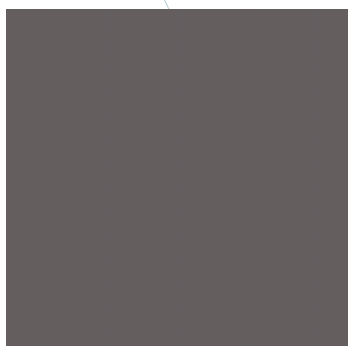


4163



4146

4154



4161



4164



4023

Desk Top metallica fits in well with the growing application of metallic structures in furniture designs. The reflective quality of Desk Top metallica guarantees harmony with the surrounding colours.

The warm colours can be combined well with other metallic materials as well as with, for instance, wood. The unique structure gives the material its very own character without interfering with the special characteristics of linoleum.

A subtle play on light

DESK TOP[®] metallica



M4140



M4155



M4154



M4023





DESK TOP® sabbiato



S4151



S4150



S4132



S4023

Natural character

The surface structure of Desk Top sabbiato has a fine relief. The textured effect, resulting from the play of light and shadow, gives objects a tactile and natural character. The palette of grey tones can therefore be applied very well not only vertically and horizontally, but also to curved surfaces. As the designs correspond with the Eleganza designs, well-balanced textural combinations can be created.

From an aesthetic or practical point of view a structured design may be preferred. Marmoleum and Artoleum offer perfect opportunities in this respect. The neutral designs illustrated here combine very well with the Desk Top collection.

Highlight or harmonise

However, the large number of designs in the complete collection also offer an extensive range of application possibilities. In addition, the dirt and scratch concealing structure can offer a natural helping hand for surfaces subjected to a great deal of heavy traffic from, for instance, money or goods.

ARTOLEUM®



5077

MARMOLEUM®



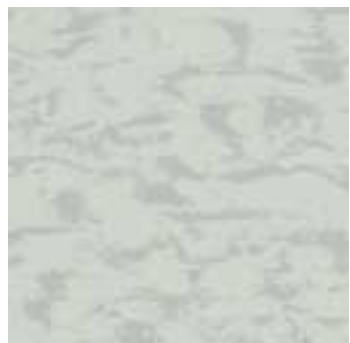
3859



3860



3135



5078



3863



3866



2939



Perfect

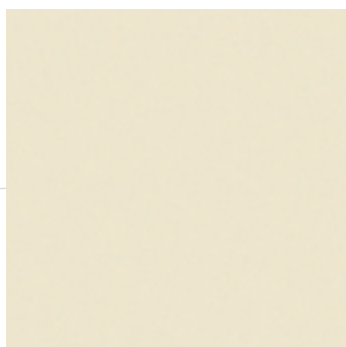


A very important aspect of designing furniture is the finishing of edges. Furniture Linoleum can be finished in different ways in combination with a multitude of other materials.

in every detail



During the last phase of the production process a yellowish film, the so-called drying room yellowing, may appear on the finished material. This phenomenon is more visible on the lighter shades but, when exposed to light, it disappears quickly. The picture shows the drying room yellowing and how the linoleum regains its original colour once exposed to light.



DESK TOP®

ARTOLEUM® MARMOLEUM®



Thickness 2.0 mm, ± 0.15, in accordance with EN 428



Under certain conditions, panels can be cut to size



Length of roll circa 30 m, width of roll 1.83 m, in accordance with EN 426



Weight per m²: 2.1 kg/m², ± 10%, in accordance with EN 430



Colour fastness: minimum blue scale 6 in accordance with NEN-ISO 105-B02, method 3



Gloss < 5, in accordance with ISO 2813 (60°)



Residual indentation maximum 0.20 mm in accordance with Fed. Spec. LLL 354C 71 lbs / Ø 4.52 mm



Flexibility: Ø 50 mm in accordance with EN 435, method A



Inflammability: difficult to ignite, class B2 in accordance with DIN 4102-01



Heat resistance: < 70° C



Chemical resistance in accordance with EN 423:

- Resistant to diluted acids, oils and the most conventional solvents such as alcohol, white spirit, etc.
- Not resistant to prolonged exposure to alkalis



Bacteriostatic properties: Forbo linoleum has bacteriostatic properties, which are confirmed by famous laboratories such as TNO (The Netherlands) and NAMSA (USA)

Thickness 2.0 and 2.5 mm, ± 0.15, in accordance with EN 428

Under certain conditions, panels can be cut to size

Length of roll circa 30 m, width of roll 2.00 m, in accordance with EN 426

Weight per m²: 2.3 and 2.9 kg/m², ± 10%, in accordance with EN 430

Colour fastness: minimum blue scale 6 in accordance with NEN-ISO 105-B02, method 3

Gloss < 12, in accordance with ISO 2813 (60°)

Residual indentation maximum 0.20 mm in accordance with Fed. Spec. LLL 354C 71 lbs / Ø 4.52 mm

Flexibility: Ø 40 mm in accordance with EN 435, method A

Inflammability: difficult to ignite, class B2 in accordance with DIN 4102-01

Heat resistance: < 70° C

Chemical resistance in accordance with EN 423:

- Resistant to diluted acids, oils and the most conventional solvents such as alcohol, white spirit, etc.
- Not resistant to prolonged exposure to alkalis

Bacteriostatic properties: Forbo linoleum has bacteriostatic properties, which are confirmed by famous laboratories such as TNO (The Netherlands) and NAMSA (USA)



Forbo Linoleum B.V.
 P.O. Box 13
 1560 AA Krommenie
 The Netherlands
 Tel. +31 75 647 74 77
 Fax +31 75 621 54 66
 info@forbo-linoleum.nl
 www.forbo-linoleum.com



world leader in linoleum