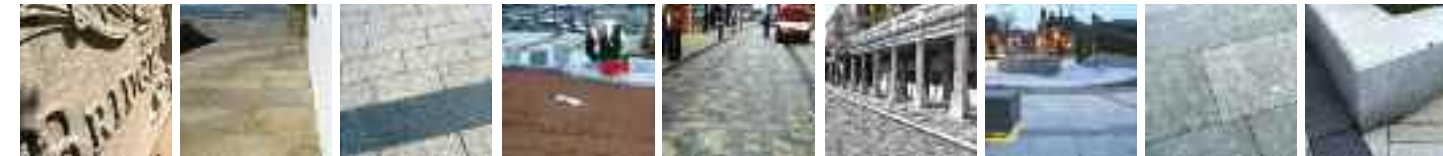




**Materials used:**  
Kobra and Crystal  
Black flamed and  
bush hammered  
setts and slabs.

Spinningfields, Manchester



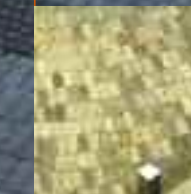
**Head Office**  
Ashworth House  
Deakins Business Park  
Egerton  
Bolton  
BL7 9RP  
T 01204 590666  
F 01204 590620  
E enq@hardscape.co.uk

**Southern Office**  
Unit 25  
Long Marston Industrial Estate  
Long Marston  
Stratford Upon Avon  
CV37 8QR  
T 01789 721012  
F 01789 721041  
E enq@hardscape.co.uk

www.hardscape.co.uk

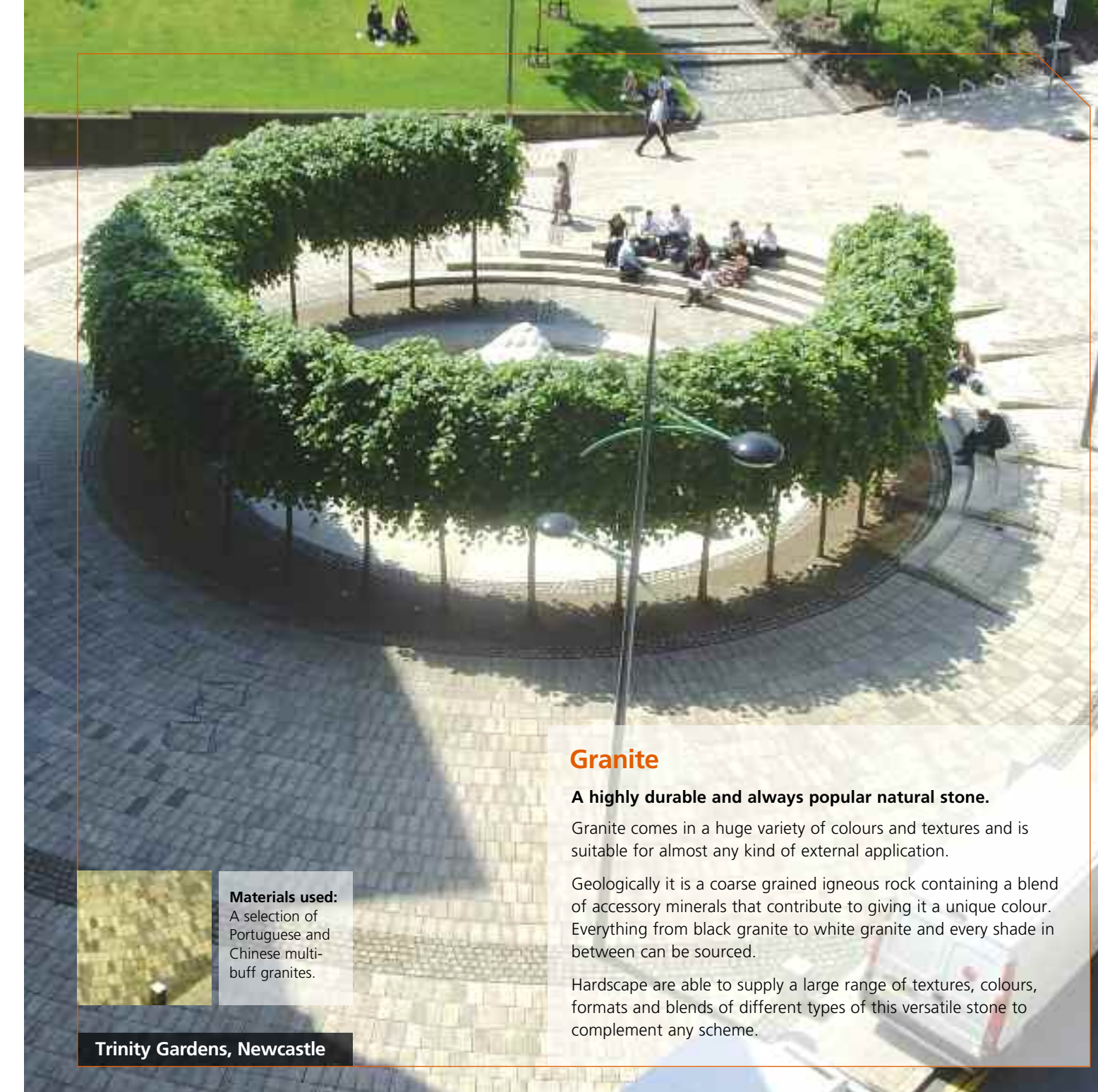


**Granite**



**Materials used:**  
A selection of  
Portuguese and  
Chinese multi-  
buff granites.

Trinity Gardens, Newcastle



**Granite**

**A highly durable and always popular natural stone.**

Granite comes in a huge variety of colours and textures and is suitable for almost any kind of external application.





Geologically it is a coarse grained igneous rock containing a blend of accessory minerals that contribute to giving it a unique colour. Everything from black granite to white granite and every shade in between can be sourced.

Hardscape are able to supply a large range of textures, colours, formats and blends of different types of this versatile stone to complement any scheme.



**Materials used:**  
Magma granite  
flamed slabs  
and setts.

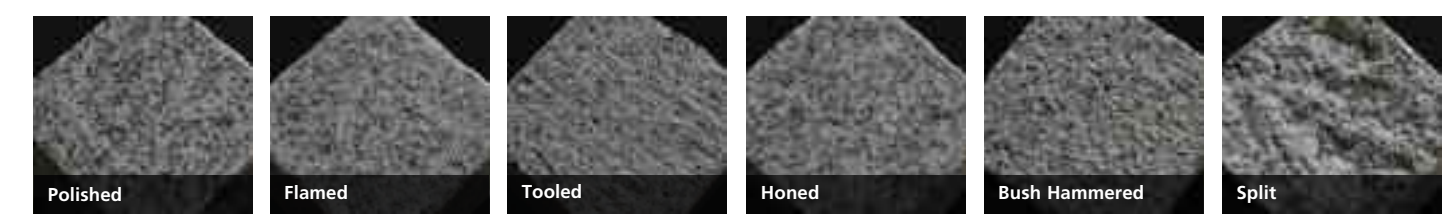
Hope University, Liverpool

 Amarelo Real (EU)	 Branco Micaela (EU)	 Campo Maior (EU)	 Cinza Penalva (EU)	 Pedras Salgadas (EU)	 SPI (EU)	 Tregal (EU)	 Cloudy White Bush-hammered	 Cloudy White Flamed	 Cloudy White Polished	 Eaglet Red Bush-hammered	 Eaglet Red Flamed	 Eaglet Red Polished
 Alentejo Black (EU)	 Roriz (EU)	 Bohus Grey (EU)	 Alpendorada Grey (EU)	 Vanga (EU)	 Pink Monforte (EU)	 Pink Porrinho (EU)	 Yellow Rock Bush-hammered	 Yellow Rock Flamed	 Yellow Rock Polished	 Shiraz Bush-hammered	 Shiraz Flamed	 Shiraz Polished
 Pental Pink Bush-hammered	 Pental Pink Flamed	 Pink Pearl Bush-hammered	 Pink Pearl Flamed	 Pink Pearl Polished	 Portington Black Bush-hammered	 Portington Black Flamed	 Portington Black Polished	 Bank Black Flamed	 Pacific Black Flamed	 Purple Red Bush-hammered	 Purple Red Flamed	 Purple Red Polished
 Midnight Black Bush-hammered	 Midnight Black Flamed	 Midnight Black Polished	 Crystal Black Flamed	 Crystal Black Polished	 Mist Bush-hammered	 Mist Flamed	 Mist Polished	 Orient Grey Bush-hammered	 Orient Grey Flamed	 Orient Grey Polished	 Classic Bush-hammered	 Classic Flamed
 Kobra Bush-hammered	 Kobra Flamed	 Kobra Green Bush-hammered	 Kobra Green Flamed	 Kobra Green Polished	 Kobra Polished	 Royal Green Bush-hammered	 Royal Green Flamed	 Royal Green Polished	 Royal White Bush-hammered	 Royal White Flamed	 Royal White Polished	 Rustenburg Bush-hammered
 Rustenburg Flamed	 Rustenburg Polished	 Stardust Polished	 Stardust Flamed	 Terra Red Bush-hammered	 Terra Red Flamed	 Terra Red Polished	 Violet Pearl Bush-hammered	 Violet Pearl Flamed	 Violet Pearl Polished	 ZL Green Bush-hammered	 ZL Green Flamed	 ZL Green Polished

DISCLAIMER: Due to variations in the printing process this colour swatch represents an approximate guide to Hardscape colour-types of granite within this selective range. Please request individual samples to appreciate and confirm colour selection.



**Finishes**



Granites depicted are for demonstration purposes only. Colours and types of granite may differ slightly when 'finishes' applied. Test data available upon request.

**Specials**



**Types**

**Slabs**

Slabs with a natural surface and sawn edges are often used for the paving and facing of both internal and external areas. They are the main paving item for squares, streets, pavements, arcades and shopping centres.  
Sizes: Standard and bespoke available on request.

**Setts**

They provide texture in the streetscape. Being an extremely versatile product, the sett is used either to contain or mark the edge of paved areas, squares, streets or to shape flower-beds, traffic islands and soft landscaping. They can also be used decoratively to embroider paved areas.  
Sizes: Standard and bespoke available on request.

**Kerbs**

Usually paved vertically, kerbstones can be used for shaping footpaths, flower-beds, stairs or for marking edges of traffic and pedestrian paved areas.