

CI/SfB	(71.3)	X	



**ALISPAR™**

**MAGMA**

# ALISPAR™

**ALISPAR™** Nosings and Treads are designed to take heavy foot traffic and are suitable for use on external stairs where a high degree of slip resistance is required, even in wet conditions.

They are manufactured to order from a range of standard profiles that allows the system to be used on any size or width of tread, and can be fitted onto concrete, steel or wooden surfaces.

The aluminium extrusions are in 6063 alloy tempered to T6 hardness and conform to B.S. 1474. The carborundum inserts are available in a range of colours, and the aluminium riser of the nosings sections (MOD 1 and MOD 2) can be powder coated yellow as an optional extra.

Typical applications are Railway Station Footbridges and Subways, Hospitals, Schools and High Rise Housing blocks.

## Technical Specification

- ◆ DDA compliant with 55mm tonal variation strip.
- ◆ High tensile aluminium extruded to B.S. 1474 in 6063 T6.
- ◆ Front rows of abrasive available in yellow to highlight step edge.
- ◆ 6mm radius to front edge complies with section 2.2.7 of the Code of Practice for Disabled Passengers issued by the Office of the Rail Regulator.
- ◆ Colours: Black, Red, Blue, Green, Yellow, Brown.
- ◆ Typical applications: Railway Stations, Hospitals, Schools, Subways – any heavily trafficked external staircase.



Before . . .



## Fixing Recommendations

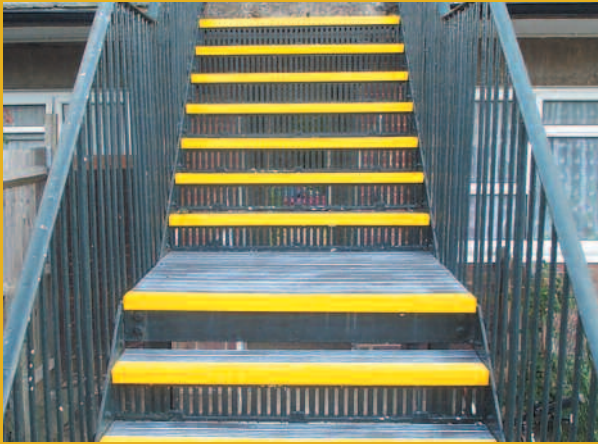
For fixing onto stone or concrete stairs, ensure that surface is sound and level. Make good any worn or broken areas with rapid cement or epoxy repair mortar.

Position Alispar on step. Spot through to mark with a 4mm dia masonry drill. Lift off Alispar and drill 6mm dia. hole where indicated to take a red plug. Apply a layer of bedding compound (e.g. exterior grade tile adhesive) to step and re-lay Alispar. Screw down with 4mm dia stainless steel countersunk screws.

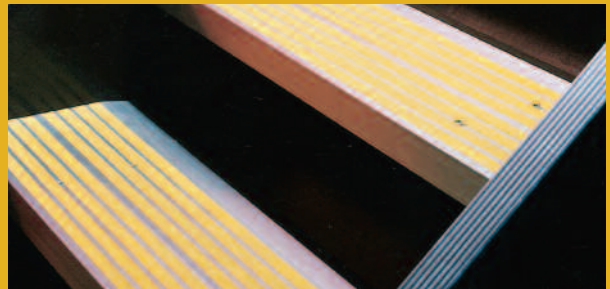
For steel stairs position Alispar on step, spot through with 4mm HSS drill bit. Lift Alispar off and drill steel through with 5mm HSS bit. Apply layer of insulation membrane (e.g. Bituthene). Use countersunk machine screws, nyloc nuts and washers to fix.

For timber stairs ensure surface is flat and level. Use 4mm woodscrews.

Successfully installed in a wide variety of applications...



... After



### MagmaStrip and MagmaDisc

Carborundum inserts for pre-cast concrete and wooden stairs available in strips and discs of various sizes, and available in a range of colours. Suitable for bonding into in-situ units with gap filling or epoxy adhesive.

MagmaStrip standard sizes



35mm x 8mm

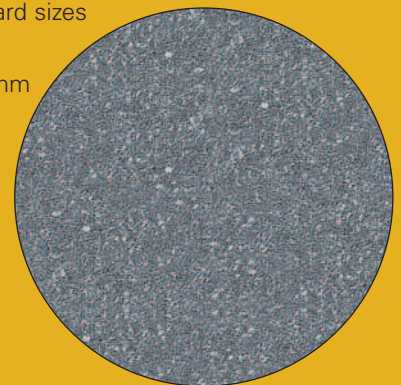
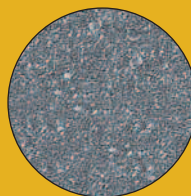


25mm x 8mm

MagmaDisc standard sizes

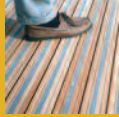
50mm x 8mm

25mm x 8mm





Also available from MAGMA:



**DECKSAFE®**  
Anti-skid timbers



**MAGMA SAFETY PANELS™**  
Anti-skid panels



**MAGMATAC®**  
Corduroy and Blister Tactiles



MAGMA Safety Products Ltd  
Unit 1, Sawston Park,  
London Road,  
Pampisford,  
Cambridge CB22 3EE

**Tel:** +44 (0)1223 836643  
**Fax:** +44 (0)1223 834648  
**Email:** [info@magmasafety.co.uk](mailto:info@magmasafety.co.uk)

ALISPAR™ is a trademark of MAGMA Safety Products Ltd.

Due to our policy of continuous improvements to our products and service, we reserve the right to change designs or specifications without prior notice.