

Blackwood Pedestrian Link, South Wales



Blackwood Pedestrian Link, South Wales

Challenge

A major retail park was completed in 2002 in Blackwood, South Wales, as part of Caerphilly Borough Council's ongoing Blackwood Action Plan to stimulate further developments in the town. The retail park was built relatively close to the town centre, but was separated from the High Street by a sharp incline that was not pedestrian user-friendly.

The challenge was to develop an improved pedestrian link between the High Street and the retail park that would provide an accessible, attractive and durable route for shoppers to travel in either direction, and create a public space, enhancing the image of the town. The scheme had to use materials consistent with those used in the retail park and surrounding buildings.

Solutions

Marshalls used its combined expertise in paving, kerb, drainage, traffic management and street furniture to assist the design team in formulating a hard landscaping and street furniture solution for the project.

The main carriageway and a major part of the pedestrian areas including the terraced ramp sections were paved with Marshalls' Tegula traditional concrete setts which suitably designate the location as a

pedestrian zone. Contrasting Silver Grey Marshalls' Conservation kerbs were used as edging for the pedestrian ramp terraces and steps, with the coarse granite aggregates contrasting with the mixed darker colours of the Tegula setts. The Conservation kerbs were supplied by Marshalls, with permanent anti-slip black visibility strips on the rising edge and tread of the kerbs, giving extra awareness of the steps to visually impaired pedestrians. This design feature was implemented some 18 months ahead of current building regulations that now require permanent visibility strips on both the rising edge and step tread.

Marshalls' Saxon Buff coarse textured paving was chosen for the main upper and lower pedestrian plaza areas. The polished Yorkstone aggregates used in Saxon paving provide a durable surface with excellent slip and skid resistance for the predicted heavy pedestrian traffic. The 'softer' aesthetic qualities of Saxon Buff paving successfully blend the contemporary street furniture elements of the area with the more traditional appearance of the surrounding buildings.

Tegula cobbles were used to form a contrasting circular pattern surrounding the trees planted within the lower pedestrian plaza.

Products Used:

- Tegula Traditional Setts
- Special Conservation Kerbs
- Saxon Buff Paving, coarse textured
- Mistral Silver Grey Paving
- Sineu Graff Series 9600
- Stainless Steel Guardrail
- Birco Landscape Drain

Specialist involved:


Marshalls
street furniture


Marshalls
block paving


Marshalls
paving


Marshalls
kerb



Marshalls

Transforming Britain's Landscapes

The most visually striking feature of the scheme is the innovative balustrade. This was created using Marshalls' Sineu Graff Series 9600 stainless steel guardrail, to serve a dual role as a pedestrian safety barrier and an aesthetically-pleasing contemporary design feature of the scheme, blending with the more traditional appearance of the paving.

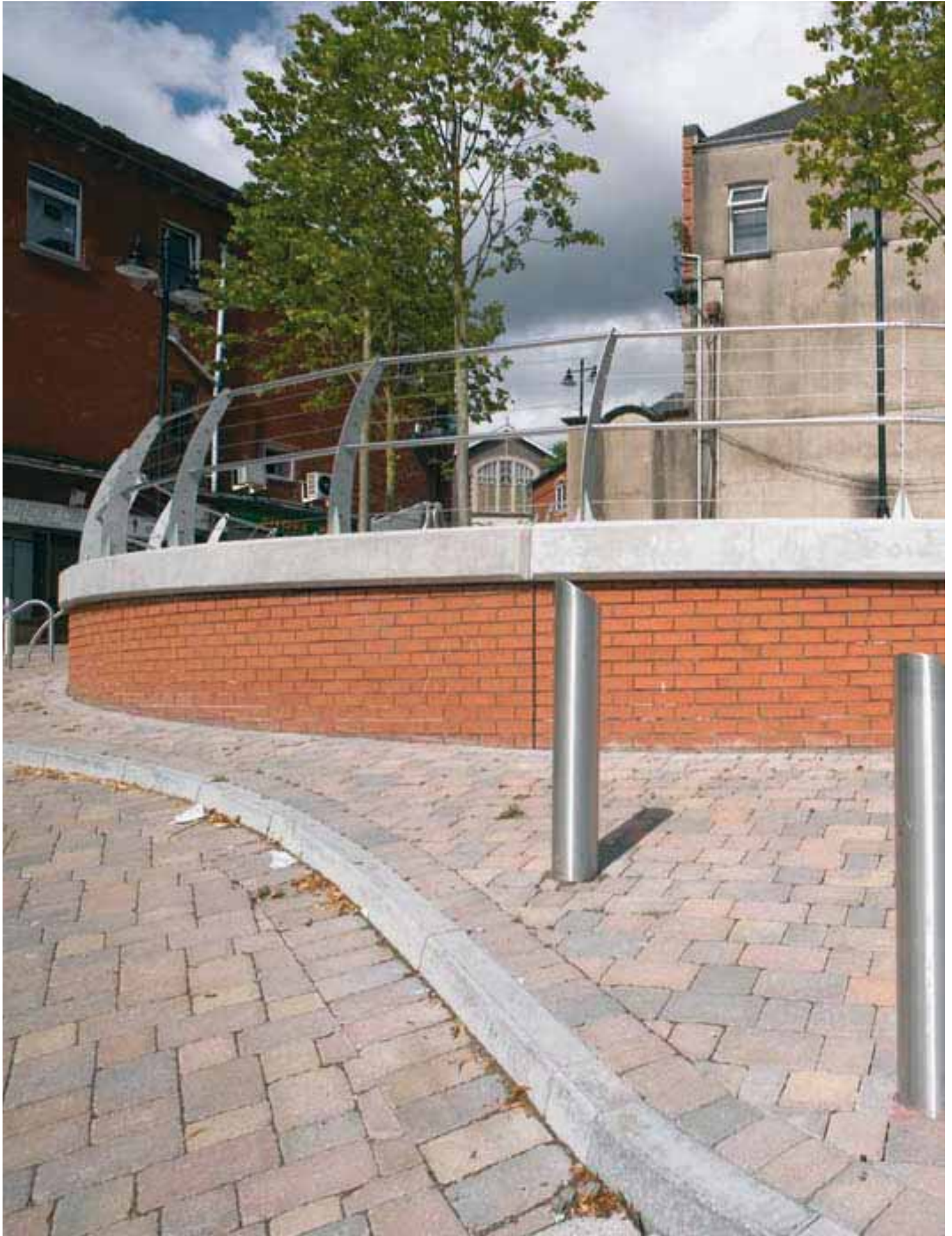
Extra detailing on the development included the use of Marshalls' Mistral Silver Grey granite aggregate paving blocks as vehicle rumble strips for residential and commercial traffic entering the area. They were also used to form a raised crossing for pedestrians at the edge of the retail park.

Benefits

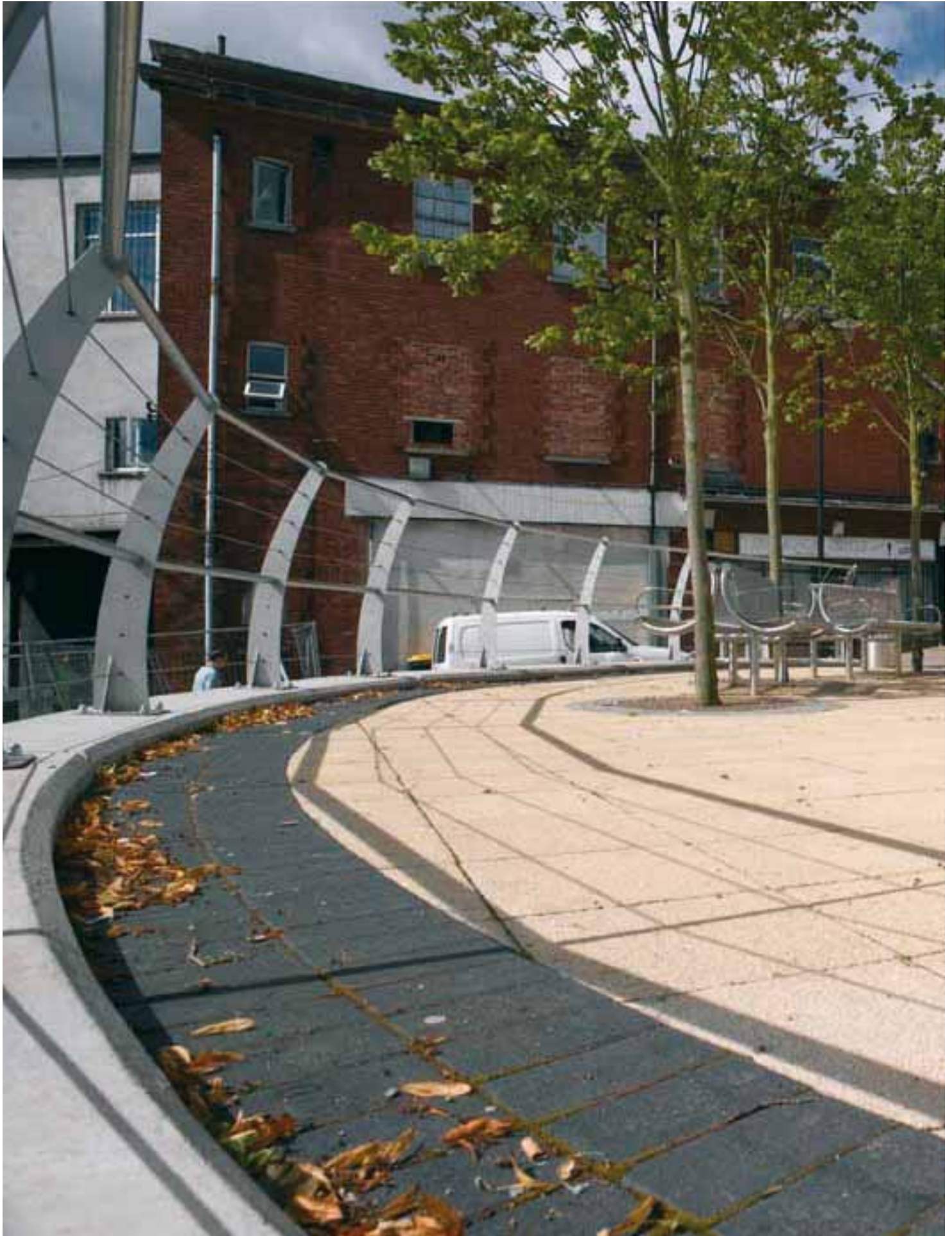
The pedestrian link has set a high standard for further improvements throughout Blackwood, and has opened up the access point between the existing and new retail developments in the town. Since completion of the project, the improvements have resulted in plans for additional retail outlets in the refurbished area.



Blackwood Pedestrian Link, South Wales



Blackwood Pedestrian Link, South Wales



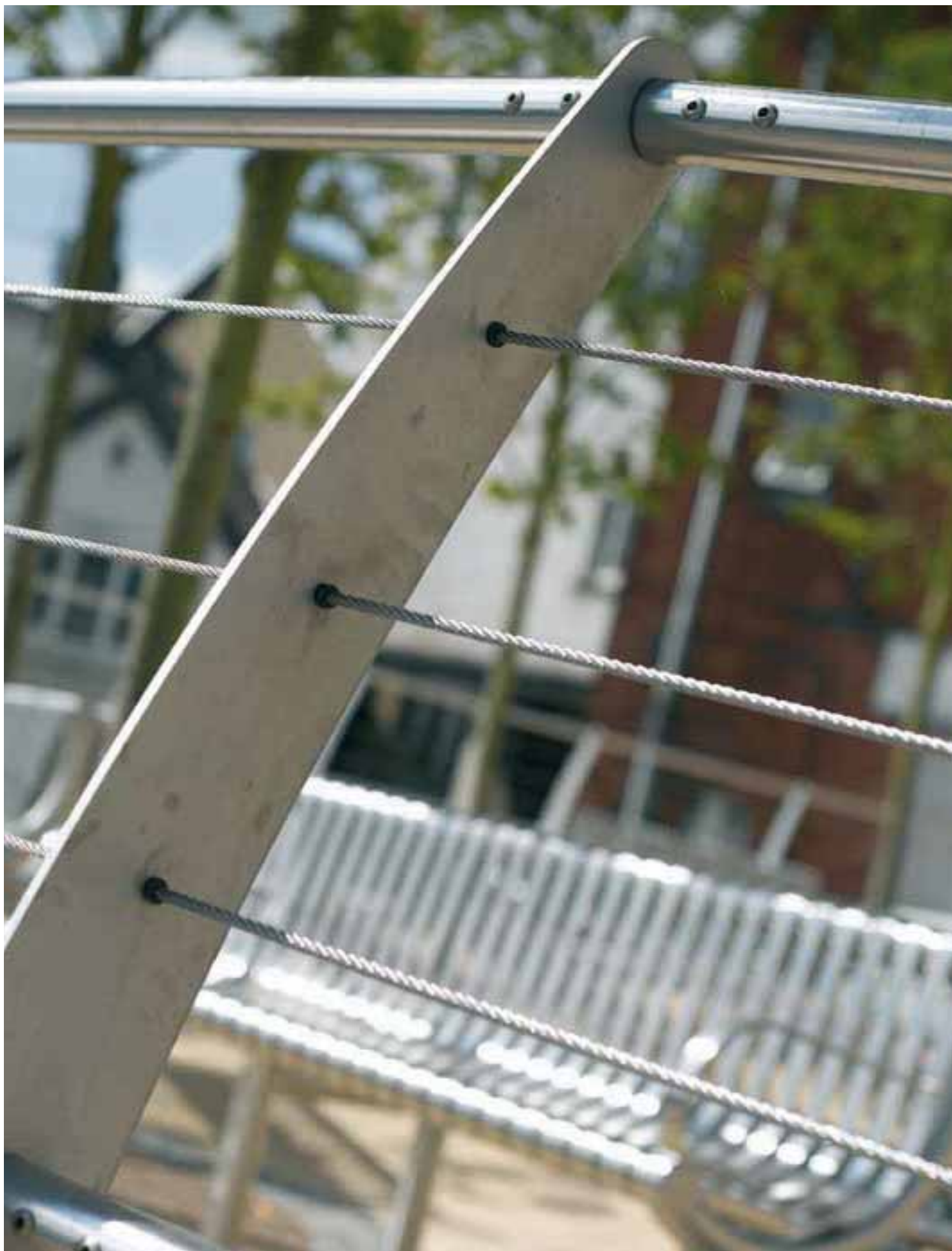
Blackwood Pedestrian Link, South Wales



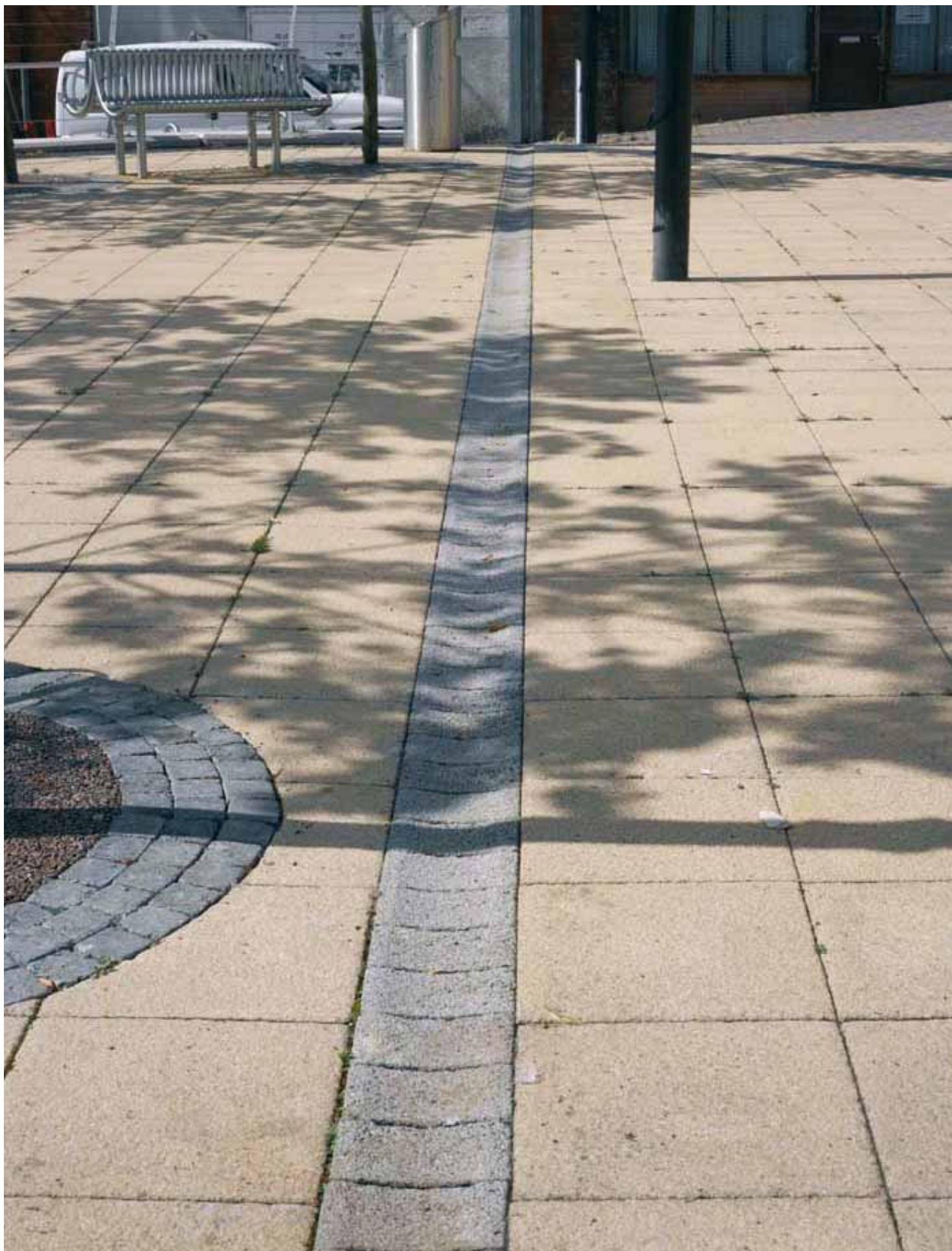
Blackwood Pedestrian Link, South Wales



Blackwood Pedestrian Link, South Wales



Blackwood Pedestrian Link, South Wales



Blackwood Pedestrian Link, South Wales



Blackwood Pedestrian Link, South Wales



Blackwood Pedestrian Link, South Wales



Blackwood Pedestrian Link, South Wales



Blackwood Pedestrian Link, South Wales



Blackwood Pedestrian Link, South Wales



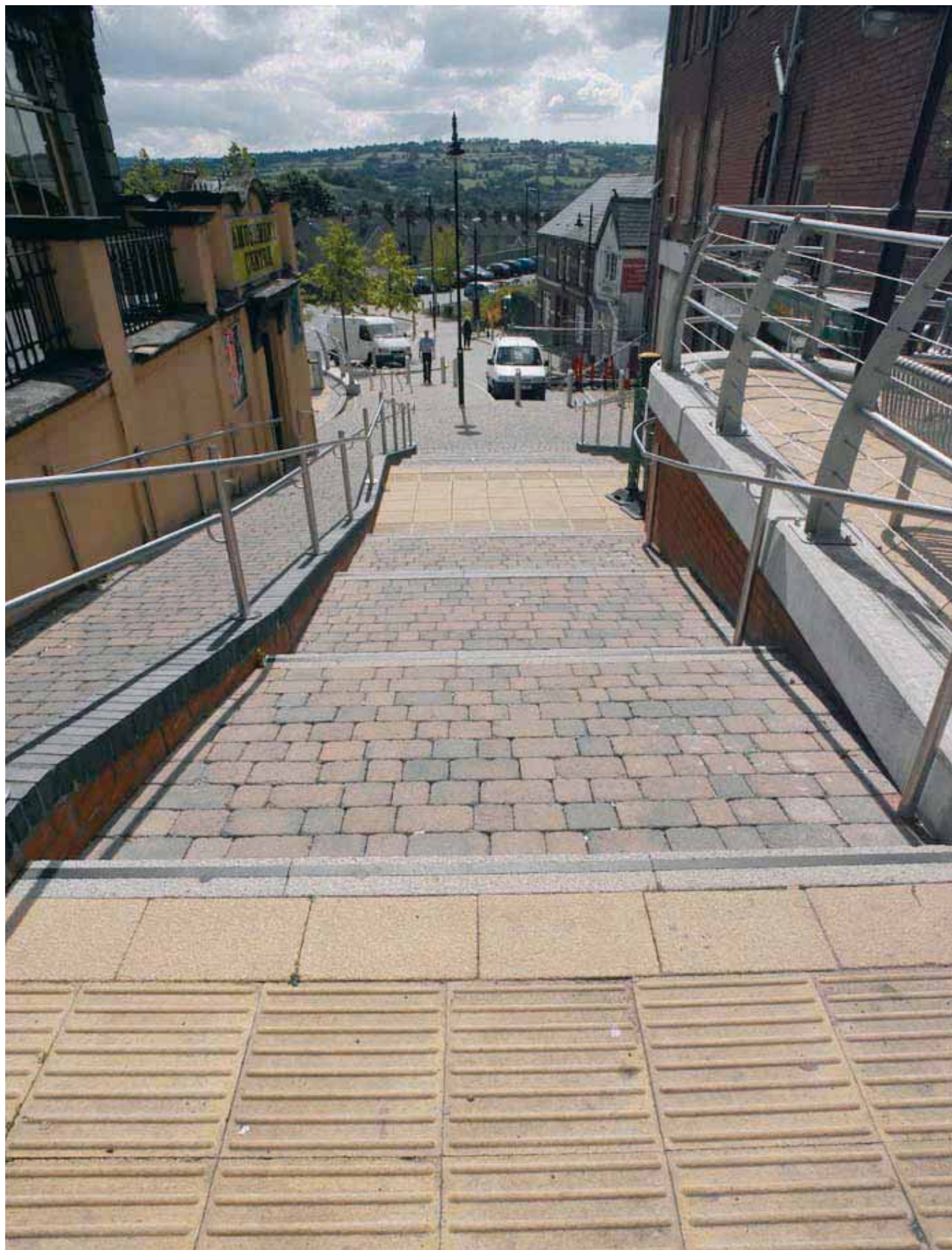
Blackwood Pedestrian Link, South Wales



Blackwood Pedestrian Link, South Wales



Blackwood Pedestrian Link, South Wales



Blackwood Pedestrian Link, South Wales



Blackwood Pedestrian Link, South Wales



Blackwood Pedestrian Link, South Wales



Blackwood Pedestrian Link, South Wales



Blackwood Pedestrian Link, South Wales



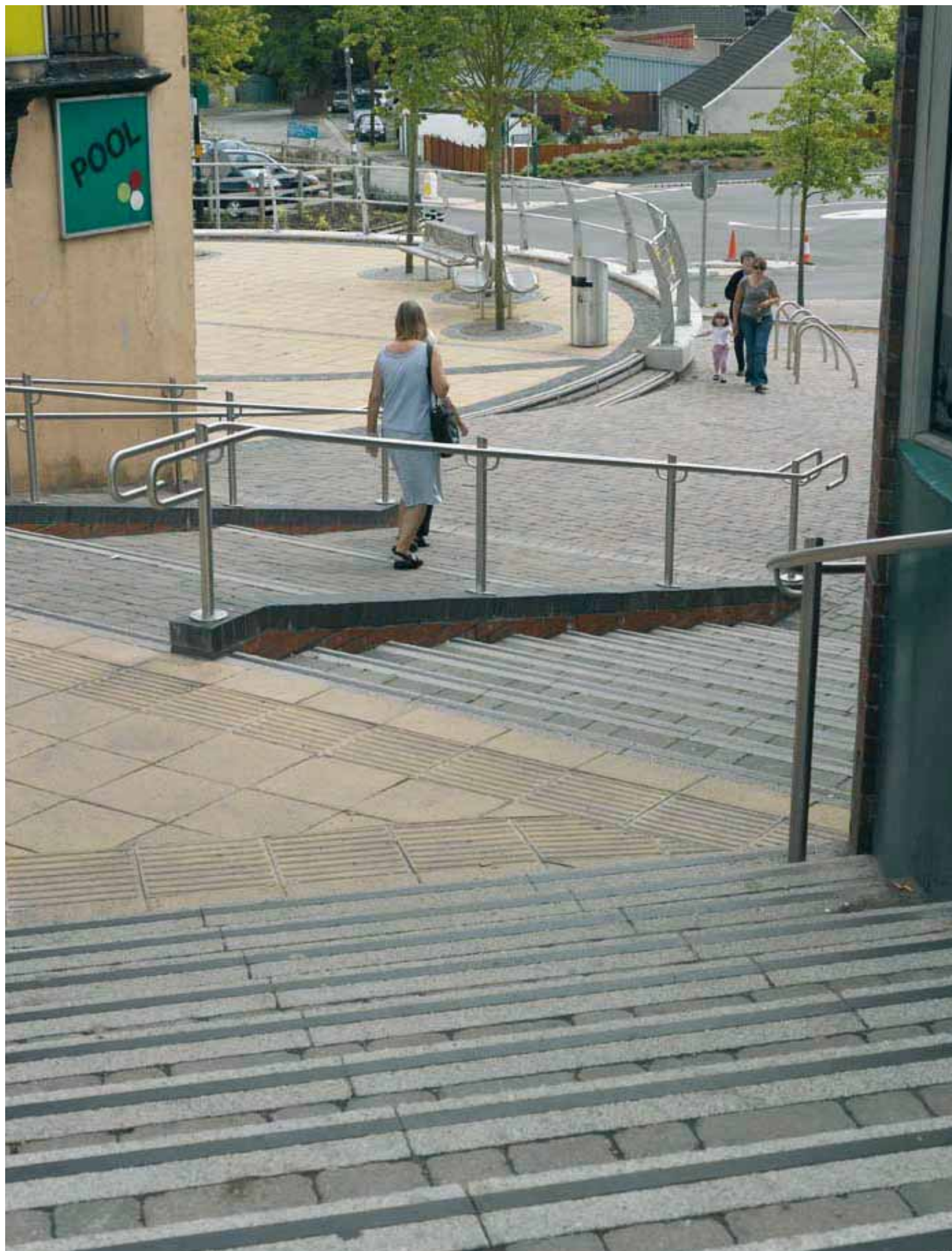
Blackwood Pedestrian Link, South Wales



Blackwood Pedestrian Link, South Wales



Blackwood Pedestrian Link, South Wales



Blackwood Pedestrian Link, South Wales



Blackwood Pedestrian Link, South Wales



Blackwood Pedestrian Link, South Wales