

# Compriband Timber Max

## Impregnated Sealing Tape for Joints with Significant Movement

### Description

Compriband Timber Max is an impregnated joint sealing tape for use in a wide variety of movement joints up to 50 mm wide and can accommodate up to 37 mm of movement. Weather tight against the most severe combinations of wind and rain, it satisfies most expectations as an external weather seal in building and civil engineering applications, with particular suitability for sealing the head and cills of windows installed in timber frame construction. The product has been extensively tested and has a proven reputation across both the UK and Europe.

### Material

A soft and flexible open cell polyurethane foam, impregnated with an acrylic based, UV stabilised resin. The resin is water repellent and contains a fire retardant.

### Product Advantages

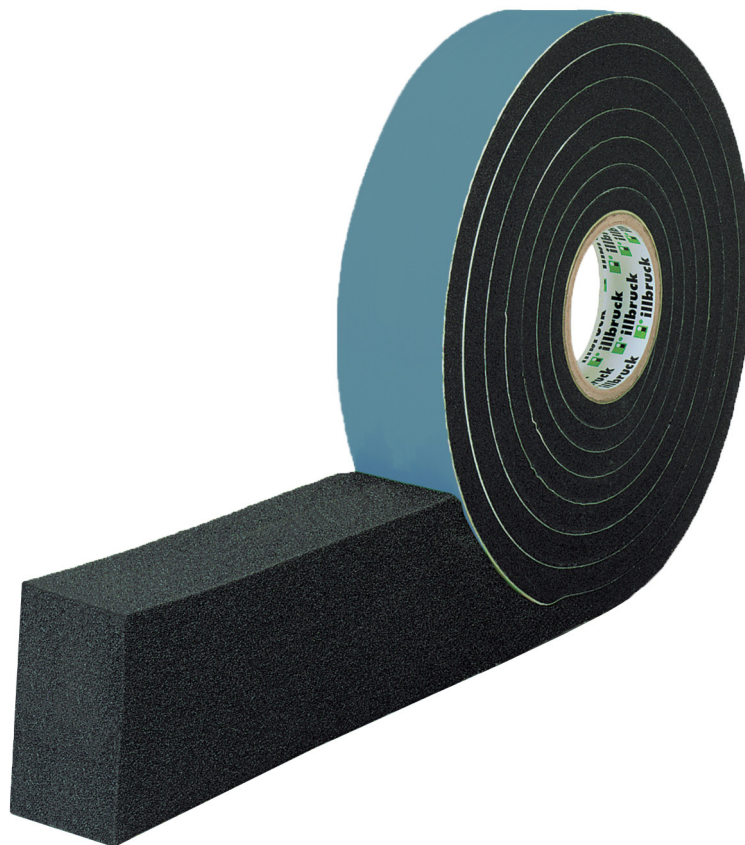
- Accommodates up to 37 mm of joint movement within a maximum 50 mm wide gap
- Weather seal for wind-driven rain
- Can accommodate differential movement on timber frame construction up to 5 storeys
- Seals effectively – no remedial visits or wet sealants
- Breathable – for vapour diffusion
- Continually expands and contracts to accommodate movement whilst still sealing the joints
- Easy to apply in any weather
- Self-adhesive side to aid initial location
- Thermal and acoustic insulation
- Can be painted with commercially available vinyl emulsions.

### Colour

Anthracite

### Availability

Supplied as pre-compressed rolls with a self-adhesive side to aid initial location. Roll Length: 5.2m



### Service

We have experienced field sales staff and a technical support team available to offer support and advice on any special sealing requirements.

### Dimensions

40/13 – 40

Tape width 40 mm. For joints where the gap will vary between 13 & 40mm.

50/13 – 50

Tape width 50 mm. For joints where the gap will vary between 13 & 50mm.

### Application Instructions

- Detailed application instructions are available and provided with every order.
- Before installation, measure the width of the joint and ensure the total movement, after any settlement, is within the capacity of the selected tape size (Fig 1 & 2).

- Cut off the preliminary strip and the opening wedge at the start of the roll.
- If installing tape into a construction joint, it may be applied either horizontally or vertically (from bottom to top.) However, when applying to a door or window frame the horizontal seals must be applied before the vertical ones (Fig 4). Tape must be applied with the adhesive side to the frame when working with fenestration but may be applied in any order when working with construction joints. In both cases, do not stretch the tape. When working in damp or cold conditions a wood wedge should be used to hold the tape in position until it is expanded (Fig 3). Ensure the tape is recessed by a minimum of 2mm from the front of the joint.

**compriband**

# Compriband Timber Max

Tremco illbruck Limited  
Bentall Business Park, Glover  
Washington, Tyne & Wear NE37 3JD  
Tel: 0191 419 0505 Fax: 0191 419 2200  
Email: sales@tremco-illbruck.co.uk  
Website: www.tremco-illbruck.com

## Technical Specification

	Standard	Result
Material		Polyurethane cellular foam, impregnated with a modified flame retardant artificial resin
Building Classification	DIN 4102	B1, self-extinguishing, P-NDS 04-229
Thermal Conductivity	DIN 52612	$\lambda_{10} < 0.055 \text{ W/m/K}$
Vapour Resistivity	DIN 52615	$\mu < 100$
Working Temperature Range		-30°C to +90°C
Resistance to Root Penetration	DIN 4062	The requirements of DIN standards are met
Air Permeability	EN42/DIN 18055	$a < 0.1 \text{ m}^3 / [\text{h.m.}(\text{daPa})^n]$
Weathering Test	DIN 53387	The requirements of DIN standards are met
Watertight Against Driving Rain	EN 86/DIN 52453	The requirements of the DIN standard are met up to the described joint sizes, giving a minimum of 450 Pa, independently supervised by MPA Hannover
Compatibility with Conventional Construction Methods	DIN 52453	No signs of corrosion observed on iron, zinc, steel, galvanised steel, aluminium and copper. No adverse effects with concrete, aerated concrete, brick, some stones, PVC, Plexiglas or timber
Life Expectancy		> 25 years
Shelf Life & Storage Temperature		2 yrs stored horizontally in dry conditions +1°C to +20°C

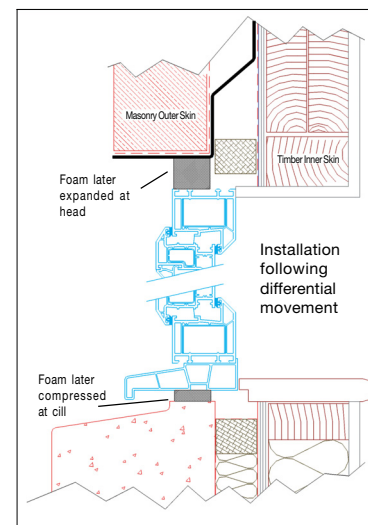


Fig 2 - Expansion and compression of Timber Max after frame movement

- When calculating the length of tape to be fitted, add 10 mm/m to the actual joint length. Be sure to measure the opening and not the window.
- At the end of a roll, cut off the tape wedge finish. Repeat the process with a new roll, making a close compressed butt connection as shown in Fig 3.
- If the seal is to be weather tested using the standard hose test, we recommend that the tape should be allowed 7 - 10 days conditioning in the joint before testing.
- If using Compriband e to seal the window jambs (in conjunction with Timber Max to head and cill), cut and apply the Compriband e to the full height dimension of the frame. Cut and apply the Timber Max to span the full opening width, thereby covering the cut ends of the Compriband e. Ensure that the front (external) edges of both products are positioned in the same plane to achieve a continuous seal.

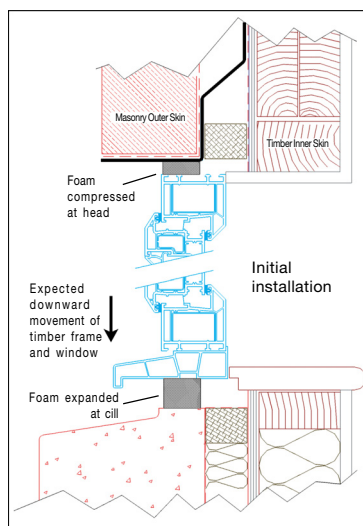


Fig 1 - Location of Timber Max at initial installation

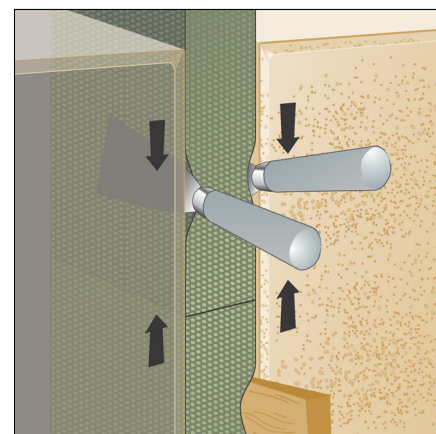


Fig 3 - Compression of tape to make watertight butt joints

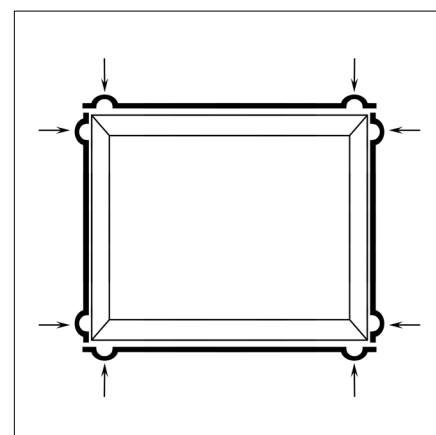


Fig 4 - Tape application at corners (Note: oversize length 10mm/m)

NB: If considering CWCT hose test, please refer to technical department for advice.

Whilst every care has been taken in the preparation of this information, no warranty is given or implied in connection with any recommendation or suggestion made herein or by our Representatives, Agents or Distributors. We reserve the right to modify specifications from time to time without prior notice. Users are advised to conduct their own tests in order to determine the suitability of the Product for the intended purpose. All goods are supplied subject to standard Conditions of Sale which are available upon request.