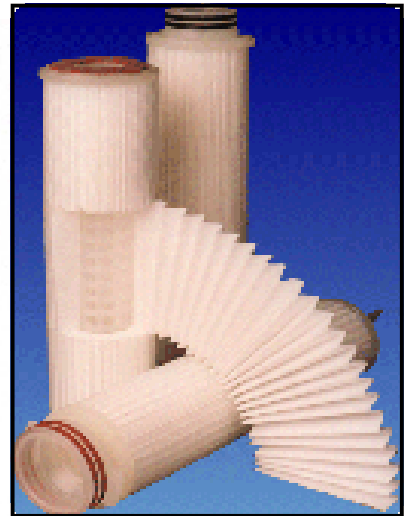


# Auto-klean® filtration

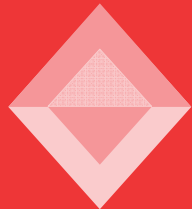
A division of Health & Safety Engineering Ltd

## *Klariflo® Depth filter systems*



A complete range of depth filters  
to suit industrial and domestic  
applications





# Auto-klean® filtration klariflo® filters

The **auto-klean® klariflo®** filters use elements that provide true depth filtration and clarification to controlled density grading from 1 to 100 microns.



**klariflo®** elements are made using a wide range of materials thus enabling us to provide filtration to suit most applications, even with extremes of pressure & temperature.

Depth filtration is, as it says, a deep bed of filter media used to retain solid particles at various levels throughout the body of the filter element.

The efficiency of the **klariflo®** range of filters is gained as the fluid passes through the media. It encounters declining passages which remove progressively smaller particles.

Each element has hundreds of these precision controlled filtering passages engineered for exact uniformity of size, shape, depth & density.



We have been appointed to cover replacements of all **klariflo® filters** and **elements** installed in Kodak equipment with Kodak's approval.

**klariflo®** filters & elements are used in many places, for example:

- Police Stations
- Prisons
- Photographic Studios
- Hospitals
- Universities
- Colleges
- Schools
- Oil Refineries
- Power Stations
- Marine
- and many other industries



## For more information, Contact:

### **Auto-klean® filtration**

A Division of Health & Safety Engineering Ltd

Unit 11a, Ascot Ind. Estate

Lenton Street, Sandiacre, Notts., NG10  
5DJ

Tel: 0870 421 4206

Fax: 0870 421 4207

# auto-klean® filtration

Unit 11a, Ascot Industrial Estate,  
Lenton Street, Sandiacre, Notts. NG10 5DJ

Est. 1923

Tel: 0870 421 4206

Fax: 0870 421 4207

e-mail : [sales@hse-ltd.com](mailto:sales@hse-ltd.com)

## Klariflo HE Absolute Rated Depth Filter Cartridges

**Klariflo HE** precision graded density filters elements are a further development of our already well proven absolute rated depth type filter. These high performance cartridges excel in dirt holding capacity and give extremely low pressure losses as a result of the strictly controlled manufacturing of the fibre matrix.

**Klariflo HE** filter cartridges are produced using an improved manufacturing process resulting in the following features:-

### Absolute Rated Filter Media

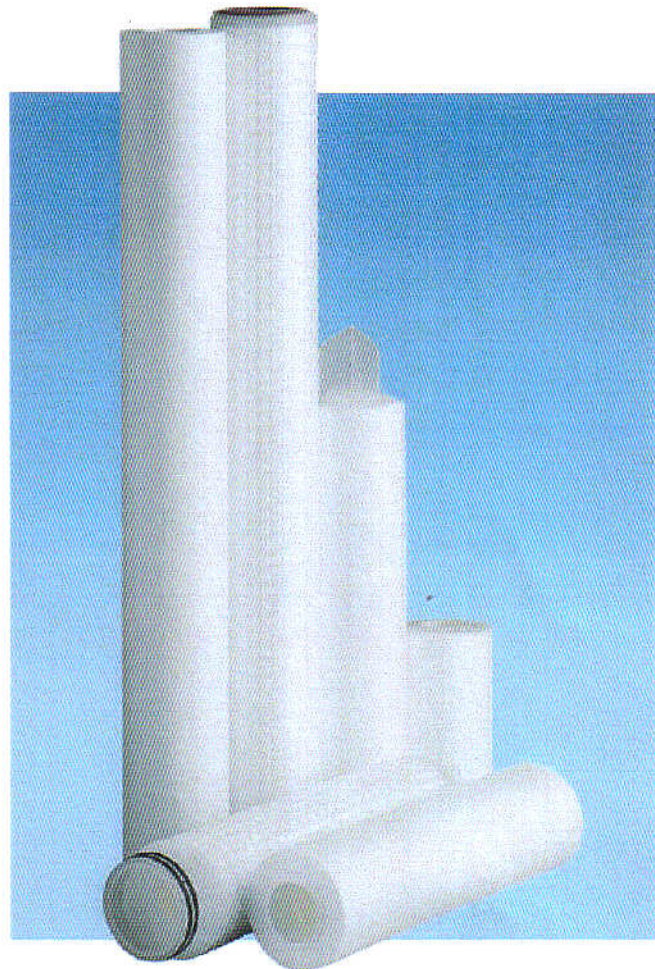
- Available from 0.3 to 180 micron
- Polypropylene or Nylon 6
- Consistent reliable performance

### Unique Construction

- One piece high strength support core
- High void volume, resulting in low clean DP and an excellent dirt holding capacity
- End cap welded direct to the core for extra security and strength
- Thermally bonded fibre matrix minimises fibre migration
- One piece construction up to 1524mm (60")

### Product features

- 100% Polypropylene or Nylon 6
- Materials meet US FDA Title 21 & USP Class VI requirements (PP only)
- WRAS listed and reg 31 approved for use in potable water supplies (PP only)



**Klariflo HE** fibres are blown continuously onto a central support core with fibre diameters controlled to produce different pore sizes throughout the extrusion process. All the layers are interlinked to offer maximum support while ensuring that the high void volume is maintained, but with increasing fibre density towards the cartridge central core- therefore resulting in true depth filtration.

Elements are available up to 1524mm(60") in length, either double open ended or with most common end cap fittings.

A Division of Health & Safety Engineering Ltd  
VAT No. 835 222 643 Reg.No. 5054899

# auto-klean® filtration

Unit 11a, Ascot Industrial Estate,  
Lenton Street, Sandiacre, Notts. NG10 5DJ

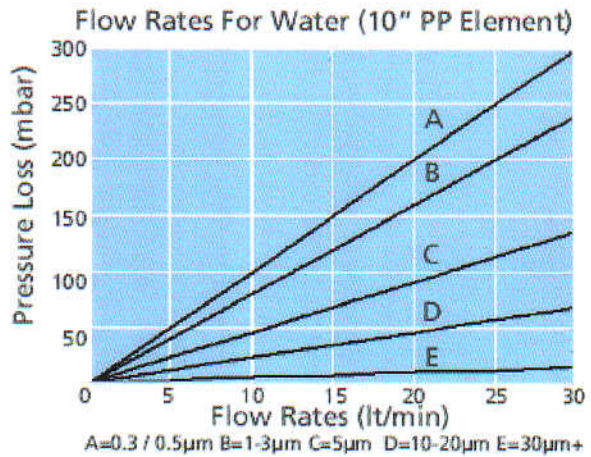
Est. 1923

Tel: 0870 421 4206

Fax: 0870 421 4207

## Klariflo HE Features & Benefits

- ◆ Absolute removal ratings for consistent & reliable performance.
- ◆ Graded density structure for maximum dirt holding capacity.
- ◆ Increased void volume giving high flow rates and low initial pressure losses.
- ◆ Wide chemical compatibility using optional materials polypropylene & Nylon 6
- ◆ Range of absolute ratings from 0.3 to 180 micron (BETA ratio 5000 on 0.3 to 20 micron PP only)
- ◆ Thermal bonding process minimises media migration & ensures minimal extractables
- ◆ Identification & traceability data embossed on every cartridge.



## Dimensions

	PP	NN
Outside diameter	64mm	64mm
Core diameter	28mm	27mm
Length:-	10" (250mm) to 60" (1524mm)	

## Sterilisation & Sanitation

Steam:- 121 °C for 15 mins (20 cycles)  
Hot water:- 90°C for 30 mins (o.2 bar DP Max)

## Maximum Operating Conditions

Temperature	KHE PP	80°C
	KHE PD	100°C
	KHE NN	150°C
	KHE PT	100°C

## Industries & Applications

- ◆ Food & beverage
- ◆ Pharmaceuticals
- ◆ Fine chemicals
- ◆ Electronics
- ◆ Cosmetics
- ◆ Metal Finishing
- ◆ Water Treatment
- ◆ Automotive
- ◆ Petrochemicals
- ◆ Oilfield water injection

Recommended Maximum Differential Pressure: 1.5 Bar

Maximum ΔP	PP Media PP Core	PP Media GFPP Core	Nylon Media Nylon Core	PP Media St.St Core
@ 20°C	4.0	4.0	4.0	4.0
@ 50°C	1.5	2.5	4.0	4.0
@ 80°C	0.25	1.0	1.0	4.0
@ 150°C	-	-	0.5	4.0

A Division of Health & Safety Engineering Ltd  
VAT No. 835 222 643 Reg.No. 5054899



**DESCRIPTION** **auto-klean® klariflo®** filter type E07001T is a non-metallic unit comprising a cover and sump to house the filter element. The sump, which can be supplied transparent or opaque, is fitted with a drain cock. The **auto-klean® klariflo®** filter element is located in the body by integral fixed guides. It has exceptional dirt holding capacity and the extended element life is achieved by true depth filtration.

The body is screwed into the top cover and the seating of a synthetic rubber 'O' ring assures a leakproof seal at hand tightness. Lubrication of the 'O' ring using Dow Corning Releasil 7 Silicone Compound is recommended when necessary. No tools are required for assembly or dismantling and the filter is suitable for installation in a pipeline without support.

A metallic/plastic air-vent is fitted in the filter cover as standard. Filters without this feature can also be supplied.

**APPLICATIONS** Water, both industrial and domestic supplies. Water for photographic use, for medical purposes and for cooling water supplies. Planting solutions and chemical solutions generally.

**ELEMENTS** Diameter 63mm (2.5")  
 Length 254mm (10")  
 Density Grading 1, 2, 3, 5, 7, 10, 15, 20, 30, 40, 50, 75, 100 microns  
 Filter Media Bleached Cotton, Polypropylene, Nylon, Glass Fibre

**CONNECTIONS** 3/4" B.S.P. Parallel Female

**PRESSURE** Maximum working for liquids 10.3 bar (150lb/in<sup>2</sup>) at 23°C  
 8.6 bar (125lb/in<sup>2</sup>) at 55°C

**MATERIALS** Body Clear or Opaque Polycarbonate  
 Cover Acetal Resin

**BODY CAPACITY** 1 litre

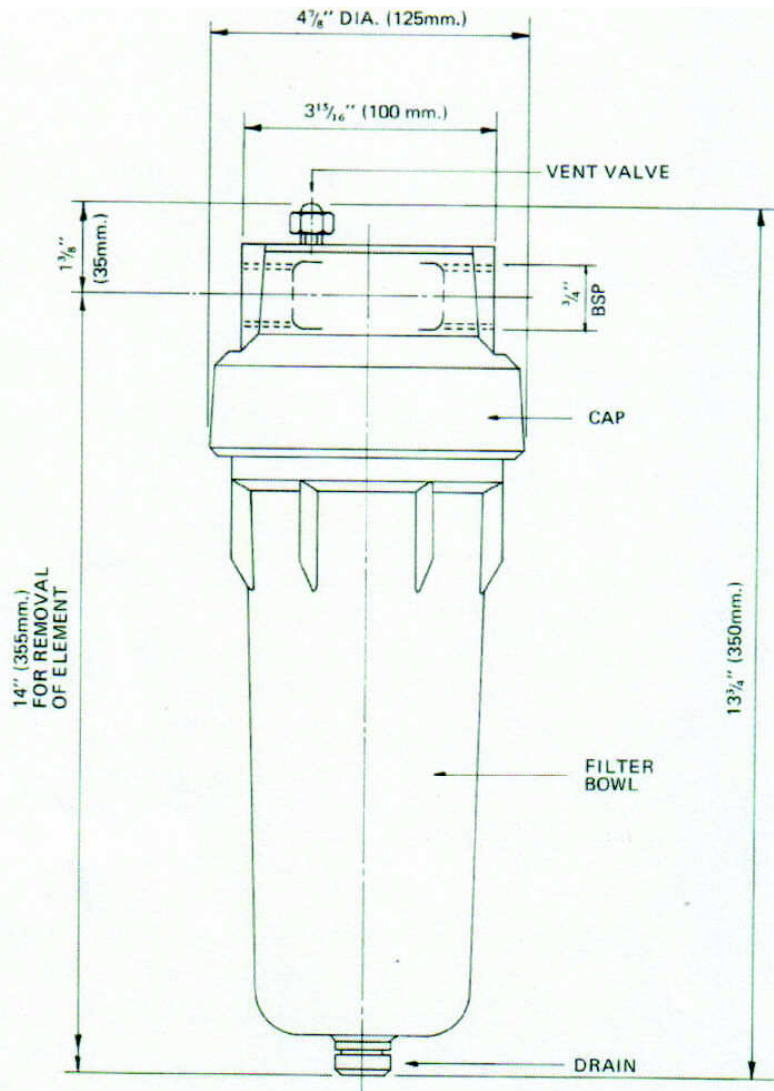
**WEIGHT** 1.4Kg (Dry)

**DIMENSIONS** See drawing and table on page 2

**FLOW RATES** The flow rates listed below are for a cotton filtering medium and are based on an initial pressure drop of 0.2 bar (3lb/in<sup>2</sup>) across a clean element.



Service	Viscosity		Capacity							
	Seconds Redwood No.1	Degrees Engler	Gallons Per Hour				Litres Per Hour			
Water & Aqueous Solutions			Density Grading - Microns							
			1	5	10	20	1	5	10	20
			37	170	300	300	170	775	1360	1360
Viscous Liquids	50	1.75°	7	70	200	300	32	320	910	1360
	100	3.3°	2.5	30	80	150	11	135	365	680
	250	8.1°	-	10	20	70	-	45	115	320



**TYPE E07001T**

**auto-klan<sup>®</sup> filtration limited**  
 Engineers in Filtration



# TYPES E07001 E07002

**DESCRIPTION** **auto-klean® klariflo®** filters E07001 and E07002 give clarification to micron limits. The elements are retained in position within the filter by means of a single nut thus facilitating quick and easy removal. This method of construction allows the unit to be dismantled with the minimum of labour when thorough cleaning and element replacement are required. The top cover containing the inlet and outlet ports has four bosses, drilled and tapped, enabling the filter to be mounted according to the handling required. Both top and bottom joints are groove retained and are available in various materials.

The specification to which **auto-klean® klariflo®** filters are manufactured depends upon the application. These filters are therefore suitable for the clarification of a wide range of liquids and gases with varying conditions of temperature and pressure.

**APPLICATIONS** Chemicals generally, water applications including photographic use, bright quenching and cutting fluids, compressed air, plating solutions, oils and distillates.

**ELEMENTS**

Diameter	63mm (2.5")
Length	254mm (10")
Density Grading	1,2,3,5,7,10,15,20,30,40,50,75,100 microns
Filter Media	Bleached Cotton, Polypropylene, Glass Fibre

**CONNECTIONS** 3/4" B.S.P. Parallel Female

**PRESSURE**

Working	7 bar (100lb/in <sup>2</sup> )
Test	14 bar (200lb/in <sup>2</sup> )

**TEMPERATURE**

Maximum	120°C (250°F)
---------	---------------

Special designs available to order for higher temperatures.

**MATERIALS**

Standard	Body Tube	Mild Steel
	Covers	Cast Iron
	Body	Copper Tube
	Covers	Gun Metal

**BODY CAPACITY** E07001 - 1.0 litres (1.8 pints)      E07002 - 2.0 litres (3.6 pints)

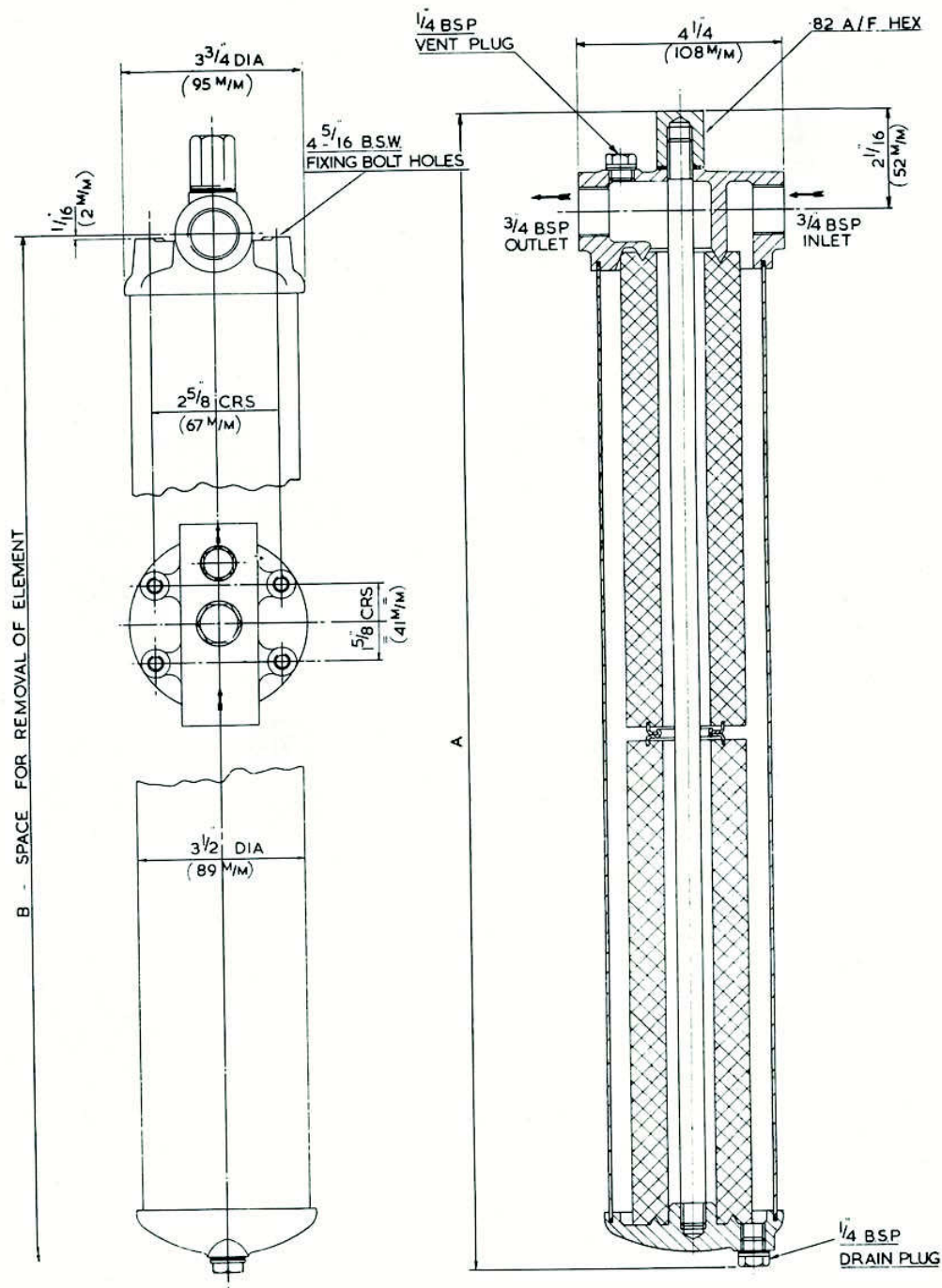
**WEIGHT** E07001 - 3.5Kg (7.5lbs)      E07002P - 4.5Kg (10lbs)

**DIMENSIONS** See drawing and table on page 2

**FLOW RATES** The flow rates listed below are for a Cotton filtering medium and are based on an initial pressure drop of 0.2 bar (3lb/in<sup>2</sup>) across a clean element.



Service	Type	Viscosity		Capacity							
		Seconds Redwood No.1	Degrees Engler	Gallons Per Hour				Litres Per Hour			
				Density Grading - Microns							
				1	5	10	20	1	5	10	20
Water & Aqueous Solutions	E07001	-	-	37	170	300	300	170	775	1360	1360
	E07002	-	-	74	340	600	600	340	1550	2720	2720
Viscous Liquids	E07001	50	1.75°	7	70	200	300	32	320	910	1360
		100	3.3°	2.5	30	80	150	11	135	365	680
		250	8.1°	-	10	25	70	-	45	115	320
	E07002	50	1.75°	14	140	400	600	64	640	1820	2720
		100	3.3°	5	60	160	300	22	270	730	1360
		250	8.1°	-	20	50	140	-	90	230	640



### TYPES E07001, E07002

Type	Number of Elements	Dimensions			
		A		B	
		ins.	mm.	ins.	mm.
E07001	1	13 $\frac{3}{8}$	352	16	406
E07002	2	24	609	26 $\frac{1}{2}$	673

# auto-klean® filtration limited

Engineers in Filtration

Unit 11a, Ascot Industrial Estate,  
Lenton Street,  
Sandiacre,  
Notts. NG10 5DJ, U.K.

Tel. 0870 421 4206  
Fax. 0870 421 4207

www.auto-kleanfiltration.co.uk  
E-Mail: sales@hse-ltd.com





# TYPES E05001P E07002P

**DESCRIPTION** **auto-klean® klariflo®** filters E05001P and E07002P are high-pressure filters designed to give clarification to micronic limits. Exceptional life and dirt holding capacity are achieved by true depth filtration. The construction employed makes these filters ideal for application with working pressures up to 600 pounds per square inch. They are provided with in-line screwed connections.

Special high-pressure versions of other **auto-klean® klariflo®** filters, can be designed to specific requirements. These filters are, therefore, suitable for the clarification of a wide range of liquids and gases with varying conditions of temperature and pressure.

**APPLICATIONS** Chemicals generally, water, compressed air and gases, bright quenching oils and distillates.

**ELEMENTS** Diameter 63mm (2.5")  
 Length 254mm (10")  
 Density Grading 1,2,3,5,7,10,15,20,30,40,50,75,100 microns

**CONNECTIONS** E05001P ½" B.S.P. Parallel Female  
 E07002P ¾" B.S.P. Parallel Female

**PRESSURE** Working 41 bar (600lb/in<sup>2</sup>)  
 Test 69 bar (1000lb/in<sup>2</sup>)

**TEMPERATURE** Maximum 150°C (300°F)

**MATERIALS** Standard Body & Base Fabricated Steel  
 Special Body & Base Stainless Steel

**BODY CAPACITY** E05001P - 1.3 litres (2.6 pints) E10002D - 2.4 litres (4.8 pints)

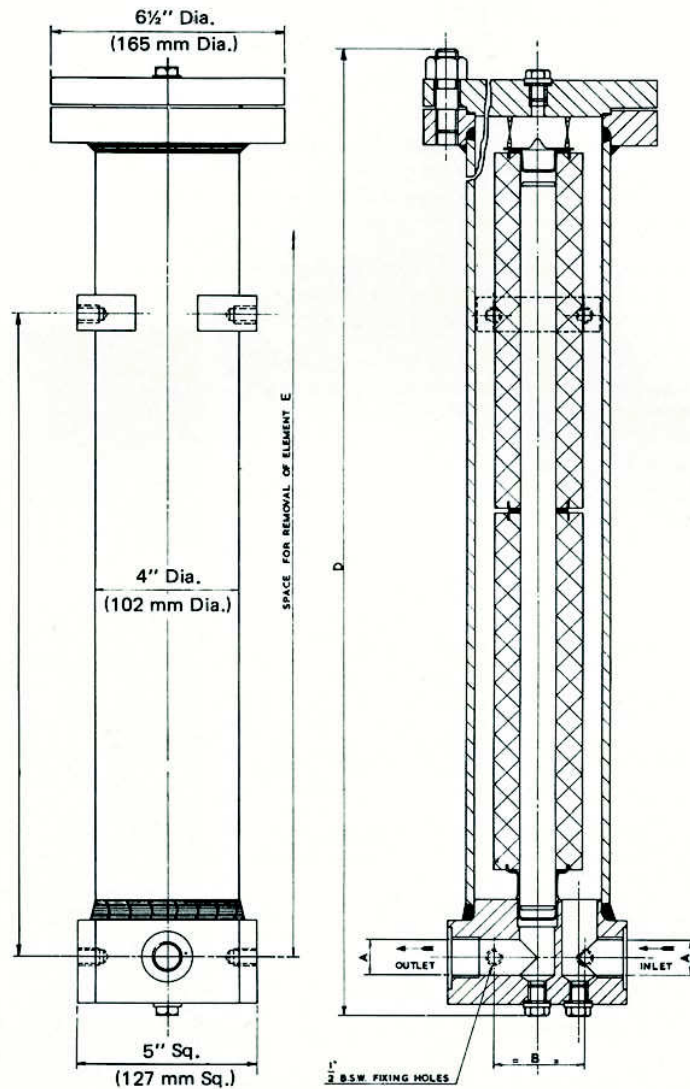
**WEIGHT** E05001P - 21Kg (46lbs) E07002P - 26Kg (57lbs)

**DIMENSIONS** See drawing and table on page 2

**FLOW RATES** The flow rates listed below are for a Cotton filtering media and are based on an initial pressure drop of 0.2 bar (3lb/in<sup>2</sup>) across a clean element.



Service	Type	Viscosity		Capacity							
		Seconds Redwood No.1	Degrees Engler	Gallons Per Hour				Litres Per Hour			
				Density Grading - Microns							
				1	5	10	20	1	5	10	20
Water & Aqueous Solutions	E05001P	-	-	37	170	300	300	170	775	1360	1360
	E07002P	-	-	74	340	600	600	340	1550	2720	2720
Viscous Liquids	E05001P	50	1.75°	7	70	200	300	32	320	910	1360
		250	8.1°	-	10	25	70	-	45	115	320
	E07002P	50	1.75°	14	140	400	600	64	640	1820	2720
		250	8.1°	-	20	50	140	-	90	230	640



**TYPES E05001P, E07002P**

Type	Number of Elements	A	B	C	D	E
E05001P	1	1/2" B.S.P.	3" (76mm)	—	16 3/8" (416mm)	23 1/2" (597mm)
E07002P	2	3/4" B.S.P.	2 1/2" (63.5mm)	18" (457mm)	27" (686mm)	34" (864mm)

**auto-klean<sup>®</sup> filtration limited**

Engineers in Filtration

Unit 11a, Ascot Industrial Estate,  
Lenton Street,  
Sandiacre,  
Notts. NG10 5DJ, U.K.

Tel. 0870 421 4206  
Fax. 0870 421 4207

[www.auto-kleanfiltration.co.uk](http://www.auto-kleanfiltration.co.uk)  
E-Mail: [sales@hse-ltd.com](mailto:sales@hse-ltd.com)

Auto-Klean is a registered Trade Mark

**DESCRIPTION** auto-klean® klariflo® filters E10001D and E10002D give clarification to micronic limits. Exceptional life and dirt holding capacity are achieved by true depth filtration. The elements are retained in position within the filter bodies by means of single nuts, thus facilitating quick and easy removal. This method of construction allows the unit to be dismantled with the minimum of labour when thorough cleaning and element replacement are required. An integral change-over cock is contained within the cover casting, which also has provision for mounting in the form of a vertical bracket. Both top and bottom joints are groove retained and are available in all materials.

**APPLICATIONS** Fuel oils and distillates.

**ELEMENTS**

Diameter	63mm (2.5")
Length	254mm (10")
Filter Media	Bleached Cotton, Jute, Nylon, Polypropylene, Glass Fibre, Cellulose Acetate.

**CONNECTIONS** 1" B.S.P. or B.S. 1770 Square Flanges.

**PRESSURE**

Working	7 bar (100lb/in <sup>2</sup> )
Test	14 bar (200lb/in <sup>2</sup> )

**TEMPERATURE** Maximum 120°C (250°F)

**MATERIALS**

Standard	Body	Mild Steel
	Covers	Cast Iron

**BODY CAPACITY** E10001D - 1.5 litres (2.6 pints) E10002D - 3.1 litres (5.4 pints)

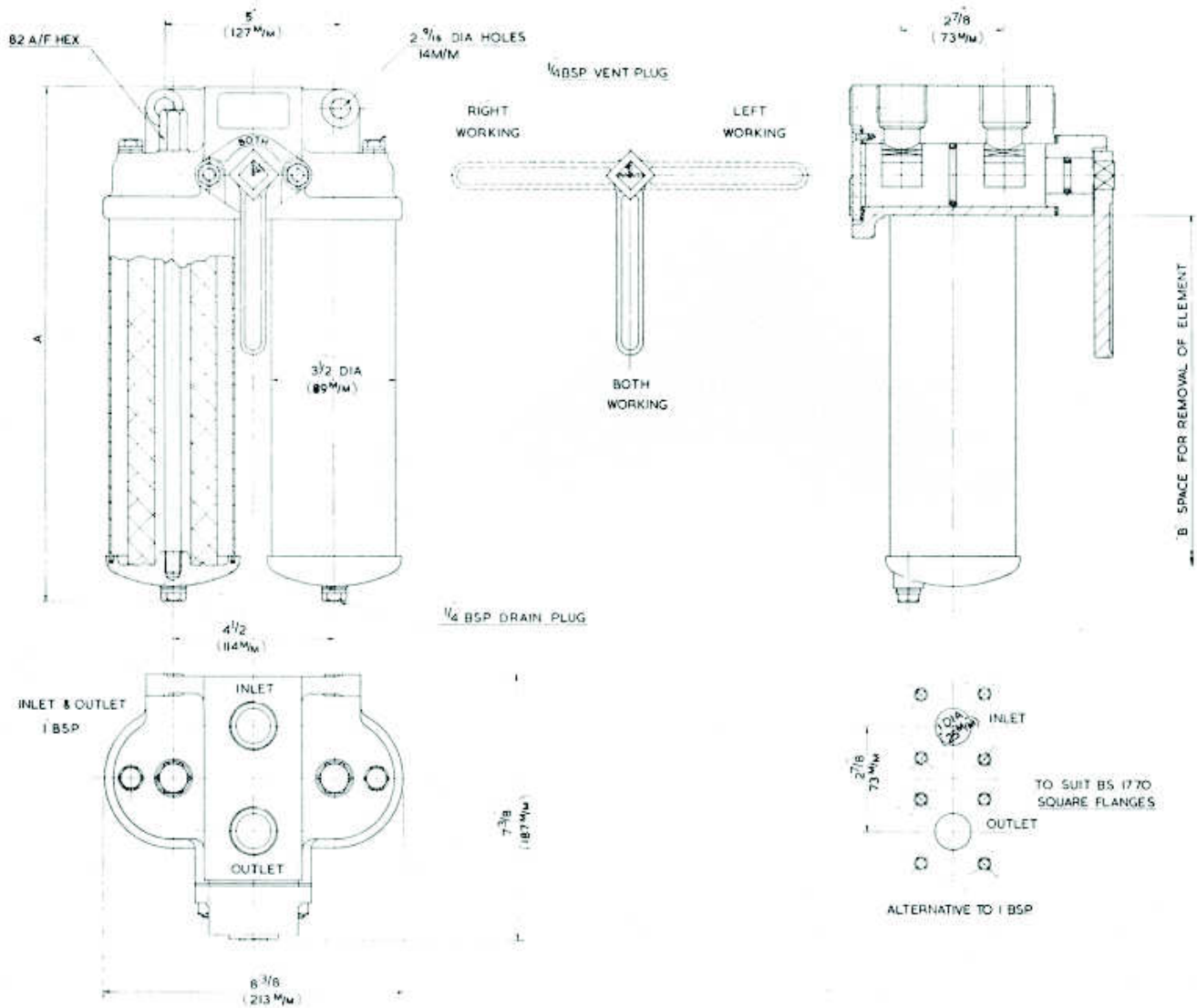
**WEIGHT** E10001D - 13Kg (29lbs) E10002D - 15Kg (34lbs)

**DIMENSIONS** See table on page 2

**FLOW RATES** The flow rates listed below are for a Cotton filtering medium and are based on an initial pressure drop of 0.2 bar (3lb/in<sup>2</sup>) across a clean element.



Service	Type	Viscosity		Capacity							
		Seconds Redwood No.1	Degrees Engler	Gallons Per Hour				Litres Per Hour			
Viscous Liquids	E10001D	50 100 250	1.75° 3.3° 8.1°	Density Grading - Microns							
				1	5	10	20	1	5	10	20
				18	78	160	300	82	354	727	1364
9	39	80	150	41	177	364	682				
3.5	16	30	60	16	73	136	273				
Viscous Liquids	E10002D	50 100 250	1.75° 3.3° 8.1°	36	157	320	600	164	708	1454	2728
				18	78	160	300	36	354	728	1364
				7	32	60	120	14	146	272	546



## TYPES E10001D, E10002D

Type	Elements			Dimensions			
	Number	Positioned Up	Positioned Round	ins	A cms	ins	B cms
E.10001D	1	1	1	14	36	13	33
E.10002D	2	2	1	24½	62	25	64

# auto-klean® filtration limited

Engineers in Filtration

Unit 11a, Ascot Industrial Estate,  
Lenton Street,  
Sandiacre,  
Notts. NG10 5DJ, U.K.

Tel. 0870 421 4206  
Fax. 0870 421 4207

www.auto-kleanfiltration.co.uk  
E-Mail: sales@hse-ltd.com



# TYPES E15003 E15006 E15009

**DESCRIPTION** **auto-klean® klariflo®** filters E15003, E15006, E15009 give clarification to micron limits. Exceptional life and dirt holding capacity are achieved by true depth filtration. The elements are retained in position within the filter by means of a single nut thus facilitating quick and easy removal. This method of construction allows the unit to be dismantled with the minimum of labour when thorough cleaning and element replacement are required. The base containing the inlet and outlet ports, has four bosses, drilled and tapped, for floor bracket mounting. Both top and bottom joints are groove retained and are available in various materials.

The specification to which **auto-klean® klariflo®** filters are manufactured depends upon the application. They are, therefore, suitable for the clarification of a wide range of liquids and gases with varying conditions of temperatures and pressure

**APPLICATIONS** Chemicals generally, water applications including drinking and photographic use, beverages and food products, bright quenching and cutting fluids, compressed air, plating solutions, oils and distillates.

**ELEMENTS**

Diameter	63mm (2.5")
Length	254mm (10")
Density Grading	1,2,3,5,7,10,15,20,30,40,50,75,100 microns
Filter Media	Bleached Cotton, Polypropylene, Glass Fibre

**CONNECTIONS** 1½" B.S.P. Female Parallel.

**PRESSURE**

Working	7 bar (100lb/in <sup>2</sup> )
Test	14 bar (200lb/in <sup>2</sup> )

**TEMPERATURE** Maximum 120°C (250°F)  
Special designs are available for higher temperatures.

**MATERIALS**

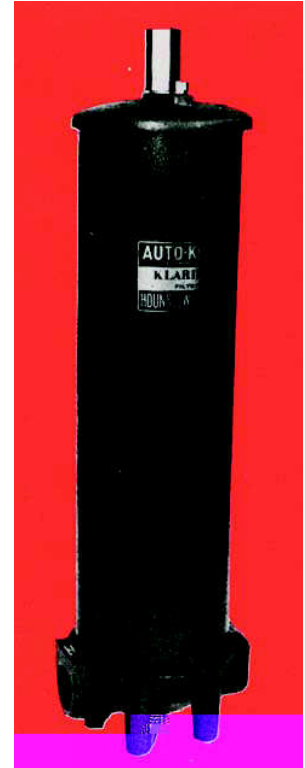
Standard	Body Tube	Mild Steel
	Covers	Cast Iron
or	Body Tube and Covers	Stainless Steel

**BODY CAPACITY** See drawing and table on page 2.

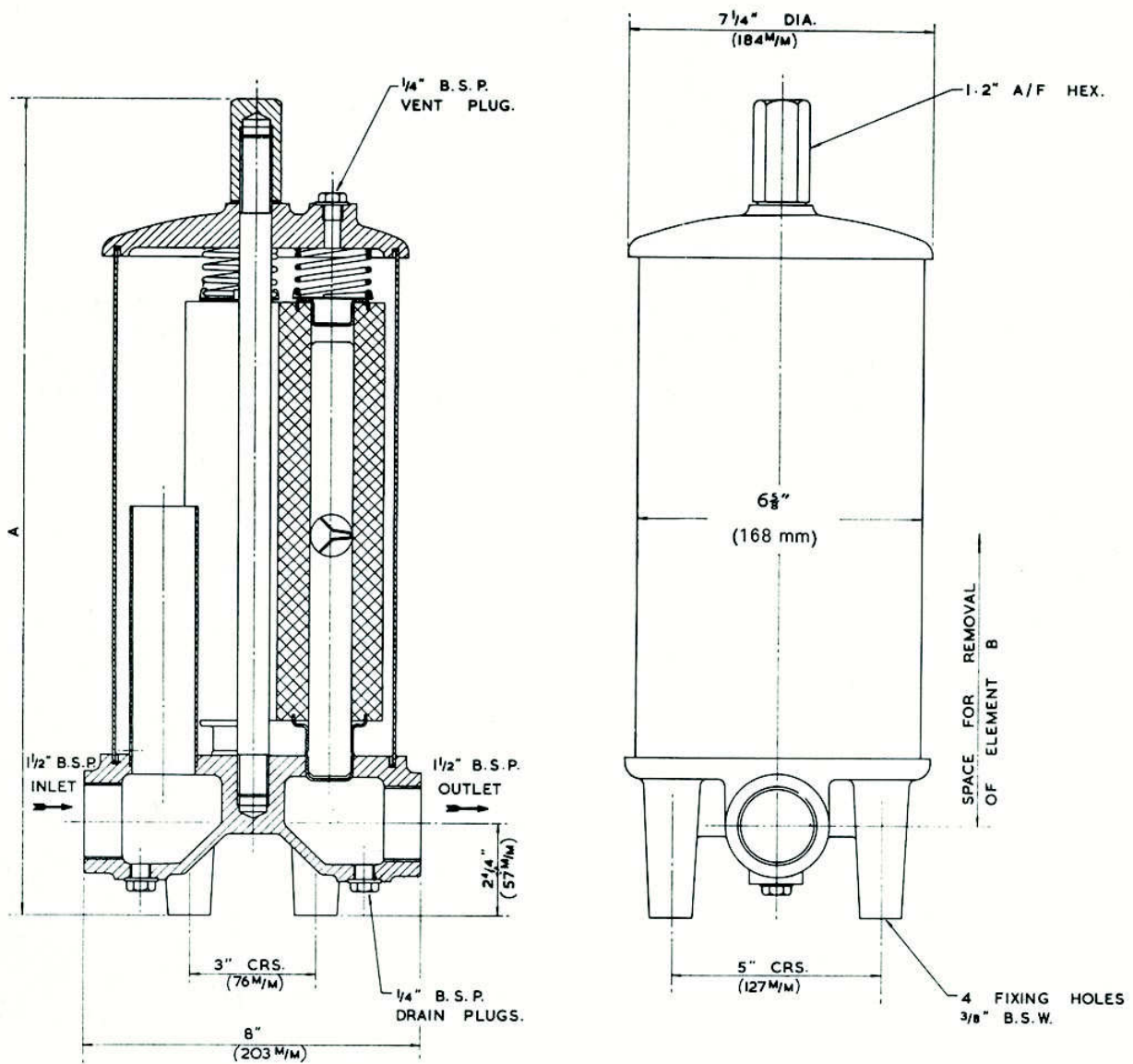
**WEIGHT** E15003 - 15.5Kg (35lbs)      E20018 - 20Kg (44lbs)  
E15009 - 23.1Kg (51lbs)

**DIMENSIONS** See table on page 2

**FLOW RATES** The flow rates listed below are for a Cotton filtering medium and are based on an initial pressure drop of 0.2 bar (3lb/in<sup>2</sup>) across a clean element.



Service	Type	Viscosity		Capacity							
		Seconds Redwood No.1	Degrees Engler	Gallons Per Hour				Litres Per Hour			
				Density Grading - Microns							
				1	5	10	20	1	5	10	20
Water and Aqueous Solutions	E15003	-	-	110	510	900	900	500	2320	4090	4090
	E15006	-	-	220	1020	1800	1800	1000	4640	8180	8180
	E15009	-	-	330	1530	2700	2700	1500	6960	12270	12270
Viscous Liquids	E15003	50	1.75°	21	210	600	900	95	950	2730	4090
		100	3.3°	8	90	240	450	35	410	1090	2040
		250	8.1°	-	30	75	210	-	315	340	940
	E15006	50	1.75°	42	420	1200	1800	190	1900	5450	8180
		100	3.3°	15	180	480	900	70	820	2180	4090
		250	8.1°	-	60	150	420	-	275	680	1910
	E15009	50	1.75°	63	630	1800	2700	285	2850	8180	12270
		100	3.3°	23	270	720	1350	105	1230	3270	6130
		250	8.1°	-	90	225	630	-	410	1020	2860



### TYPES E15003, E15006, E15009

Type	Elements			Dimensions				Body Capacity	
	Number	Positioned Up	Positioned Round	A		B		Gallons	Litres
				in	mm	in	mm		
E15003	3	1	3	19 $\frac{1}{4}$	505	27 $\frac{1}{4}$	692	1.2	5.5
E15006	6	2	3	30	762	37 $\frac{1}{4}$	959	1.8	8.2
E15009	9	3	3	40	1016	51 $\frac{1}{2}$	1308	2.5	11.4

# auto-klean<sup>®</sup> filtration limited

Engineers in Filtration

Unit 11a, Ascot Industrial Estate,  
Lenton Street,  
Sandiacre,  
Notts. NG10 5DJ, U.K.

Tel. 0870 421 4206  
Fax. 0870 421 4207

www.auto-kleanfiltration.co.uk  
E-Mail: sales@hse-ltd.com



# TYPES E20012 E20018

**DESCRIPTION** **auto-klean® klariflo®** filters E20012 and E20018 give clarification to micron limits. Exceptional life and dirt holding capacity are achieved by true depth filtration. The elements are retained in position within the filters by means of a single nut thus facilitating quick and easy removal. This method of construction allows the unit to be dismantled with the minimum of labour when thorough cleaning and element replacement are required. The casting containing the inlet and outlet ports, incorporates two legs, suitably drilled for floor mounting. Both top and bottom joints are groove retained and are available in various materials.

The specification to which **auto-klean® klariflo®** filters are manufactured depends upon the application. They are, therefore, suitable for the clarification of a wide range of liquids and gases with varying conditions of temperatures and pressure

**APPLICATIONS** Chemicals generally, water applications including drinking and photographic use, beverages and food products, bright quenching and cutting fluids, compressed air, plating solutions, oils and distillates.

**ELEMENTS**

Diameter	63mm (2.5")
Length	254mm (10")
Density Grading	1,2,3,5,7,10,15,20,30,40,50,75,100 microns
Filter Media	Bleached Cotton, Polypropylene, Glass Fibre

**CONNECTIONS** 2" B.S.P. Female Parallel.

**PRESSURE**

Working	7 bar (100lb/in <sup>2</sup> )
Test	14 bar (200lb/in <sup>2</sup> )

**TEMPERATURE** Maximum 120°C (250°F)  
Special designs are available for higher temperatures.

**MATERIALS**

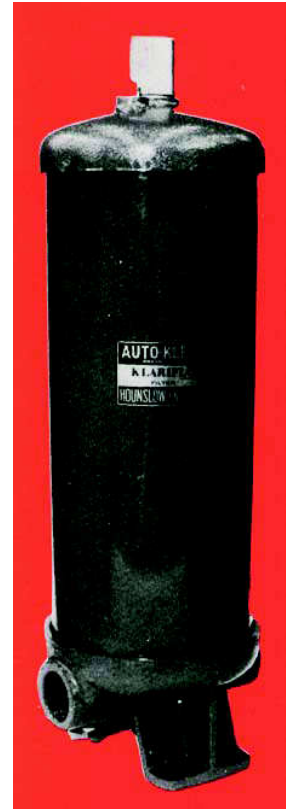
Standard	Body	Mild Steel
	Covers	Cast Iron

**BODY CAPACITY** E20012 - 16.8 litres (3.7 gallons)      E20018 - 23.6 litres (5.2 gallons)

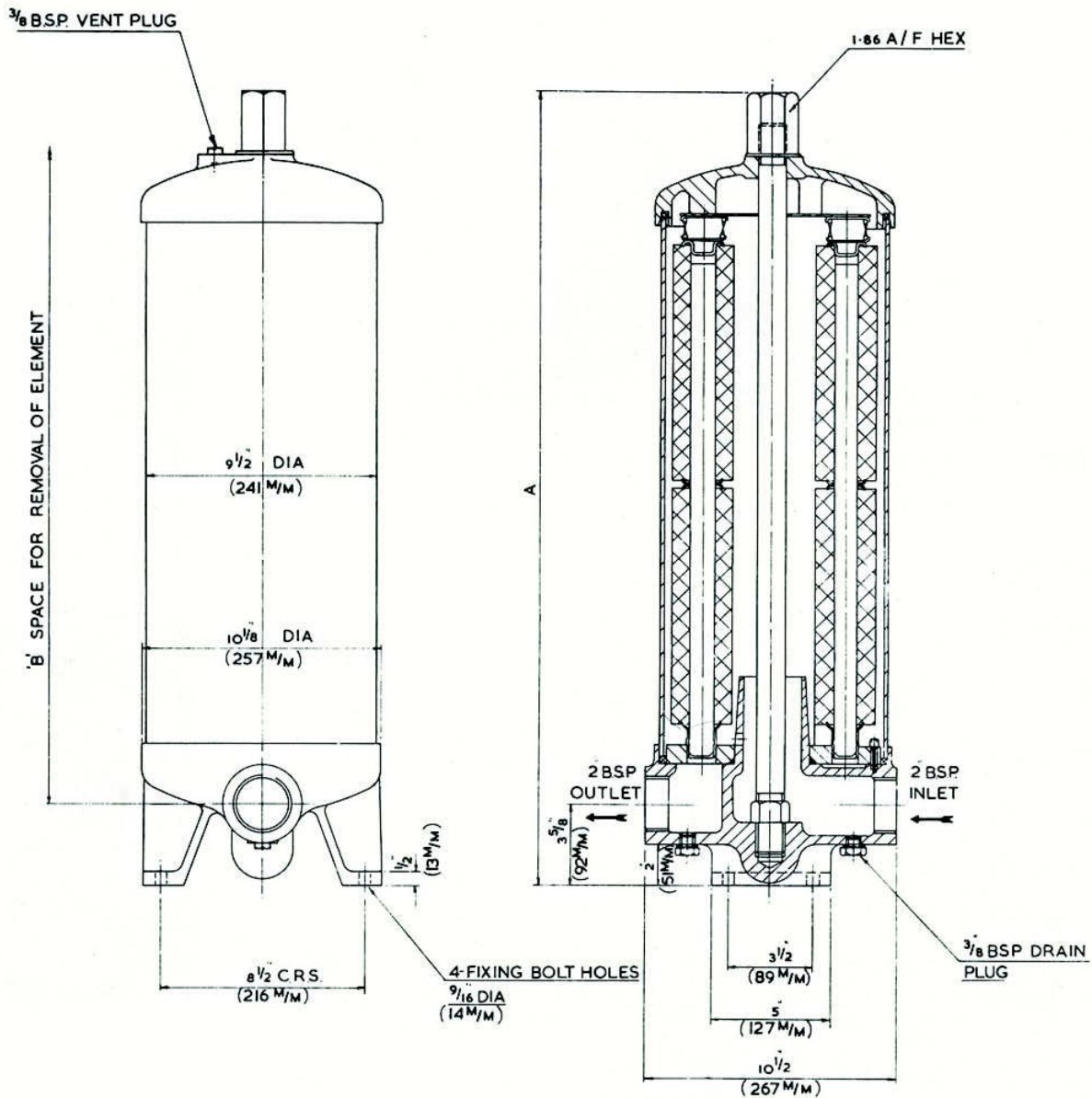
**WEIGHT** E20012 - 48Kg (106lbs)      E20018 - 56Kg (124lbs)

**DIMENSIONS** See table on page 2

**FLOW RATES** The flow rates listed below are for a Cotton filtering medium and are based on an initial pressure drop of 0.2 bar (3lb/in<sup>2</sup>) across a clean element.



Service	Type	Viscosity		Capacity							
		Seconds Redwood No.1	Degrees Engler	Gallons Per Hour				Litres Per Hour			
				Density Grading - Microns							
				1	5	10	20	1	5	10	20
Water and Aqueous Solutions	E20012	-	-	440	2040	3600	3600	2000	9280	16400	16400
	E20018	-	-	660	3060	5400	5400	3000	13900	24600	24600
Viscous Liquids	E20012	50	1.75°	84	840	2400	3600	380	3820	10900	16400
		250	8.1°	-	120	300	840	-	550	1360	3820
	E20018	50	1.75°	126	1260	3600	5400	570	5730	16400	24600
		250	8.1°	-	180	450	1260	-	820	2050	5730



## TYPES E20012, E20018

Type	Elements			Dimensions					
	Number	Positioned Up	Positioned Round	in	A	mm	mm	B	mm
E20012	12	2	6	33 1/8		841	38		965
E20018	18	3	6	43 3/8		1100	49		1245

# auto-klean® filtration limited

Engineers in Filtration

Unit 11a, Ascot Industrial Estate,  
Lenton Street,  
Sandiacre,  
Notts. NG10 5DJ, U.K.

Tel. 0870 421 4206  
Fax. 0870 421 4207

www.auto-kleanfiltration.co.uk  
E-Mail: sales@hse-ltd.com

Auto-Klean is a registered Trade Mark





**TYPES E30030 E30045**  
**E40075 E60108 E60162**

**DESCRIPTION** **auto-klean® klariflo®** filters E30030, E30045, E40075, E60162, constitute a range for large capacities having from thirty to a hundred and sixty-two elements, mounted in a single body. They give clarification to micron limits, exceptional life and dirt holding capacity being achieved by true depth filtration. The provision of handles or eyebolts enables easy removal of the filter cover when thorough cleaning and element replacement are required. These multi-element filters are supplied with in-line pipe connections, legs drilled for floor mounting, pressure gauges, and provision can be made for visible or audible alarms by the incorporation of differential pressure switches.

The specification to which **auto-klean® klariflo®** filters are manufactured depends upon the application. These filters are therefore suitable for the clarification of a wide range of liquids and gases with varying conditions of temperature and pressure.

**APPLICATIONS** Chemicals generally, water applications including drinking and photographic use, beverage and food products, bright quenching and cutting fluids, compressed air, plating solutions, oils and distillates.

**ELEMENTS** Diameter 63mm (2.5")  
 Length 254mm (10")  
 Density Grading 1,2,3,5,7,10,15,20,30,40,50,75,100 microns  
 Filter Media Bleached Cotton, Polypropylene, Glass Fibre

**CONNECTIONS** 76.2mm (3"), 101.6mm (4") and 152.4mm (6") to B.S. Table E.

**PRESSURE** Working 7 bar (100lb/in<sup>2</sup>)  
 Test 14 bar (200lb/in<sup>2</sup>)

**TEMPERATURE** Maximum 149°C (300°F)  
 Special designs available to order for extreme temperatures.

**MATERIALS** Standard Body & Cover Fabricated Steel  
 Special Body & Cover Stainless Steel

**BODY CAPACITY** See table below.

**WEIGHT** See table on page 2.

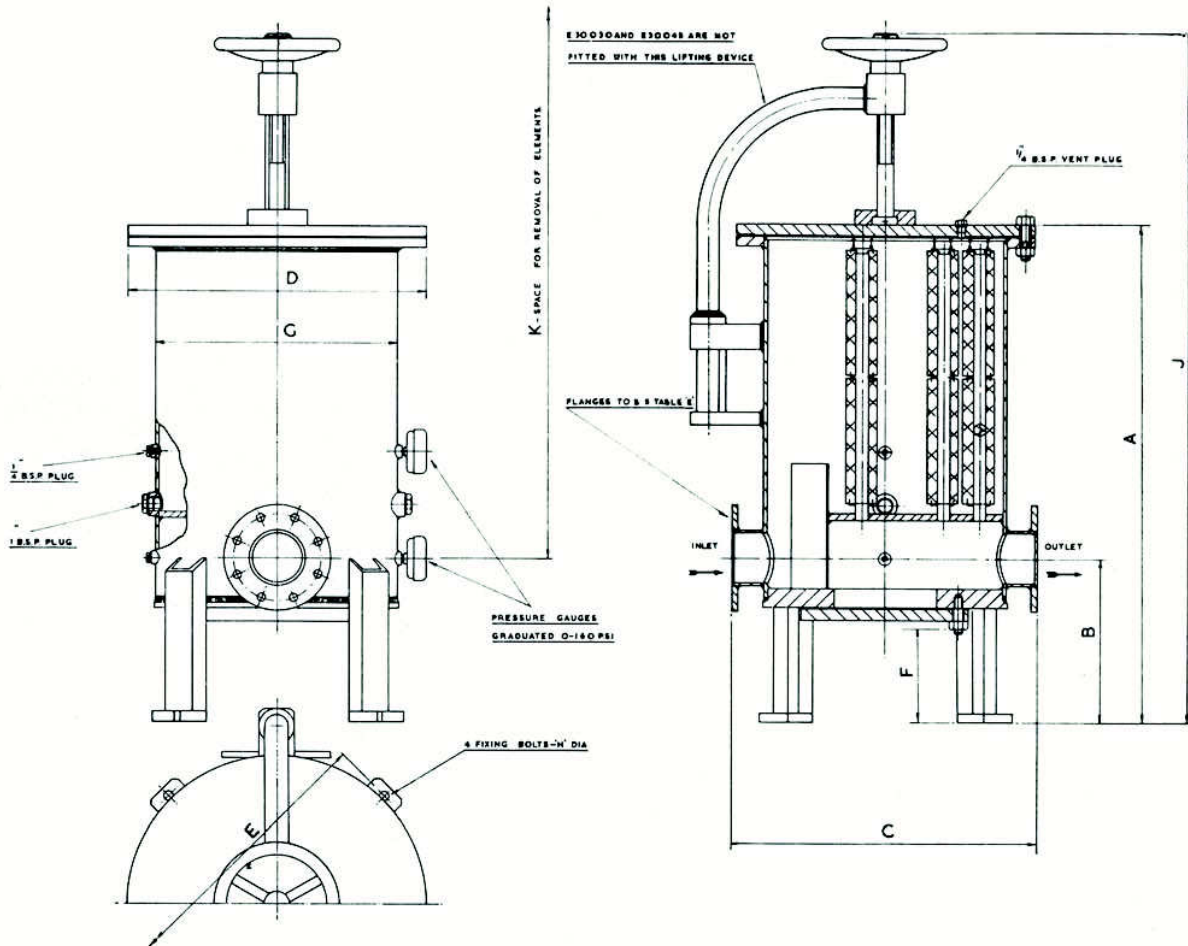
**DIMENSIONS** See drawing and table on page 2

**FLOW RATES** The flow rates listed below are for a Cotton filtering medium and are based on an initial pressure drop of 0.2 bar (3lb/in<sup>2</sup>) across a clean element.



Service	Type	Viscosity		Capacity							
		Seconds Redwood No. 1	Degrees Engler	Gallons Per Hour				Metres' Per Hour			
Water and Aqueous Solutions	E30030	—	—	Density Grading—Microns							
	E30045	—	—	1	5	10	20	1	5	10	20
	E40075	—	—	1100	5100	9000	9000	5.0	23.1	40.8	40.8
	E60108	—	—	1650	7650	13500	13500	7.5	34.7	61.3	61.3
	E60162	—	—	2750	12750	22500	22500	12.5	57.9	102.1	102.1
Viscous Liquids	E30030	50	1.75°	3960	18360	32400	32400	18.0	83.3	147.0	147.0
		250	8.1°	6000	27540	48600	48600	27.2	125.2	220.5	220.5
	E30045	50	1.75°	540	2340	4800	9000	2.5	10.6	21.8	40.8
		250	8.1°	105	480	900	1800	0.5	2.2	4.1	8.2
	E40075	50	1.75°	810	3510	7200	13500	3.7	15.9	32.7	61.3
		250	8.1°	157	720	1350	2700	0.7	3.3	6.1	12.3
	E60108	50	1.75°	1350	5850	12000	22500	6.1	26.5	54.4	102.1
		250	8.1°	262	1200	2250	4500	1.2	5.4	10.2	20.4
	E60162	50	1.75°	1944	8420	17280	32400	8.8	38.2	78.4	147.0
		250	8.1°	378	1728	3240	6480	1.7	7.8	14.7	29.4
	50	1.75°	2016	12630	25920	48600	13.2	57.3	117.6	220.5	
	250	8.1°	537	2502	4860	9720	2.6	11.8	22.1	44.1	

**auto-klean® filter anything that flows**



**TYPES E30030, E30045, E40075, E60108, E60162**

Type	Elements			Dimensions								Body Capacity	Weight		
	Number	Positioned Up	Round	A	B	C	D	E	F	G	H			J	K
<b>Inches</b>															
E30030	30	2	15	38 $\frac{1}{2}$	12	19 $\frac{1}{2}$	18 $\frac{3}{4}$	18 $\frac{3}{4}$	7 $\frac{1}{4}$	15	—	—	45 $\frac{3}{4}$	13	224
E30045	45	3	15	48 $\frac{1}{2}$	12	19 $\frac{1}{2}$	18 $\frac{3}{4}$	18 $\frac{3}{4}$	7 $\frac{1}{4}$	15	—	—	66	17	242
E40075	75	3	25	49 $\frac{1}{2}$	13	24	23 $\frac{1}{2}$	24	7 $\frac{1}{2}$	19	—	64 $\frac{1}{2}$	66	29	680
E60108	108	2	54	42	14	32	31	32	7 $\frac{1}{2}$	27	—	57 $\frac{1}{2}$	47	48	1134
E60162	162	3	54	52	14	32	31	32	7 $\frac{1}{4}$	27	—	67 $\frac{3}{4}$	67 $\frac{1}{2}$	63	1240
<b>Centimetres</b>															
E30030	30	2	15	97.2	30.5	49.5	47.6	47.6	18.4	38.1	1.6	—	116.2	59	102
E30045	45	3	15	122.9	30.5	49.5	47.6	47.6	18.4	38.1	1.6	—	167.6	77	110
E40075	75	3	25	125.7	33.0	61.0	59.7	61.0	19.1	48.3	1.9	164.5	167.6	132	308
E60108	108	2	54	106.7	35.6	81.3	78.7	81.3	18.4	68.6	1.9	146.7	119.4	218	514
E60162	162	3	54	132.1	35.6	81.3	78.7	81.3	18.4	68.6	1.9	172.1	171.5	286	562

# auto-klean® filtration limited

Engineers in Filtration

Unit 11a, Ascot Industrial Estate,  
Lenton Street,  
Sandiacre,  
Notts. NG10 5DJ, U.K.

Tel. 0870 421 4206  
Fax. 0870 421 4207

www.auto-kleanfiltration.co.uk  
E-Mail: sales@hse-ltd.com