

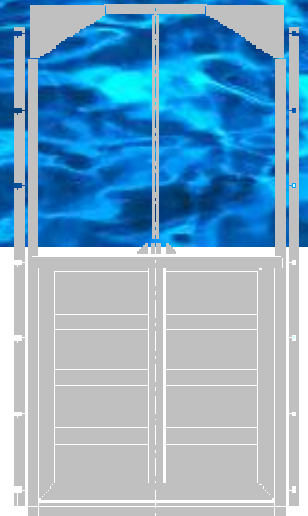
# industrial PENSTOCKS ltd

product brochure

product brochure

product brochure

product brochure



**Penstocks and Valves**

Issue 07-748



All industries today recognise industrial PENSTOCKS Ltd for its attitude toward customer requirements and its open approach to the design and manufacture of its Penstocks and Valves. The company can demonstrate a supply list both Internationally and here in the in the UK.

Since the company's conception industrial PENSTOCKS Ltd has chosen to concentrate on the manufacture and design of Penstocks and associated products in Stainless steel and Cast Iron. These early decisions have laid the foundations on which today's product range was built.

The industrial PENSTOCKS Ltd product range is continually growing and evolving to include larger and higher specification Penstocks. The company can demonstrate the ability to design Penstocks suitable for operating pressures of up to 10m on-off seating.

By combining traditional methods with state of art computer design software and never neglecting the basic principles which the industrial PENSTOCKS Ltd products derive, and coupled with a wealth of local experience, industrial PENSTOCKS Ltd ensure that high quality UK products are manufactured and delivered.

industrial PENSTOCKS Ltd can boast a wealth of collective product design, manufacturing and industry application knowledge. This experience together with products ranging from traditional cast iron construction to tailor made stainless steel means that industrial PENSTOCKS Ltd can supply products for inclusion in all fluid control applications.

All in all, industrial PENSTOCKS Ltd offers high quality SERVICE, PRODUCTS and DESIGN using the wealth of experience and knowledge, which gives customers the best possible solution to any future Penstock or Valve requirement.

Look forward to your enquiry by phone fax or e-mail contact us on

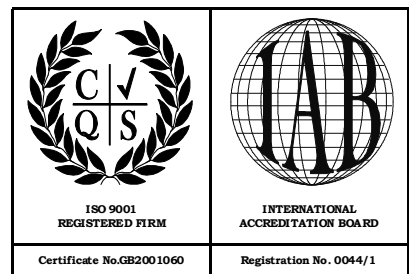
Phone +44-1384 458 411

Fax +44-1384 246 950

e-mail [sales@industrialpenstocks.co.uk](mailto:sales@industrialpenstocks.co.uk)

web site: [www.industrialpenstocks.co.uk](http://www.industrialpenstocks.co.uk)

| PAGE | ITEM   | DESCRIPTION/APPLICATION  |
|------|--|--|
| 2-3  | Welcome to and Profile                           |  |
| 4    | Contents   |  |
| 5-7  | Penstock selection                               | Description of selection elements.   |
| 8    | Penstock SG 3100 W                               | Wall mounting on off seat penstock for sea, waste and dirty water together with sewage applications. In 316 trim suitable for aggressive applications.   |
| 9    | Penstock SG 3100 C                               | Channel mounting penstock for sea, waste and dirty water together with sewage applications. In 316 trim suitable for aggressive applications.  |
| 10   | Penstock fig 108                                 | Wall mounting on seat penstock for sea, waste and dirty water together with sewage applications.   |
| 11   | Penstock materials                               | Technical data materials selection   |
| 12   | Flap Valve fig 812                               | Wall mounting flap valve for water sewage and land drainage applications.  |
| 13   | Flap Valve 5100 SG                               | Wall mounting flap valve for water sewage and land drainage applications.  |
| 14   | Disc flushing Valve fig 938<br>Sludge Valve 992. | Disc flushing Valve fig 938 Wall/Flange mounting for flushing out of channels water and sewage applications. Sludge Valve 992. For the invert draining of tanks water and sewage applications. |
| 15   | Floating Arms fig 934                            | Draw off applications in settled water applications.   |
| 16   | Hydrostatic Valve fig 674                        | For controlled flow in and out of tanks water and sewage applications.   |
| 17   | Handstops fig 710.                               | For the control of flow direction water sewage and municipal applications.   |
| 18   | Stop logs fig SG 6100                            | For the control of flow direction water sewage and municipal applications.   |
| 19   | Product range                                    | Overview of product range  |



When designing a Penstock it is necessary for a number of factors to be taken into account so to obtain the optimum performance from the finished product. These considerations include:-

1) Pressure, 2) Types of Invert, 3) Mounting types, 4) Method of operation, 5) Stem types

1) Pressure.

What pressures are the Penstock going to be subjected to? (refer to diagram for operating directions)

On Seating Pressure

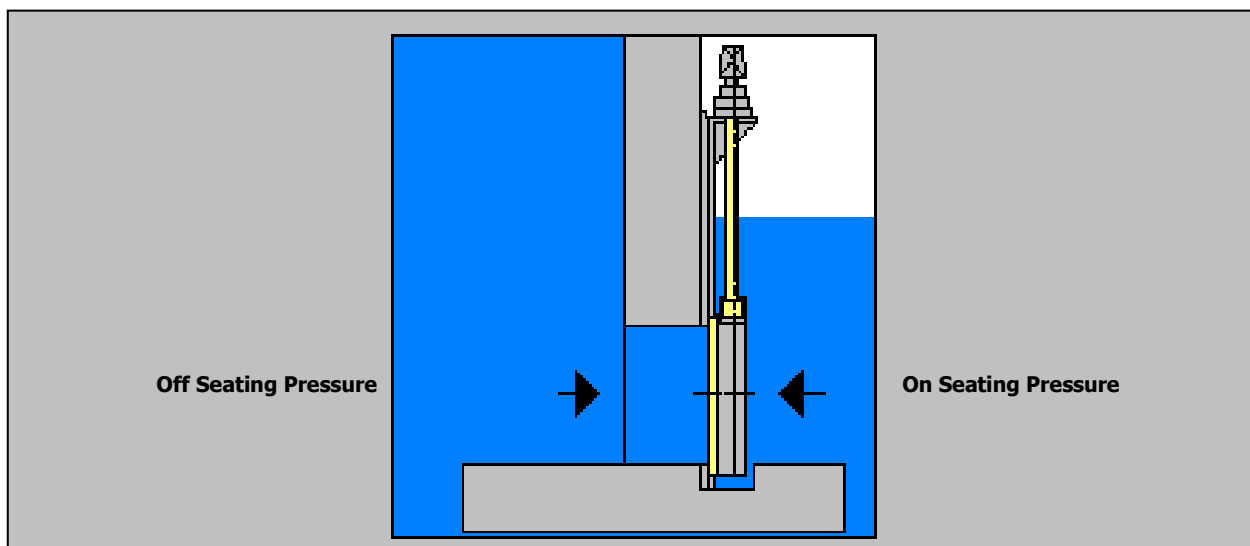
(Fluid forces the penstock onto wall)

Off Seating Pressure

(Fluid forces penstock away from wall)

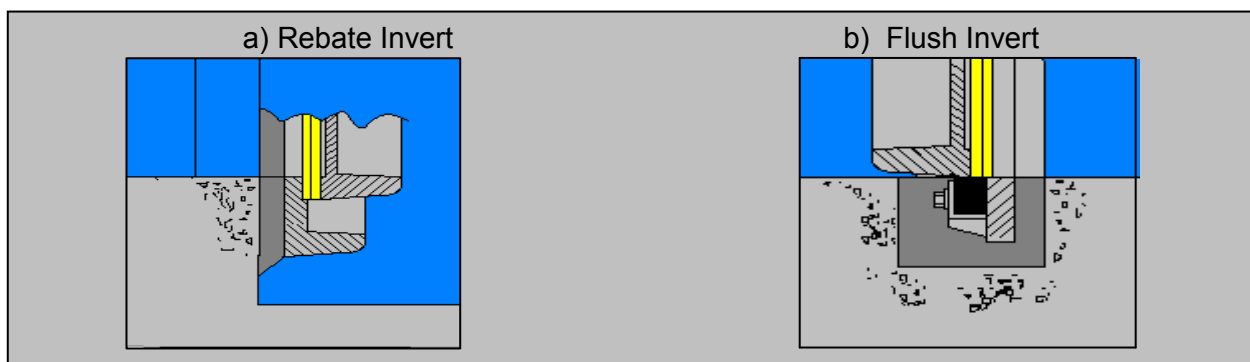
On/Off Seating Pressure

(Fluid forces can be both ways)



## 2) Types of invert

These fall into two categories the rebate and flush. A rebate invert is used when it is specified as a requirement for invert fixing bolts to be incorporated. Flush inverts offer a smooth passage at the invert and remove any possible debris traps.



### 3) Mounting Types

The method of fixing the Penstock will depend upon the design requirements, the main options are as follows:-

Wall Mounting.

Diagram (a) shows a wall mounting penstock, the Penstock fixed to the wall by means of expanding or resin type anchor bolts.

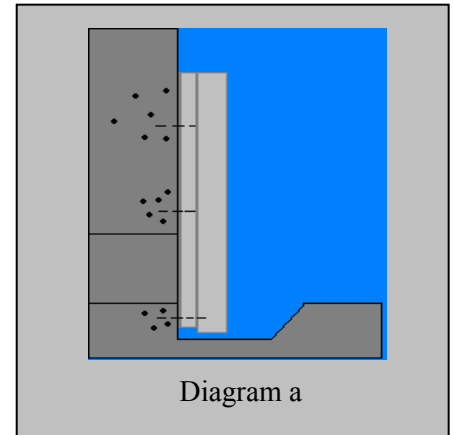


Diagram a

Channel Rebate Mounting.

Diagram (b) shows a channel rebate mounted penstock. The penstock is specifically designed to be mounted in to prepared rebates.

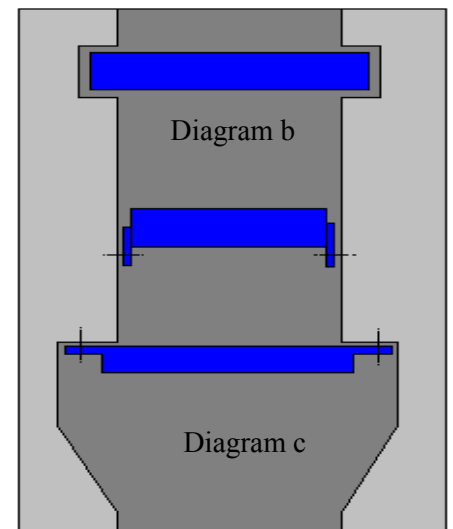


Diagram b

Wall Fixed within Channel.

Diagram (c) shows a penstock when it is mounted to the inside of the channel. This method is utilised when a channel does not have rebates for conventional channel rebate mounting or it is pure replacement of existing.

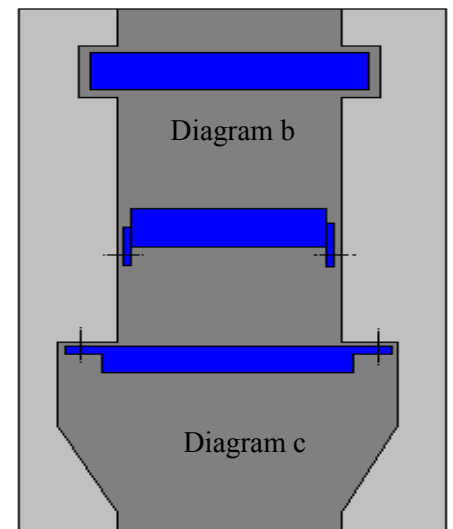


Diagram c

### 4) Operating Methods

Industrial PENSTOCKS is able to offer many modes of operating gear including manual and actuated options. Diagrams (a) and (b) below illustrate some of these options for both rising and non-rising stem applications. These include cap for T key, electric actuator, manual gearbox, and handwheel. Note weir type Penstocks are also available.

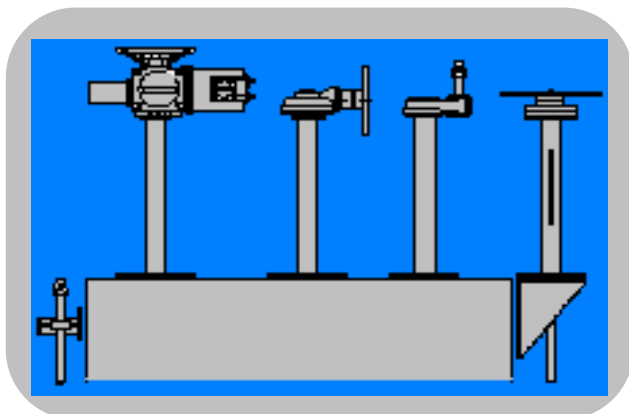


Diagram a

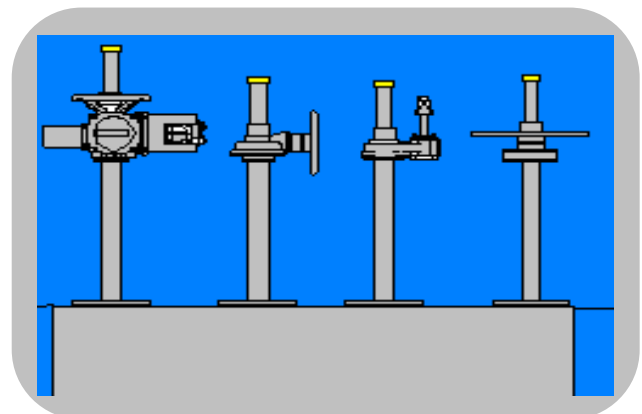


Diagram b



### 5) Stem Types Rising or Non-Rising

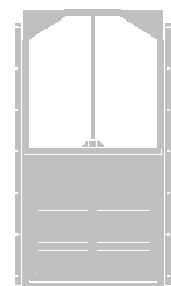
When considering the operation of a Penstock the nature of the stem must be specified. This falls into two categories- rising or non-rising. The recommended stem type under BS7775 is rising. If we look at rising stem applications it removes the need to drain locations so to undertake maintenance of the screwed stem. It will provide a usable tolerance by removing any potential dimensional problems against civil works regarding invert to floor levels. The rising stem offers lower torques thus reducing the operator torque and increases the working life of the Product. If however due to restricted headroom then non rising is to be specified.

#### Non-Rising Stems.

A threaded spindle nut is located in the penstock door. The screwed stem is rotated and works through the nut thus raising or lowering the spindle nut and the door. The screwed portion of the stem is within the penstock frame and is subject to submersion. The thrust for this type of operation is taken directly on the penstock frame.

#### Rising Stems.

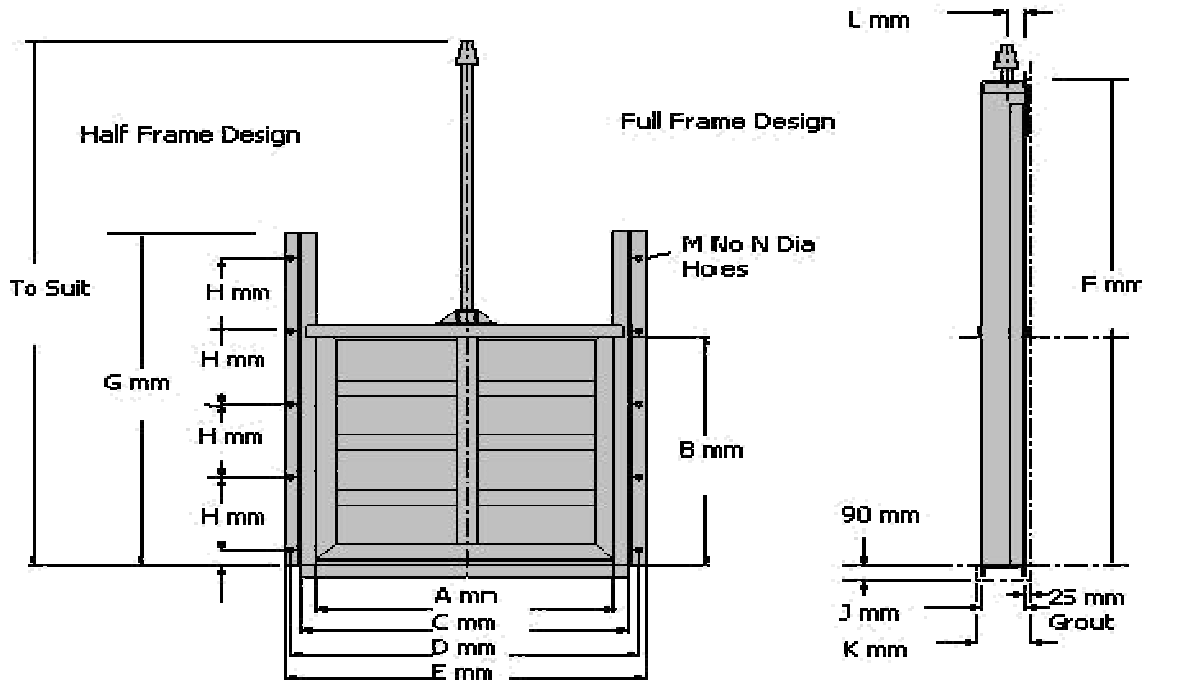
A threaded spindle nut is located in the operating equipment and is sometimes referred to as **RISING NON-ROTATING TYPE** . The nut is rotated and the screwed stem works through the nut thus raising or lowering the stem and the door. The screwed portion of the stem is generally not subject to submersion and is readily accessible for maintenance and lubrication. The thrust for this type of operation can be taken directly on the penstock frame or remotely to civil works.



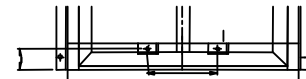
# SG 3100W Penstock.

# industrial PENSTOCKS Ltd

**Dimensions :** 5 M ON 4 M OFF SEAT PRESSURE. Fig SG 3100W Wall Mounting Penstock. A heavier duty 10m unit can be supplied details supplied upon request.



Additional fixings for non-recessed invert applications can be provided  
Weir type or downward opening types are available



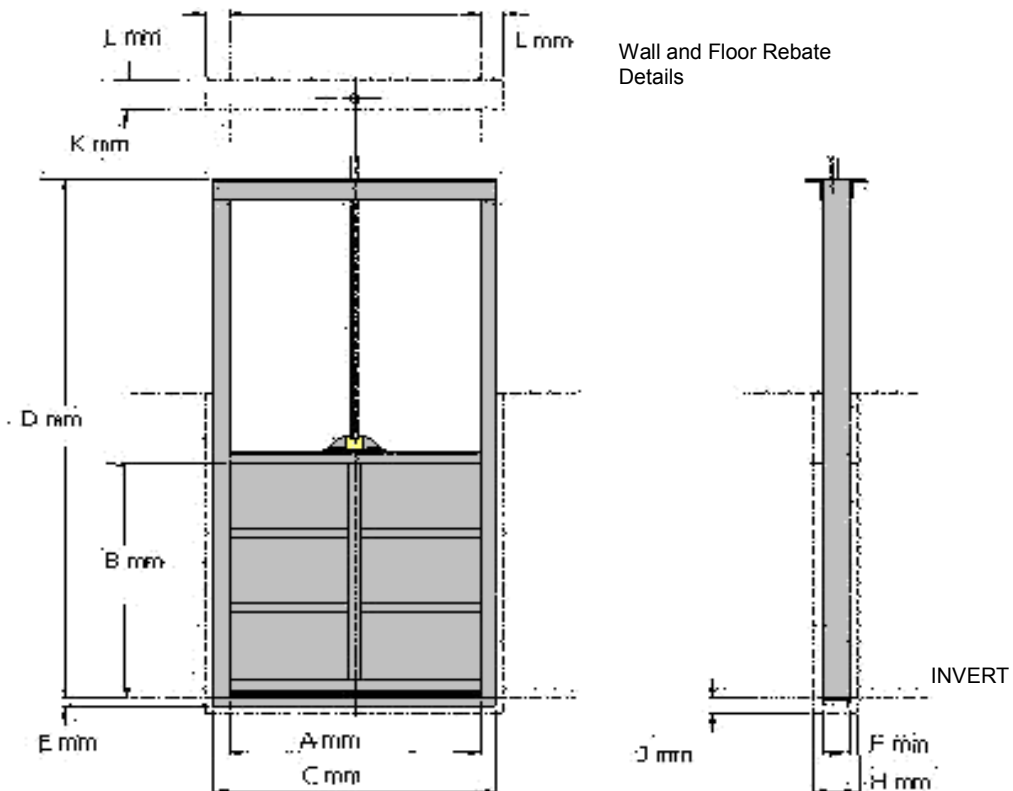
| A    | B    | C    | D    | E    | F    | G    | H   | J   | K   | L  | M  | N  |
|------|------|------|------|------|------|------|-----|-----|-----|----|----|----|
| 500  | 500  | 652  | 712  | 752  | 1154 | 750  | 450 | 152 | 200 | 59 | 6  | 15 |
| 600  | 600  | 752  | 812  | 852  | 1354 | 950  | 550 |     |     | 59 | 6  |    |
| 700  | 700  | 852  | 912  | 952  | 1554 | 1050 | 650 |     |     | 59 | 6  |    |
| 800  | 800  | 952  | 1012 | 1052 | 1754 | 1250 | 500 |     |     | 64 | 8  |    |
| 900  | 900  | 1052 | 1112 | 1152 | 1954 | 1350 | 565 |     |     | 64 | 8  |    |
| 1000 | 1000 | 1152 | 1222 | 1272 | 2161 | 1660 | 475 |     |     | 74 | 10 | 20 |
| 1100 | 1100 | 1252 | 1322 | 1372 | 2361 | 1760 | 525 | 74  | 10  |    |    |    |
| 1200 | 1200 | 1352 | 1422 | 1472 | 2562 | 1860 | 575 | 76  | 10  |    |    |    |
| 1300 | 1300 | 1452 | 1522 | 1572 | 2762 | 2000 | 500 | 76  | 12  |    |    |    |
| 1400 | 1400 | 1552 | 1622 | 1672 | 2362 | 2160 | 450 | 178 | 230 | 86 | 14 | 25 |
| 1500 | 1500 | 1652 | 1752 | 1812 | 3193 | 3070 | 485 |     |     | 86 | 14 |    |
| 1600 | 1600 | 1752 | 1852 | 1912 | 3393 | 2500 | 515 | 203 | 260 | 97 | 14 |    |
| 1800 | 1800 | 1952 | 2052 | 2112 | 3793 | 2660 | 500 |     |     | 97 | 16 |    |
| 2000 | 2000 | 2152 | 2252 | 2312 | 4193 | 3080 | 490 |     |     | 97 | 18 |    |



# SG 3100C Penstock.

# industrial PENSTOCKS Ltd

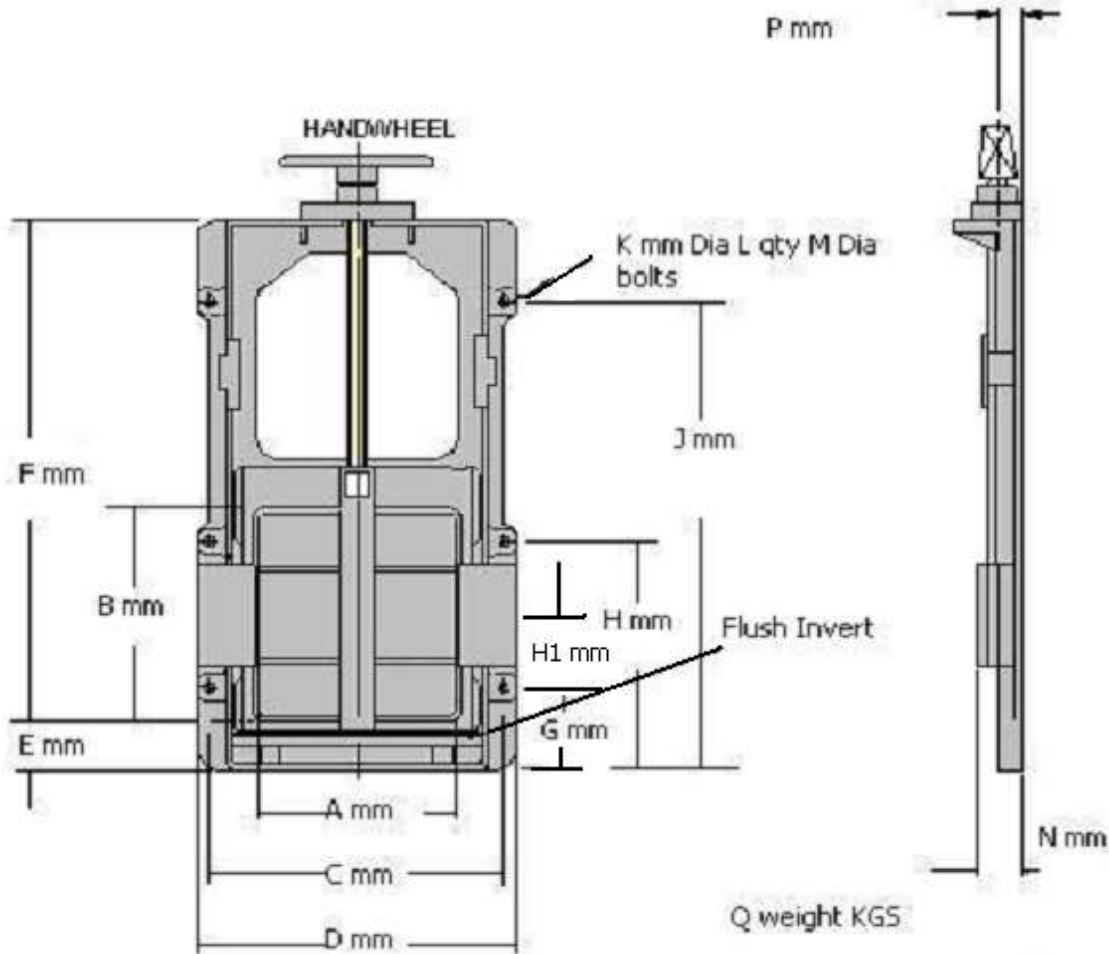
**Dimensions:** DOOR DEPTH PRESSURE. Fia SG 3100C Channel Mounting Penstock



| A    | B    | C    | D    | E  | F   | G   | H   | J  | K   | L   |
|------|------|------|------|----|-----|-----|-----|----|-----|-----|
| 500  | 500  | 652  | 1148 |    |     |     |     |    |     |     |
| 600  | 600  | 752  | 1348 |    |     |     |     |    |     |     |
| 700  | 700  | 852  | 1548 |    |     |     |     |    |     |     |
| 800  | 800  | 952  | 1748 | 76 | 152 | 212 | 200 | 90 | 260 | 100 |
| 900  | 900  | 1052 | 1948 |    |     |     |     |    |     |     |
| 1000 | 1000 | 1152 | 2148 |    |     |     |     |    |     |     |
| 1100 | 1100 | 1252 | 2361 |    |     |     |     |    |     |     |
| 1200 | 1200 | 1352 | 2561 |    |     |     |     |    |     |     |
| 1300 | 1300 | 1452 | 2761 |    |     |     |     |    |     |     |
| 1400 | 1400 | 1552 | 2961 |    |     |     |     |    |     |     |
| 1500 | 1500 | 1652 | 3186 |    |     |     |     |    |     |     |
| 1600 | 1600 | 1752 | 3386 | 76 | 178 | 238 | 230 | 90 | 290 | 100 |
| 1800 | 1800 | 1952 | 3786 |    |     |     |     |    |     |     |
| 2000 | 2000 | 2152 | 4186 |    |     |     |     |    |     |     |

**Fig 108 Cast Iron Penstock.**

**Dimensions:** 6M ON SEAT 3M OFF SEAT PRESSURE. Fig 108/30 Wall Mounting Penstock



| A-B | C   | D   | E  | F    | G  | H1  | H   | J    | K  | L | M  | N   | O   | Q   |
|-----|-----|-----|----|------|----|-----|-----|------|----|---|----|-----|-----|-----|
| 150 | 300 | 345 | 55 | 399  | 55 | -   | 215 | 365  | 15 | 6 | 12 | 115 | 67  | 22  |
| 200 | 350 | 395 | 55 | 520  | 55 | -   | 235 | 435  | 15 | 6 | 12 | 115 | 67  | 38  |
| 225 | 375 | 420 | 55 | 549  | 55 | -   | 255 | 495  | 15 | 6 | 12 | 115 | 67  | 42  |
| 250 | 400 | 445 | 55 | 629  | 55 | -   | 420 | 649  | 15 | 6 | 12 | 54  | 65  | 43  |
| 300 | 450 | 495 | 55 | 729  | 55 | -   | 440 | 694  | 15 | 6 | 12 | 54  | 65  | 54  |
| 400 | 565 | 619 | 75 | 953  | 75 | -   | 485 | 995  | 15 | 6 | 12 | 130 | 97  | 78  |
| 450 | 615 | 670 | 75 | 1055 | 75 | 230 | 230 | 1085 | 15 | 8 | 12 | 130 | 97  | 110 |
| 500 | 665 | 720 | 75 | 1155 | 75 | 225 | 225 | 1130 | 15 | 8 | 12 | 135 | 97  | 128 |
| 600 | 765 | 820 | 75 | 1355 | 75 | 305 | 305 | 1390 | 15 | 8 | 12 | 140 | 102 | 149 |

All our Penstocks can be manufactured in the following trim and with the coating systems

| Penstock Component          | Material           | British Standard  |
|-----------------------------|--------------------|-------------------|
| Frames                      | Mild Steel         | BS4360 Gr43A      |
|                             | Stainless Steel    | BS970 Gr304/Gr316 |
|                             | Cast Iron          | BS1452 Gr220      |
| Doors & Wedges              | HDPE Solid plastic |                   |
|                             | Stainless Steel    | BS970 Gr304/316   |
|                             | Cast Iron          | BS1452 Gr220      |
| Operating Stems             | Stainless Steel    | BS970 Gr316       |
| Thrust Nuts & Drive Sleeves | Stainless Steel    | BS970 Gr316       |
|                             | Gunmetal           | BS1400 GrLG2      |
|                             | Aluminium Bronze   | BS1400 AB1        |
|                             | High Tensile Brass | BS1400 HTB1       |
| Thrust Housings, Caps       | Stainless Steel    | BS970 Gr304/316   |
|                             | Cast Iron          | BS1452 Gr220      |
| Handwheels                  | Cast Iron          | BS1452 Gr220      |
|                             | Cast Aluminium     | BS1490            |
| Assembly Fasteners          | Stainless Steel    | BS970 Gr A2, A4   |
| Frame Gate Seal             | Phosphor Bronze    | BS2874 PB102      |
| Flush Invert                | EPDM               | ASTM2000          |
| Fixing Bolts                | Stainless Steel    | BS970 Gr A2, A4   |

**Painting Guidelines.**

No consideration is required for the paint coating of the SG range of penstocks, one only consideration one has is to think of the floor pillar and coping brackets, as all doors and frames are stainless steel throughout and therefore require no further treatment to their natural finish. (Aesthetic finishes can be applied when required)

It is normal practice to either galvanise or flame zinc spray mild steel to achieve a good base protection prior to epoxy coating.

Where epoxy is specified it is preferable to blast clean, zinc spray, etch prime and then apply the epoxy coating to the desired DFT.

For potable water applications it is wise to seek advice from the DWI for approved coatings or follow, the customers specification which will normally state the requirements for DFT, number of coats etc.

Where no particular specifications are evident, the following guidelines can be applied:

Mild Steel:

Sewage - Blast clean, HD galvanise to BS729.

Blast clean, zinc spray, etch prime, coal tar epoxy to 150 microns DFT.

Potable - Blast clean, zinc spray, etch prime, bitumen to 150 microns DFT.

Blast cleaning should be to Swedish Standard SA2.5 Zinc spraying to Zn4 - 100 microns nominal, 75 microns minimum

Fig 5100 SG Flap Valve.

**OVERVIEW**

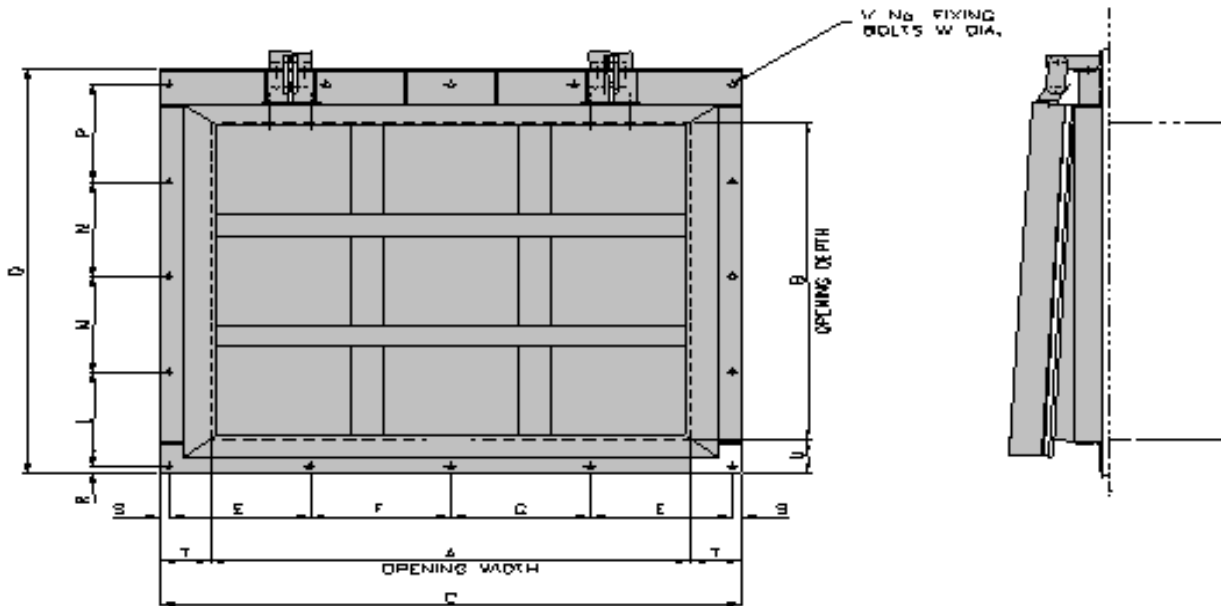
Industrial PENSTOCKS Ltd manufacture a comprehensive range of Flap Valves The valves are supplied with either square or rectangular aperture's, with single or as an option double door's. The Flap valve is designed for flow of surface water drainage preventing reverse flow conditions stopping flood damage.

**CONSTRUCTION**

**Frame, Door, Hinge Brackets, and Hinge Links** . Stainless steel to BS970 gr 304/316, impact resistant and designed to suit customers pressure specifications. (Alternative tropical hard woods)

**Seating Faces.** EPDM.

**Hinge Pins.** Stainless steel to BS970 gr 304. StSt 316 /phosphor bronze to BS2874 PB102.



| A-B  | C    | D    | E   | F   | G   | L   | M   | N   | P   | R  | S  | T   | U   | V  | W  |
|------|------|------|-----|-----|-----|-----|-----|-----|-----|----|----|-----|-----|----|----|
| 500  | 716  | 822  | 328 | -   | -   | 358 | -   | -   | 358 | 30 | 30 | 108 | 108 | 8  | 15 |
| 600  | 816  | 922  | 378 | -   | -   | 408 | -   | -   | 408 | 30 | 30 | 108 | 108 | 8  | 15 |
| 700  | 916  | 1022 | 428 | -   | -   | 458 | -   | -   | 458 | 30 | 30 | 108 | 108 | 8  | 15 |
| 800  | 1016 | 1122 | 478 | -   | -   | 508 | -   | -   | 508 | 30 | 30 | 108 | 108 | 8  | 15 |
| 900  | 1116 | 1222 | 528 | -   | -   | 558 | -   | -   | 558 | 30 | 30 | 108 | 108 | 8  | 15 |
| 1000 | 1270 | 1352 | 600 | -   | -   | 620 | -   | -   | 620 | 35 | 35 | 135 | 135 | 8  | 20 |
| 1100 | 1370 | 1452 | 433 | 434 | -   | 670 | -   | -   | 670 | 35 | 35 | 135 | 135 | 10 | 20 |
| 1200 | 1470 | 1552 | 467 | 466 | -   | 480 | -   | 480 | 480 | 35 | 35 | 135 | 135 | 12 | 20 |
| 1300 | 1570 | 1652 | 500 | 500 | -   | 513 | -   | 513 | 513 | 35 | 35 | 135 | 135 | 12 | 20 |
| 1400 | 1670 | 1752 | 533 | 534 | -   | 547 | -   | 547 | 547 | 35 | 35 | 135 | 135 | 12 | 20 |
| 1500 | 1770 | 1852 | 567 | 566 | -   | 580 | -   | 580 | 580 | 35 | 35 | 135 | 135 | 12 | 20 |
| 1600 | 1920 | 1977 | 617 | 616 | -   | 622 | -   | 622 | 622 | 35 | 35 | 160 | 160 | 12 | 25 |
| 1800 | 2120 | 2177 | 513 | 512 | 512 | 517 | 517 | 516 | 516 | 35 | 35 | 160 | 160 | 16 | 25 |
| 2000 | 2320 | 2377 | 563 | 562 | 562 | 567 | 567 | 566 | 566 | 35 | 35 | 160 | 160 | 16 | 25 |

## DI 812 Flap Valve

### CONSTRUCTION

**Frame - Door - Hinge / Door Brackets** Manufactured in Ductile Iron

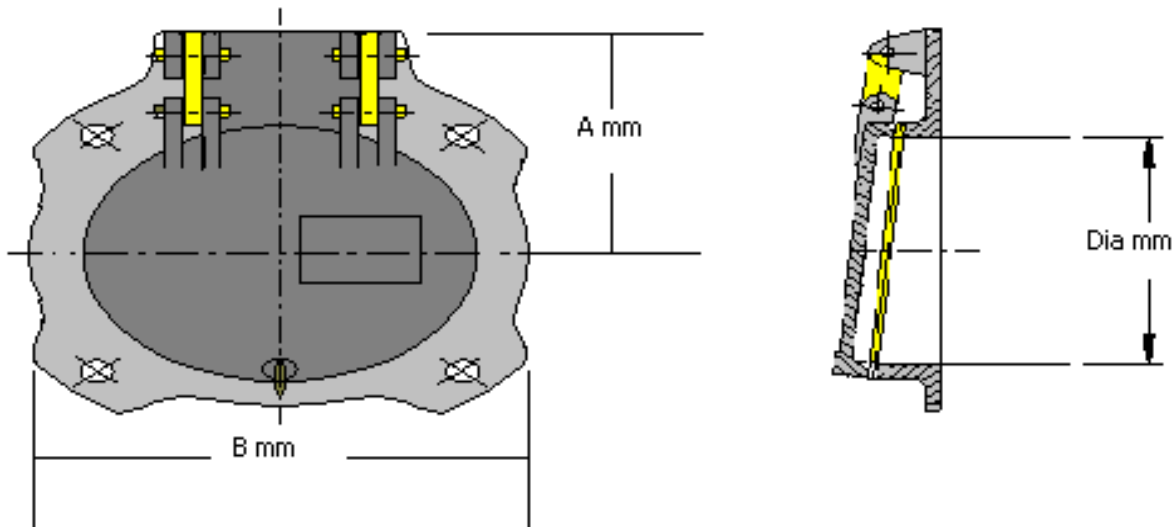
**Hinge Links** - Manufactured in Phosphor bronze

**Hinge Pins** - Stainless steel to BS 970 Gr 316

**Seating Faces** - Manufactured in phosphor bronze, machined to close tolerances.

**Size Range** - 80mm up to 1000mm Dia

**Coating** - Frame and door coated with high build epoxy as standard. Suited for the most aggressive duties



| Dia mm | B mm   | A mm  |
|--------|--------|-------|
| 80mm   | 200mm  | 135mm |
| 100mm  | 220mm  | 145mm |
| 150mm  | 285mm  | 175mm |
| 200mm  | 340mm  | 195mm |
| 225mm  | 370mm  | 210mm |
| 250mm  | 400mm  | 220mm |
| 300mm  | 455mm  | 240mm |
| 350mm  | 520mm  | 322mm |
| 375mm  | 550mm  | 335mm |
| 400mm  | 580mm  | 370mm |
| 450mm  | 640mm  | 440mm |
| 500mm  | 715mm  | 465mm |
| 525mm  | 740mm  | 478mm |
| 600mm  | 840mm  | 515mm |
| 700mm  | 910mm  | 600mm |
| 750mm  | 970mm  | 625mm |
| 800mm  | 1025mm | 650mm |
| 900mm  | 1125mm | 700mm |
| 1000mm | 1255mm | 750mm |

**Fig 938 Disc Flushing Valve.**

**OVERVIEW**

Industrial PENSTOCKS Ltd manufacture a range of Disc Flushing Valves which will be designed to suit a variety of applications and industries from industrial to the municipal water and sewage

**CONSTRUCTION**

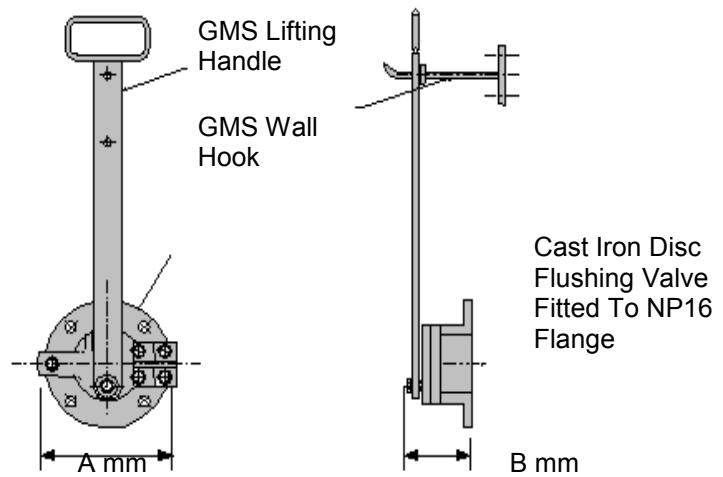
**Body, Wedge and Disc** - Cast iron to BS1452 Gr 220. Flange or wall mounting applications. – coated with a high build bitumen solution. The valve as standard comes ready for wall or flange mounting. The body has a reduced quantity of bolt holes conforming to the PCD and spacing of BS4504 NP16.

**Seating Faces** - Gun-Metal to BS1400 LG2, securely fixed to body and door.

**Lifting Handle Wall Hook** - Manufactured in mild steel to BS970 Gr EN3A with locating holes for intermediate door positions. Alternative in stainless steel.

**Range** - Manufactured in sizes from 80mm through to 300mm. It is not recommended that sizes larger are used due to H+S.

| Dia | A mm | Bmm |
|-----|------|-----|
| 80  | 200  | 76  |
| 100 | 220  | 76  |
| 150 | 285  | 86  |
| 225 | 380  | 86  |
| 300 | 455  | 86  |



**Fig 992 Sludge Valve**

**CONSTRUCTION**

**Body Disc Bridge** - Manufactured in cast iron to BS1452 Gr 220. Designed for flange mounting applications. Machined recess for sealing face. Coated with a high build bitumen solution

**Seating Faces** - Gun-Metal to BS1400 LG2, securely fixed to body and door and having a bevelled seating face for accurate sealing.

**Operating Nut** - Manufactured in bronze. Securely fixed to bridge.

**Operating Stem** - Rising configuration as standard, manufactured in stainless steel to BS970 Gr 303.

| Dia | A mm | B mm |
|-----|------|------|
| 100 | 20   | 95   |
| 150 | 20   | 95   |
| 200 | 20   | 95   |
| 300 | 25   | 95   |
| 500 | 30   | 95   |

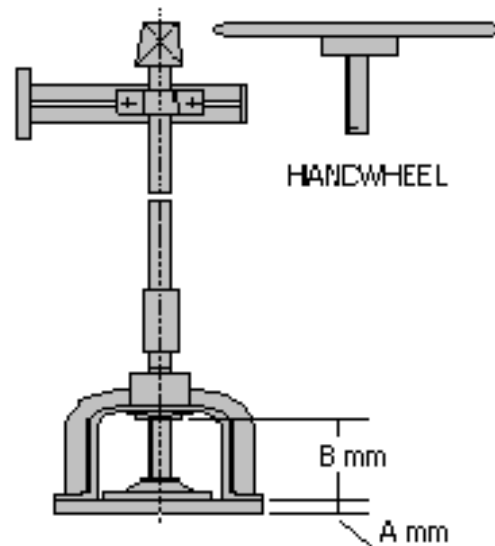


Fig 934 Floating Arms.

**OVERVIEW**

Industrial PENSTOCKS Ltd manufacture a range of Floating and Decanting Arms with options on the Floating arms for single or twin float, scum boxes, constant discharge single or twin orifice plates.

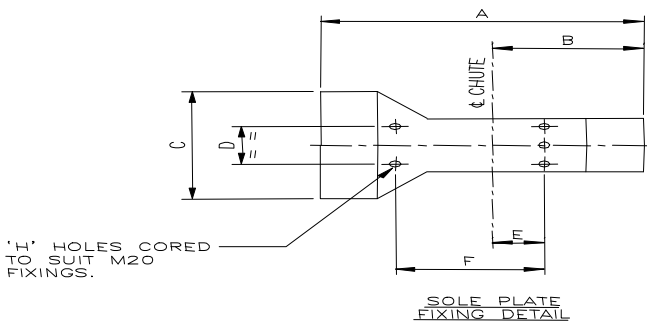
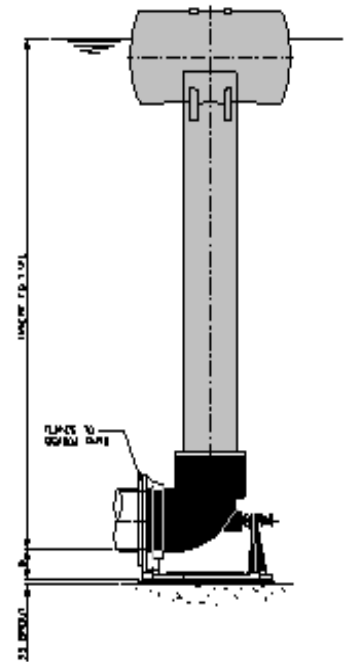
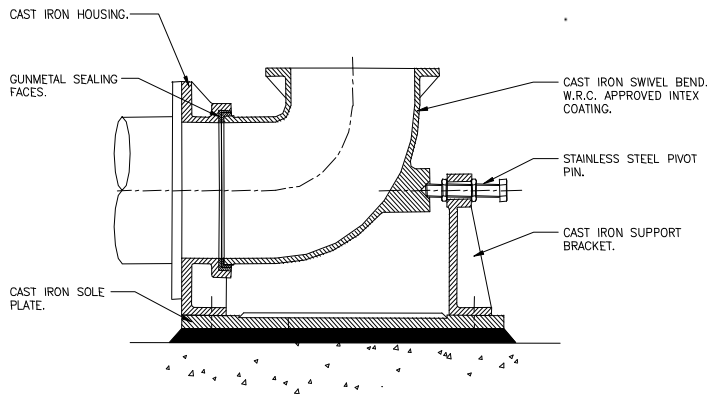
**CONSTRUCTION**

**Swivel Bend Body, Swivel Bend, Swivel Bend Bracket and Sole Plate** - Manufactured in cast iron to BS1452 Gr 220 with outlet flange drilled to BS4504 NP16.

**Swivel Bend Seals** - Manufactured from Gun-Metal to BS1400 LG2.

**Float** - manufactured in mild steel and galvanised to BS729, complete with float plugs to facilitate accurate setting of float level.

**Arm** - Manufactured in st st 304/316



| Dia | A   | B   | C   | D   | E   | F   | H |
|-----|-----|-----|-----|-----|-----|-----|---|
| 100 | 370 | 230 | 240 | 180 | 65  | 135 | 3 |
| 150 | 385 | 200 | 350 | 290 | 80  | 170 | 3 |
| 200 | 575 | 320 | 340 | 140 | 105 | 300 | 3 |
| 250 | 650 | 345 | 400 | 140 | 105 | 300 | 4 |
| 300 | 635 | 370 | 410 | 140 | 60  | 300 | 4 |



**Fig 674 Hydrostatic Valve.**

Industrial PENSTOCKS Ltd manufacture a range of Hydrostatic Valves offering direct lift bellmouth outlet for both manual and electric operation. The Fig 674 Hydrostatic valve is designed to control flow of piped media into and out of tanks, in particular regulating flows to filter beds and desludging of humus tanks and activated sludge.

**Material Specification.**

**Base Cylinder** - Manufactured in ductile iron to EN545. Length calculated according to customers levels.

**Bellmouth outlet and Bridge-** Manufactured in cast iron to BS1452 Gr 220, secured to stem with stainless steel pin.

**Sliding Tube-** Manufactured from PVC to BS3505 attached to outlet to provide level adjustment.

**Gland Sealing Assembly-** Manufactured in cast iron to BS1452 Gr 220 with graphite impregnated greasy hemp gland packing to BS4371.

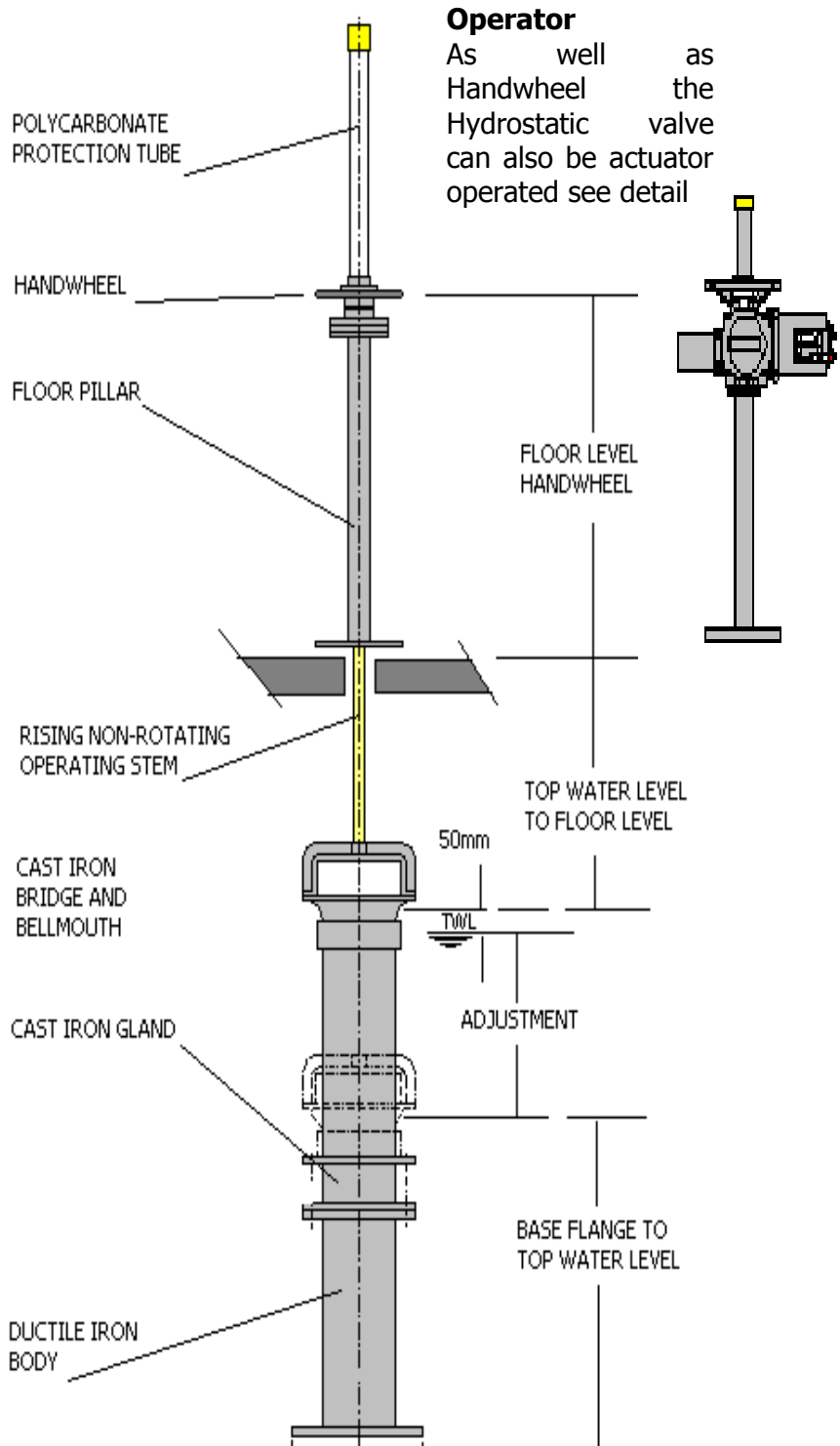
**Assembly Fasteners-** Stainless steel.

**Operating Stem-Rising NON ROTATING** stem in stainless steel.

**Pillar-** Galvanized mild steel St St 304-316 or Cast Iron

**Size Range**

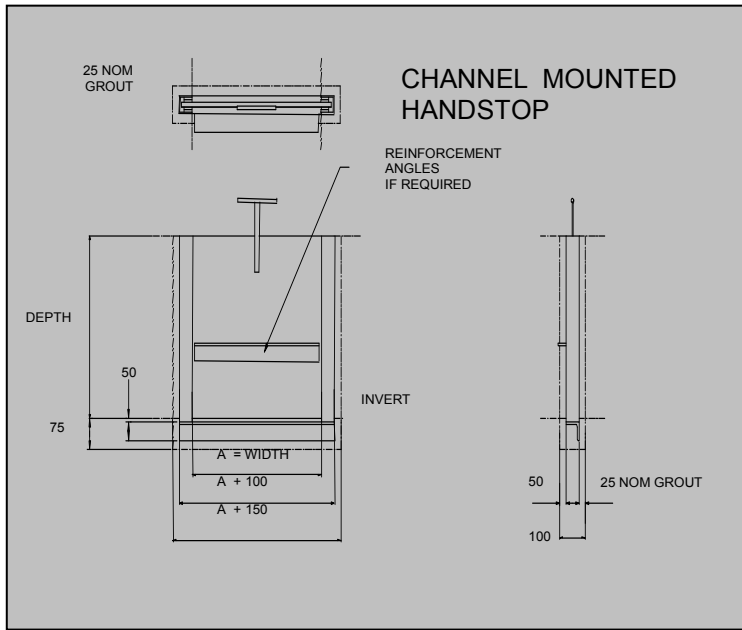
- 100mm, 150mm
- 200mm, 250mm
- 300mm, 400mm
- 450mm, 500mm



## Fig 710 Handstops.

### OVERVIEW

Industrial PENSTOCKS Ltd manufacture a comprehensive range of SG Handstops, in square, rectangular and semi-circular aperture's, together with a wide range of trim levels and designs to suit a wide variety of applications and industries. The Handstop is available in sizes up to 900mm, over this size Penstocks or Stop logs are recommended.



### CONSTRUCTION

**Frame** - Welded Mild Steel construction to BS 4360 43A. Coating by means of galvanising to Swedish Standard SA2.5 or Zinc sprayd, etch primed and epoxy painted.

**Frame Seals** - Parallel resilient EPDM seals bonded to frame sides, with neoprene flush invert seal to invert section.

**Door** - Solid PVC construction complete with stainless steel reinforcement angles if required.

**Lifting Handles** - There is a choice between slotted lifting holes within the UPVC door or lifting handles manufactured in Gr 304 stainless steel bolted through the door.

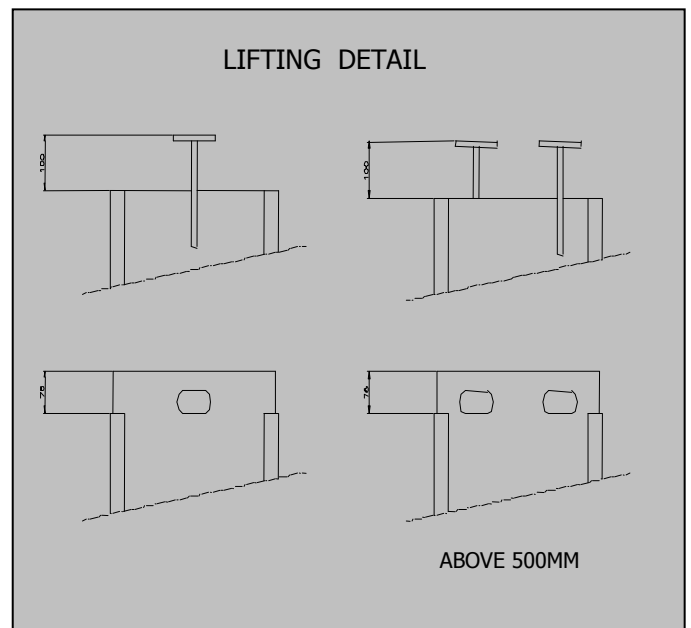
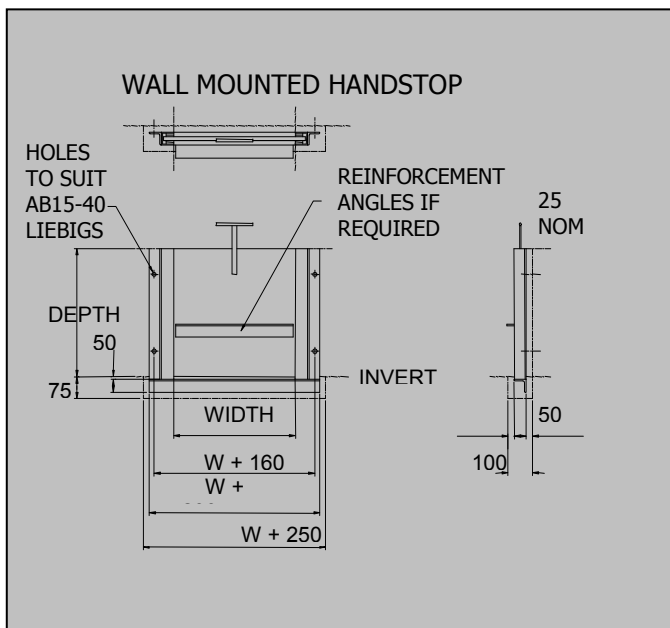
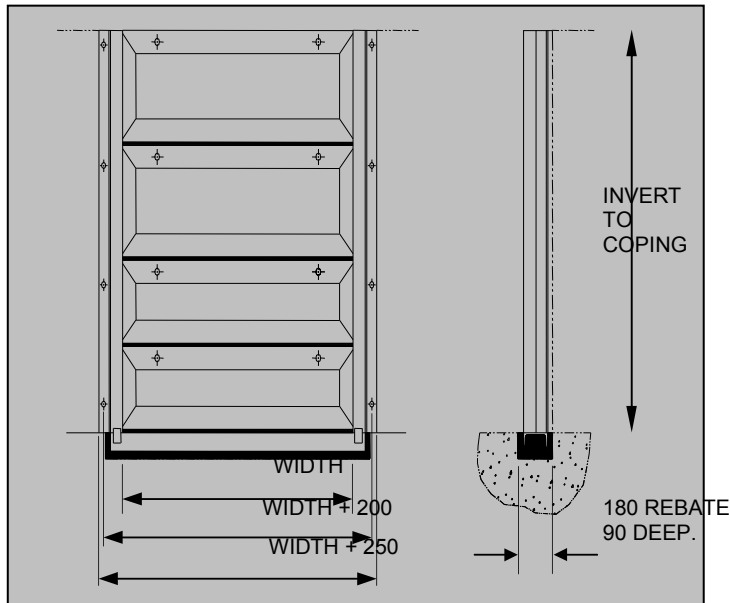
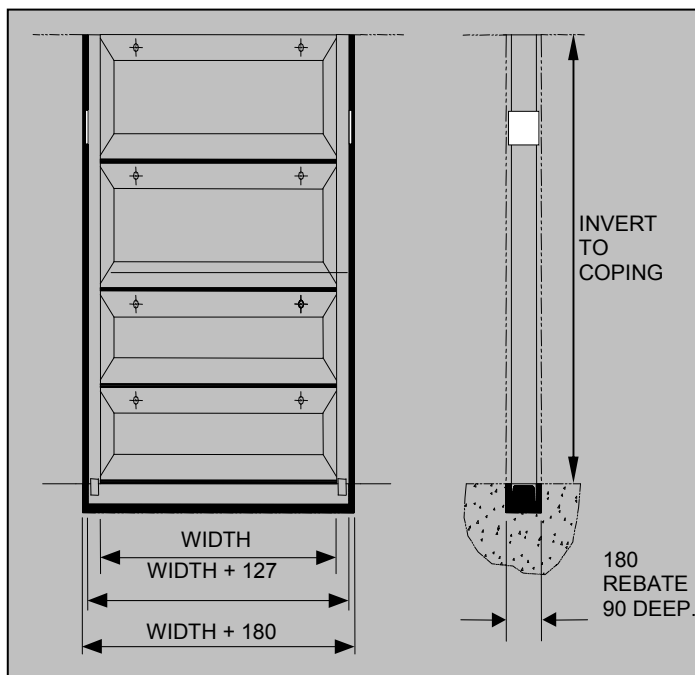


Fig 6100 Stoplogs.

### WALL MOUNTED STOPLOG



### CHANNEL MOUNTED STOPLOG



#### Lifting Arrangements.

A lifting pole system is usually adequate for raising and lowering smaller stoplogs, Due to SWL it is recommended that a lifting beam be used with a davit arm located near to the stoplog.

#### OVERVIEW

Industrial PENSTOCKS Ltd manufacture a range of SG Stoplogs in square and rectangular aperture's which are suitable for a wide variety of applications and industries. The product can be fitted in both new and old applications. The Fig 6100 Wall and Channel Mounting Stoplogs are used mainly for weiring and isolation duties. Widely utilised in the isolation of screens and other key areas for maintenance within the works.

#### CONSTRUCTION

**Stoplog Frame** - Manufactured in mild steel to BS970 Pt1 Gr43a with parallel resilient seals bonded to frame sides and neoprene invert seal.

**Coating** - choice of Galvanized or paint system Galvanizing to Swedish standard SA2.5

Paint System, Blast clean, zinc spray, etch primer and epoxy top coat.

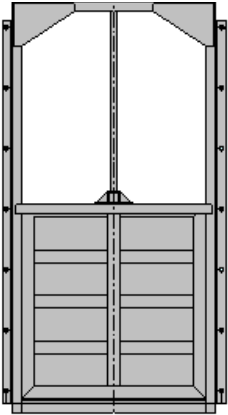
Stainless steel frames can be supplied on request, to BS970 Pt1 gr 304 /316.

**Stoplog** - Manufactured in stainless steel to BS970 Pt1 Gr 304/316 with stainless steel lifting pins and mechanically fixed EPDM interlog seals. Aluminium; HDPE solid plastic and tropical hard woods can be supplied on request.

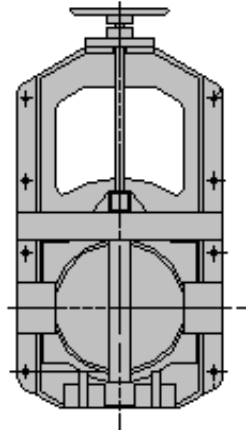
**Product Range.**

**industrial PENSTOCKS Ltd**

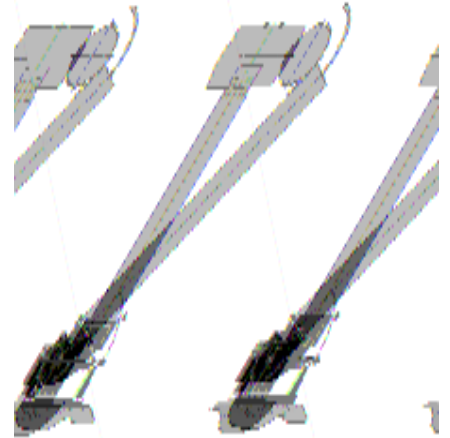
SG 3100



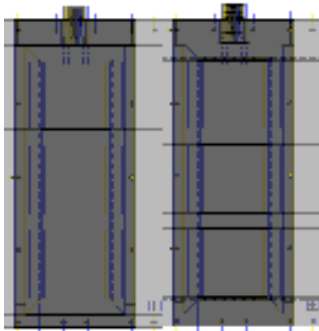
Penstock fig 108



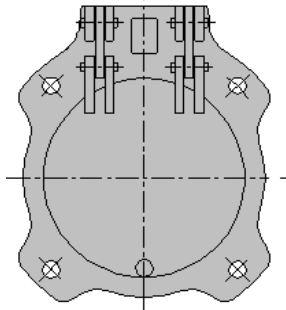
Floating Arms fig 934



Flap Valve SG 5100



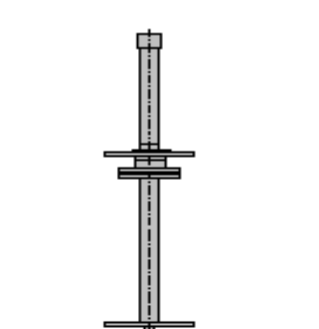
Flap Valve fig 812



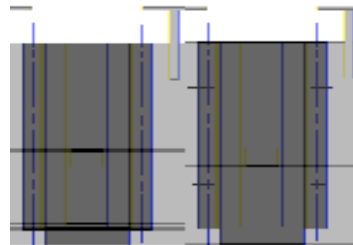
Sludge Valves



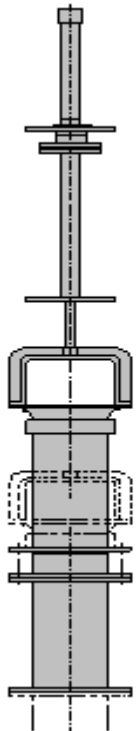
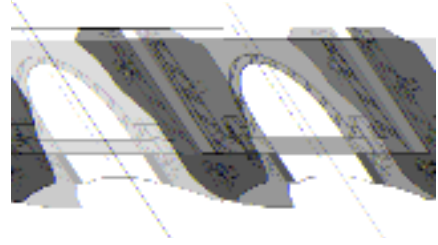
Hydrostatic Valve fig 674



Handstops fig 710.



Upward pressure relief valve



Stop logs fig SG 6100



Self contained decanting valve

