

**DOMOSTYL®**

*looks & durability*





#### INDEX

Discovering DOMOSTYL®	p. 2
Creating your difference	p. 4
Creating your desires	p. 18
DOMOSTYL® CUSTOMIZED	p. 20
■ Technical data	p. 24
DOMOSTYL®	p. 26
■ Technical data	p. 28
■ Range	p. 30
Installation	p. 42
The world of DOMOSTYL®	p. 44
Made by NMC	p. 46



# DISCOVERING DOMOSTYL®

Looks & durability

When it comes to construction, man has always been guided by the search for beauty and for long-lasting solutions. Whereas in the past, the perception was often that beauty meant splendour, regardless of any financial consideration, the economic demands of today's world often force us to opt for standardized solutions. Our creativity is also influenced by such imperatives as respect for the environment and the desire to save energy, and, therefore, improve the insulation of building.

That is why NMC offers you intelligent materials, which are both aesthetically pleasing and long-lasting, while preserving the environment. Ingenious products coupled with leading-edge technology have guaranteed our reputation for over half a century. Our basic skills relate to the development, production and distribution of technical foams. Many of these products, resulting from the most modern technologies, have earned a place in various areas of the construction sector, be it for decoration, protection or insulation. This is notably the case when it comes to embellish façades.

In order to satisfy your most diverse desires in the field of façade decor, we offer two product concepts. DOMOSTYL®, our standard concept based on polyurethane, is characterized by its low cost and great versatility. DOMOSTYL® CUSTOMIZED, on the other hand, is an ingenious concept offering reliable made-to-measure solutions for everyone who wants to give their home an even more personal mark. DOMOSTYL® and DOMOSTYL® CUSTOMIZED have been subjected to the most stringent tests by renown control bodies, recognised for the CE mark of approval and members of the European Organisation for Technical Approvals (EOTA). On the basis of these tests, NMC offers a 10-year warranty on all its products in the DOMOSTYL® and DOMOSTYL® CUSTOMIZED ranges.

NMC – It's all about aesthetics and quality

- over 50 years of experience in the production of synthetic foams
- over 15 years on the market with DOMOSTYL®
- permanent innovation
- attentive and high-quality service
- local competence
- products tested by the strictest independent institutes



# CREATING YOUR DIFFERENCE

Différent

Creative

Unique

Resistant

Easy

Responsible





## DIFFERENT

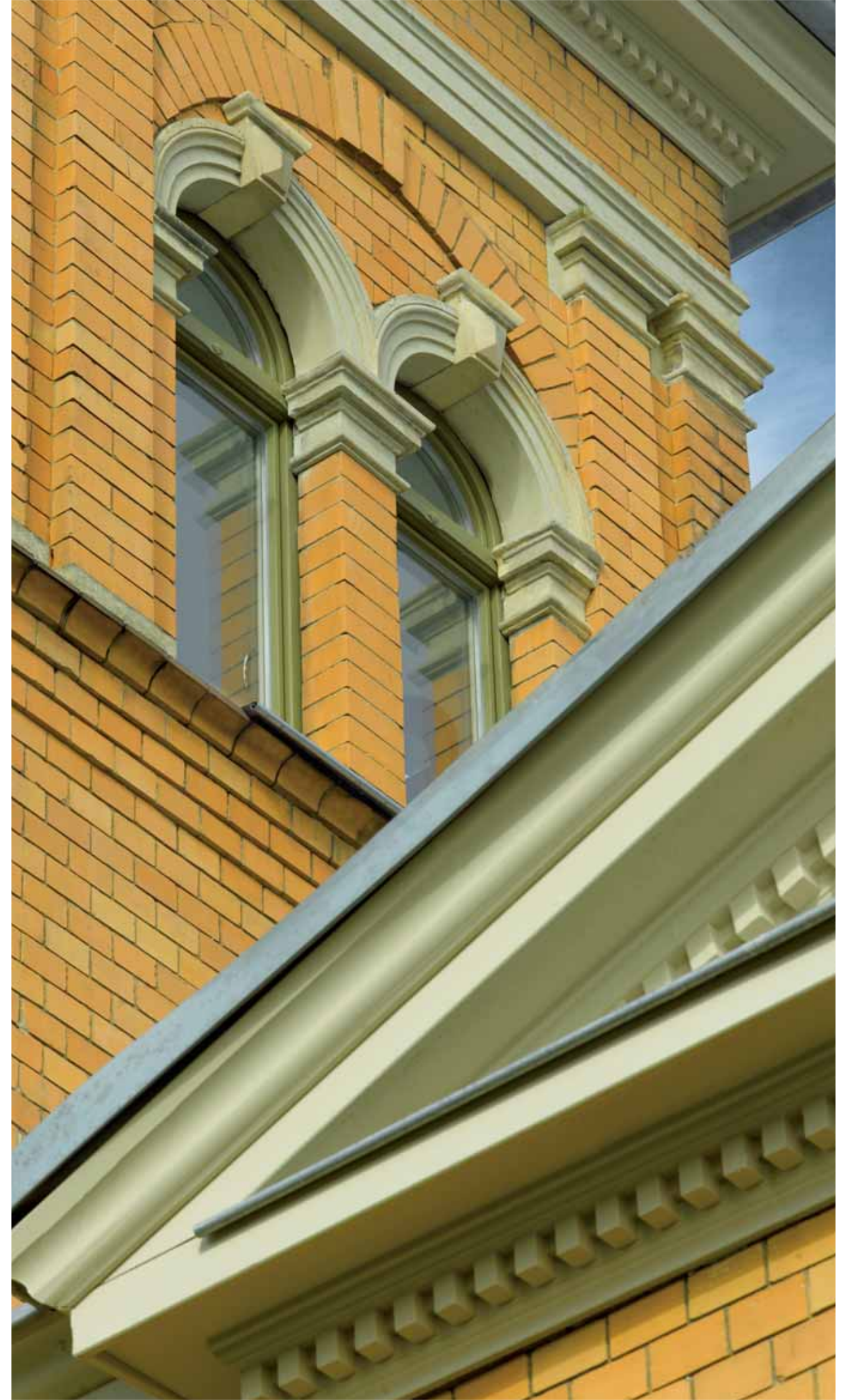
DOMOSTYL® and DOMOSTYL® CUSTOMIZED enable you to give your façades your own personal mark.





## CREATIVE

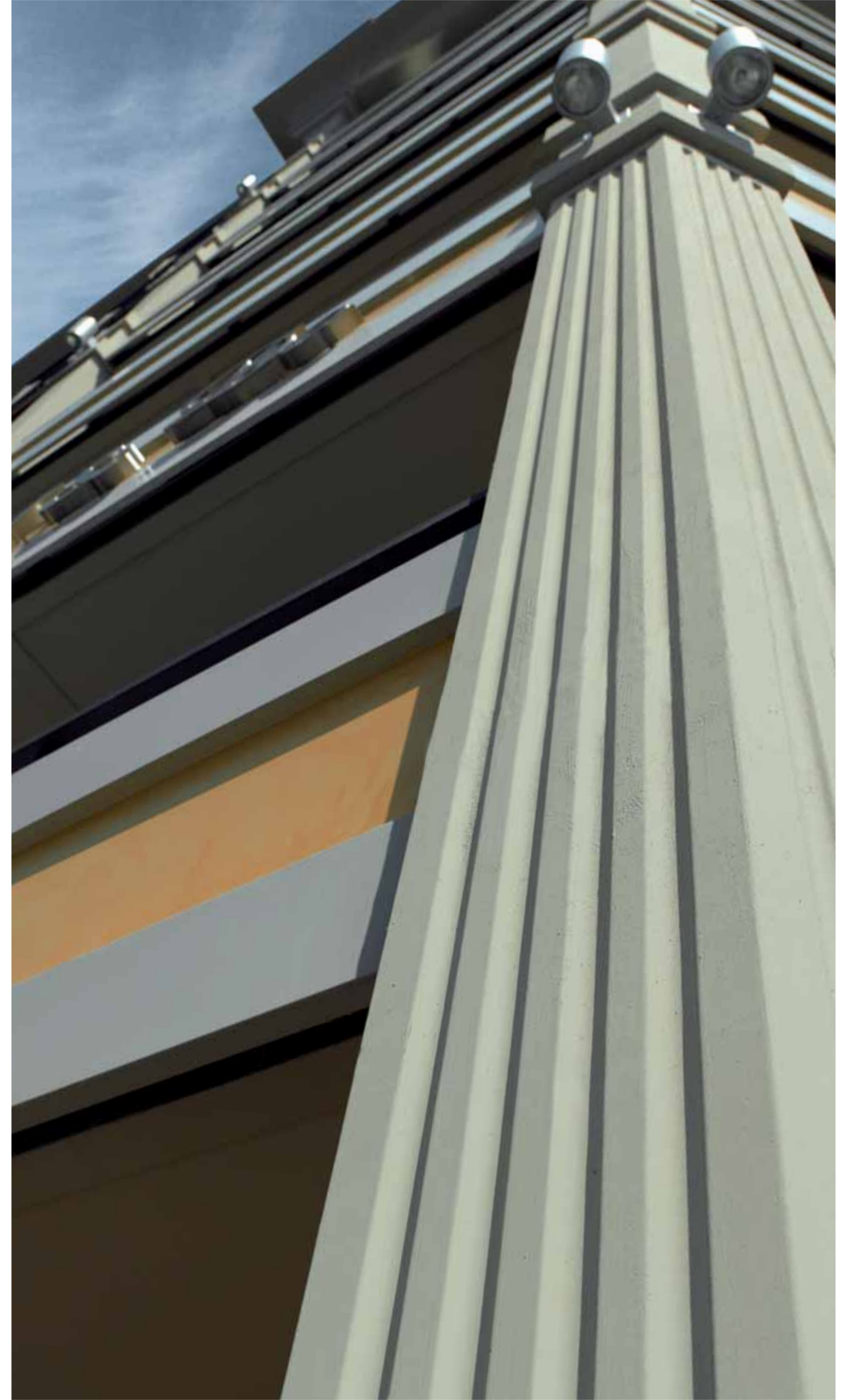
Give your buildings an extra dimension! DOMOSTYL® and DOMOSTYL® CUSTOMIZED give depth to your façades and free rein to your creativity.





## UNIQUE

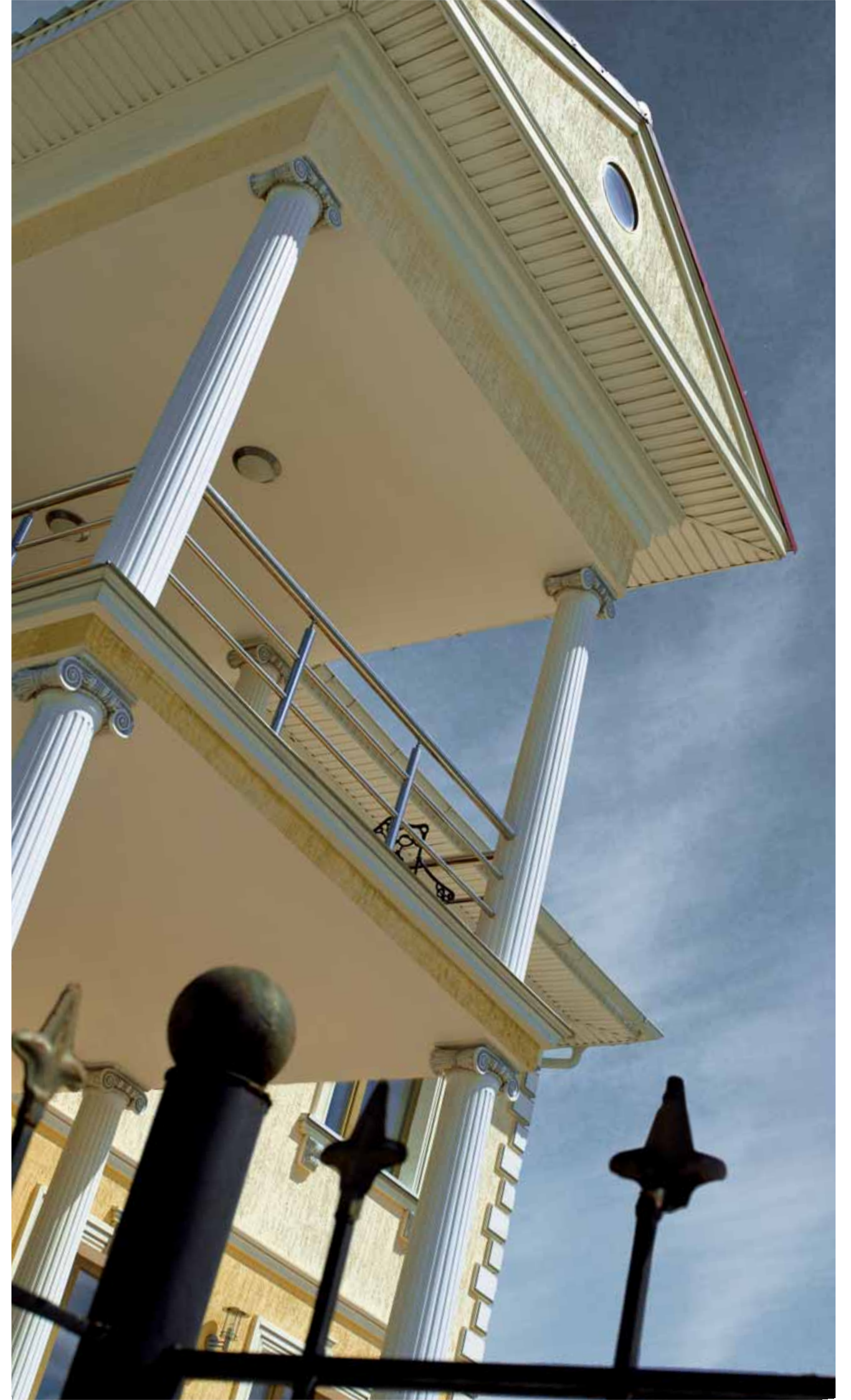
From floor to ceiling, DOMOSTYL® and DOMOSTYL® CUSTOMIZED will give your building unequalled good looks and improve curb appeal.





## RESISTANT

Thanks to the talents of our engineers, DOMOSTYL® and DOMOSTYL® CUSTOMIZED are resistant to the elements, and guarantee ever-lasting defect-free and weather-resistant products.





## EASY

The product is so light and so easy to cut that it guarantees you ease of installation. The adhesives dry quickly, meaning that rapid progress can be made at the project site.







## RESPONSIBLE

NMC helps protect the environment and strives to be a responsible player within the industry by carefully selecting the materials and employ strict manufacturing processes.





## CREATING YOUR DESIRES

Give your façade all the timeless elegance of a pediment. Dress your windows with a frame and a window sill. Use a string course to add structure to your surfaces...

DOMOSTYL® CUSTOMIZED and DOMOSTYL® offer you virtually unlimited possibilities. All our models are easy to install.

String course

Keystone

Toothing stone

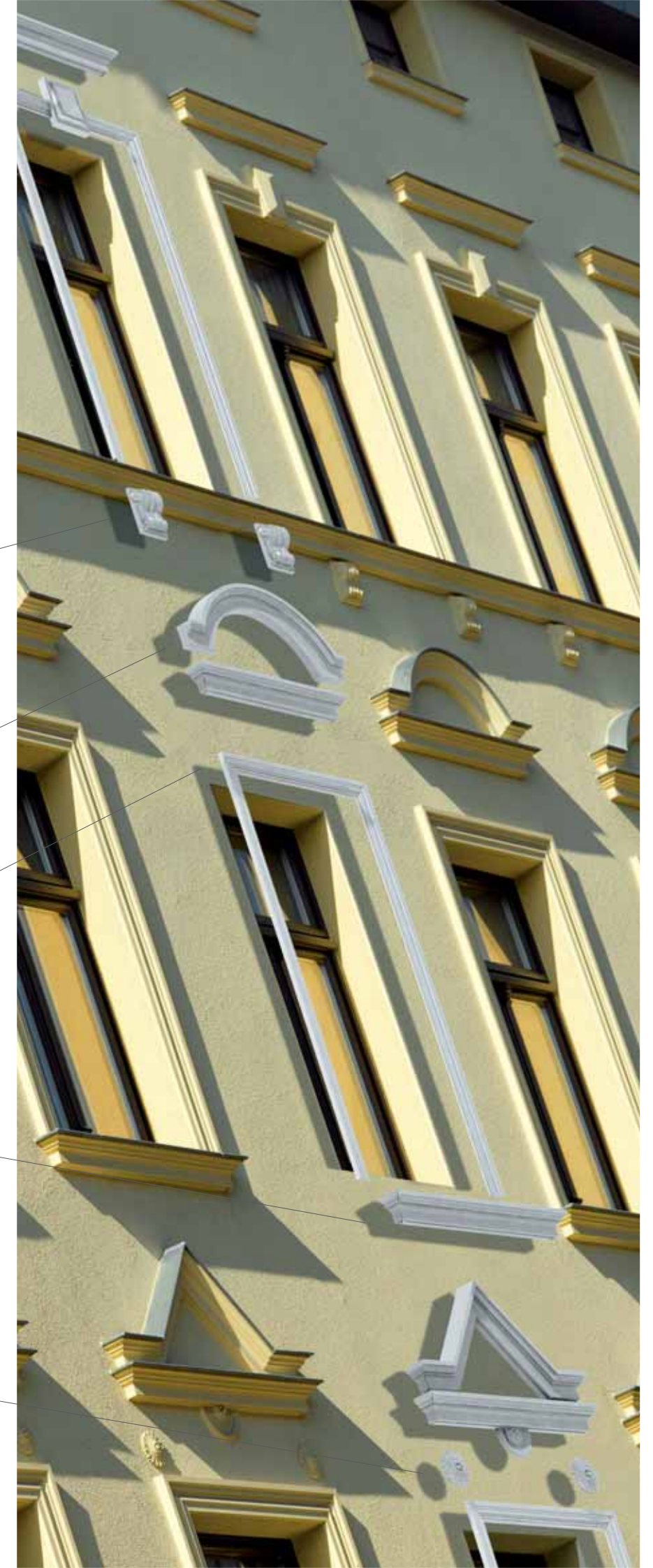
Consoles

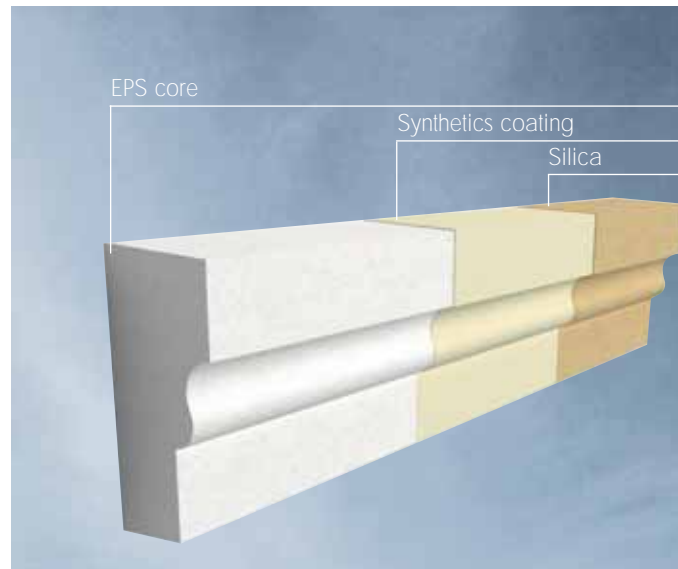
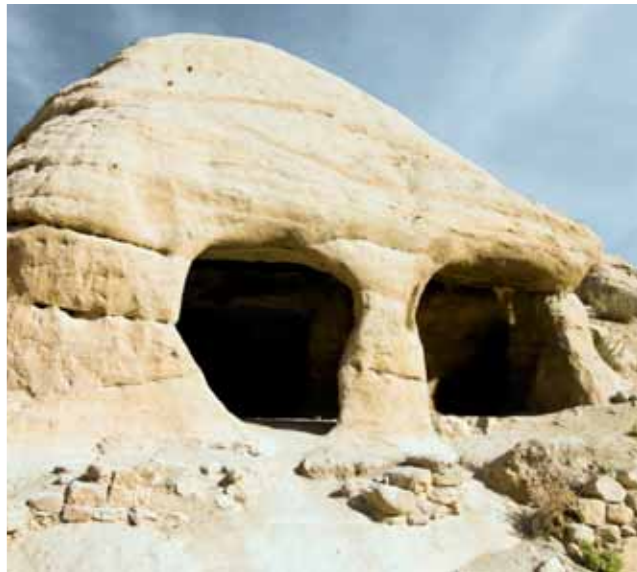
Headers

Door and window frames

Window-sills

Rosettes





# DOMOSTYL® CUSTOMIZED

Personalized & unique

Want to give your project that totally unique touch by using innovative materials?

DOMOSTYL® CUSTOMIZED gives you the ideal solution.

DOMOSTYL® CUSTOMIZED, specifically designed for the exterior decor of your building, is manufactured from surface reinforced polystyrene by means of a composite material and coated in a silica sand which is perfectly suited to this type of use.

Our technology allows us to produce a wide variety of shapes and styles for beautifying your façades.

- countless stylistic possibilities
- resistant
- lightweight
- easy to install
- 10-year guarantee



# DOMOSTYL<sup>®</sup> CUSTOMIZED

## Made-to-measure services

Whether your focus is on looks or technique, countless design possibilities are open to you.

Our technology gives you a unique and innovative solution, which combines flexibility in supply with impeccable quality. You design the products, we bring them to life.

### Designs of profiles

Design the product of your choice and send it to us in the form of a sketch showing all the required dimensions or a CAD file. Be sure to specify the gluing surfaces in your drawing so as to guarantee that the results will live up to your expectations.

We will send you a price quotation as promptly as we can.

### CAD modelling

Once you have accepted our quote, our technical staff will model the product in 2D. The CAD files will then be sent to you for your definitive acceptance and signature.

### Production and delivery

Once we receive the confirmation of your order, together with the signed drawings, we will incorporate your request into our production planning. We will quickly send you the confirmation of the exact deadline for the production, along with the date of shipping of the goods.

Naturally, NMC's staff will support you at every step throughout this whole process. One of the things that NMC offers is monitoring by its technical advisors. This service includes consulting ahead of the project, but on demand, it can also cover training for the installation of the products.

In addition, this separate installation guide is supplied automatically with the goods ordered.



# DOMOSTYL® CUSTOMIZED

## Technical data

### CONSTITUENT MATERIALS

- Expanded polystyrene with a highly resistant polyurethane coating
- Density of the expanded polystyrene: 24 kg/m<sup>3</sup> (12.5lbs/cu ft)
- Shore D: 60 (average)

### FACTORY FINISH

- Incrustation by high-pressure projection of grains of silica for a structured surface.

### DIMENSIONS

- Linear products  
Max. dimensions/section:  
2 m x 1,20 m x 0,50 m  
(6.56ft x 4ft x 1.64ft)  
The products can be longer than 2m (6.56ft), but will be manufactured in several sections.  
Minimum thickness: 10 mm (3/8")
- Circular products  
Max. external diameter:  
2,20 (7.22ft) in 2-D.  
Max. radius: 1,10 m (3.61ft)

### INSTALLATION TEMPERATURE

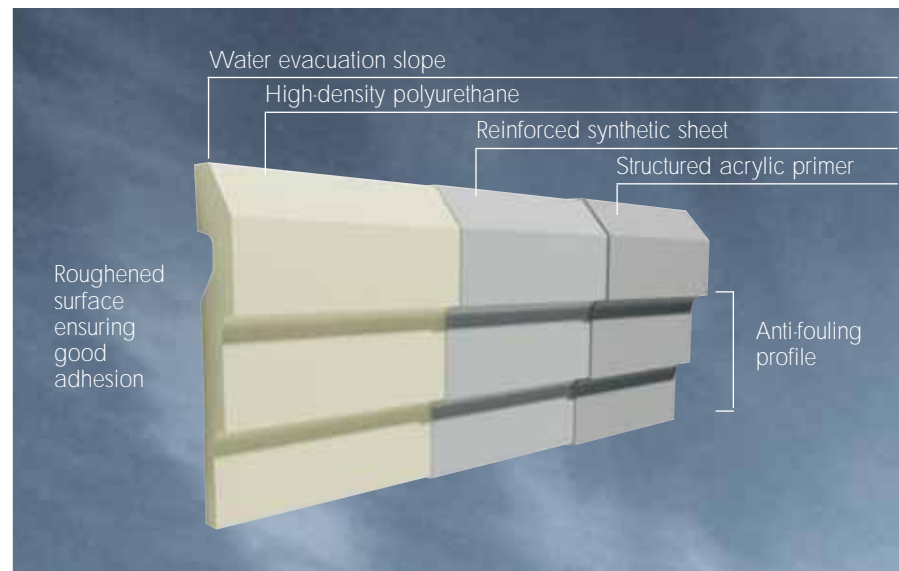
- Implementation temperatures:  
+5°C / +25°C  
41°F - 77°F
- For further information, consult the installation guide.
- Tested utilisation temperatures :  
-20°C / +70°C  
-4°F - 158°F

### DATA APPROVED BY THE CSTB, FRANCE

- Resistance under 100 kg (220lbs) load:  
delta E 0,18 mm (1/4")
- Shearing test:  
dry state : 0.15 MPa  
wet state : 0.07 MPa  
rupture between adhesive and concrete.
- Adherence of synthetic coating on EPS after ageing :  
0.28 MPa

### FIRE CLASSIFICATION

- B2 according to norm DIN 4102
- Euroclasse E according to norm EN ISO 13501-1



# DOMOSTYL®

Quick & versatile

Want to give your façades that personal touch, but looking for a quick, easy solution? Want a high-quality product with an optimum quality/price ratio, without having to go to the trouble of designing new shapes yourself? Then DOMOSTYL®, based on high-density polyurethane, is the answer you're looking for.

The DOMOSTYL® models enable you to finish off façades being renovated or constructed – quickly and easily. These products are sturdy and tough, and they will give style and character to every project, while at the same time combining speed and ease of installation.

Thanks to its consistent, rational range, DOMOSTYL® takes the headaches out of making up your mind, whether you are the project manager or the installer.

The range of DOMOSTYL® decorative elements for façades includes string courses, window sills, frames, ceiling roses, pediments, bosses, consoles, keystones, columns and half-columns.

A simulation CD-rom available on [www.nmc.eu](http://www.nmc.eu) helps you to add DOMOSTYL® products on to a scanned photo of your façade.

- style and character
- rapid and affordable
- sturdy and tough
- rapid delivery
- easy to work with
- good dimensional stability
- high-density polyurethane, reinforced with synthetic protection



# DOMOSTYL®

## Technical data

### CONSTITUENT MATERIALS

- High-density polyurethane foam
- Density: 200 kg/m<sup>3</sup> (12.5 lbs/cu ft)
- Shore D: 35 (average)

### FACTORY FINISH

- Surface finish: grey acrylic primer structured on synthetic sheet.
- The gluing surfaces are roughened to give better adhesion of the glue.

### DIMENSIONS

- Huge choice of products in stock: see page 30

### INSTALLATION TEMPERATURE

- Implementation temperatures: +5°C / +25°C (41°F - 77°F)  
For further information, consult the installation guide.
- Tested utilisation temperatures : -20°C / +70°C (-4°F - 158°F)

### DATA APPROVED BY THE CSTB, FRANCE

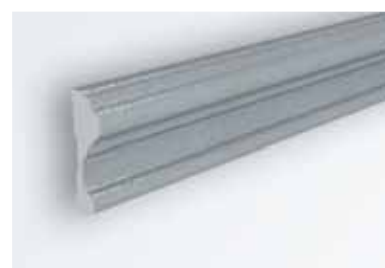
- Resistance under 100 kg (220lbs) load:
- Shearing test:  
dry state : 0.60 MPa  
wet state : 0.29 MPa  
rupture between adhesive and concrete.
- Adherence of synthetic coating on PU after ageing : 0,62 MPa

### FIRE CLASSIFICATION

- B2 according to norm DIN 4102
- Euroclasse E according to norm EN ISO 13501-1



# DOOR AND WINDOW FRAMES



2 3/4" X 3/4" 20 mm 70 mm NA



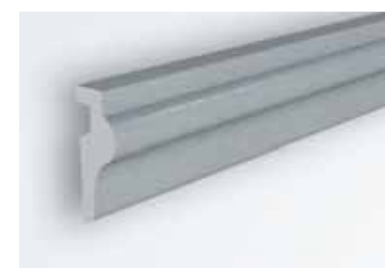
5 1/2" x 1 1/8" 30 mm 140 mm MA1



2 3/4" X 3/4" 20 mm 70 mm MA2



4 3/4" X 1 1/8" 30 mm 120 mm MA12



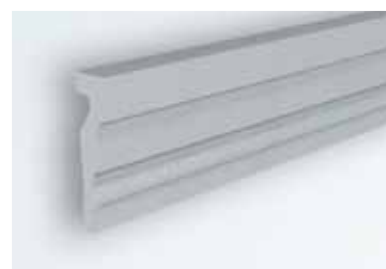
5 1/2" x 2" 50 mm 140 mm MA13



5 1/8" x 1 5/8" 40 mm 130 mm MA14



5 3/8" x 1" 25 mm 135 mm MA3



7 1/8" x 1 3/4" 45 mm 180 mm MA10



5 7/8" x 1 5/8" 40 mm 150 mm MA11



7 7/8" x 1 3/8" 35 mm 200 mm MA15



2 3/4" x 1 1/8" 30 mm 100 mm MA16

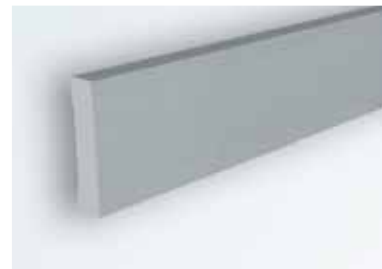




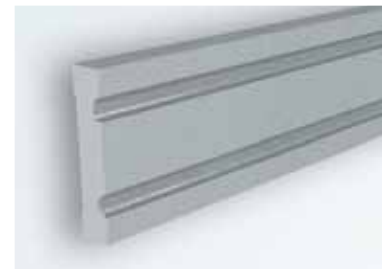
## STRINGER-COURSES



7 1/8" x 1 3/8" 35 mm  
180 mm **MA20**

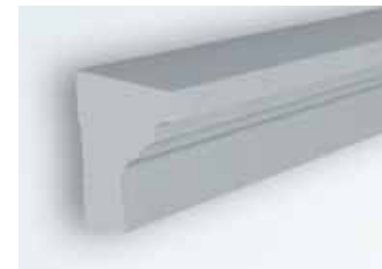


4 3/4" x 1" 25 mm  
120 mm **MA21**

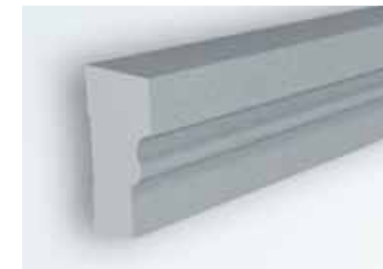


5 7/8" x 1 1/8" 30 mm  
150 mm **MA22**

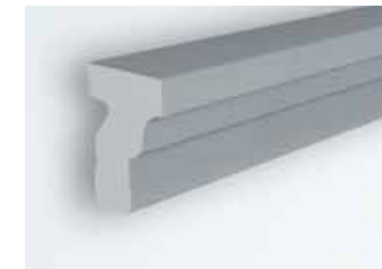
## WINDOW-SILLS



4 7/8" x 3 7/8" 100 mm  
125 mm **FA10**



5 1/2" x 2 3/4" 70 mm  
140 mm **FA11**



3 1/2" x 2 3/8" 60 mm  
90 mm **FA12**



5 1/2" x 2 3/8" 60 mm  
140 mm **FA13**



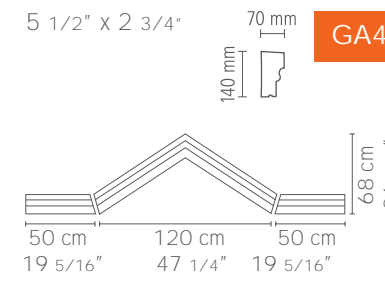
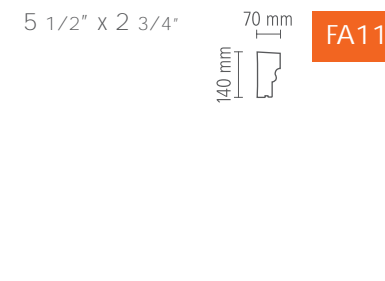
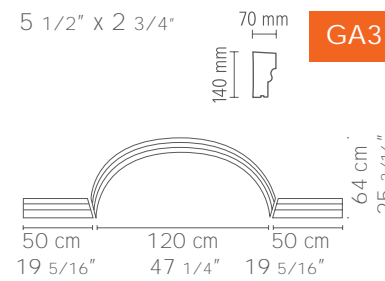
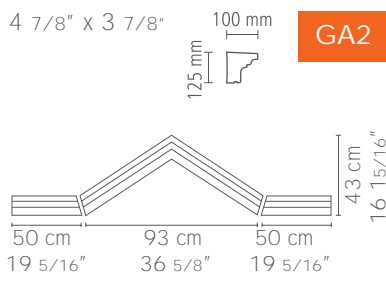
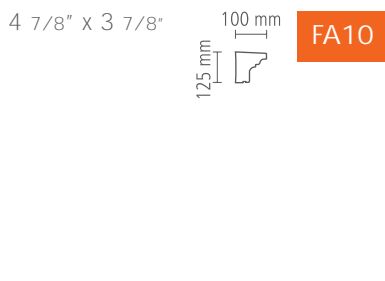
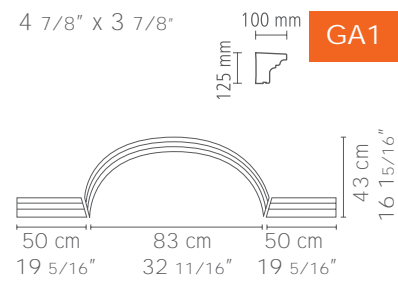
3 1/8" x 2 3/8" 60 mm  
80 mm **FA14**



3" x 2 1/2" 65 mm  
75 mm **FA15**



# FRONTONS

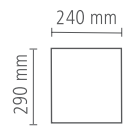




## KEYSTONES



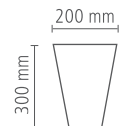
11 3/8" x 9 1/2"



SA1



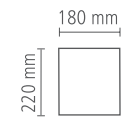
11 3/4" x 7 7/8"



SA2



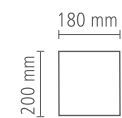
8 5/8" x 7"



CA10



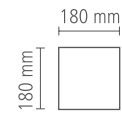
7 7/8" x 7"



CA11



7" x 7"

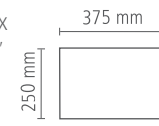


CA12

## TOOTHING STONES - ROSETTES



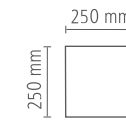
9 7/8" x 14 3/4"



BA10



9 7/8" x 9 7/8"



BA11



6 1/8"

Ø 155 mm

RA3



11 3/4"

Ø 300 mm

RA4



## COLUMNS - HALF COLUMNS

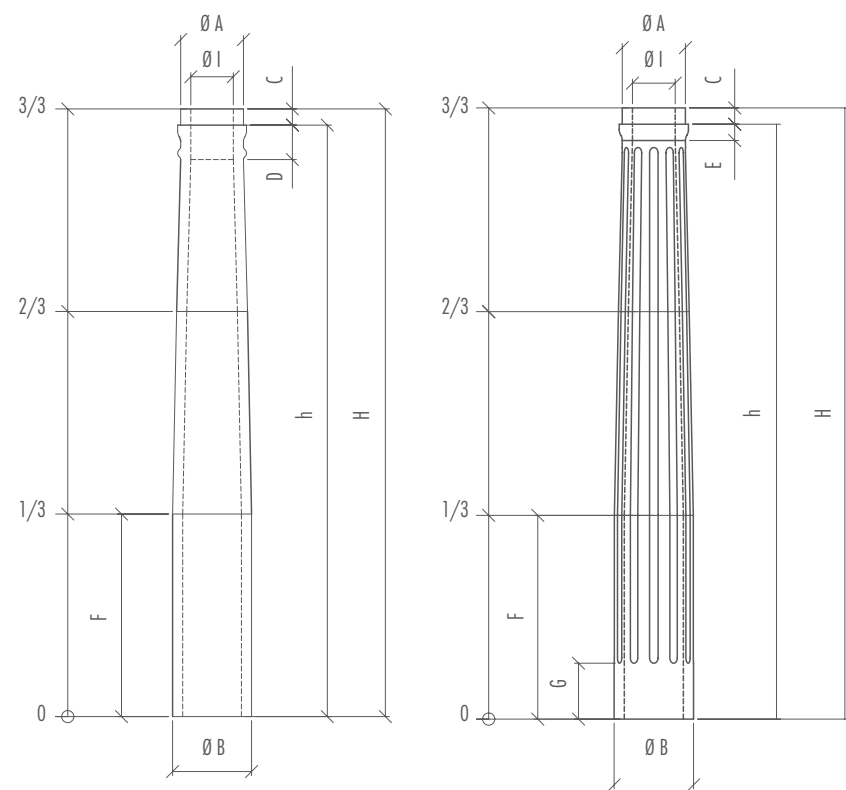
	Height	Ø 20 cm 7 7/8"			Ø 25 cm 9 7/8"			Ø 30 cm 11 13/16"					
		DSS1	DSS2	DSS3	DHSS1	DHSS2	DHSS3	DSM1	DSM2	DSM3	DHSM1	DHSM2	DHSM3
Columns smooth	250 cm 8' 2 3/8"												
	300 cm 9' 10 1/16"												
Columns fluted	250 cm 8' 2 3/8"												
	300 cm 9' 10 1/16"												
Caps Tuscan													
Caps Ionic													
Caps Scamozzi													
Base Tuscan													

## BASES - CAPS

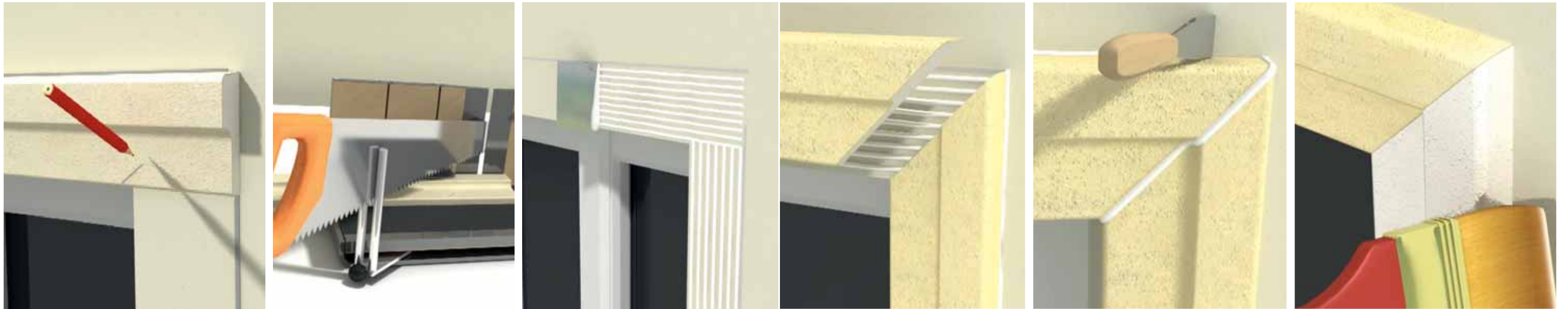
	Caps Tuscan			Caps Ionic			Caps Scamozzi			Bases Tuscan		
	DCT1	DCT2	DCT3	DCI1	DCI2	DCI3	DCS1	DCS2	DCS3	DBT1	DBT2	DBT3
Ø	20 cm 7 7/8"	25 cm 9 7/8"	30 cm 11 13/16"	20 cm 7 7/8"	25 cm 9 7/8"	30 cm 11 13/16"	20 cm 7 7/8"	25 cm 9 7/8"	30 cm 11 13/16"	20 cm 7 7/8"	25 cm 9 7/8"	30 cm 11 13/16"
ØA	16 cm 6 5/16"	20 cm 7 7/8"	24 cm 9 7/16"	16 cm 6 5/16"	20 cm 7 7/8"	24 cm 9 7/16"	16 cm 6 5/16"	20 cm 7 7/8"	24 cm 9 7/16"	-	-	-
ØB	-	-	-	-	-	-	-	-	-	20 cm 7 7/8"	25 cm 9 7/8"	30 cm 11 13/16"
Ab.	21 cm 8 1/4"	26 cm 10 1/4"	32 cm 12 10/16"	21 cm 8 1/4"	28,5 cm 11 3/16"	32 cm 12 10/16"	24,5 cm 9 5/8"	35,5 cm 14"	42 cm 16 1/2"	26,5 cm 10 7/16"	32 cm 12 10/16"	39 cm 15 3/8"
L	-	-	-	26 cm 10 1/4"	34 cm 13 3/8"	41,5 cm 16 5/16"	25 cm 9 7/8"	30 cm 11 13/16"	35 cm 13 3/4"	-	-	-
H	7 cm 2 3/4"	10 cm 3 15/16"	12 cm 4 3/4"	10 cm 3 15/16"	14 cm 5 1/2"	16 cm 6 5/16"	10 cm 3 15/16"	15 cm 5 7/8"	18 cm 7 1/16"	7,5 cm 2 15/16"	10 cm 3 15/16"	12,5 cm 4 15/16"
h	-	-	-	7,5 cm 2 15/16"	11 cm 4 5/6"	12,5 cm 4 15/16"	8,5 cm 3 3/8"	11 cm 4 5/6"	14 cm 5 1/2"	-	-	-



# COLUMNS



	DSS1	DFS1	DSS2	DFS2	DSS3	DFS3	DSM1	DFM1	DSM2	DFM2	DSM3	DFM3
Ø x H	20 x 250 cm 7 7/8" x 8' 2 3/8"		25 x 250 cm 9 7/8" x 8' 2 3/8"		30 x 250 cm 11 13/16" x 8' 2 3/8"		20 x 300 cm 7 7/8" x 9' 10 1/16"		25 x 300 cm 9 7/8" x 9' 10 1/16"		30 x 300 cm 11 13/16" x 9' 10 1/16"	
Ø A	15,5 cm 6 1/8"		19,5 cm 7 11/16"		23,5 cm 9 1/4"		15,5 cm 6 1/8"		19,5 cm 7 11/16"		23,5 cm 9 1/4"	
Ø B	19,5 cm 7 11/16"		24,5 cm 9 5/8"		29,5 cm 11 5/8"		19,5 cm 7 11/16"		24,5 cm 9 5/8"		29,5 cm 11 5/8"	
C	4 cm 1 9/16"		6 cm 2 3/8"		8 cm 3 1/8"		4 cm 1 9/16"		6 cm 2 3/8"		8 cm 3 1/8"	
D	8 cm 3 1/8"		9 cm 3 9/16"		11 cm 4 5/6"		8 cm 3 1/8"		9 cm 3 9/16"		11 cm 4 5/6"	
E	4 cm 1 9/16"		4,5 cm 1 3/4"		5 cm 1 15/16"		4,5 cm 1 3/4"		4,5 cm 1 3/4"		5 cm 1 15/16"	
F	85 cm 33 7/16"		85 cm 33 7/16"		85 cm 33 7/16"		100 cm 39 3/8"		100 cm 39 3/8"		100 cm 39 3/8"	
G	15 cm 5 7/8"		20 cm 7 7/8"		25 cm 9 7/8"		15 cm 5 7/8"		20 cm 7 7/8"		25 cm 9 7/8"	
H	250 cm 8' 2 3/8"		250 cm 8' 2 3/8"		250 cm 8' 2 3/8"		300 cm 9' 10 1/16"		300 cm 9' 10 1/16"		300 cm 9' 10 1/16"	
h	246 cm 96 13/16"		244 cm 96 1/16"		242 cm 95 1/4"		296 cm 1' 16 9/16"		294 cm 1' 15 9/16"		292 cm 1' 14 15/16"	
Ø I min	12 cm 4 3/4"		16 cm 6 5/16"		20 cm 7 7/8"		12 cm 4 3/4"		16 cm 6 5/16"		20 cm 7 7/8"	



# INSTALLATION

Simple & rapid

The weight of the DOMOSTYL® products constitutes an undeniable advantage, which makes them easier and quicker to install. Adhesion or mechanical fixing for the larger profiles is necessary, but takes no more than a few minutes and can be done by one person.

A detailed installation guide, together with a simplified installation video, can be obtained separately via our website, or simply on request.

Finally, to guarantee you a flawless result, training courses for installers are organised at regular intervals by our technical advisors, allowing you to familiarize yourself with the DOMOSTYL® products.

DOMOSTYL® and DOMOSTYL® CUSTOMIZED have been tested under the most stringent conditions by renowned control bodies, recognised for the CE mark of approval and members of the European Organisation for Technical Approvals (EOTA). On the basis of these tests, NMC offers a 10-year guarantee on all its products in the DOMOSTYL® and DOMOSTYL® CUSTOMIZED ranges.

For more details regarding the warranty, please refer to the installation guide.



# DOMOSTYL® WORLDWIDE

Presence & reality

ARGENTINA  
Pilar Golf Club, Pilar  
Universidad del Salvador,  
Buenos Aires  
Los Cipreses, San Isidro  
Edificio el Mirador, Martinez

AUSTRIA  
Hotel Liebetegger, Klagenfurt

BELGIUM  
Boutique Louis Vuitton, Brussels

BULGARIA  
Guesthouse Municipality, Sofia  
Hotel Renaissance, Sofia

BRAZIL  
Place des Vosges, Sao Paulo

CHILE  
Mormon Church, Chillan

CZECH REPUBLIC  
Hotel Posta, Franzbad  
Hotel Bajkal, Franzbad

FRANCE  
Evian Royal Resort, Evian

GERMANY  
Weimar Atrium, Weimar  
Kempinski, Heiligendamm  
Arkonaplatz, Berlin

ITALY  
Hotel Albergo Valadier, Roma  
Hotel Quisisana,  
Chiancano Terme

JAPAN  
Wedding Hotels

KAZAKHSTAN  
Diplomatic Estate, Astana

LEBANON  
Orphanage, Saida

POLAND  
Hotel Wilenski, Warsaw  
Shopping Centre, Malbork  
City-Hall, Biala Podlaska

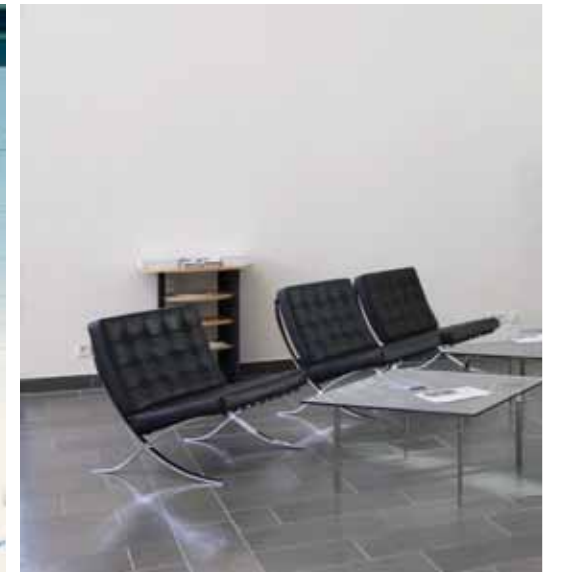
REUNION ISLAND  
Housing Estate

ROMANIA  
Hotel De Silva, Bucharest

RUSSIA  
KDC building, Kaliningrad

SPAIN  
Plaza de la Alegria, Madrid

UKRAINE  
Izmail Theatre, Odessa Region  
National Bank of Ukraine, Kiev



# MADE BY NMC

Spirit of innovation

When it comes to finding innovative foam solutions, NMC is the right choice. Polyethylene, foam rubber, polypropylene, polyurethane and polystyrene combined with our skills and years of experience deliver the basis for ingenious solutions to many problems.

A staff of over a thousand highly-qualified people guarantee exemplary quality at every level within the group, from advising our clients to handling their orders, and delivering the product to the after-sales service.

One of our guiding principles is to review core aspects such as top-flight technology, precision, the clients' wishes, performance and creativity. Our collaborators' reliability and skill are continually being monitored by targeted management, and constantly adjusted to meet future demands.

For this purpose, we have an ultra-modern management and research and development centre.

Made by NMC – High-technology products

- Innovative technology
- a global presence in more than 100 countries
- 17 subsidiaries





# NMC

Protection, aesthetics & leisure

We develop specifically integrated products for the high-tech industries. NMC's specific solutions are a daily feature across the manufacturing chains of various companies. They make a significant contribution to the smooth operation of the products being manufactured, or serve to protect them when they are being transported during or after the production.

Whether it be in the motor industry, in architecture or in the packaging sector, NMC provides reliable support for businesses and consumers alike.

NMC delivers looks and comfort – we transform synthetic materials into ingenious and artistic products, whether it be a decorative column for the garden, decorative mouldings in the living room, soundproofing under-layers or technical insulation for the pipework in a building.

NMC loves leisure – we are the masters of foam technology and we enjoy developing products for leisure uses such as gym mats, swimming rings, protective pads, gardening articles and a huge range of other products.



# RESPECT FOR THE ENVIRONMENT

Vision & practical application

We sent shock waves throughout the professional world 20 years ago, when NMC decided in 1988 to change its manufacturing processes by producing goods without any CFCs or even any HCFCs. At the time, our shareholders, the management and our engineers were already predicting the importance that climate change would begin to have when we approached the new millennium.

This means that today, we recycle and reuse almost 100% of the polymers offcuts and waste that results from the production processes. Thanks to precise technology and skilled staff, production waste is pared down to a bare minimum, which enables us to soak up overcapacities on the free market for recycling.

We constantly optimise our energy consumption in the manufacture of our products. In comparison with other insulating materials, such as mineral wool, which is still widely used in the insulation field and which involves a very energy-hungry manufacturing process, our products actually contribute towards saving natural resources.

Moving forward, we will even continue to respect the environment when developing new products, in the judicious use of logistical systems, but also in constantly challenging and reviewing firmly embedded processes and habits.

- production without CFCs
- production without HCFCs
- use of recycled materials

DWCDO03\_06/2008 © NMC sa, 2008 - Resp. Publ. - NMC sa - Gerf.Novi.Str. - B-4731 BEJnyelen

[www.nmc.eu](http://www.nmc.eu)

